



## 4.3 Inch 480x272 RGB TFT LCD Display Module with Capacitive Touch Panel

Our Product Introduction

### Basic Information

- Brand Name: Chenghao Optoelectronic
- Certification: RoHS CE、FCC
- Model Number: CH400WV22C-CTB
- Minimum Order Quantity: 100 Pcs
- Packaging Details: All The Products Are Packed In Right Way To Keep It Safe. For Small Sizes Of Products We Use Tray + Carton, For Bigger Sizes We Use Foam Slot + Carton. We Also Design Packages According To Customers' Requirements
- Delivery Time: 3~7 Days
- Payment Terms: TT
- Supply Ability: 300K Pcs/month



### Product Specification

- Highlight: 4.3 inch TFT LCD display module, 480x272 RGB capacitive touch panel, TFT LCD display with touch panel



### More Images



for more products please visit us on [chenghaolcd.com](http://chenghaolcd.com)

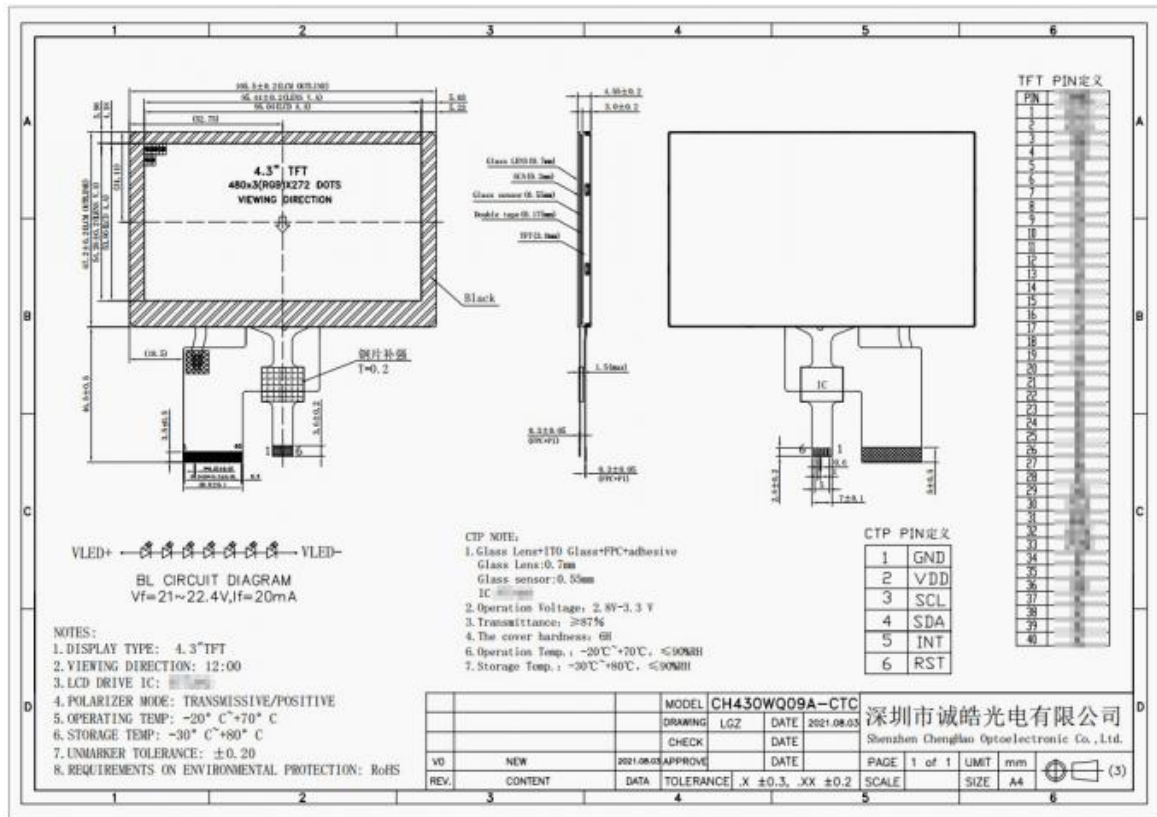
## Product Description

### Product Description

Need a display that handles both graphics and touch? The CH430WQ09A-CTC is a 4.3-inch TFT LCD module with 480x272 resolution. It's built for embedded systems, control panels, and HMI applications where space matters.

A capacitive touch panel sits right on top, driven by the FT5426 controller. So you get multi-touch response without extra assembly work. The \*\*\*\* driver IC handles the RGB interface, pushing consistent color and sharp images through an LED-backlit transmissive panel.

Temperature-wise, this module works from -20C to +70C without issues. That makes it a solid pick for industrial gear and semi-outdoor setups. And at just 5.23mm thick with a 39-pin FPC connector, it doesn't take up much room inside your enclosure.



### Features

#### 480x272 WQVGA Resolution

Sharp visual output with RGB stripe pixel arrangement. Works well for text, icons, and graphical interfaces in embedded applications.

#### Built-in Capacitive Touch Panel

Integrated CTP with FT5426 IC supports multi-touch. Cover glass has 6H hardness for scratch resistance, which helps with long-term durability.

#### 12 O'Clock Viewing Direction

Optimized from the top side. Fits instrument panels, wall-mounted displays, and vertical mounting setups.

#### 300 cd/m2 Brightness

Standard brightness with transmissive polarizer. Good readability in indoor and ambient-lit conditions.

#### Wide Operating Temperature

Works from -20C to +70C without issues. Suitable for industrial equipment and semi-outdoor use.

#### RGB Interface Connectivity

Standard RGB parallel interface with a 39-pin FPC. Connects easily to application processors and MCUs.

#### Compact Module Design

Thin profile at 5.23mm total thickness (including CTP). Fits into tight spaces inside the device enclosure.

#### RoHS Compliant

Made with environmentally friendly materials and processes. Fully RoHS compliant for global distribution

### Technical Parameters

Parameter	Specification
Module No	CH430WQ09A-CTC
Module Type	4.3" TFT LCD with CTP
Display Mode	Transmissive / Positive
Resolution	480(RGB) x 272 Dots
LCD Interface	RGB Interface
Brightness	300 cd/m2 (typ.)
Touch Type	CTP (Capacitive Touch Panel)

Touch IC	*****
Touch Interface	I2C
Viewing Direction	12 o'clock
Operating Temperature	-20C ~ +70C
Storage Temperature	-30C ~ +80C
Module Size	105.5 x 67.2 x 5.23 mm
Active Area Size	95.04 x 53.86 mm
Cover Lens VA Size	95.44 x 54.26 mm
FPC Pin Number	39 Pins
FPC Pitch	0.5 mm
Cover Hardness	6H
Driver IC	*****
Polarizer Mode	Transmissive / Positive
Environmental Protection	RoHS

## Modification and Customization

We're a display module manufacturer, which means we don't just sell off-the-shelf parts. The CH430WQ09A-CTC is our standard build, but we can change quite a bit on it.

Need different brightness levels? We can tune that. Want a custom FPC shape or a different interface type? Also doable. The capacitive touch sensitivity, cover glass coating (anti-glare or anti-fingerprint), and EMC performance can all be adjusted too.

If the standard module doesn't quite match your project, we'll start from your specs instead. Resolution, brightness, interface, touch setup, mechanical dimensions — all of it can be defined by what you actually need. Just tell us the requirements, and our engineers take it from there.

## FAQ

### Q: Can the brightness and FPC of the CH430WQ09A-CTC be customized?

A: Yes. We can tune the brightness (standard: 300 cd/m<sup>2</sup>), change the FPC shape and pin assignment, or adjust the interface based on your needs.

### Q: Is Chenghao an actual LCD manufacturer?

A: Yes. We run our own production facility and have been operating since 2015. We hold ISO 9001, ISO 14001, CE, RoHS, and other certifications.

### Q: What's the minimum order quantity?

A: MOQ is 100 pieces. Samples ship in 3-7 working days. Bulk orders follow the timeline we agree on with you.

### Q: Does it support multi-touch?

A: Yes. The \*\*\*\*\* controller handles multi-touch via standard I2C. Integration is straightforward with most embedded processors.

### Q: What's the typical lead time for bulk orders?

A: Depends on quantity and current production. Our monthly capacity supports timely delivery for most volumes. Contact our sales team for a timeline based on your order.



Shenzhen ChengHao Optoelectronic Co., Ltd.



+86 755-27806536



add@chenghaolcm.com



chenghaolcd.com

7th floor, building C5, Hengfeng Industrial City, Hangcheng street, Bao'an District, Shenzhen