

4" Electronic Lcd Display 25 Pins MIPI Interface 800x480 Color Tft Module

Our Product Introduction

for more products please visit us on chenghaolcd.com

Basic Information

- Brand Name: Chenghao Optoelectronic
- Certification: RoHS CE、FCC
- Model Number: CH400WV22C-CTB
- Minimum Order Quantity: 100 Pcs
- Packaging Details: All The Products Are Packed In Right Way To Keep It Safe. For Small Sizes Of Products We Use Tray + Carton, For Bigger Sizes We Use Foam Slot + Carton. We Also Design Packages According To Customers' Requirements
- Delivery Time: 3~7 Days
- Payment Terms: TT
- Supply Ability: 300K Pcs/month



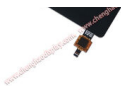
Product Specification

- Module Size: 61*102*3.65 Mm
- Screen Size: 3.97 Inch
- Lcd Interface: MIPI
- Touch Type: Capacitive Touch
- Operating Temperature: -20 ~ +70
- Viewing Area Size: 52.44*87 Mm
- Module Type: 3.97" TFT
- Viewing Direction: 85/85/85/85



More Images





Product Description

Product Description:

The CH400WV22C-CTB is a cutting-edge 3.97-inch TFT LCD module developed by Shenzhen Chenghao Optoelectronic Co., Ltd. This module utilizes IPS (In-Plane Switching) technology, ensuring vibrant color reproduction and wide viewing angles of 85 degrees in all directions. With a resolution of 480x800 pixels, the display guarantees sharp and clear visuals, essential for various applications requiring high-quality imagery. Designed for versatility, this module operates effectively within a temperature range of -20°C to +70°C, making it suitable for environments with varying conditions. Its storage temperature capabilities extend to -30°C to +80°C, ensuring reliability even in extreme conditions. The display is equipped with a transmissive and negative polarizer mode, further enhancing its visibility under different lighting scenarios.



Moreover, the CH400WV22C-CTB supports a MIPI DSI (Display Serial Interface) for seamless communication with external devices, streamlining integration into various systems. The operational voltage range of 2.8V to 3.3V allows for efficient power consumption, contributing to energy savings in prolonged use.

Environmental sustainability is also a priority, as the module adheres to RoHS standards, ensuring compliance with modern environmental protection requirements. The overall design, complemented by a robust structure and customizable options, positions the CH400WV22C-CTB as an ideal choice for industries seeking high-performance display solutions.

Features:

Compact Dimensions

The CH400WV22C-CTB module features a compact size of 61mm x 102mm x 3.65mm. This slim profile allows for easy integration into various applications where space is limited.

MIPI LCD Interface

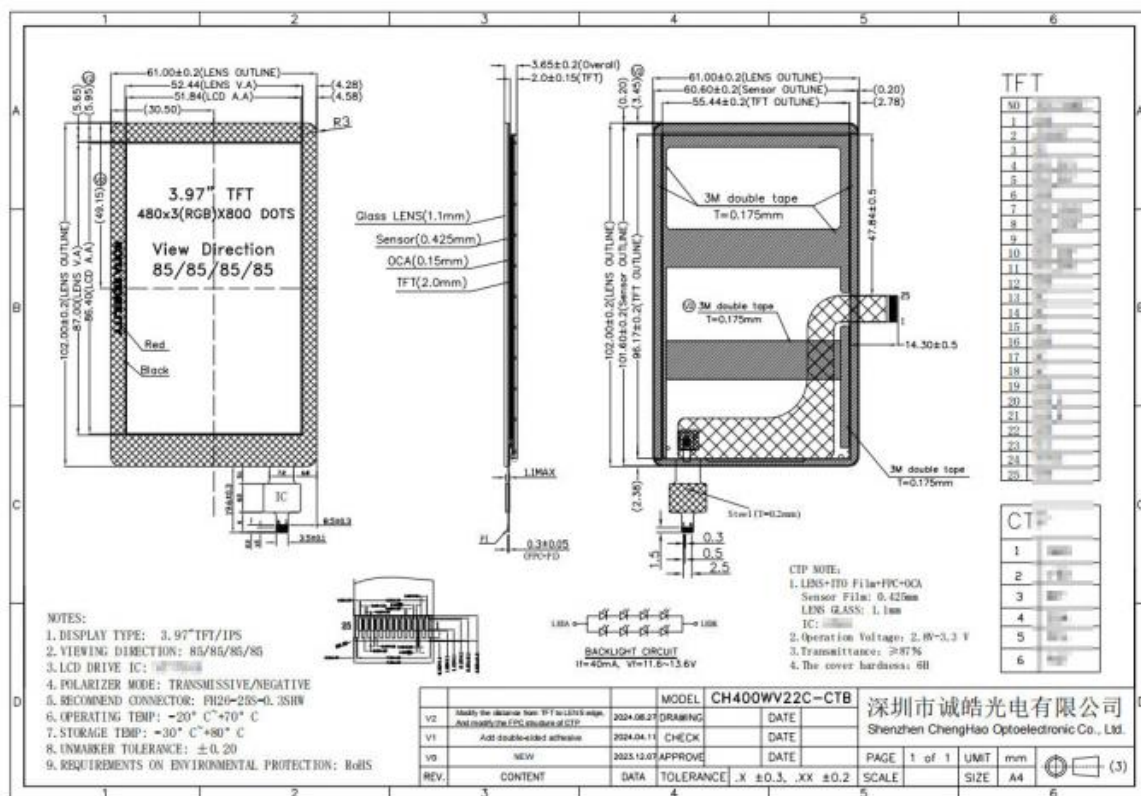
Equipped with a MIPI (Mobile Industry Processor Interface), the CH400WV22C-CTB enables high-speed communication between the display and external processing units.

Wide Operating Temperature Range

The module is designed to function effectively within a broad temperature range of -20°C to +70°C. This feature makes it suitable for diverse environmental conditions, ensuring reliable performance even when faced with significant temperature fluctuations.

Wide Viewing Angles

With a viewing angle of 85 degrees in all directions, the CH400WV22C-CTB provides excellent visibility from multiple perspectives. This feature is crucial for applications where users may need to view the display from various angles without compromising color accuracy or clarity.



Technical Parameters:

Viewing Direction	85/85/85/85
Display Mode	IPS / Transmissive / Normally Black
Storage Temperature	-30 ~ +80
Contrast	800
Active Area Size	51.84 x 86.4 mm
Viewing Area Size	52.44 x 87 mm
Operating Temperature	-20 ~ +70
FPC Pin Numbers	25
Resolution	480 x 800 Dots
LCD Interface	MIPI

Customization:

The CH400WV22C-CTB module offers a diverse range of customization options tailored to meet specific application requirements. Recognizing that different industries have unique demands, Chenghao Optoelectronic provides numerous avenues for clients to personalize various features of the module, ensuring optimal performance.

Flexible FPC Design

Clients can customize the Flexible Printed Circuit (FPC) design to fit their unique specifications. This includes options for altering the shape, pin configuration, and structure of the FPC. Such customization is essential for seamless integration into different systems, allowing users to achieve the necessary connectivity while maintaining efficient manufacturing and assembly processes.

Interface Customization

The CH400WV22C-CTB supports multiple LCD interface types, including MIPI, SPI, and more. Clients can select from these options based on the requirements of their application, enabling compatibility with various driving devices. This flexibility helps enhance the module's adaptability to specific use cases, ensuring robust connections and efficient signal processing.

Backlight Brightness Adjustments

This module allows for customization of the backlight brightness levels, which can range from 300 cd/m² to 1500 cd/m² depending on the model. Clients can specify their preferred brightness to optimize visibility in various lighting environments. This feature ensures that the display remains clear and functional, whether in dim or brightly lit settings.

Operating Temperature Range Support

Besides the standard operating temperature range of -20°C to +70°C, customization options are available to modify this range. Users can

request a wider temperature tolerance, accommodating up to -45°C to +90°C. This adjustment is particularly beneficial for applications exposed to extreme environmental conditions, ensuring the module functions reliably under various temperatures.

Cover Glass Customization

The glass cover of the CH400WV22C-CTB can also be personalized. Clients can choose specific characteristics such as thickness, shape, and even surface treatments like anti-glare or anti-reflective coatings. This customization enhances both the functionality and aesthetic appeal, allowing the display to meet specific industrial design requirements.

In conclusion, the CH400WV22C-CTB's extensive customization capabilities provide clients with the tools necessary to create tailored solutions for a wide array of applications. From FPC design to operating temperature adjustments, each customization option ensures that the module can effectively address the diverse needs of its users.

FAQ:

Q1: What certifications does the CH400WV22C-CTB Small LCD Touch Screen have?

A1: The CH400WV22C-CTB Small LCD Touch Screen from Chenghao Optoelectronic is certified with RoHS, CE, and FCC, ensuring compliance with international safety and environmental standards.

Q2: What is the minimum order quantity for this product?

A2: The minimum order quantity for the CH400WV22C-CTB Small LCD Touch Screen is 100 pieces.

Q3: How is the product packaged for shipping?

A3: All products are packed securely to ensure safety during transit. For small sizes, we use tray plus carton packaging, while bigger sizes are packed with foam slots plus carton. Packaging can also be customized according to customers' requirements.

Q4: What is the typical delivery time for orders of the CH400WV22C-CTB model?

A4: The delivery time is typically between 3 to 7 days after order confirmation.

Q5: What payment terms do you accept for purchasing this product?

A5: We accept TT (Telegraphic Transfer) as the payment method for orders of the CH400WV22C-CTB Small LCD Touch Screen.



Shenzhen ChengHao Optoelectronic Co., Ltd.



+86 755-27806536



add@chenghaolcm.com



chenghaolcd.com

7th floor, building C5, Hengfeng Industrial City, Hangcheng street, Bao'an District, Shenzhen