



4 Inch Embedded Touch Display 480*800 IPS Lcd Industrial Tft

Our Product Introduction

for more products please visit us on chenghaolcd.com

Basic Information

- Brand Name: Chenghao Optoelectronic
- Certification: RoHS CE、FCC
- Model Number: CH400WV22C-CTB
- Minimum Order Quantity: 100 Pcs
- Packaging Details: All The Products Are Packed In Right Way To Keep It Safe. For Small Sizes Of Products We Use Tray + Carton, For Bigger Sizes We Use Foam Slot + Carton. We Also Design Packages According To Customers' Requirements
- Delivery Time: 3~7 Days
- Payment Terms: TT
- Supply Ability: 300K Pcs/month



Product Specification

- Display Mode: IPS/Transmissive/Normally Black
- Module Size: 61*102*3.65 Mm
- Color: 16M
- Screen Size: 3.97 Inch
- Viewing Area Size: 52.44*87 Mm
- Lcd Interface: MIPI
- Contrast: 800
- Module Type: 3.97" TFT



More Images



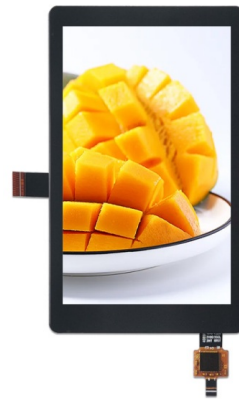


Product Description

Product Description:

The CH400WV22C-CTB is a high-performance 3.97-inch IPS TFT LCD module crafted by Chenghao Optoelectronic. Boasting a resolution of 480*800 dots, it delivers sharp and detailed visuals with 16 million colors, ensuring vivid and true-to-life image reproduction. The IPS display technology offers an impressive 85/85/85/85 viewing angle from all directions, eliminating color distortion and providing consistent visibility.

With a contrast ratio of 800 and a brightness of 600 cd/m², this module performs exceptionally well even in bright environments. It features a MIPI interface and a 25-pin FPC, enabling stable and efficient data transmission. The capacitive touch function comes as standard, with options to switch to resistive touch or no touch based on specific requirements.



Designed for durability, the module operates within a temperature range of -20~+70 and can be stored at -30~+80 , making it suitable for various industrial and outdoor applications. Measuring 61 1023.65 mm, it has a compact form factor that fits seamlessly into space-constrained designs.



Chenghao Optoelectronic provides extensive customization services, including FPC shape and pin number adjustments, interface modifications (SPI, MCU, RGB, etc.), brightness tuning (300-1500 cd/m²), operating temperature adaptation (-45~+90), glass cover customization, anti-glare treatment, and anti-electromagnetic interference solutions, catering to diverse project needs.

Features:

(1)Exceptional Full-View Performance: Built with IPS display technology, the CH400WV22C-CTB offers a uniform viewing angle of 85/85/85/85 across all four orientations. Unlike traditional display modules that suffer from color fading or contrast loss when viewed off-center, this module maintains vivid color accuracy and sharp image details from any perspective. It effectively meets the demand for clear visibility in scenarios where the observation direction is variable or multi-angle viewing is required.

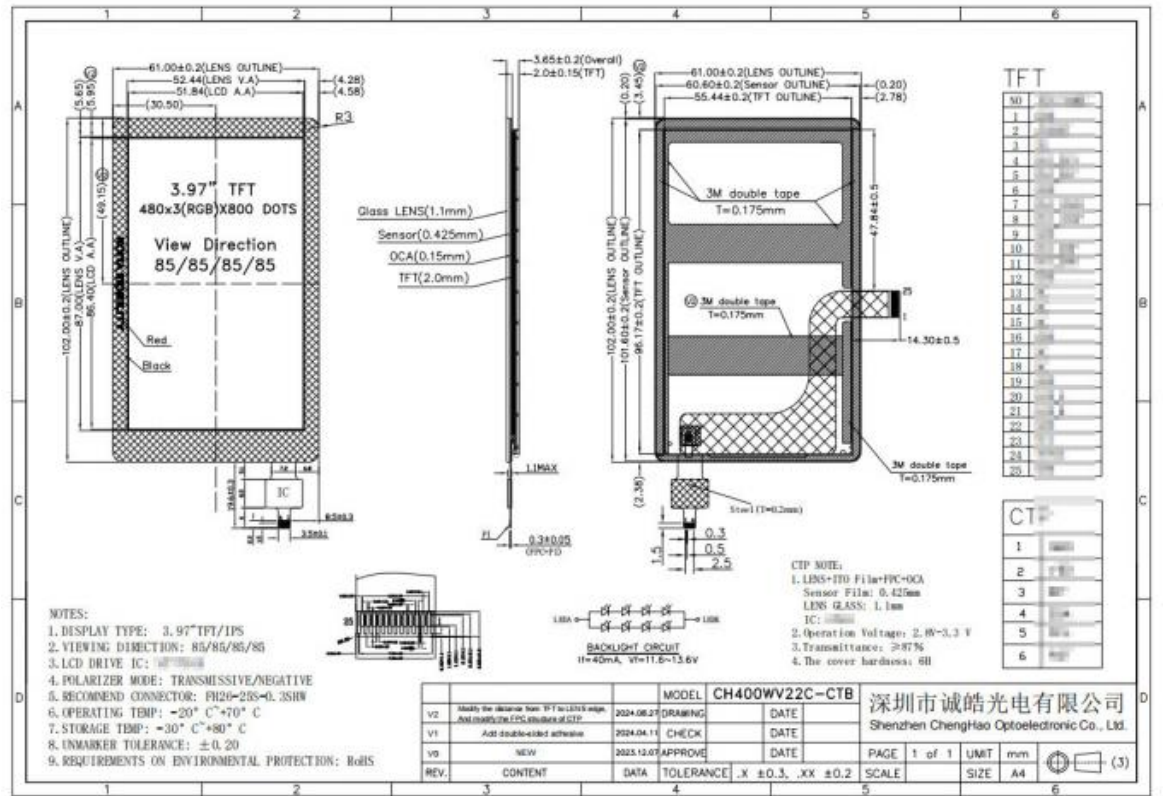
(2)Reliable Wide-Temperature Operation: This module is designed to withstand extreme temperature conditions, featuring an operating temperature range of -20°C to +70°C and a storage temperature range of -30°C to +80°C. Its robust thermal stability ensures consistent performance without functional degradation, whether deployed in cold outdoor

environments or high-temperature industrial settings. This wide-temperature adaptability enhances its versatility and reliability in diverse application scenarios.

(3)Stable MIPI Interface Configuration: Equipped with a MIPI interface and a 25-pin FPC, the CH400WV22C-CTB enables efficient and stable data transmission. The MIPI interface, a widely recognized standard in display technology, ensures low signal interference and high communication efficiency, facilitating seamless integration with various control units. The 25-pin FPC design optimizes connection reliability and mechanical flexibility, simplifying the assembly process and improving the module's adaptability to different installation requirements.

Technical Parameters:

Screen Size	3.97 Inch
Active Area Size	51.84 x 86.4 mm
FPC Pin Numbers	25
LCD Interface	MIPI
Display Mode	IPS / Transmissive / Normally Black
Storage Temperature	-30 ~ +80
Screen Brightness	600 Cd/m²
Module Size	61 x 102 x 3.65 mm
Operating Temperature	-20 ~ +70
Resolution	480 x 800 Dots



Support and Services:

Shenzhen ChengHao Optoelectronic Co., Ltd. provides comprehensive and professional support and services for the CH400WV22C-CTB 3.97-inch IPS TFT LCD module to meet customers' diverse project requirements.

Firstly, we offer tailored technical consultation services. Our professional team is available to answer questions about product parameters such as FPC structure modification, operating voltage adjustment (2.8V-3.3V), and cover glass customization (including thickness, hardness of 6H, and shape). We also provide technical guidance on module integration to ensure smooth application in specific scenarios.

Secondly, we adhere to strict quality assurance and compliance support. All CH400WV22C-CTB modules comply with

RoHS environmental protection standards. Each batch undergoes rigorous testing, covering key performance indicators like transmittance ($\geq 87\%$), wide-temperature adaptability ($-20^{\circ}\text{C}\sim+70^{\circ}\text{C}$ operating temperature, $-30^{\circ}\text{C}\sim+80^{\circ}\text{C}$ storage temperature), and touch function stability, ensuring reliable product quality.

Additionally, we provide flexible sample and mass production support. Customers can apply for sample testing to verify product compatibility before mass procurement. During the mass production phase, we guarantee stable supply capacity and timely communication, promptly addressing any issues arising from production and delivery to ensure the smooth progress of customers' projects.

We are committed to providing efficient and thoughtful services, accompanying customers throughout the entire product application cycle.

FAQ:

Q1: What is the brand and model number of this small LCD touch screen?

A1: The small LCD touch screen is from Chenghao Optoelectronic, and the model number is CH400WV22C-CTB.

Q2: Does this product have any certifications?

A2: Yes, the CH400WV22C-CTB model is certified with RoHS, CE, and FCC certifications.

Q3: What is the minimum order quantity for this LCD touch screen?

A3: The minimum order quantity for the CH400WV22C-CTB is 100 pieces.

Q4: How are the products packaged for shipping?

A4: All products are packed securely to ensure safety. Small-sized products use tray plus carton packaging, while bigger sizes use foam slot plus carton. Packaging can also be customized according to customer requirements.

Q5: What is the typical delivery time and payment terms?

A5: The delivery time is typically between 3 to 7 days. The accepted payment term is TT (Telegraphic Transfer).

Q6: What is the monthly supply ability of this product?

A6: Chenghao Optoelectronic can supply up to 300,000 pieces of the CH400WV22C-CTB small LCD touch screen per month.



Shenzhen ChengHao Optoelectronic Co., Ltd.



+86 755-27806536



add@chenghaolcm.com



chenghaolcd.com

7th floor, building C5, Hengfeng Industrial City, Hangcheng street, Bao'an District, Shenzhen