

15.6 Inch Screen Wide-temp 1920*1080 Full HD Color Tft Lcd For Industrial Applications

Our Product Introduction

for more products please visit us on chenghaolcd.com

Basic Information

- Brand Name: Chenghao Optoelectronic
- Certification: CE, ISO9001, Rose, SGS
- Model Number: CH156FH02A
- Minimum Order Quantity: 100 Pcs
- Packaging Details: All The Products Are Packed In Right Way To Keep It Safe. For Small Sizes Of Products We Use Tray + Carton, For Bigger Sizes We Use Foam Slot + Carton. We Also Design Packages According To Customers' Requirements
- Delivery Time: 3~7 Days
- Payment Terms: T/T, AliPay, PayPal
- Supply Ability: 50000000 Pcs/month

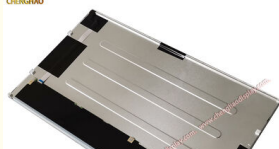


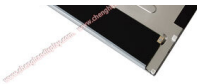
Product Specification

- Operating Temperature: -20 ~ +70
- Viewing Direction: 12:00
- Storage Temperature: -30 ~ +80
- Active Area Size: 344*193 Mm
- Screen Brightness: 300 Cd/m2
- Module Type: 15.6" TFT
- Module Size: 370*217*9.3 Mm
- Resolution: 1920*1080 Dots
- Highlight: 15.6 inch industrial TFT LCD display, wide-temperature full HD LCD screen, 1920x1080 TFT LCD for industrial use



More Images





Product Description

Product Description:

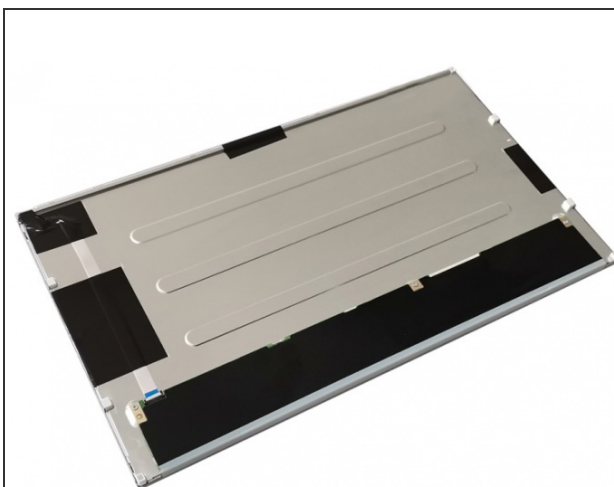
The CH156FH02A is a high-performance 15.6-inch TFT LCD module developed by Chenghao Optoelectronics. It boasts a 1920×1080 Full HD resolution, delivering clear and vibrant images. Employing TN transmissive constant white mode technology, it offers rapid response and stable display. Its effective display area is 344×193 mm, with a standard brightness of 300 cd/m² and a contrast ratio of 500:1, making it suitable for typical indoor lighting environments. The module transmits signals via an LVDS interface, operates within a temperature range of -20 to +70 , and can be stored at temperatures from -30 to +80 . While the original version lacks touch functionality, it supports the addition of capacitive or resistive touchscreens. Furthermore, the manufacturer offers various customization options, including interface type, brightness, operating temperature, anti-glare, electromagnetic shielding, and cover glass, allowing for flexible adaptation to various industrial and commercial applications.



Features:

Compact and Robust Form Factor

The CH156FH02A module measures 370 mm (W) × 217 mm (H) × 9.3 mm (D), achieving efficient integration within limited space while maintaining good structural stability. Its slim design and standardized form factor facilitate installation in control panels, instrument housings, and embedded systems, ensuring mechanical compatibility.



High-Definition LVDS Interface Ensures Stable Signal Transmission

The module utilizes an LVDS (Low Voltage Differential Signaling) interface, enabling high-speed, interference-resistant data transmission over long cable distances. This interface effectively reduces electromagnetic interference, maintains signal integrity, and is particularly suitable for industrial or outdoor scenarios with high electrical noise, ensuring stable and reliable display.

Wide Operating Temperature Range Adapts to Harsh Environments

With an operating temperature range of -20°C to +70°C, this module can be deployed in locations without temperature control, such as vehicle cabins, outdoor kiosks, or factory workshops. Combined with a storage temperature tolerance of -30°C to +80°C, the module exhibits excellent thermal stability, capable of withstanding significant fluctuations in ambient temperature.

Technical Parameters:

Module Type	15.6" TFT
Storage Temperature	-30 ~ +80
Display Mode	TN/Transmissive/Normally White
Screen Brightness	300 Cd/m ²
Operating Temperature	-20 ~ +70
Module Size	370*217*9.3 mm
Resolution	1920*1080 Dots
LCD Interface	LVDS
Active Area Size	344*193 mm
Viewing Direction	12:00

Customization:

The CH156FH02A TFT LCD module is engineered not only for standard deployment but also as a versatile platform for tailored display solutions. Chenghao Optoelectronic offers a comprehensive customization pathway that begins with a detailed consultation to align technical specifications with end-application requirements. One key aspect involves interface adaptation: while the base model uses LVDS, the module can be reconfigured to support alternative signaling protocols such as MIPI, eDP, RGB, or even parallel MCU interfaces—enabling integration into legacy or specialized control architectures without requiring external bridge ICs. Another critical customization dimension lies in environmental hardening. For applications exposed to extreme thermal conditions, the operating temperature range can be extended beyond the standard -20°C to +70°C, reaching as low as -45°C or as high as +90°C through enhanced liquid crystal formulations and reinforced backlight components. Additionally, optical performance can be fine-tuned; brightness levels are adjustable from the default 300 cd/m² up to 3500 cd/m², with optional anti-glare or anti-reflective surface treatments to maintain visibility under direct sunlight or high-humidity settings. Mechanical and structural modifications further enhance adaptability. The FPC (Flexible Printed Circuit) can be reshaped or repositioned, and pin assignments modified to match specific connector layouts. A custom cover glass—available in varied thicknesses, cutouts, or silk-screened markings—can be laminated directly onto the display, improving durability and aesthetic integration. Moreover, capacitive or resistive touch layers may be factory-integrated with optimized bonding processes to ensure optical clarity and mechanical robustness. This end-to-end customization approach ensures the CH156FH02A meets precise functional, environmental, and spatial demands across diverse industrial and commercial domains.

FAQ:

Q1: What is the brand and model number of this TFT LCD Display?

A1: The TFT LCD Display is from Chenghao Optoelectronic, and the model number is CH156FH02A.

Q2: Where is the place of origin for this product?

A2: This product is manufactured in Shenzhen, China.

Q3: What certifications does this TFT LCD Display have?

A3: The product is certified with CE, ISO9001, RoHS, and SGS.

Q4: What is the minimum order quantity and supply capacity?

A4: The minimum order quantity is 100 pieces, and the supply ability is 50,000,000 pieces per month.

Q5: How is the product packaged and what is the delivery time?

A5: All products are packed carefully to ensure safety. Small-sized products use tray plus carton packaging, while bigger sizes use foam slot plus carton. Custom packaging is also available based on customer requirements. The delivery time is typically between 3 to 7 days.

Q6: What payment methods are accepted for purchasing this TFT LCD Display?

A6: Payment terms include T/T (Telegraphic Transfer), AliPay, and PayPal.



Shenzhen ChengHao Optoelectronic Co., Ltd.



+86 755-27806536



add@chenghaolcm.com



chenghaolcd.com

7th floor, building C5, Hengfeng Industrial City, Hangcheng street, Bao'an District, Shenzhen