

15.6 Inch Display Module 12 O'clock Viewing Direction TN Tft Screen

Our Product Introduction

for more products please visit us on chenghaolcd.com

Basic Information

- Brand Name: Chenghao Optoelectronic
- Certification: CE, ISO9001, Rose, SGS
- Model Number: CH156FH02A
- Minimum Order Quantity: 100 Pcs
- Packaging Details: All The Products Are Packed In Right Way To Keep It Safe. For Small Sizes Of Products We Use Tray + Carton, For Bigger Sizes We Use Foam Slot + Carton. We Also Design Packages According To Customers' Requirements
- Delivery Time: 3~7 Days
- Payment Terms: T/T, AliPay, PayPal
- Supply Ability: 50000000 Pcs/month



Product Specification

- Module Type: 15.6" TFT
- Viewing Direction: 12:00
- Resolution: 1920*1080 Dots
- Screen Brightness: 300 Cd/m2
- Storage Temperature: -30 ~ +80
- Operating Temperature: -20 ~ +70
- Display Mode: TN/Transmissive/Normally White
- Lcd Interface: LVDS
- Highlight: 15.6 inch TN TFT screen,
12 o'clock viewing direction display,
15.6 inch LCD display module



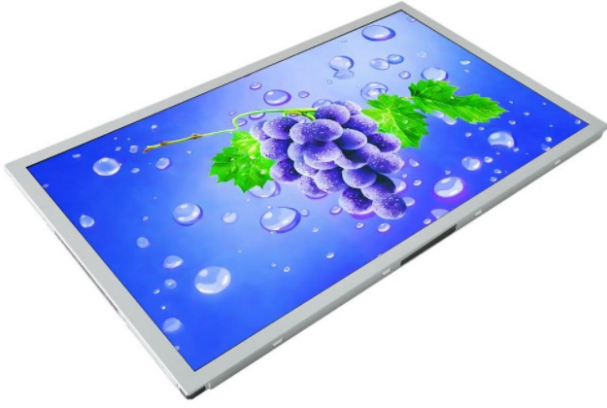

More Images





Product Description

Product Description:

	<p>The CH156FH02A is a high-performance 15.6-inch TFT display module meticulously crafted by Chenghao Optoelectronics. This module boasts a resolution of 1920*1080 pixels, 16 million colors, and a 500:1 contrast ratio, delivering vivid and clear visuals suitable for various professional applications. Utilizing TN/transmissive/normal white display modes and a 12 o'clock viewing angle design, the module offers a wide viewing angle and uniform brightness distribution. Its 300 cd/m² backlight brightness meets standard usage requirements, while also supporting customized brightness up to 3500 cd/m² to suit special scenarios.</p>
<p>The module is equipped with an LVDS interface to ensure stable and reliable data transmission. Its operating temperature range is -20~+70 , and its storage temperature range is -30~+80 , allowing it to withstand various harsh environmental conditions.</p>	
<p>The module measures 370 x 2179.3 mm, with an effective display area of 344 x 193 mm, achieving a good balance between compact design and ample display space. This module supports extensive customization services to meet the specific needs of various industries, including customized FPC shape, structure, and pin count; multiple interface options (SPI, MCU, RGB, etc.); adjustable operating temperature (-10~+60 to -45~+90); glass cover modification; and optional touch functionality integration. Furthermore, additional features such as anti-glare treatment and electromagnetic interference resistance further expand its application range in professional fields such as industrial control, medical equipment, and automotive displays.</p>	

Features:

High-Resolution Clear Display

This display module features a 1920*1080 Full HD resolution, capable of outputting 16M colors, meeting the high-definition display needs of various application scenarios.

Flexible Screen Brightness Selection

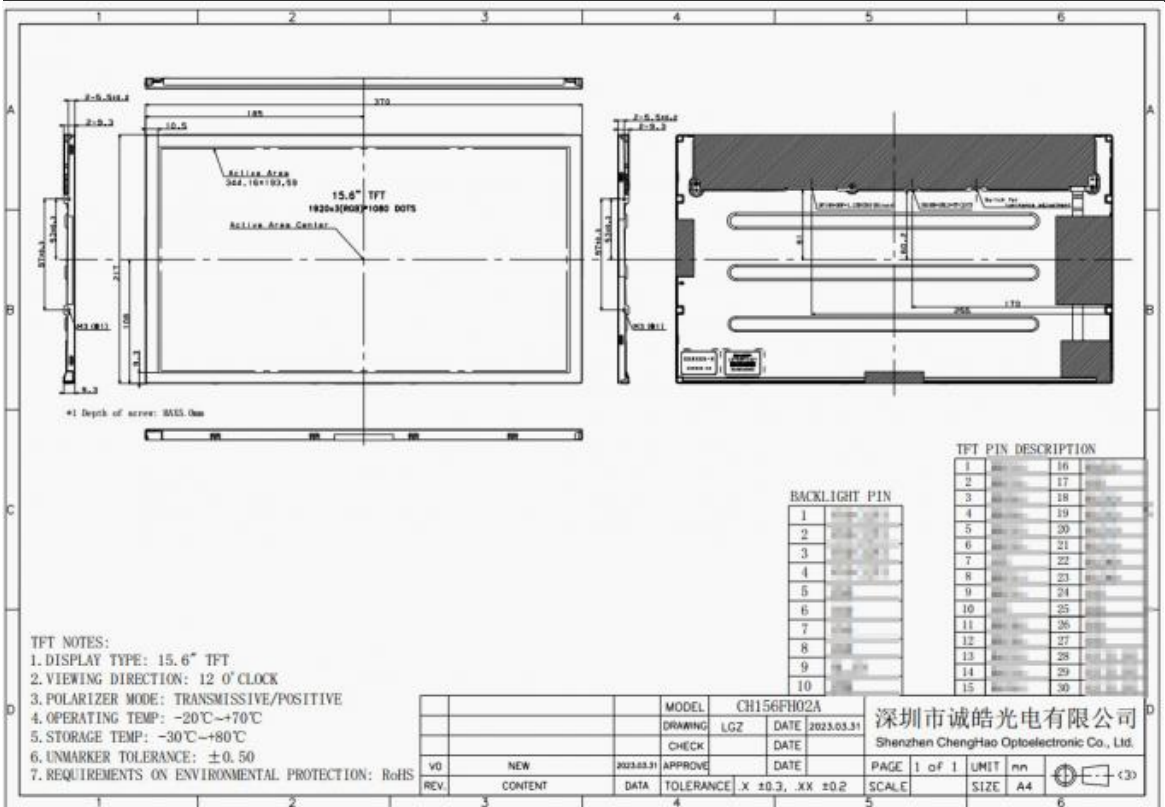
The module comes standard with a screen brightness of 300 cd/m², satisfying the visual needs of most general scenarios. In addition to the standard configuration, it also offers rich brightness customization capabilities, allowing for flexible adjustment between 300 cd/m² and 3500 cd/m². This flexibility enables it to adapt to diverse lighting environments, ensuring clear visibility whether in dimly lit indoor spaces requiring soft brightness or in bright outdoor environments needing higher brightness to combat glare.

Wide Temperature Adaptability

The CH156FH02A boasts a robust temperature resistance design, with an operating temperature range of -20 to +70 and a storage temperature range of -30 to +80 . This wide temperature adaptability enables the module to work stably in harsh environmental conditions, resisting the adverse effects of extreme cold or high temperature, eliminating concerns about performance degradation due to temperature fluctuations, and making it suitable for application scenarios with unstable or extreme temperatures.

Technical Parameters:

Module Type	15.6" TFT
Viewing Direction	12:00
LCD Interface	LVDS
Storage Temperature	-30 ~ +80
Resolution	1920*1080 Dots
Active Area Size	344*193 Mm
Screen Brightness	300 Cd/m2
Display Mode	TN/Transmissive/Normally White
Module Size	370*217*9.3 Mm
Operating Temperature	-20 ~ +70



Customization:

The CH156FH02A is a 15.6-inch TFT LCD module launched by Shenzhen Chenghao Optoelectronics Co., Ltd. Leveraging the manufacturer's professional expertise in TFT LCD technology and standardized customization processes, it offers comprehensive and flexible customization services to meet the diverse needs of various industrial and professional scenarios.

In terms of hardware and structural customization, the flexible printed circuit board (FPC) customization goes beyond basic shape and pin count adjustments. Based on the module's 12V power supply configuration, the FPC pin definitions can be customized according to the customer's system power supply requirements, ensuring seamless compatibility with host devices. Furthermore, the default maximum screw depth of 5.0 mm is adjustable—customers can specify shorter or optimized depth parameters and hole layouts according to their own mounting fixture requirements, improving assembly efficiency.

Optical performance customization is highly flexible. The default transmissive/positive polarizer mode can be adjusted according to specific visual needs, and the standard 12 o'clock viewing direction can also be customized to other orientations, ensuring optimal viewing effects in scenarios with fixed viewing angles. The screen brightness starts at a standard 300 cd/m² and can be calibrated within a range of 300 cd/m² to 3500 cd/m². Precise adjustment of brightness uniformity is also possible to suit dimly lit indoor environments or brightly lit outdoor scenarios.

Environmental adaptability and compliance customization further expand the module's application range. The product itself complies with RoHS environmental standards and can be upgraded to more stringent environmental regulations based on different regional or industry requirements. The operating temperature range (-20 ~ +70 °) and storage temperature range (-30 ~ +80 °) can be extended to a wide temperature range of -45 ~ +90 through material and component optimization, ensuring stable operation in extreme low or high temperature environments. Furthermore, professional shielding design enhances electromagnetic interference (EMI) immunity to adapt to complex electromagnetic environments.

Structural and surface customization includes glass cover modification: customers can customize the cover's shape, thickness, and opening position, and add industry-specific silkscreen markings, symbols, or light-shielding patterns. The anti-glare level is also adjustable – from mild anti-glare to meet clear imaging needs, to high anti-glare for strong light environments, without affecting display clarity. In terms of functionality, in addition to optional capacitive or resistive touch, touch sensitivity can be calibrated according to specific application scenarios. Interface customization supports multiple protocols besides LVDS, including SPI, MCU, and RGB, and data transmission parameters can be optimized for specific application transmission rate requirements.

FAQ:

Q1: What is the model number of the TFT LCD Display offered by Chenghao Optoelectronic?

A1: The model number of the TFT LCD Display is CH156FH02A.

Q2: Where is the Chenghao Optoelectronic TFT LCD Display manufactured?

A2: The TFT LCD Display is manufactured in Shenzhen, China.

Q3: What certifications does the CH156FH02A TFT LCD Display have?

A3: The CH156FH02A TFT LCD Display is certified with CE, ISO9001, RoHS, and SGS.

Q4: What is the minimum order quantity for the CH156FH02A TFT LCD Display?

A4: The minimum order quantity is 100 pieces.

Q5: How does Chenghao Optoelectronic package the TFT LCD Display to ensure safety during shipping?

A5: For small sizes, products are packed using tray plus carton; for bigger sizes, foam slot plus carton is used. Packaging can also be customized according to customer requirements to ensure safety.

Q6: What is the typical delivery time for orders of the CH156FH02A TFT LCD Display?

A6: The delivery time ranges from 3 to 7 days.

Q7: What payment methods are accepted for purchasing the TFT LCD Display?

A7: Payment can be made via T/T, AliPay, or PayPal.

Q8: What is the monthly supply capacity for the CH156FH02A TFT LCD Display?

A8: Chenghao Optoelectronic can supply up to 50,000,000 pieces per month.



Shenzhen ChengHao Optoelectronic Co., Ltd.



+86 755-27806536



add@chenghaolcm.com



chenghaolcd.com

7th floor, building C5, Hengfeng Industrial City, Hangcheng street, Bao'an District, Shenzhen