

15.6 Inch Lcd Display 1080*1920 High Resolution Full Color Lcd Screen Panel

Our Product Introduction

for more products please visit us on chenghaolcd.com

Basic Information

- Brand Name: Chenghao Optoelectronic
- Certification: CE, ISO9001, Rose, SGS
- Model Number: CH156FH02A
- Minimum Order Quantity: 100 Pcs
- Packaging Details: All The Products Are Packed In Right Way To Keep It Safe. For Small Sizes Of Products We Use Tray + Carton, For Bigger Sizes We Use Foam Slot + Carton. We Also Design Packages According To Customers' Requirements
- Delivery Time: 3~7 Days
- Payment Terms: T/T, AliPay, PayPal
- Supply Ability: 50000000 Pcs/month



Product Specification

- Viewing Direction: 12:00
- Resolution: 1920*1080 Dots
- Storage Temperature: -30 ~ +80
- Operating Temperature: -20 ~ +70
- Lcd Interface: LVDS
- Display Mode: TN/Transmissive/Normally White
- Module Type: 15.6" TFT
- Module Size: 370*217*9.3 Mm
- Highlight: 15.6 inch LCD display panel,
Full color TFT LCD screen,
High resolution LCD display 1080x1920



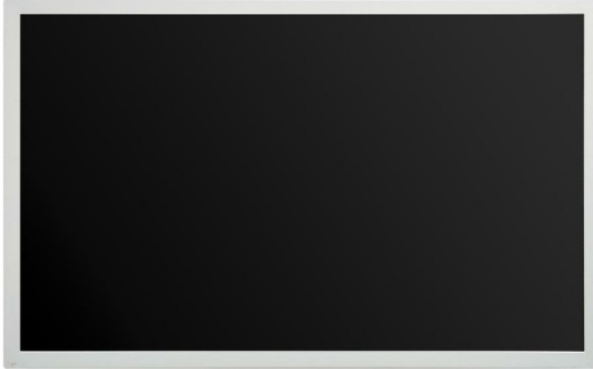
More Images





Product Description

Product Description:



The CH156FH02A is a 15.6-inch TFT LCD display module designed and manufactured by Chenghao Optoelectronics, boasting a full HD resolution of 1920x1080. This module employs a TN transmissive display mode, equipped with a constant-brightness white polarizer, and features a brightness of 300 cd/m² and a contrast ratio of 500, delivering clear and sharp image quality. The display supports a 12 o'clock viewing angle, ensuring consistent image quality when viewed from above. Its 16 million color depth enables vivid and accurate color reproduction, making it suitable for various professional applications.

This display module utilizes an LVDS low-voltage differential signal interface, ensuring stable and high-speed data transmission. The module measures 370 mm × 217 mm × 9.3 mm, with a view area of 344 mm × 193 mm, suitable for medium to large-sized display needs.

It operates within a temperature range of -20 to +70 and a storage temperature range of -30 to +80, enabling it to adapt to various environmental conditions and making it suitable for industrial and commercial use. This module does not have a built-in touchscreen, but it supports optional capacitive or resistive touchscreens to meet the customization needs of different projects. Chenghao Optoelectronics offers a wide range of customization services, including FPC shape and pin count adjustments, LCD interface customization (supporting SPI, MCU, RGB, MIPI, LVDS, EDP, HDMI, etc.), backlight brightness adjustment (from 300 cd/m² to 3500 cd/m²), operating temperature extension, glass cover thickness, shape, and anti-glare treatment. Furthermore, electromagnetic interference immunity can be added to improve the module's stability in complex electronic environments.



Features:

External Dimensions

The CH156FH02A module measures 370 mm wide, 217 mm high, and 9.3 mm thick. This size is suitable for medium to large-sized equipment and instruments, providing a large display area. Its slim 9.3 mm thickness allows for easy installation in space-constrained applications without compromising screen size.

LCD Interface Type

This display module uses an LVDS (Low Voltage Differential) interface with a 30-pin FPC connector. LVDS is known for its high-speed data transmission and low electromagnetic interference, ensuring stable and reliable image quality. The LVDS interface allows the module to be compatible with various industrial and commercial controllers, facilitating integration into complex electronic systems.

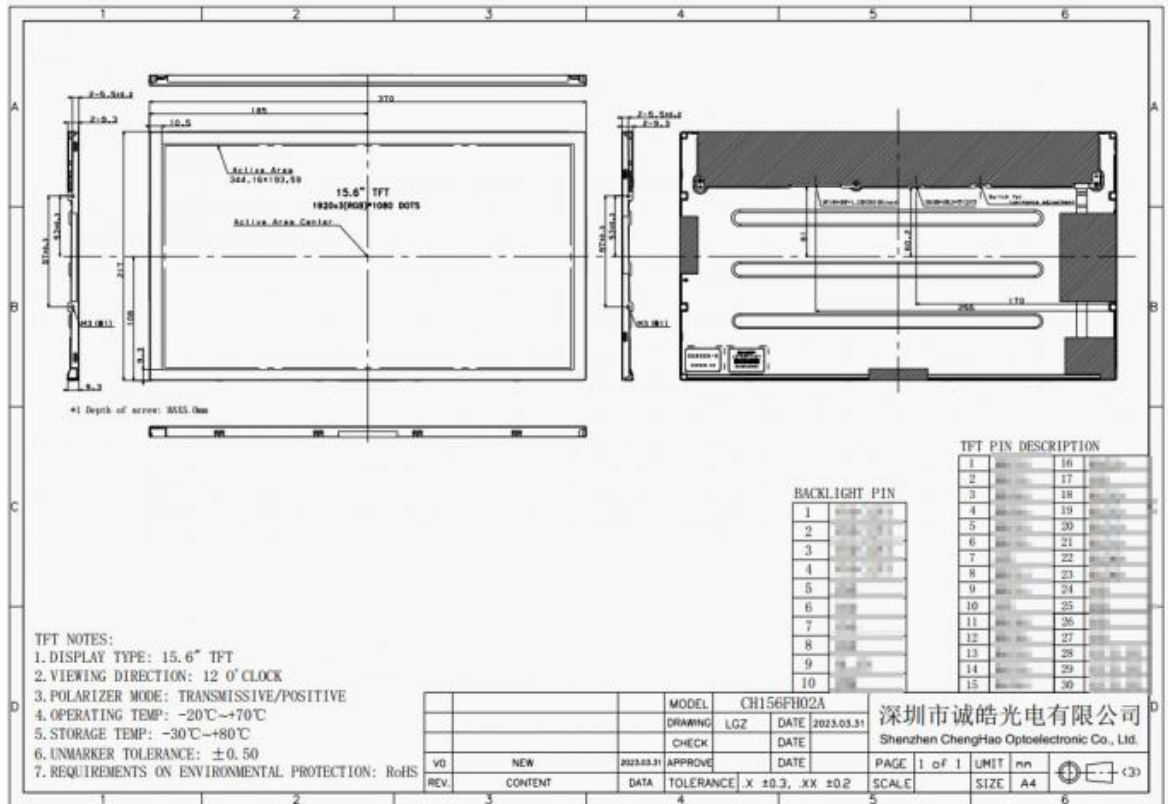
Operating Temperature Range

The CH156FH02A supports an operating temperature range of -20°C to +70°C, suitable for most standard industrial and commercial environments. While not extremely wide, this temperature range is sufficient for most indoor and moderate outdoor applications, ensuring stable performance under normal operating conditions.

Technical Parameters:

| | |
|-------------------|--------------------------------|
| Display Mode | TN/Transmissive/Normally White |
| Screen Brightness | 300 Cd/m ² |

| | |
|-----------------------|----------------|
| Viewing Direction | 12:00 |
| Storage Temperature | -30 ~ +80 |
| Resolution | 1920*1080 Dots |
| LCD Interface | LVDS |
| Module Type | 15.6" TFT |
| Operating Temperature | -20 ~ +70 |
| Active Area Size | 344*193 mm |
| Module Size | 370*217*9.3 mm |



Support and Services:

Chenghao Optoelectronics provides comprehensive support and services for the CH156FH02A display module, ensuring customer satisfaction and product reliability. Customers purchasing the CH156FH02A will enjoy a 13-month warranty period. During this period, the company will promptly address any defects or problems with the product. If technical difficulties are encountered during testing or use, Chenghao's technical team provides remote online support to quickly troubleshoot and resolve issues.

As an ISO-certified factory supplier, Chenghao Optoelectronics conducts rigorous quality inspections and tests on all CH156FH02A modules to ensure that each product meets specifications and environmental standards such as RoHS. Furthermore, the company can provide relevant certification documents upon request to support customer compliance requirements.

If a problem occurs within 30 days of delivery, the company provides a replacement service to minimize customer downtime. The company maintains long-term partnerships with multiple express and logistics companies, supporting fast delivery and preferential shipping rates for international orders.

Overall, Chenghao Optoelectronics' after-sales service team is committed to providing customers with strong technical and logistical support to ensure that customers receive reliable assistance during the use of the CH156FH02A module.

FAQ:

Q1: What is the model number and brand of this TFT LCD Display?

A1: The TFT LCD Display is from the brand Chenghao Optoelectronic, and the model number is CH156FH02A.

Q2: Where is this TFT LCD Display manufactured?

A2: This product is manufactured in Shenzhen, China.

Q3: What certifications does the CH156FH02A TFT LCD Display have?

A3: The display holds certifications including CE, ISO9001, RoHS, and SGS.

Q4: What is the minimum order quantity for this TFT LCD Display?

A4: The minimum order quantity for the CH156FH02A model is 100 pieces.

Q5: How are the TFT LCD Displays packaged to ensure safety during shipping?

A5: For small-sized products, packaging includes tray and carton. For larger sizes, foam slot plus carton is used. Packaging can also be customized according to customer requirements to ensure product safety.

Q6: What is the typical delivery time for orders of this TFT LCD Display?

A6: The delivery time usually ranges from 3 to 7 days.

Q7: What payment methods are accepted for purchasing the CH156FH02A TFT LCD Display?

A7: Accepted payment methods include T/T (bank transfer), AliPay, and PayPal.

Q8: What is the supply capacity of Chenghao Optoelectronic for this TFT LCD Display?
A8: The company can supply up to 50,000,000 pieces per month.



Shenzhen ChengHao Optoelectronic Co., Ltd.

+86 755-27806536 add@chenghaolcm.com chenghaolcd.com

7th floor, building C5, Hengfeng Industrial City, Hangcheng street, Bao'an District, Shenzhen