



## 4.3-inch IPS TFT LCD Display 800×480 Resolution Capacitive Touchscreen SPI Interface

### Our Product Introduction

for more products please visit us on [chenghaolcd.com](http://chenghaolcd.com)

#### Basic Information

- Brand Name: Chenghao Optoelectronic
- Certification: CE、RoHS、FCC
- Model Number: CH430WQ22A-CT
- Minimum Order Quantity: 100 Pcs
- Packaging Details: All The Products Are Packed In Right Way To Keep It Safe. For Small Sizes Of Products We Use Tray + Carton, For Bigger Sizes We Use Foam Slot + Carton. We Also Design Packages According To Customers' Requirements
- Delivery Time: 3~7 Days
- Payment Terms: TT Or Others
- Supply Ability: 50000000 Pcs/month



#### Product Specification

- Screen Brightness: 800 Cd/m2
- Display Mode: IPS/Transmissive/Normally Black
- Lcd Type: 5.0" TFT
- Screen Size: 4.3 Inch
- Lcd Interface: SPI
- Touch Interface: IIC
- Storage Temperature: -30 ~ +80
- Contrast: 800
- Highlight: 4.3-inch IPS LCD display module, 800×480 capacitive touchscreen display, SPI interface TFT LCD module



#### More Images





## Product Description

### Product Description:

The CH430WQ22A-CT is a high-performance 4.3-inch landscape TFT LCD display module featuring an 800×480 resolution and integrated capacitive touch panel. Built with IPS technology, it delivers vivid 16.7M colors, a wide viewing angle of 80° in all directions, and a high brightness of 800 cd/m<sup>2</sup>—customizable up to 1500 cd/m<sup>2</sup> for demanding environments. The module measures 105.5×67.2×4.75 mm with a 95.04×53.86 mm active display area, making it ideal for compact yet high-clarity applications. It supports multiple interface options including SPI, MCU, RGB, LVDS, and HDMI, while the capacitive touch functionality operates via I<sup>2</sup>C. Designed for reliability, it functions seamlessly from -20°C to +70°C and can be stored between -30°C and +80°C. This versatile display is suited for industrial HMIs, medical devices, automotive systems, and smart retail terminals.



### Features:

**High Clarity & Wide Viewing:** 800×480 resolution on a 4.3" IPS panel ensures sharp images with consistent color from any angle (80/80/80/80).

**Bright & Adaptable Backlight:** Standard 800 cd/m<sup>2</sup> brightness, scalable to 1500 cd/m<sup>2</sup> for outdoor or high-ambient-light use.

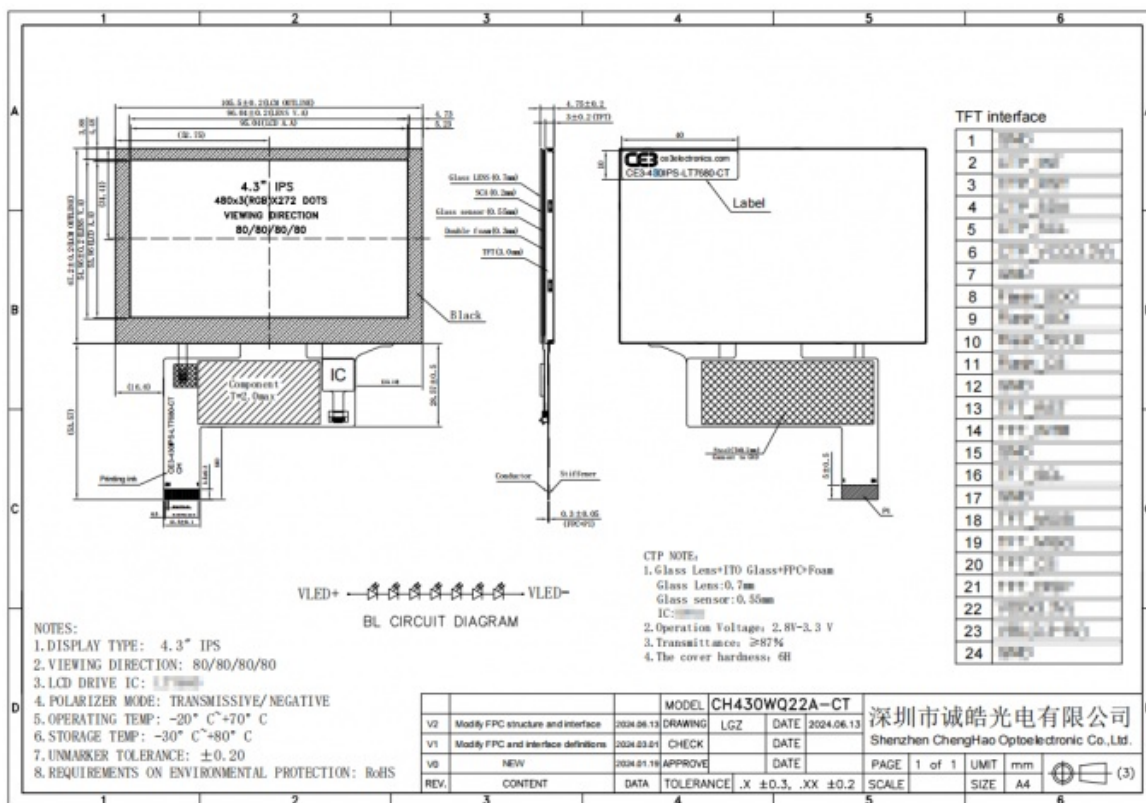
**Flexible Interface Support:** Ships with SPI but can be configured for MCU, RGB, LVDS, MIPI, eDP, or HDMI based on system needs.

**Robust Environmental Tolerance:** Operates reliably from -20°C to +70°C; storage range extends to -30°C~+80°C.

**Integrated Capacitive Touch:** Responsive I<sup>2</sup>C-based CTP enhances user interaction without compromising display quality.

### Technical Parameters:

Screen Size	4.3 Inch
Viewing Direction	80/80/80/80
Operating Temperature	-20 ~ +70
Contrast	800
Screen Brightness	800 Cd/m <sup>2</sup>
Touch Interface	IIC
Module Type	4.3" TFT+CTP
Color	16M
Storage Temperature	-30 ~ +80
Display Mode	IPS / Transmissive / Normally Black



## Customization:

Chenghao Optoelectronic offers extensive customization for the CH430WQ22A-CT to meet diverse application requirements. Clients can tailor the FPC layout—including pin count, shape, and routing—to match their PCB design. Interface flexibility allows integration of single or multiple signaling standards such as SPI, RGB, LVDS, or HDMI within one module. Backlight intensity can be adjusted from 300 to 1500 cd/m<sup>2</sup> (or higher upon request), ensuring optimal visibility across lighting conditions. For extreme environments, operating temperature ranges can be extended to -45°C~+90°C. Additional customizations include anti-glare surface treatment, EMI shielding, reinforced glass covers with custom cutouts or silk screening, and optional resistive touch or no-touch configurations. Each modification undergoes rigorous validation to maintain optical and mechanical integrity.

## Support and Services:

Chenghao Optoelectronics provides end-to-end technical support for the CH430WQ22A-CT, from evaluation to mass production. Customers receive complete technical documentation, including datasheets, timing diagrams, and reference schematics. Our engineering team can quickly assist with driver integration, touch calibration, and interface configuration. We also provide samples for prototyping and can conduct compatibility testing upon request. After-sales service includes a 13-month product warranty and remote online technical assistance to help customers accelerate product launch. Leveraging ISO-certified production lines and an efficient global logistics system, Chenghao ensures stable delivery and long-term supply guarantees for industrial and commercial customers worldwide.

## FAQ:

**Q1: What is the model number of this LCD Display Module?**

A1: The model number of this LCD Display Module is CH430WQ22A-CT.

**Q2: Which certifications does the Chenghao Optoelectronic LCD Display Module have?**

A2: This product is certified with CE, RoHS, and FCC certifications.

**Q3: What is the minimum order quantity for the CH430WQ22A-CT LCD Display Module?**

A3: The minimum order quantity for this LCD Display Module is 100 pieces.

**Q4: How is the LCD Display Module packaged for shipping?**

A4: All products are packed securely to ensure safety during shipping. Small-sized products use tray plus carton packaging, while bigger sizes use foam slot plus carton packaging. Custom packaging can also be designed according to customer requirements.

**Q5: What is the typical delivery time for orders of the CH430WQ22A-CT model?**

A5: The usual delivery time is between 3 to 7 days.

**Q6: What payment terms are accepted for purchasing this LCD Display Module?**

A6: Payment terms include TT (Telegraphic Transfer) or other mutually agreed methods.

**Q7: What is the monthly supply capacity for the Chenghao Optoelectronic LCD Display Module?**

A7: The supply ability is up to 50,000,000 pieces per month.



**Shenzhen ChengHao Optoelectronic Co., Ltd.**



+86 755-27806536



add@chenghaolcm.com



chenghaolcd.com

7th floor, building C5, Hengfeng Industrial City, Hangcheng street, Bao'an District, Shenzhen