



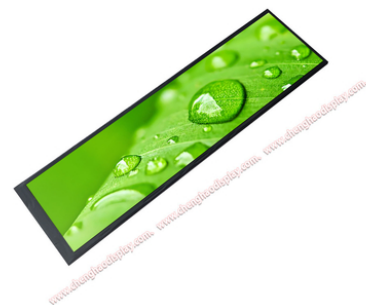
1920 480 Long Strip MIPI LCD Display Module 8 Inch IPS TFT Screen For Industrial Applications

Our Product Introduction

for more products please visit us on chenghaolcd.com

Basic Information

- Brand Name: Chenghao Optoelectronic
- Certification: CE, ISO9001, Rose, SGS
- Model Number: CH800FH01A
- Minimum Order Quantity: 100 Pcs
- Packaging Details: All The Products Are Packed In Right Way To Keep It Safe. For Small Sizes Of Products We Use Tray + Carton, For Bigger Sizes We Use Foam Slot + Carton. We Also Design Packages According To Customers' Requirements
- Delivery Time: 3~7 Days
- Payment Terms: T/T, AliPay, PayPal
- Supply Ability: 50000000 Pcs/month



Product Specification

- Outline Size: 231.3x64.3x4.8 Mm
- Display Mode: IPS/Transmissive/Normally Black
- Viewing Area: 219.48x55.32 Mm
- Color: 16M
- Viewing Direction: 80/80/80
- Contrast: 800 1
- Operating Temperature: -20 ~ +70
- Interface: MIPI
- Highlight: 8 inch IPS TFT screen ,
MIPI LCD display module,
industrial LCD display module





More Images



Product Description

Product Description:

The CH880FH01A, an 8 inch long strip TFT LCD module engineered as a pure display component (no built-in storage, requiring external control panel connection), is a space-efficient solution crafted by Chenghao Optoelectronic for device manufacturers facing narrow installation constraints. Unlike integrated display units, it focuses solely on delivering reliable visual output, relying entirely on customers' control systems to activate and transmit data—making it a flexible, cost-effective choice for specialized display needs.

	Measuring 231.3x64.3 mm with a 218.88x54.72 mm active display area, this 8 inch long strip TFT LCD module's elongated form fits seamlessly into compact devices like industrial control panels or smart home control strips, where traditional square screens waste valuable internal space.
Its IPS/transmissive/normally black design ensures 80/80/80/80 viewing angles—users from any position see consistent colors and brightness, critical for multi-operator scenarios. With 480x1920 resolution and 16M color support, it renders small text (e.g., sensor data) and simple graphics clearly, while 500 cd/m ² brightness guarantees visibility in bright workshops or well-lit homes.	

Equipped with a standard MIPI interface, the module enables easy, stable connection to external control panels—fewer pins reduce wiring complexity, and low electromagnetic interference ensures smooth signal transmission for real-time data display. Built to withstand -20~+70 operation and -30~+80 storage, it adapts to cold warehouses or warm indoor spaces without extra cooling/heating. As a factory-wholesaled component (100-piece MOQ), it balances quality and affordability, with sample availability for pre-integration testing—ideal for manufacturers prioritizing compatibility and space efficiency in their end products.

Features:

(1) Long Strip Design for Horizontal Information Layout: With a 231.3x64.3 mm module size and 218.88x54.72 mm active area, the long strip structure is optimized for horizontal data presentation. It allows sequential display of multi-group information (e.g., production line station numbers + real-time speeds in industrial control, or room temperatures + device status in smart homes) without splitting content into multiple screens, enhancing information readability in narrow installation spaces.

(2) Full Viewing Direction with Consistent Visual Experience: Adopting IPS technology to achieve 80/80/80/80 full viewing directions, it ensures no brightness attenuation or color deviation when viewed from extreme angles (e.g., 80 degrees from the top or bottom). This is particularly critical for devices installed in high or low positions (such as wall-mounted smart home control strips or overhead industrial dashboards), where users may not always view the screen frontally.

(3) 480x1920 Full HD Resolution for Fine Detail Rendering: The 480x1920 Full HD resolution delivers a high pixel density of approximately 85 PPI, enabling clear rendering of fine elements like small-scale data charts (e.g., 12-hour temperature trend curves) or tiny icon details (e.g., status indicators for IoT devices). Unlike lower-resolution modules, it avoids blurring of edge details, ensuring accurate information recognition.

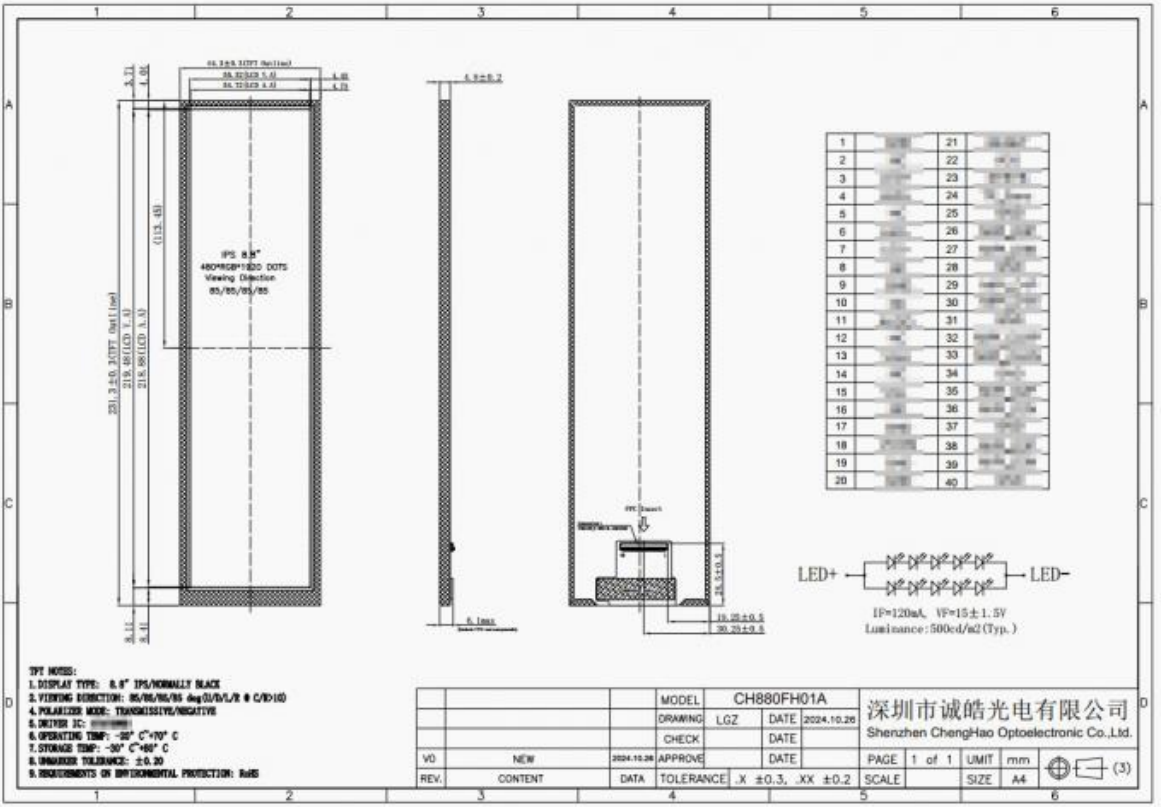
(4) MIPI Interface for Space-Saving Connection: The standard MIPI interface uses a compact pin layout (fewer than 20 pins) compared to traditional parallel interfaces, reducing the space occupied by wiring on the customer's control panel. Additionally, MIPI's differential signal transmission supports longer-distance data transfer (up to 1 meter) between the module and control panel, providing more flexibility in device internal layout design.

(5) -20 ~ +70 Wide Temperature Range for Uninterrupted Operation: The module maintains stable display performance across the -20 ~ +70 operating range—at -20 , the backlight lights up instantly without preheating; at +70 , the driver IC avoids overheating-induced signal delays. This wide temperature adaptability eliminates the need for additional heating or cooling modules, ensuring uninterrupted use in seasonal temperature-fluctuating environments (e.g., semi-outdoor IoT monitoring terminals).

Technical Parameters:

Resolution	480x1920 Dots
Outline Size	231.3x64.3x4.8 Mm

Active Area	218.88x54.72 Mm
Interface	MIPI
Screen Brightness	500 Cd/m2
Storage Temperature	-30 ~ +80
Viewing Area	219.48x55.32 Mm
Contrast	800:1
Display Mode	IPS/Transmissive/Normally Black
Operating Temperature	-20 ~ +70



Applications:

The Chenghao Optoelectronic CH800FH01A TFT LCD Display is a versatile product suitable for a wide range of application occasions and scenarios. With its 7-inch LCD screen, this display is perfect for various industries and purposes. One key application scenario for the CH800FH01A is in automotive systems such as car infotainment displays or rear-seat entertainment systems. The high resolution of 480x1920 dots ensures clear and crisp visuals, making it ideal for displaying navigation maps, multimedia content, and vehicle information. Another common application for this TFT LCD display is in industrial control panels. The 7-inch LCD screen provides ample space for displaying complex data and graphics, while the MIPI interface allows for easy integration with existing systems.



For medical equipment manufacturers, the Chenghao Optoelectronic CH800FH01A is a reliable choice for patient monitoring systems or diagnostic devices. The high contrast ratio of 800:1 ensures accurate representation of medical images and data, while the wide viewing area of 219.48x55.32 mm allows for easy viewing by medical professionals. Additionally, this TFT LCD display is well-suited for point-of-sale terminals in retail environments. The fast delivery time of 3~7 days and the option for small order quantities make it easy for retailers to quickly upgrade their POS systems with this high-quality display. Overall, the Chenghao Optoelectronic CH800FH01A TFT LCD Display is a versatile and reliable product with a wide range of applications. Whether used in automotive systems, industrial control panels, medical equipment, or retail POS terminals, this 7-inch LCD screen delivers excellent performance and durability.

FAQ:

Q: What is the brand name of this TFT LCD Display?

A: The brand name of this TFT LCD Display is Chenghao Optoelectronic.

Q: What is the model number of this TFT LCD Display?

A: The model number of this TFT LCD Display is CH800FH01A.

Q: Where is this TFT LCD Display manufactured?

A: This TFT LCD Display is manufactured in China, Shenzhen.

Q: What certifications does this TFT LCD Display have?

A: This TFT LCD Display is certified with CE, ISO9001, RoHS, and SGS.

Q: What are the payment terms for purchasing this TFT LCD Display?

A: The payment terms for purchasing this TFT LCD Display are T/T, AliPay, and PayPal.



Shenzhen ChengHao Optoelectronic Co., Ltd.



+86 755-27806536



add@chenghaolcm.com



chenghaolcd.com

7th floor, building C5, Hengfeng Industrial City, Hangcheng street, Bao'an District, Shenzhen