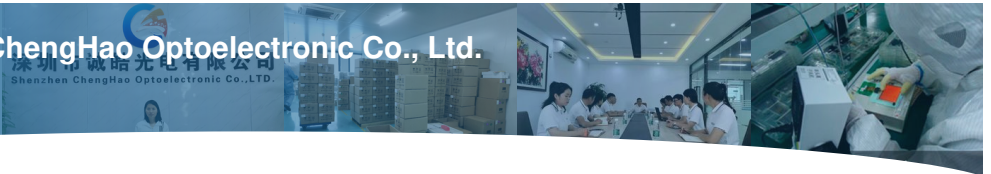




Shenzhen ChengHao Optoelectronic Co., Ltd.

chenghaolcd.com



1920*480 High Resolution Lcd Display Panel 8 Inch Long Strip IPS Screen

Our Product Introduction

for more products please visit us on chenghaolcd.com

Basic Information

- Brand Name: Chenghao Optoelectronic
- Certification: CE, ISO9001, Rose, SGS
- Model Number: CH800FH01A
- Minimum Order Quantity: 100 Pcs
- Packaging Details: All The Products Are Packed In Right Way To Keep It Safe. For Small Sizes Of Products We Use Tray + Carton, For Bigger Sizes We Use Foam Slot + Carton. We Also Design Packages According To Customers' Requirements
- Delivery Time: 3~7 Days
- Payment Terms: T/T, AliPay, PayPal
- Supply Ability: 50000000 Pcs/month



Product Specification

- Viewing Direction: 80/80/80/80
- Outline Size: 231.3x64.3x4.8 Mm
- Screen Brightness: 500 Cd/m2
- Contrast: 800 1
- Resolution: 480x1920 Dots
- Color: 16M
- Operating Temperature: -20 ~ +70
- Display Mode: IPS/Transmissive/Normally Black
- Highlight: 8 inch long strip LCD display , 1920x480 high resolution IPS screen , TFT LCD display panel with warranty



More Images



Product Description

Product Description:

The CH880FH01A, an 8 inch long strip tft lcd module (pure TFT LCD screen, no storage devices included) developed by Chenghao Optoelectronic, is a dedicated display component designed for downstream device manufacturers. Unlike integrated display systems, this product functions solely as a TFT LCD screen—requiring customers to connect it to their own control panels for activation. Its core value lies in providing a high-performance, space-efficient display solution that seamlessly integrates with external control systems, making it ideal for applications where compact, reliable screen components are needed for space-constrained devices.



As a standalone TFT LCD screen, the CH880FH01A excels in fundamental display performance, with no built-in storage or independent operating capabilities. It features a 480x1920 dot resolution and supports 16M colors, enabling sharp rendering of text, data, and graphics once connected to the customer's control panel. The IPS/transmissive/normally black display mode enhances its practicality: IPS technology ensures 80/80/80/80 viewing angles, eliminating color distortion when viewed from side positions—a key advantage for devices used by multiple operators or installed in locations where front-facing viewing is not always feasible. With a standard brightness of 500 cd/m², the screen maintains clear visibility in well-lit indoor environments (such as industrial workshops or retail smart terminals) and moderately bright outdoor settings (like covered IoT monitoring points), without relying on internal power-hungry components.

Structurally optimized for easy connection to external control panels, the 8 inch long strip tft lcd module has an overall size of 231.3x64.3 mm, with a visible area of 219.48x55.32 mm and an active display area of 218.88x54.72 mm. This elongated form factor maximizes usable display space within narrow device interiors, avoiding the space waste associated with traditional square screens—perfect for integration into compact equipment like industrial control units or smart home control panels. The module's construction focuses on essential components for a TFT LCD screen: a high-quality TFT LCD panel, precision driver ICs (to process signals from external control panels), a uniform backlight system, and a flexible FPC (Flexible Printed Circuit). The FPC serves as the critical connection interface, designed to be durable and easy to route, allowing customers to quickly link the screen to their control panels for activation.

Environmental resilience is a key strength of the CH880FH01A, tailored to withstand diverse operating conditions after integration with customer control panels. It operates reliably within a temperature range of -20 ~ +70 , adapting to cold industrial warehouses, warm indoor spaces, and even temperature-fluctuating vehicle cabins (when used as a display component for auxiliary systems). For storage and transportation, it tolerates temperatures from -30 ~ +80 , ensuring inventory remains intact regardless of seasonal or geographic storage conditions. This robustness minimizes damage risks during logistics and installation—addressing a primary concern for manufacturers requiring consistent performance from display components.



To support customer integration needs, Chenghao Optoelectronic offers the 8 inch long strip tft lcd module through a factory wholesale model with a 100-piece MOQ, alongside sample provision for pre-connection testing. As a pure TFT LCD screen, it requires no complex setup beyond linking to the customer's control panel, and its design accommodates customization (e.g., FPC length adjustments, brightness tuning) to match specific control system interfaces and device assembly requirements. Whether integrated into industrial control panels, smart home devices, or IoT terminals, the CH880FH01A stands out as a reliable, no-storage display component that enhances the visual functionality of end products once activated by external control systems.

Features:

Purpose-Built Long Strip Design for Space-Critical Scenarios: Featuring an elongated form factor with 231.3x64.3 mm module size and 218.88x54.72 mm active area, this long strip structure is tailor-made for devices with narrow installation spaces (e.g., industrial control panels, smart home control strips). It maximizes horizontal display coverage while minimizing vertical space occupation, solving the integration challenge of traditional square screens in compact equipment.

Full Viewing Direction with IPS Technology: Adopting IPS display mode, it achieves full viewing direction performance with 80/80/80/80 degrees visibility. This means users can obtain consistent color accuracy and brightness from any angle (front, left, right, top, bottom), eliminating the "viewing dead zone" common in non-IPS screens and ensuring multi-user collaborative operations (e.g., workshop teams checking data) are not restricted by position.

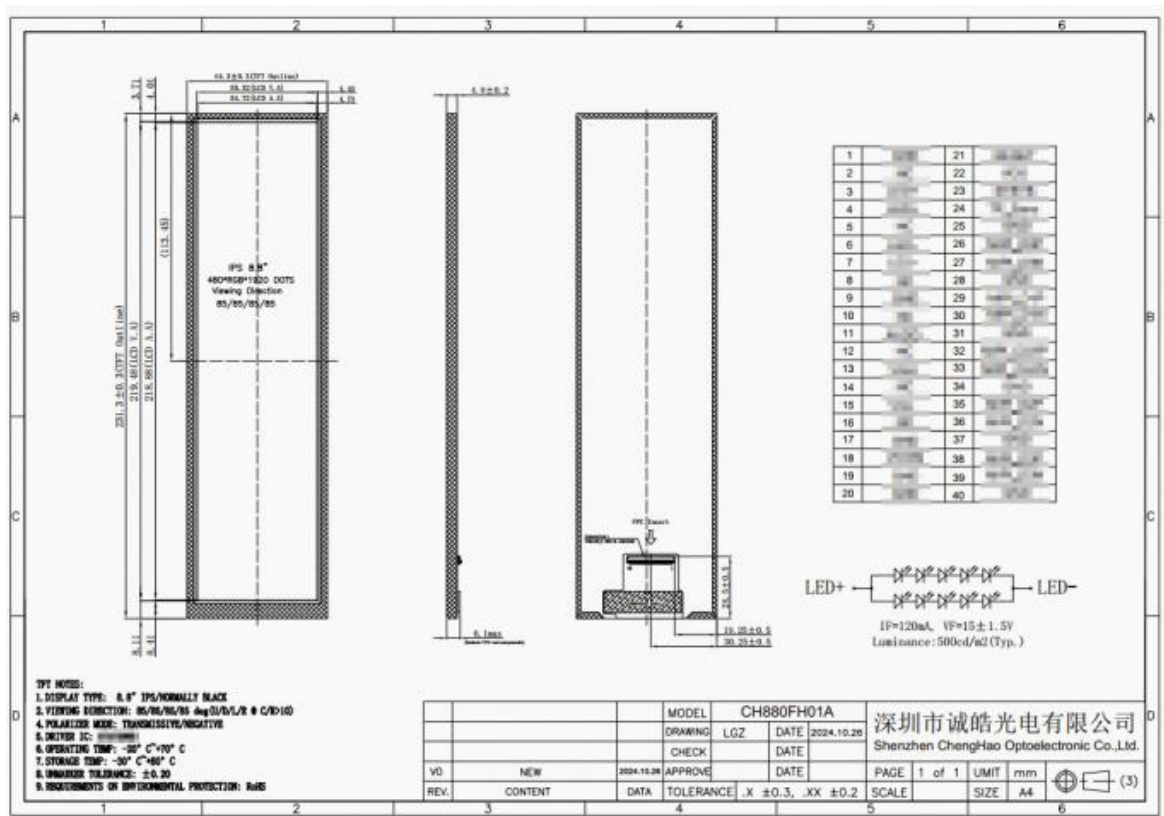
480x1920 Full HD Resolution for Detailed Display: Equipped with 480x1920 Full HD resolution, it delivers high pixel density that renders small text (e.g., industrial sensor parameters, smart home device status) and complex graphics (e.g., real-time data trend charts) with exceptional clarity. Unlike lower-resolution screens, it avoids pixelation even when displaying dense information, meeting the demand for precise visual feedback in professional scenarios.

MIPI Interface for Efficient Signal Transmission: Standardly equipped with MIPI interface, this module enables high-speed, low-latency data transmission between the screen and external control panels. Compared to traditional parallel interfaces, MIPI reduces wiring complexity (with fewer pins) and lowers electromagnetic interference, ensuring stable signal transmission even in high-noise industrial environments—critical for smooth display of real-time data (e.g., vehicle-mounted auxiliary information, IoT terminal readings).

Wide Temperature Range Support for Versatile Environments: Designed to operate stably within -20 ~ +70 , it adapts to diverse harsh environments without performance degradation. This wide temperature range covers cold industrial warehouses (-20), warm indoor smart home settings, and even semi-outdoor IoT monitoring stations (+70), eliminating the need for additional temperature control components and expanding its application scope across multiple industries.

Technical Parameters:

Viewing Area	219.48x55.32 mm
Outline Size	231.3x64.3x4.8 mm
Operating Temperature	-20 ~ +70
Contrast	800:1
Storage Temperature	-30 ~ +80
Interface	MIPI
Active Area	218.88x54.72 mm
Color	16M
Display Mode	IPS/Transmissive/Normally Black
Screen Brightness	500 Cd/m2



Applications:

The Chenghao Optoelectronic CH800FH01A TFT LCD Display is a versatile product suitable for a wide range of application occasions and scenarios due to its impressive features and specifications.

With a brand name known for quality and reliability, this TFT LCD display is perfect for various uses such as:

- Industrial control panels: The high contrast ratio of 800:1 ensures clear visibility of data and graphics on the 7-inch LCD screen, making it ideal for industrial control applications that require precise monitoring and control.
- Automotive displays: The IPS/Transmissive/Normally Black display mode of the CH800FH01A provides excellent color reproduction, making it suitable for use in automotive infotainment systems and instrument clusters.
- Medical equipment: The 16M color support and wide storage temperature range of -30 to +80 make this TFT LCD display ideal for medical devices that require accurate color representation and reliable performance in various environmental conditions.

Overall, the Chenghao Optoelectronic CH800FH01A TFT LCD Display is a reliable and versatile product that caters to a wide range of product application occasions and scenarios, making it a valuable choice for various industries and projects.

FAQ:

Q: What is the brand name of the TFT LCD Display?

A: The brand name is Chenghao Optoelectronic.

Q: What is the model number of the TFT LCD Display?

A: The model number is CH800FH01A.

Q: Where is the TFT LCD Display manufactured?

A: The TFT LCD Display is manufactured in China, specifically in Shenzhen.

Q: What certifications does the TFT LCD Display have?

A: The TFT LCD Display is certified with CE, ISO9001, RoHS, and SGS.

Q: What are the payment terms accepted for purchasing the TFT LCD Display?

A: The accepted payment terms are T/T, AliPay, and PayPal.



Shenzhen ChengHao Optoelectronic Co., Ltd.



+86 755-27806536



add@chenghaolcm.com



chenghaolcd.com

7th floor, building C5, Hengfeng Industrial City, Hangcheng street, Bao'an District, Shenzhen