

## 7 Inch Long Strip Lcd Screen Panel 280x1424 Resolution MIPI Interface IPS TFT Display

### Our Product Introduction

for more products please visit us on [chenghaolcd.com](http://chenghaolcd.com)

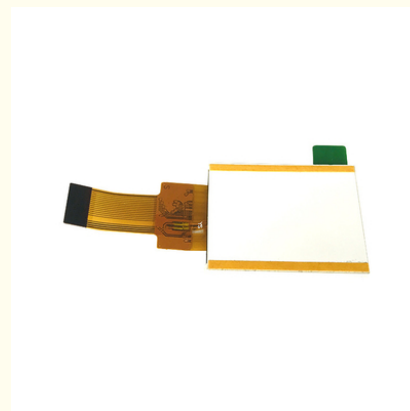
#### Basic Information

- Brand Name: Chenghao Optoelectronic
- Certification: CE、RoHS、FCC
- Model Number: CH700WX08A
- Minimum Order Quantity: 100 Pcs
- Packaging Details: All The Products Are Packed In Right Way To Keep It Safe. For Small Sizes Of Products We Use Tray + Carton, For Bigger Sizes We Use Foam Slot + Carton. We Also Design Packages According To Customers' Requirements
- Delivery Time: 3~7 Days
- Payment Terms: TT Or Others
- Supply Ability: 50000000 Pcs/month



#### Product Specification

- Contrast: 800:1
- Operating Temperature: -20 ~ +70
- Module Size: 38.2x181.47x3.45 Mm
- Active Area Size: 33.6x170.88 Mm
- Display Mode: IPS/Transmissive/Normally Black
- Interface: MIPI
- Storage Temperature: -30 ~ +80
- Resolution: 280x1424 Dots
- Highlight: 7 inch MIPI TFT display,  
IPS LCD screen panel 280x1424,  
long strip TFT LCD display



#### More Images



## Product Description

### Product Description:

The CH700WX08A is a high-performance 7-inch Long Strip TFT LCD module proudly manufactured by Chenghao Optoelectronic, available through factory wholesale with support for samples and customization, and a minimum order quantity (MOQ) of 100 pieces.



In terms of appearance, the module boasts compact dimensions of 38.2x181.47x3.45 mm, with a visible area of 34.2x171.48 mm and an active area of 33.6x170.88 mm. It is a color active matrix TFT LCD that utilizes amorphous silicon TFT as the switching device, integrating essential components including a TFT LCD panel, touch panel, driver IC, backlight, and FPC for reliable operation. Functionally, it adopts an IPS transmissive normally black display mode, delivering a resolution of 280x1424 dots and presenting 16 million vibrant colors. With a brightness of 500 cd/m<sup>2</sup> and 80/80/80/80 viewing directions, it ensures clear, consistent visuals from all angles. It operates stably within a temperature range of -20 ~ +70 and can be stored at -30 ~ +80, making it suitable for diverse application scenarios.



### Features:

Boasts a specialized 7-inch long strip form factor, which is well-suited for applications requiring elongated display spaces, such as industrial control panels, automotive instrument clusters, and smart home control interfaces.

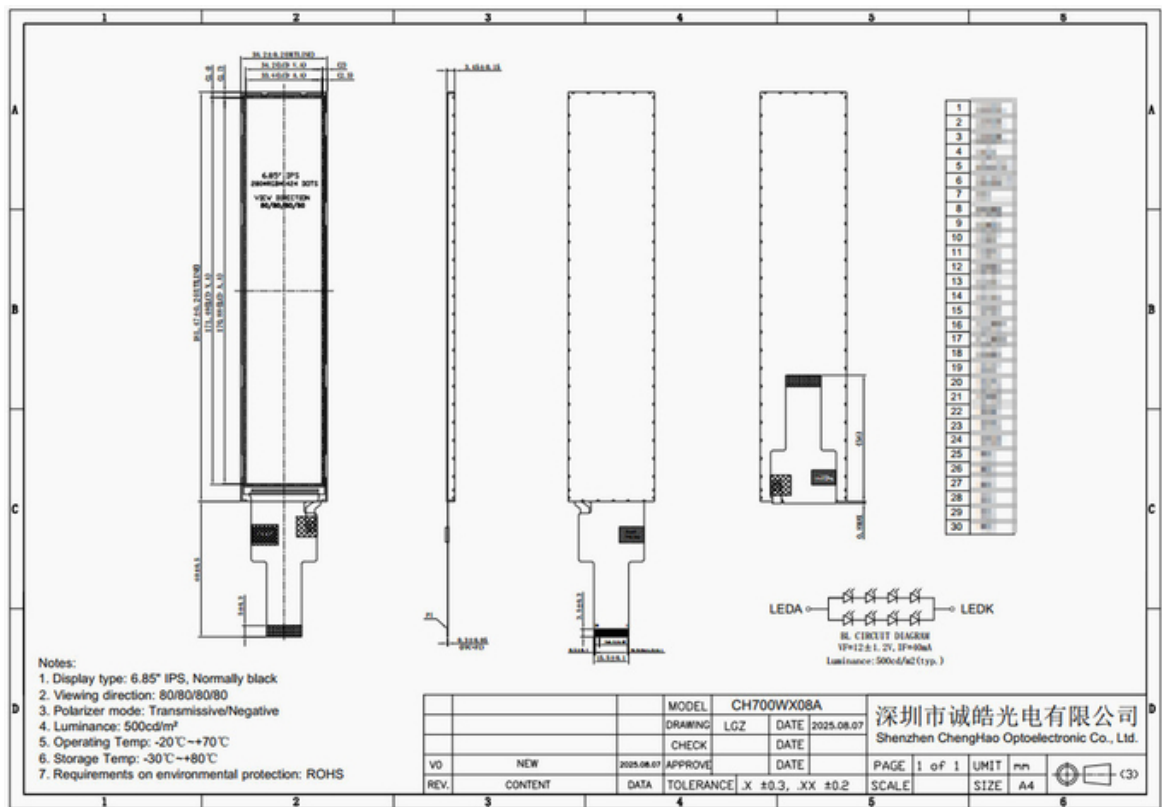
Features an impressive brightness level of 500 cd/m<sup>2</sup>, enabling clear and visible display content even in bright outdoor or high - ambient - light environments.

Adopts the IPS display technology with 80/80/80/80 viewing angles, ensuring that users can obtain consistent color and image quality from any viewing direction without color distortion or image fading.

Offers a wide operating temperature range of -20 ~ +70 and a storage temperature range of -30 ~ +80, making it adaptable to harsh working and storage conditions, including cold outdoor areas and high - temperature industrial sites.

Delivers 16 million color display capability, presenting rich and vivid color details, which is ideal for applications that demand high - quality color reproduction, such as digital signage and multimedia display devices.

Supports both sample provision and customization services, allowing customers to test the product's performance in advance and tailor the module to their specific design requirements, such as interface adjustments or appearance modifications.



Technical Parameters:

Module Size	38.2x181.47x3.45 Mm
Interface	MIPI
Active Area Size	33.6x170.88 Mm
Operating Temperature	-20 ~ +70
Resolution	280x1424 Dots
Storage Temperature	-30 ~ +80
Contrast	800:1
LCD Type	7" TFT
Display Mode	IPS/Transmissive/Normally Black
Viewing Area Size	34.2x171.48 Mm

Applications:

1. Industrial Control Field

In the industrial control field, the CH700WX08A module is an ideal choice for equipment operation interfaces and status monitoring displays. Its 7-inch long strip form factor perfectly fits the narrow installation spaces of industrial control panels, such as those on assembly line control cabinets, mechanical equipment operation consoles, and intelligent sensor monitoring terminals. With a wide operating temperature range of -20 ~ +70 , it can work stably in harsh industrial environments with large temperature fluctuations, like high-temperature workshops or cold storage auxiliary control systems. The 500 cd/m<sup>2</sup> high brightness ensures that operators can clearly read real-time data (such as production counts, pressure values, and speed parameters) even under the strong light of factory workshops, and the IPS technology with 80/80/80/80 viewing angles allows multiple staff members around the equipment to check the display content simultaneously without visual dead angles.



## 2. Automotive Electronics Field

For automotive electronics, this module is widely applicable to automotive instrument clusters and in-car control interfaces. The elongated display shape matches the layout of modern car dashboards, enabling it to display key driving information (such as speed, fuel level, and engine speed) in a concentrated manner while leaving space for other functional components. Its excellent high-temperature resistance ( $-20 \sim +70$  operating temperature) ensures stable performance even when the car is parked in direct sunlight or during long-term high-speed driving, avoiding display failures caused by high temperatures. Additionally, the integrated touch panel simplifies the operation of in-car functions, allowing drivers to adjust air conditioning, audio, and navigation settings through the touch screen without distracting from driving, enhancing the convenience and safety of in-car operations.

## 3. Smart Home and Digital Signage Field

In the smart home sector, the CH700WX08A is suitable for smart home control panels installed on walls or furniture surfaces. Its long strip design can be easily integrated into narrow spaces (such as beside door frames or on the edge of cabinet panels), serving as a centralized control terminal for home appliances (controlling lights, curtains, air conditioners, etc.). The 16 million color display capability presents rich and vivid interface icons and status indicators, making the operation interface more intuitive and user-friendly. In the digital signage field, it is used in small-sized, elongated digital signs, such as advertising displays in elevator doors, product information boards in retail store shelves, and menu boards in fast-food restaurants. The high brightness of  $500 \text{ cd/m}^2$  ensures that the displayed advertisements, product details, or menus remain clearly visible even in well-lit indoor environments, attracting the attention of passers-by and improving the communication effect of information.

### FAQ:

**Q: What is the lifespan of the backlight in the CH700WX08A module under normal operating conditions?** .....

A: Under normal operating conditions (operating temperature:  $-20 \sim +70$  ), the backlight of the CH700WX08A module has a typical lifespan of 50,000 hours. This lifespan may vary slightly depending on factors such as actual usage time, ambient temperature stability, and voltage stability.

**Q: What is the warranty period for the CH700WX08A module, and what situations are not covered by the warranty?**

A: The CH700WX08A module has a standard warranty period of 12 months from the date of delivery. The warranty does not cover damages caused by improper operation (such as incorrect voltage connection), unauthorized disassembly or modification of the module, natural disasters (such as floods, earthquakes), or long - term use beyond the specified operating temperature range.

**Q: If a customer receives a batch of CH700WX08A modules with appearance defects (such as scratches on the touch panel), what is the after - sales processing process?**

A: First, the customer needs to take photos or videos of the defective modules to confirm the defect situation, and send the relevant materials together with the order number and delivery note to our after - sales email within 7 days of receiving the goods. Our after - sales team will reply within 2 working days. After confirming the non - man - made defects, we will arrange for replacement of the defective modules, and the transportation costs for the replacement will be borne by our company.

**Q: Can the technical support team of Chenghao Optoelectronic provide on - site technical guidance for the CH700WX08A module if customers encounter difficulties in the assembly process?**

A: Generally, we first provide remote technical guidance through online communication tools (such as Zoom, WeChat) or phone calls. Our technical engineers will explain the assembly points and solutions to problems in detail. If the remote guidance cannot solve the problem, and the customer's order quantity reaches 500 pieces or more, we can arrange on - site technical guidance after confirming the time and location with the customer. The travel and accommodation expenses of the on - site engineers will be negotiated and confirmed separately according to the actual situation.



**Shenzhen ChengHao Optoelectronic Co., Ltd.**



+86 755-27806536



add@chenghaolcm.com



chenghaolcd.com

7th floor, building C5, Hengfeng Industrial City, Hangcheng street, Bao'an District, Shenzhen