

7" Color LCD Display Module with 1024x600 Resolution

Our Product Introduction

for more products please visit us on chenghaolcd.com

Basic Information

- Brand Name: Chenghao Optoelectronic
- Certification: CE、RoHS、FCC
- Model Number: CH700WS02A-CTA
- Minimum Order Quantity: 100 Pcs
- Packaging Details: All The Products Are Packed In Right Way To Keep It Safe. For Small Sizes Of Products We Use Tray + Carton, For Bigger Sizes We Use Foam Slot + Carton. We Also Design Packages According To Customers' Requirements
- Delivery Time: 3~7 Days
- Payment Terms: TT Or Others
- Supply Ability: 50000000 Pcs/month

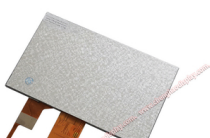


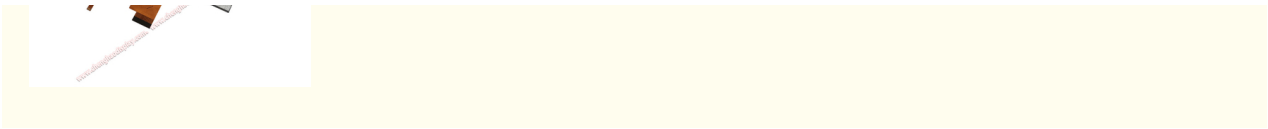
Product Specification

- Color: 16 M
- Contrast: 80/80/80/80
- Number Of Dots: 1024*3(RGB)*600
- Luminance: 300 Cd/m2
- Storage Temperature: -30 ~ +80
- Operating Temperature: -20 ~ +70
- Module Size: 164.9*100*5.287 Mm
- Display Mode: IPS/Transmissive/Normally Black
- Highlight: 7 inch LCD display module , 1024x600 resolution LCD module, color LCD display module



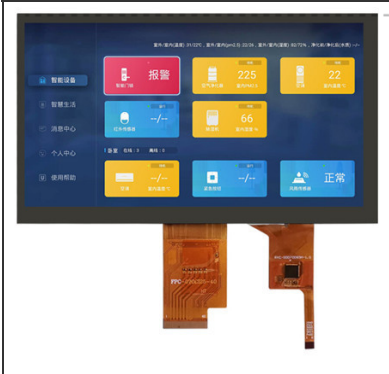
More Images





Product Description

Product Description:



The CH700WS02A-CTA is an advanced 7-inch TFT LCD display module designed for a wide range of applications, offering a perfect blend of performance and versatility. Manufactured by Chenghao Optoelectronics, the module is designed to meet the demanding requirements of modern display technology while ensuring easy integration into a wide range of devices.

With a resolution of 1024x600 pixels, the display module provides clear and sharp images for an enhanced user experience. IPS (In-Plane Switching) technology provides a wide viewing angle of 80 degrees in all directions, ensuring clear content from multiple angles. With a brightness of 300 cd/m², the CH700WS02A-CTA meets the needs of normal indoor use.

With compact dimensions of 164.9 mm x 100 mm x 5.28 mm, the module can be easily integrated into space-constrained devices such as handheld instruments and control panels. The 155.08 mm x 86.92 mm viewing area ensures that users can interact with the display comfortably.

The CH700WS02A-CTA is equipped with a capacitive touch panel that supports intuitive user interaction and enhances the overall functionality of the device it is integrated into. The touch panel operates from 2.8V to 3.3V and has a transmittance of over 87%, ensuring touch sensitivity without compromising display quality.

Designed to operate in a temperature range of -20 to +70 degrees Celsius, the module is rugged enough to handle a variety of environmental conditions and is suitable for a variety of applications in industries such as industrial control, medical equipment, smart home systems, and automotive displays. Combining advanced features and customization options, the CH700WS02A-CTA is a reliable solution for modern display needs.



Features:

Display Size: The CH700WS02A-CTA features a 7-inch display in a compact package for a wide range of applications.

High Resolution: The module offers a resolution of 1024x600 pixels, ensuring crisp, detailed visuals for an enhanced user experience.

IPS Technology: Using IPS (In-Plane Switching) technology, the display offers a wide viewing angle of 80 degrees in all directions, providing consistent image quality from multiple angles.

Brightness Level: The module has a brightness level of 300 cd/m², which is sufficient for normal use indoors or in a variety of low-light environments.

Color Depth: With 16 million colors, the CH700WS02A-CTA offers vivid, rich visuals, making it ideal for applications that require high-quality image reproduction.

Capacitive Touchscreen: The display features a capacitive touchscreen for intuitive touch interaction, enhancing user engagement and functionality.

Touchscreen specifications: The touchscreen operates in the voltage range of 2.8V to 3.3V, with a light transmittance of ≥87%, ensuring effective touch sensitivity while maintaining display clarity.

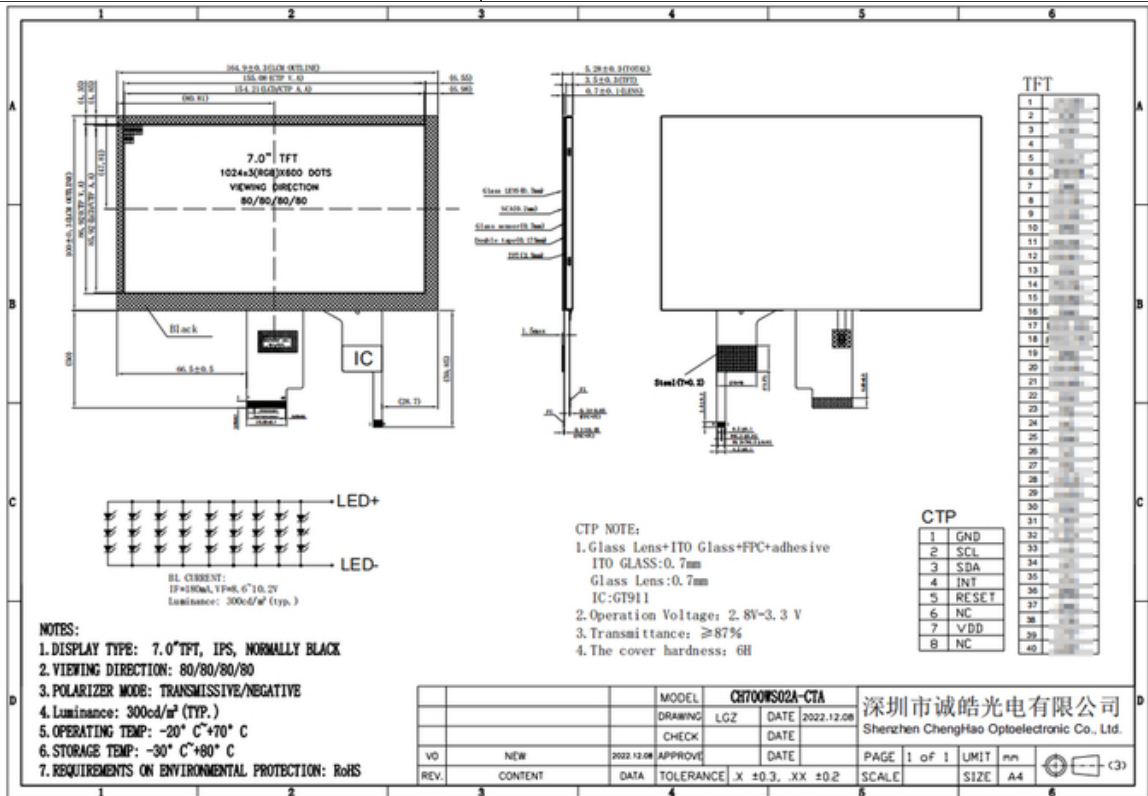
Durability: The touch glass cover has a hardness of 6H and is scratch-resistant, ensuring longevity in harsh environments.

Operating temperature range: The module can operate effectively in a temperature range of -20 to +70 degrees Celsius, making it suitable for a variety of industrial and outdoor applications.

Technical Parameters:

Viewing Area Size	155.08*86.92 mm
Color	16 M
Number of dots	1024*3(RGB)*600
Display Mode	IPS/Transmissive/Normally Black
Viewing Direction	80/80/80/80

Luminance	300 Cd/m2
Operating Temperature	-20 ~ +70
Storage Temperature	-30 ~ +80
Active Area Size	154.21*85.92 mm
Contrast	80/80/80/80



Applications:

The CH700WS02A-CTA display module is designed to be flexible and suitable for a variety of applications in different industries. Its powerful features and reliable performance enable it to work well in a variety of environments and meet the specific needs of users. One prominent application area for the CH700WS02A-CTA is industrial automation. The module's high resolution and high brightness make it ideal for control panels and monitoring systems where operators need to clearly view critical data and get real-time feedback from machines. Its ability to withstand a wide operating temperature range of -20 to +70 degrees Celsius ensures that it can operate effectively even in harsh industrial conditions.

In the medical field, the display module can be used in equipment such as diagnostic equipment, patient monitoring systems, and handheld medical devices. IPS technology provides medical professionals with consistent image quality from all angles, which is essential for accurate readings and assessments. The capacitive touch screen enhances the user interaction experience, allowing for quick and intuitive navigation of medical software.

The CH700WS02A-CTA is also well suited for smart home applications. It can be integrated into smart control panels that manage home automation systems such as lighting, security, and heating, ventilation, and air conditioning (HVAC). The module's touch capabilities allow users to seamlessly interact with smart devices, improving the overall user experience.

In the automotive technology sector, the display module can be used as an interface for vehicle dashboards and infotainment systems. Its high brightness and durability make it ideal for use in vehicles where visibility and reliability are critical, especially in varying lighting conditions.

In addition, the CH700WS02A-CTA can also be applied to IoT devices as a user interface for connected systems. Its customization options allow manufacturers to tailor the display to specific application needs, making it an important component in the rapidly evolving IoT sector.

All in all, the CH700WS02A-CTA's adaptability in these different areas highlights its importance as a comprehensive display solution that meets the evolving needs of modern technology.

Support and Services:

Chenghao Optoelectronics is committed to providing comprehensive support and services for the CH700WS02A-CTA display module, ensuring that customers get the help they need throughout the project lifecycle. One of our main services is to provide samples to potential buyers. This allows customers to evaluate the performance of the module and its compatibility with their application before purchasing in bulk.

In addition to sample support, Chenghao Optoelectronics also provides customization services to meet specific project needs. This includes modifying the FPC design, adjusting the backlight brightness, and defining the LCD interface according to customer needs. This flexibility is critical for manufacturers who want to integrate display modules into unique devices or systems.

In addition, the company also provides technical support throughout the integration process, including installation guidance, troubleshooting, and display module performance optimization. Customers can rely on the expertise of Chenghao's technical team to solve any challenges they may encounter and ensure a smooth project implementation.

Chenghao Optoelectronics also emphasizes its commitment to quality assurance. The CH700WS02A-CTA is rigorously tested and meets industry standards, and the company also provides reliable after-sales support. If customers encounter any problems after purchase, they can get help and solve the problem efficiently.

In addition, the company maintains an open communication channel with customers and encourages feedback and consultation. This

proactive approach helps Chenghao Optoelectronics continuously improve its products and services to ensure they meet customer expectations and keep up with industry developments.
In summary, the support and services provided by the CH700WS02A-CTA display module cover sample supply, customization options, technical support, quality assurance, and responsive customer service to create a successful user experience.

FAQ:

- Q: What is the brand name of the LCD Display Module? -----
- A: The brand name of the LCD Display Module is Chenghao Optoelectronic.
- Q: What is the model number of the LCD Display Module?
- A: The model number of the LCD Display Module is CH700WS02A-CTA.
- Q: What certifications does the LCD Display Module have?
- A: The LCD Display Module is certified with CE, RoHS, and FCC.
- Q: What is the minimum order quantity for the LCD Display Module?
- A: The minimum order quantity for the LCD Display Module is 100 pieces.
- Q: What are the packaging details for the LCD Display Module?
- A: All the products are packed in the right way to keep them safe. For small sizes of products, we use tray + carton, and for bigger sizes, we use foam slot + carton. We also design packages according to customers' requirements.



Shenzhen ChengHao Optoelectronic Co., Ltd.



+86 755-27806536



add@chenghaolcm.com



chenghaolcd.com

7th floor, building C5, Hengfeng Industrial City, Hangcheng street, Bao'an District, Shenzhen