



## 1024x600 Liquid Crystal Display Panel 300cd/m2 Luminance 7inch With Capacitive Touch

### Our Product Introduction

for more products please visit us on [chenghaolcd.com](http://chenghaolcd.com)

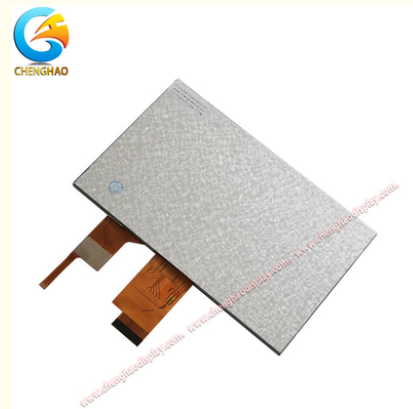
#### Basic Information

- Brand Name: Chenghao Optoelectronic
- Certification: CE、RoHS、FCC
- Model Number: CH700WS02A-CTA
- Minimum Order Quantity: 100 Pcs
- Packaging Details: All The Products Are Packed In Right Way To Keep It Safe. For Small Sizes Of Products We Use Tray + Carton, For Bigger Sizes We Use Foam Slot + Carton. We Also Design Packages According To Customers' Requirements
- Delivery Time: 3~7 Days
- Payment Terms: TT Or Others
- Supply Ability: 50000000 Pcs/month



#### Product Specification

- Luminance: 300 Cd/m2
- Display Mode: IPS/Transmissive/Normally Black
- Contrast: 80/80/80/80
- Viewing Direction: 80/80/80/80
- Color: 16 M
- Storage Temperature: -30 ~ +80
- Module Size: 164.9\*100\*5.287 Mm
- Viewing Area Size: 155.08\*86.92 Mm
- Highlight: 7inch LCD display panel,  
1024x600 capacitive touch screen,  
300cd/m2 luminance LCD module





#### More Images





## Product Description

### Product Description:

<p>The CH700WS02A-CTA is a high-end 7-inch TFT LCD display module designed to deliver superior performance for a wide range of applications. Manufactured by Chenghao Optoelectronics, the module is designed to provide high-quality visuals and user-friendly interactive experiences, making it an ideal choice for industries such as industrial automation, medical devices, and consumer electronics.</p> <p>The heart of the CH700WS02A-CTA lies in its high resolution of up to 1024x600 pixels, ensuring crisp images and text. Such a high pixel density allows for detailed graphics and crisp text, enhancing the overall user experience. The display uses IPS (In-Plane Switching) technology, which provides a wide viewing angle of 80 degrees in all directions, ensuring that the screen is clearly visible and colorful from all angles.</p> <p>The module has a brightness of 300 cd/m<sup>2</sup>, which can meet the normal use requirements in most indoor or low-light environment conditions. In addition, the CH700WS02A-CTA supports a color depth of 16 million colors, providing vivid and lifelike visuals to attract users.</p>	
	<p>The CH700WS02A-CTA is equipped with a capacitive touch panel for intuitive and responsive user interaction. The touch panel operates in a voltage range of 2.8V to 3.3V, making it compatible with a wide range of electronic devices. The touch panel has a high light transmittance of <math>\geq 87\%</math>, which not only improves visibility but also ensures smooth and accurate touch response.</p> <p>The CH700WS02A-CTA has a compact design with an overall size of 164.9mm x 100mm x 5.28mm, making it easy to integrate into a variety of devices without taking up too much space. This compactness is particularly beneficial for space-constrained applications, such as handheld devices or embedded systems.</p> <p>In addition, the CH700WS02A-CTA can withstand a wide operating temperature range of -20 to +70 degrees Celsius. This durability ensures reliable operation in a variety of environmental conditions, making it ideal for industrial environments, medical devices, and smart home applications.</p>

### Features:

**High Resolution:** The CH700WS02A-CTA has a resolution of up to 1024x600 pixels, ensuring that images and text are displayed with excellent clarity and detail for a wide range of applications.

**Wide Viewing Angle:** The display module uses IPS (In-Plane Switching) technology to provide a wide viewing angle of 80 degrees in all directions. This feature allows multiple users to view the screen simultaneously without color distortion or brightness loss.

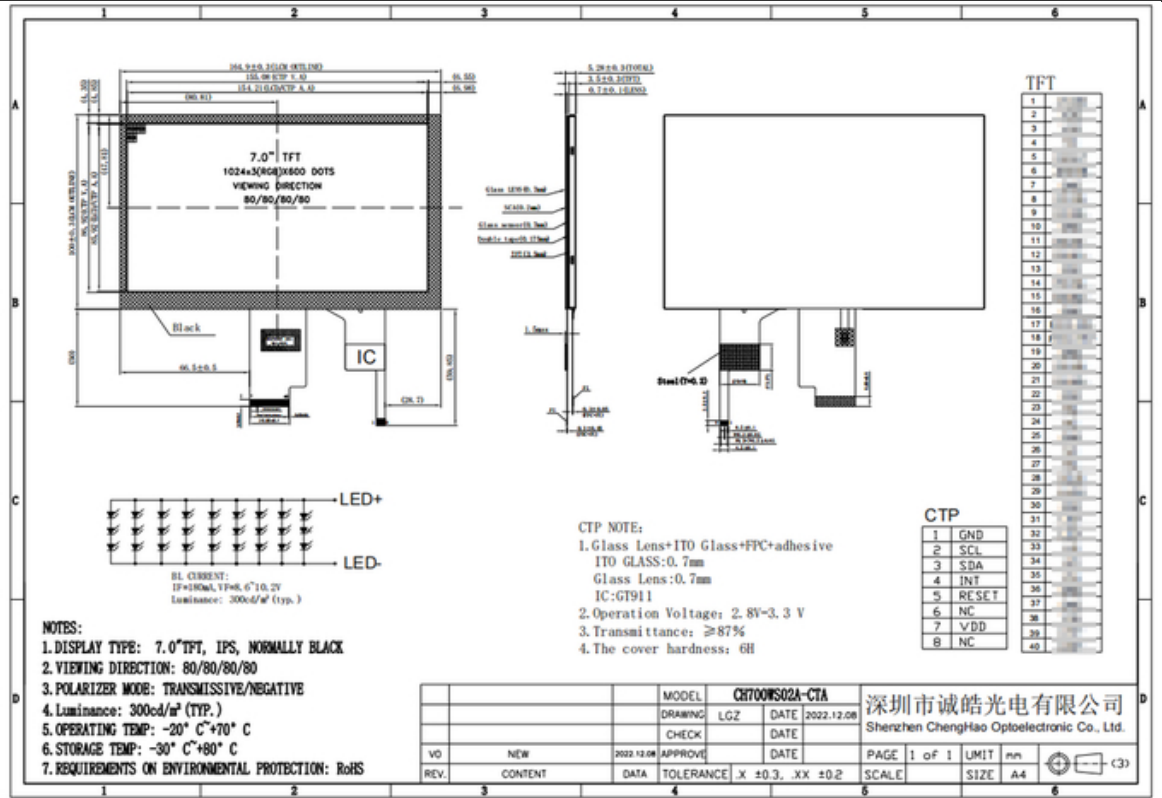
**Capacitive Touch Capability:** The module is equipped with a capacitive touch panel for intuitive user interaction. The touch panel is responsive and supports multi-touch functionality, improving the overall user experience.

**Brightness:** The CH700WS02A-CTA has a brightness of 300 cd/m<sup>2</sup>, which meets the needs of use in most indoor environments.

**Durable Operating Range:** Designed to operate effectively in a temperature range of -20 to +70 degrees Celsius, the display module can withstand a variety of environmental conditions and is suitable for industrial and outdoor applications.

### Technical Parameters:

Contrast	80/80/80/80
Luminance	300 Cd/m2
Module Size	164.9*100*5.287 Mm
Active Area Size	154.21*85.92 Mm
Display Mode	IPS/Transmissive/Normally Black
Viewing Area Size	155.08*86.92 Mm
Display Type	7" TFT + CTP
Viewing Direction	80/80/80/80
Number of dots	1024*3(RGB)*600
Operating Temperature	-20 ~ +70



## Applications:

**Industrial Control:** One of the main applications of the CH700WS02A-CTA is in industrial control systems. Its high resolution and wide viewing angle make it ideal for operator interfaces in manufacturing and automation environments. Operators can clearly monitor processes and control machines, which can improve production efficiency and safety in industrial environments.

**Medical Devices:** The CH700WS02A-CTA brings significant advantages to the medical field because it can be integrated into a variety of medical devices such as patient monitors, diagnostic equipment, and portable medical devices. Its excellent brightness and clarity ensure that critical data is easy to read, which is essential in precision-focused medical environments.

**Smart Home Devices:** With the rise of smart home technology, the CH700WS02A-CTA is increasingly used in smart home devices, including control panels for home automation systems. Its capacitive touch function allows users to intuitively interact with smart home systems and easily control lighting, security, and temperature settings.

**Consumer Electronics:** The module is also suitable for consumer electronics such as handheld gaming devices, tablets, and portable media players. Vivid color reproduction and sensitive touch capabilities enhance the user experience, making it a popular choice for manufacturers of personal electronic devices.

**Automotive applications:** The automotive industry uses the CH700WS02A-CTA for in-vehicle applications such as infotainment systems and instrument cluster displays. The module is able to operate over a wide temperature range, ensuring reliability in a variety of driving conditions, while its high brightness makes it clearly visible even in direct sunlight.

**Internet of Things (IoT):** With the proliferation of IoT devices, the CH700WS02A-CTA is increasingly integrated into various IoT applications. Its compact design and customizable features make it ideal for smart sensors, home appliances, and connected devices that require user interfaces for interaction and data display.

**Instrumentation:** The CH700WS02A-CTA is also suitable for instrumentation applications that require precise data visualization. It can be used in devices such as digital meters, environmental monitoring systems, and scientific instruments to provide users with clear and accurate readings.

All in all, the CH700WS02A-CTA display module is a highly adaptable solution that can serve multiple industries, including industrial control, medical devices, smart home devices, consumer electronics, automotive applications, IoT, and instrumentation. Its combination of

high resolution, touch functionality, and durability makes it an ideal choice for any application that requires a reliable, high-quality display solution.

## Support and Services:

Chenghao Optoelectronics is committed to providing comprehensive support and services for the CH700WS02A-CTA display module, ensuring that customers get the help they need throughout the product lifecycle. Our dedication to customer satisfaction is reflected in several key areas of support.

First, pre-sales consultation is an important part of the service. Chenghao provides potential customers with detailed information about the CH700WS02A-CTA, including its specifications, features, and potential applications. This helps customers make informed decisions based on their needs. In addition, customers can request samples for evaluation to assess the module's performance and its compatibility with their system before placing a bulk order.

After the customer purchases, Chenghao Optoelectronics will provide strong technical support to assist customers in integrating the CH700WS02A-CTA into their applications. This support includes installation, configuration, and troubleshooting guidance. The technical team is always ready to answer any questions and ensure that users can effectively utilize the display module's features.

In terms of quality assurance, the CH700WS02A-CTA is rigorously tested before shipment and meets industry standards. This quality commitment ensures that customers receive a product with stable and reliable performance. If any issues arise after purchase, Chenghao offers a comprehensive after-sales service framework that can quickly resolve issues. This includes a warranty period during which customers can seek replacement or repair of defective products.

In addition, Chenghao Optoelectronics values customer feedback as an important part of its service strategy. The company encourages customers to share their usage experiences and suggestions, which helps drive continuous improvement in product offerings and customer service. This open communication channel promotes a strong relationship between the company and its customers.

Finally, the company also provides customization services for the CH700WS02A-CTA, allowing customers to customize the display module to their specific needs. This includes modifying the FPC design, backlight brightness, and touch screen specifications to ensure that the product meets the unique needs of various applications.

## FAQ:

**Q: What is the brand name of this LCD Display Module?**

A: The brand name of this LCD Display Module is Chenghao Optoelectronic.

**Q: What is the model number of this LCD Display Module?**

A: The model number of this LCD Display Module is CH700WS02A-CTA.

**Q: What certifications does this LCD Display Module have?**

A: This LCD Display Module is certified with CE, RoHS, and FCC.

**Q: What is the minimum order quantity for this LCD Display Module?**

A: The minimum order quantity for this LCD Display Module is 100 pieces.

**Q: What are the delivery time and payment terms for this LCD Display Module?**

A: The delivery time is 3~7 days, and the payment terms accepted are TT or others.



**Shenzhen ChengHao Optoelectronic Co., Ltd.**



+86 755-27806536



add@chenghaolcm.com



chenghaolcd.com

7th floor, building C5, Hengfeng Industrial City, Hangcheng street, Bao'an District, Shenzhen