

7 Inch IPS Lcd Display 40 Pins 1024*600 With 80/80/80/80 Free Viewing Direction

Our Product Introduction

for more products please visit us on chenghaolcd.com

Basic Information

- Brand Name: Chenghao Optoelectronic
- Certification: CE、RoHS、FCC
- Model Number: CH700WS02A-CTA
- Minimum Order Quantity: 100 Pcs
- Packaging Details: All The Products Are Packed In Right Way To Keep It Safe. For Small Sizes Of Products We Use Tray + Carton, For Bigger Sizes We Use Foam Slot + Carton. We Also Design Packages According To Customers' Requirements
- Delivery Time: 3~7 Days
- Payment Terms: TT Or Others
- Supply Ability: 50000000 Pcs/month

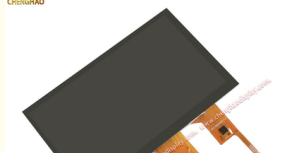


Product Specification

- Number Of Dots: 1024*3(RGB)*600
- Luminance: 300 Cd/m2
- Display Mode: IPS/Transmissive/Normally Black
- Active Area Size: 154.21*85.92 Mm
- Storage Temperature: -30 ~ +80
- Module Size: 164.9*100*5.287 Mm
- Viewing Area Size: 155.08*86.92 Mm
- Contrast: 80/80/80/80
- Highlight: 7 inch IPS LCD display , 40 pin LCD display , 1024x600 resolution LCD




More Images






Product Description

Product Description:

	<p>The CH700WS02A-CTA is an advanced 7-inch TFT LCD display module designed by Chenghao Optoelectronics and tailored to meet the needs of a wide range of applications across a wide range of industries.</p> <p>A highlight of the CH700WS02A-CTA is its high resolution of up to 1024x600 pixels. Such a high pixel density ensures excellent clarity of images and text, resulting in detailed graphics and crisp visuals. Whether used in industrial control panels or consumer electronics, this display provides a clear and sharp viewing experience to enhance user engagement.</p> <p>The module uses IPS (In-Plane Switching) technology to provide a wide viewing angle of 80 degrees in all directions. This feature is critical for applications that require multiple users to view the screen simultaneously without color distortion or brightness loss.</p>
---	--

In addition to its visual capabilities, the CH700WS02A-CTA is equipped with a capacitive touch panel for intuitive interaction. The touch panel supports multi-touch functionality, allowing users to easily navigate applications and menus. This response speed is particularly important in applications that require fast and accurate input, such as medical devices and smart home systems.

	<p>The CH700WS02A-CTA has a standard backlight brightness of 300 cd/m², which can meet the normal use needs of users in most low-light conditions. For example, the display can be clearly displayed in low-light scenarios such as indoors or in the driving cabin of a car, and the readability is extremely high.</p> <p>The CH700WS02A-CTA is designed with full consideration of durability and can operate effectively in a wide temperature range of -20 to +70 degrees Celsius. This ruggedness ensures that the display can operate reliably in a variety of environments, from industrial environments to outdoor installations. This temperature adaptability is critical for applications that may expose the device to extreme conditions.</p> <p>The overall size of the CH700WS02A-CTA is compact, only 164.9 mm x 100 mm x 5.28 mm. This slim form factor can be easily integrated into a variety of devices, making it an ideal choice for space-constrained applications such as handheld devices and embedded systems.</p>
---	--

Features:

High Resolution: With a resolution of 1024x600 pixels, the CH700WS02A-CTA provides crisp, detailed images for a wide range of applications.

IPS Technology: The display module uses IPS (In-Plane Switching) technology, which allows for a wide viewing angle of 80 degrees in all directions, ensuring consistent color and brightness from different angles.

Capacitive Touchscreen: The module is equipped with a capacitive touchscreen and supports multi-touch functionality for smooth and intuitive user interaction, which is essential for modern applications.

Brightness Level: With a brightness level of 300 cd/m², the CH700WS02A-CTA is suitable for use in low-light ambient conditions indoors.

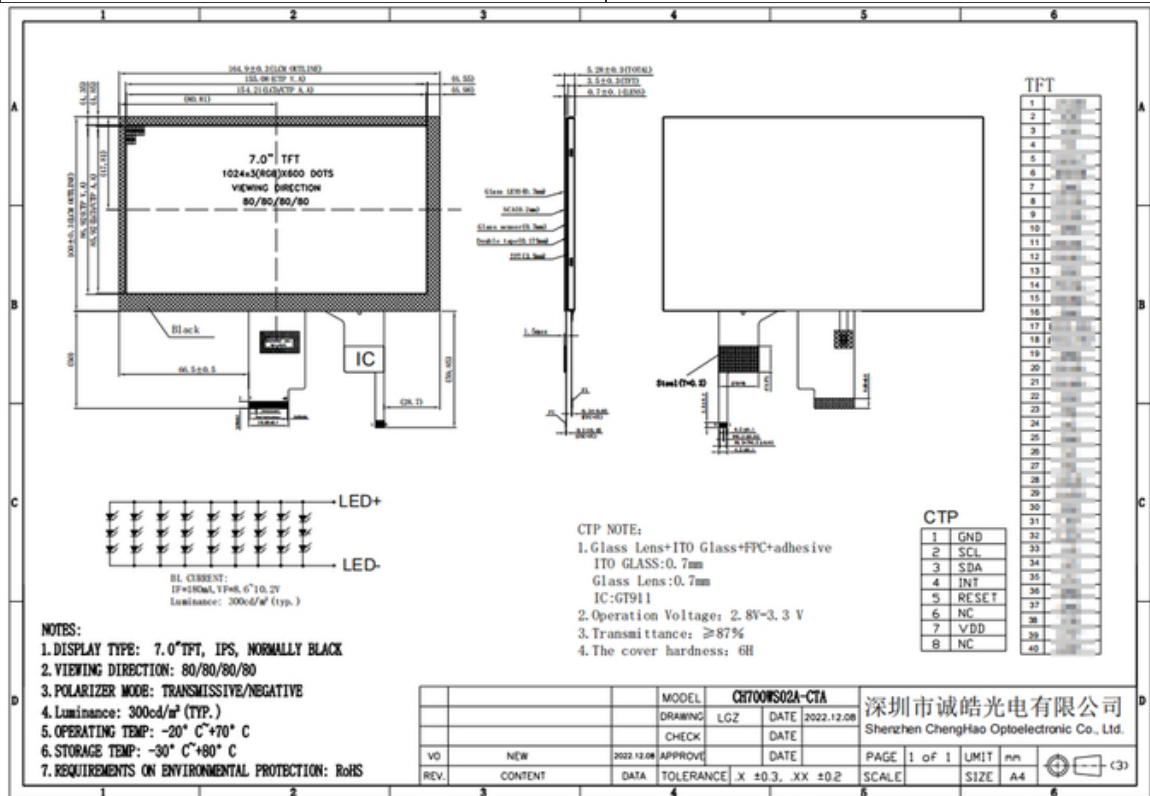
Wide Operating Temperature Range: The display can operate effectively in a temperature range of -20 to +70 degrees Celsius, ensuring reliable operation in a wide range of environmental conditions.

Compact Design: With an overall size of 164.9mm x 100mm x 5.28mm, the CH700WS02A-CTA can be easily integrated into space-constrained devices and applications.

Color Depth: The module supports 16 million color depths, providing vivid and lifelike visuals to enhance the user experience in a variety of applications.

Technical Parameters:

Viewing Area Size	155.08*86.92 Mm
Operating Temperature	-20 ~ +70
Viewing Direction	80/80/80/80
Storage Temperature	-30 ~ +80
Active Area Size	154.21*85.92 Mm
Color	16 M
Display Type	7" TFT + CTP
Luminance	300 Cd/m2
Module Size	164.9*100*5.287 Mm
Number of dots	1024*3(RGB)*600



Support and Services:

Chenghao Optoelectronics is committed to providing excellent support and service for the CH700WS02A-CTA display module, ensuring that customers receive comprehensive assistance throughout the product use process.

First, the company provides pre-sales support, where potential buyers can view detailed product specifications, which helps customers make informed decisions based on their needs. In addition, Chenghao also provides customers with the option to request samples for testing, allowing them to evaluate the performance of the display and its compatibility with their system before placing an order.

After the purchase, customers can enjoy technical support to guide them in integrating the CH700WS02A-CTA into their application. This includes technical support such as installation and testing, ensuring that any problems encountered are solved quickly and effectively. The technical support team is always ready to answer questions and provide solutions to ensure a smooth user experience.

Chenghao Optoelectronics attaches great importance to quality assurance and fully tests the CH700WS02A-CTA before it is delivered to customers. A strict quality control process ensures that each module meets high performance and reliability standards. If any problems arise after purchase, the company provides comprehensive after-sales service, including warranty for defective products, and repair or replacement services as needed.

In addition, Chenghao values customer feedback as an important part of its service strategy. The company actively encourages customers to share their usage experience and suggestions, which is essential to driving product improvements and improving service quality.

Finally, customization options are a major advantage Chenghao offers. Customers can customize the CH700WS02A-CTA to their specific needs, such as modifying the touch screen or backlight specifications. This flexibility enables customers to create a display solution that perfectly fits their unique application.

FAQ:

Q: What is the brand name of the LCD Display Module?

A: The brand name is Chenghao Optoelectronic.

Q: What is the model number of the LCD Display Module?

A: The model number is CH700WS02A-CTA.

Q: What certifications does the LCD Display Module have?

A: The LCD Display Module is certified with CE, RoHS, and FCC.

Q: What is the minimum order quantity for the LCD Display Module?

A: The minimum order quantity is 100 pieces.

Q: What are the packaging details for the LCD Display Module?

A: All the products are packed in the right way to keep them safe. For small sizes, we use tray + carton, and for bigger sizes, we use foam slot + carton. We also design packages according to customers' requirements.



Shenzhen ChengHao Optoelectronic Co., Ltd.



+86 755-27806536



add@chenghaolcm.com



chenghaolcd.com

7th floor, building C5, Hengfeng Industrial City, Hangcheng street, Bao'an District, Shenzhen