



All In Black Touch Screen LCD Display 4 Inch 480*480 Square Tft Screen For Industrial Applications

Our Product Introduction

for more products please visit us on chenghaolcd.com

Basic Information

- Brand Name: Chenghao Optoelectronic
- Certification: RoHS CE FCC
- Model Number: CH400WV23A-CTBA
- Minimum Order Quantity: 100 Pcs
- Packaging Details: All The Products Are Packed In Right Way To Keep It Safe. For Small Sizes Of Products We Use Tray + Carton, For Bigger Sizes We Use Foam Slot + Carton. We Also Design Packages According To Customers' Requirements
- Delivery Time: 3~7 Days
- Payment Terms: TT
- Supply Ability: 300K Pcs/month



Product Specification

- Visible Area Size: 72.06 * 70.38 Mm
- Viewing Direction: 80/80/80/80
- Display Mode: IPS/Transmissive/Normally Black
- Storage Temperature: -30 ~ +80 °C
- Touch Type: Capacitive
- Number Of Dots: 480x480
- Active Area Size: 71.86 * 70.18 Mm
- Touch Interface: IIC
- Highlight: 4 Inch Touch Screen LCD Display , All In Black Touch Screen LCD, 480*480 Square Tft Screen



More Images



Product Description

Product Description:

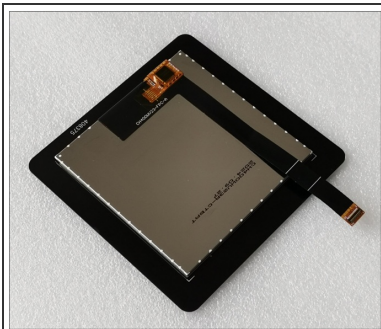
The CH400WV23A-CTBA is a state-of-the-art 4-inch TFT LCD display module designed to deliver exceptional visual performance and versatility for a wide range of applications. With its compact dimensions of 96 x 96 x 4.04 mm, this module is engineered for seamless integration into devices where space is a constraint, making it an ideal choice for both consumer electronics and industrial applications.

At the heart of the CH400WV23A-CTBA is its impressive resolution of 480 x 480 pixels, which provides sharp and vibrant images. This high pixel density ensures that both text and graphics are displayed with clarity, making it suitable for applications that require precise visual representation, such as medical devices, industrial control panels, and interactive kiosks. The module's ability to render detailed visuals enhances user experience and functionality across various use cases.

One of the key features of the CH400WV23A-CTBA is its use of IPS (In-Plane Switching) technology, which allows for wide viewing angles of 80 degrees in all directions. This characteristic is particularly beneficial in applications where multiple users may need to view the display from different angles, such as automotive dashboards and smart home devices. The IPS technology ensures that color accuracy and brightness remain consistent, regardless of the viewer's position.



The display module is equipped with a capacitive touch panel, providing a responsive and intuitive user interface. This touch technology enhances user interaction, making it ideal for applications that require frequent user input, such as point-of-sale systems and smart home control panels. The touch panel operates within a voltage range of 2.8V to 3.3V, ensuring compatibility with various electronic systems.



In terms of durability, the CH400WV23A-CTBA is designed to withstand challenging environmental conditions. It operates effectively within a temperature range of -20 to +70 degrees Celsius, making it suitable for both indoor and outdoor applications. This wide operating temperature range ensures reliable performance in diverse environments, from industrial settings to consumer electronics.

Another notable feature of the CH400WV23A-CTBA is its All in Black touch glass cover, which not only enhances the aesthetic appeal of the module but also minimizes reflections and glare. This design choice is particularly advantageous in bright environments, improving visibility and user interaction. The glass cover has a hardness rating of 6H, providing excellent resistance to scratches and ensuring longevity, which is essential for devices that may be subjected to frequent handling.

Chenghao Optoelectronic is committed to quality and innovation, adhering to strict quality management standards to ensure that each module meets high performance and reliability benchmarks. The CH400WV23A-CTBA is not only a versatile display solution but also a testament to the company's dedication to providing high-quality products that meet the evolving needs of various industries.

Features:

Compact Dimensions: The CH400WV23A-CTBA features a compact size of 96 x 96 x 4.04 mm, making it ideal for integration into space-constrained devices such as handheld gadgets and compact industrial equipment.

High Pixel Density: With a resolution of 480 x 480 pixels, this display module delivers sharp and detailed visuals, ensuring that both text and graphics are rendered clearly. This high pixel density is particularly beneficial for applications requiring precise visual feedback, such as medical devices and control interfaces.

IPS Technology for Enhanced Viewing Angles: The module employs IPS (In-Plane Switching) technology, which allows for wide viewing angles of 80 degrees. This feature ensures that the display maintains consistent color and brightness from various angles, making it suitable for multi-user environments like automotive dashboards and public information displays.

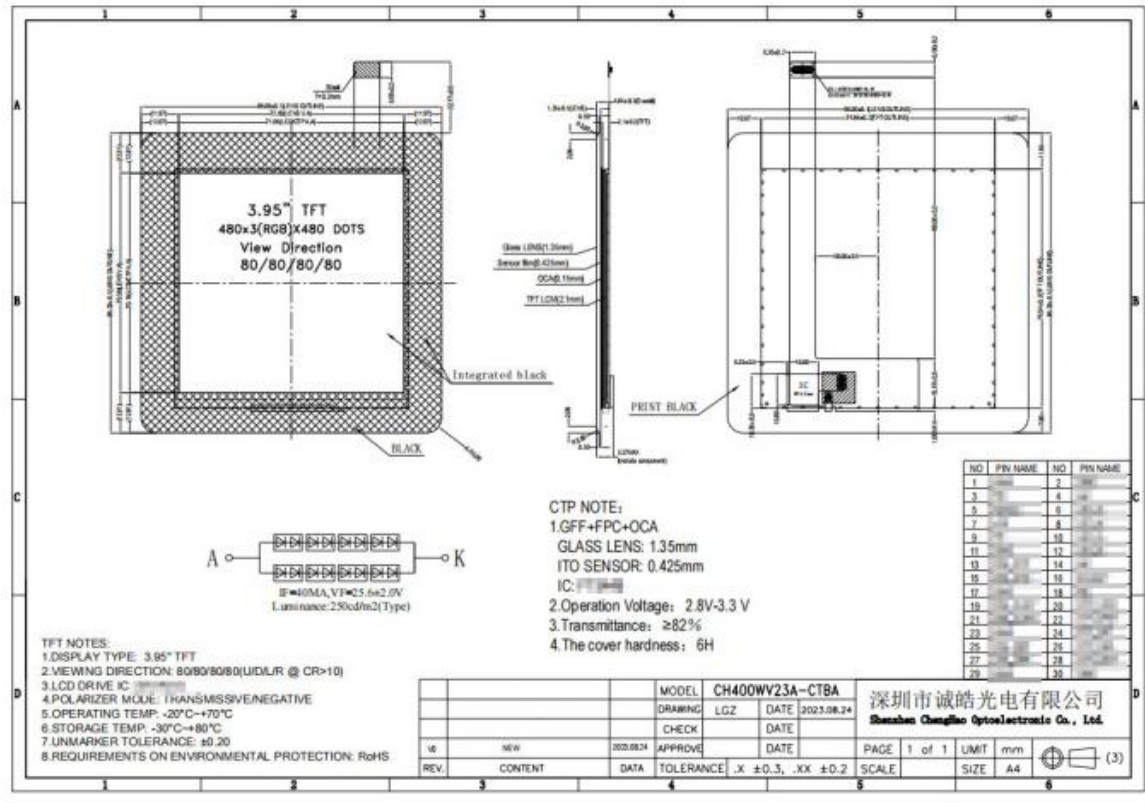
Responsive Capacitive Touch Panel: The CH400WV23A-CTBA is equipped with a capacitive touch panel that provides a smooth and intuitive user interface. This touch technology enhances user interaction, making it ideal for applications such as kiosks and smart home devices where quick and accurate touch response is essential.

Wide Operating Temperature Range: Designed to operate effectively in a temperature range of -20 to +70 degrees Celsius, this module is suitable for diverse environmental conditions. This durability makes it an excellent choice for outdoor applications and industrial settings where temperature fluctuations are common.

Durable All in Black Touch Glass Cover: The module features an All in Black touch glass cover that not only enhances its aesthetic appeal but also minimizes reflections and glare. This design improves visibility in bright environments, making it ideal for applications where the display may be exposed to direct sunlight.

Technical Parameters:

Number of dots	480x480
Module Size	96 * 96 * 4.04 mm
Touch Interface	IIC
Viewing Direction	80/80/80/80
Storage Temperature	-30 ~ +80 °C
Operating Temperature	-20 ~ +70 °C
Touch Type	Capacitive
Display Mode	IPS/Transmissive/Normally Black
Lcd Interface	MIPI
Active Area Size	71.86 * 70.18 mm



Customization:

The CH400WV23A-CTBA display module offers a wide range of customization options to meet the diverse needs of clients across various industries. One of the primary customization features is the **FPC (Flexible Printed Circuit) design**, which can be tailored to fit specific device configurations. This flexibility allows manufacturers to integrate the module seamlessly into their products, ensuring optimal performance and functionality.

Clients can also specify different **backlight brightness levels** to suit their operational environments. For instance, applications requiring high visibility in bright outdoor conditions can benefit from increased brightness settings, while indoor applications may opt for standard brightness levels to enhance user comfort.

Additionally, the **interface type** of the module can be customized. While the standard configuration uses a MIPI interface, clients can request alternatives such as SPI or RGB to ensure compatibility with their existing systems. This adaptability is crucial for industries that require specific communication protocols for their devices.

The **touch panel technology** is another area where customization is available. Clients can choose between capacitive and resistive touch solutions based on their application needs. Capacitive touch panels are ideal for interactive displays, while resistive touch panels may be preferred in environments where users need to operate the device with gloves.

Furthermore, the **appearance of the touch glass cover** can be customized, including options for thickness, finish, and even branding elements. This allows clients to enhance the visual appeal of their products while maintaining durability.

Chenghao Optoelectronic is committed to providing tailored solutions, ensuring that each CH400WV23A-CTBA module meets the specific requirements of its clients, thus enhancing the overall user experience in various applications

Support and Services:

Chenghao Optoelectronic is dedicated to providing exceptional support and services for the CH400WV23A-CTBA display module, ensuring that customers receive comprehensive assistance throughout their experience. From initial inquiries to post-purchase support, our team is committed to delivering a seamless service.

Pre-Sales Consultation: Our knowledgeable sales team is available to assist clients in selecting the right display module for their specific applications. We offer detailed product information and technical specifications, helping customers make informed decisions that align with their project requirements.

Sample Availability: To facilitate the decision-making process, we provide sample units of the CH400WV23A-CTBA. This allows potential customers to evaluate the module's performance and compatibility with their systems before placing a bulk order. Testing samples in real-world applications helps ensure that the product meets their expectations.

Customization Support: Understanding that each application may have unique requirements, we offer extensive customization options. Our technical team works closely with clients to modify aspects such as FPC design, backlight brightness, and touch panel technology, ensuring that the final product aligns perfectly with their needs.

Technical Assistance: After purchase, our dedicated support team is available to address any technical queries or issues that may arise during installation or operation. We provide troubleshooting guidance and solutions to ensure that clients can maximize the performance of their display modules.

Quality Assurance: Each CH400WV23A-CTBA module undergoes rigorous quality control testing before shipment. This commitment to quality ensures that our clients receive reliable and high-performing products.

In summary, Chenghao Optoelectronic's comprehensive support and services for the CH400WV23A-CTBA display module reflect our dedication to customer satisfaction and product excellence.

FAQ:

Q: What is the brand name of this Small LCD Touch Screen product?

A: The brand name is Chenghao Optoelectronic.

Q: What is the model number of this Small LCD Touch Screen?

A: The model number is CH400WV23A-CTBA.

Q: What certifications does this Small LCD Touch Screen have?

A: It is certified with RoHS, CE, and FCC.

Q: What is the minimum order quantity for this Small LCD Touch Screen?

A: The minimum order quantity is 100 pieces.

Q: What are the packaging details for this Small LCD Touch Screen?

A: All the products are packed in the right way to keep them safe. For small sizes, we use tray + carton, and for bigger sizes, we use foam slot + carton. We also design packages according to customers' requirements.



Shenzhen ChengHao Optoelectronic Co., Ltd.



+86 755-27806536



add@chenghaolcm.com



chenghaolcd.com

7th floor, building C5, Hengfeng Industrial City, Hangcheng street, Bao'an District, Shenzhen