

4 Inch Small Touch Screen Display IPS Free Viewing Direction With Pcap Touch

Our Product Introduction

for more products please visit us on chenghaolcd.com

Basic Information

- Brand Name: Chenghao Optoelectronic
- Certification: RoHS CE FCC
- Model Number: CH400WV23A-CTBA
- Minimum Order Quantity: 100 Pcs
- Packaging Details: All The Products Are Packed In Right Way To Keep It Safe. For Small Sizes Of Products We Use Tray + Carton, For Bigger Sizes We Use Foam Slot + Carton. We Also Design Packages According To Customers' Requirements
- Delivery Time: 3~7 Days
- Payment Terms: TT
- Supply Ability: 300K Pcs/month



Product Specification

- Visible Area Size: 72.06 * 70.38 Mm
- Number Of Dots: 480x480
- Viewing Direction: 80/80/80/80
- Storage Temperature: -30 ~ +80 °C
- Lcd Interface: MIPI
- Touch Type: Capacitive
- Module Size: 96 * 96 * 4.04 Mm
- Active Area Size: 71.86 * 70.18 Mm
- Highlight: 4 Inch Small Touch Screen Display , Free Viewing Direction Small Touch Screen , Pcap Small Touch Screen Display



More Images

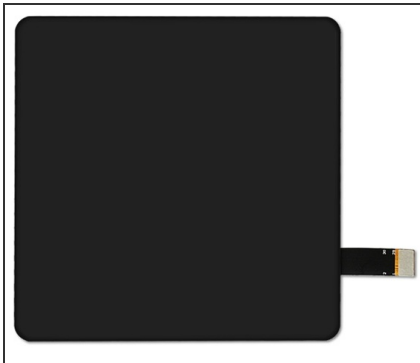




Product Description

Product Description:

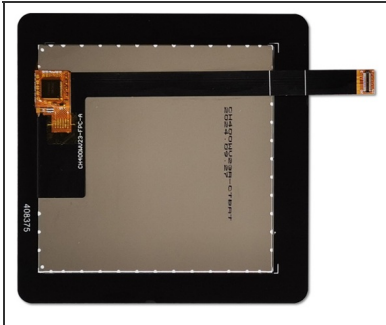
The CH400WV23A-CTBA is a high-performance 4-inch TFT LCD display module designed to meet the diverse needs of a wide range of applications across a wide range of industries. With a compact size of only 96 x 96 x 4.04 mm, the module is easy to integrate into space-constrained devices and is ideal for consumer electronics and industrial applications.



With a resolution of up to 480 x 480 pixels, the CH400WV23A-CTBA provides crisp and clear visuals, ensuring that images and text are clearly displayed. This high resolution is particularly suitable for applications that require detailed graphics, such as medical devices and industrial control panels, where precise information is essential for effective operation.

A highlight of the module is the use of IPS (In-Plane Switching) technology, which provides a wide viewing angle of 80 degrees. This feature allows users to view the display from different angles without noticeable color distortion, making it ideal for automotive dashboards and smart home devices, which may require multiple users to interact with the display at the same time.

The CH400WV23A-CTBA is equipped with a capacitive touch panel, providing a responsive and intuitive user interface. This feature enhances the user interaction experience, making it ideal for applications such as portable consumer electronics devices and interactive displays. The touch panel can operate efficiently in a voltage range of 2.8V to 3.3V, ensuring compatibility with a wide range of electronic systems.



In terms of durability, the module is designed to withstand harsh environments. It can operate effectively in a temperature range of -20 to +70 degrees Celsius, ensuring reliable operation in both indoor and outdoor environments. Such a wide operating temperature range is particularly beneficial for industrial applications where the equipment is exposed to various climate conditions.

In addition, the CH400WV23A-CTBA uses an all-black touch glass cover, which not only improves aesthetics, but also minimizes reflections and improves visibility in bright environments. The glass cover has a hardness rating of 6H and has excellent scratch resistance to ensure long-term durability.

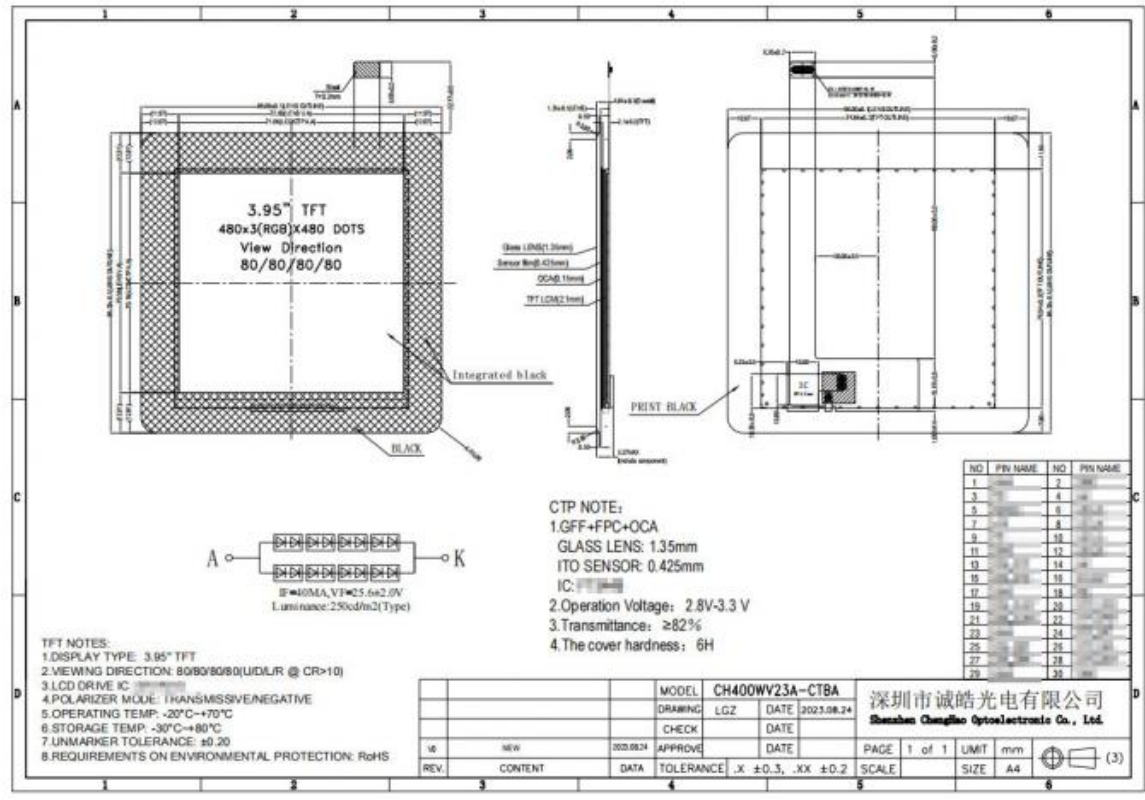
In summary, the CH400WV23A-CTBA display module combines advanced technology with strong design features, making it a versatile solution for a wide range of applications from industrial control systems to consumer electronics.

Features:

- (1) Compact Size:** The CH400WV23A-CTBA features a compact design with dimensions of 96 x 96 x 4.04 mm, making it suitable for integration into devices with limited space, such as handheld devices and compact industrial equipment.
- (2) High Resolution:** With a resolution of 480 x 480 pixels, this display module provides clear and detailed images, making it ideal for applications that require precise visual representation, such as medical devices and control panels.
- (3) IPS Technology:** The module utilizes IPS (In-Plane Switching) technology, which allows for wide viewing angles of 80 degrees. This feature ensures that the display maintains consistent color and brightness from various angles, enhancing user experience in multi-user environments like automotive dashboards.
- (4) Capacitive Touch Panel:** The CH400WV23A-CTBA is equipped with a capacitive touch panel that offers a smooth and responsive user interface. This feature is particularly beneficial for interactive applications, such as kiosks and smart home devices, where user engagement is crucial.
- (5) Durable Operating Range:** The display operates effectively within a wide temperature range of -20 to +70 degrees Celsius. This durability makes it suitable for outdoor applications and environments where temperature fluctuations are common, ensuring reliable performance.
- (6) All in Black Design:** The module features an All in Black touch glass cover, which not only enhances its modern aesthetic but also reduces glare and reflections. This design is particularly advantageous in bright environments, improving visibility and user interaction.

Technical Parameters:

Lcd Interface	MIPI
Visible area size	72.06 * 70.38 Mm
Viewing Direction	80/80/80/80
Touch Interface	IIC
Active area size	71.86 * 70.18 Mm
Display Mode	IPS/Transmissive/Normally Black
Module Size	96 * 96 * 4.04 Mm
Module Type	4" TFT + CTP
Number of dots	480x480
Touch Type	Capacitive



Customization:

The CH400WV23A-CTBA display module offers extensive customization options tailored to meet specific client requirements. One of the primary customization features is the **FPC (Flexible Printed Circuit) design**, which can be modified to fit various device configurations, ensuring seamless integration into different applications.

Clients can also adjust the **backlight brightness**, allowing for optimal visibility in diverse lighting conditions. This is particularly important for applications that may be used in bright outdoor environments or dimly lit areas.

Additionally, the **LCD interface** can be customized to suit different systems, with options including MIPI, SPI, and RGB interfaces. This flexibility ensures compatibility with a wide range of electronic devices.

The **touch panel technology** is another area of customization, where clients can choose between capacitive and resistive touch solutions based on their interaction needs. Furthermore, the design of the **touch glass cover** can be tailored, including thickness and finish, to enhance durability and aesthetics.

Chenghao Optoelectronic also provides **branding options**, allowing clients to incorporate logos or specific designs into the module, ensuring a cohesive brand identity

Support and Services:

Chenghao Optoelectronic is dedicated to providing comprehensive support and services for the CH400WV23A-CTBA display module,

ensuring that customers receive the assistance they need throughout the entire product lifecycle. One of the key aspects of our support system is the availability of **pre-sales consultations**. Our technical team is ready to assist clients in selecting the right module for their specific applications, providing insights into the module's features and capabilities.

For customers who require it, we offer **sample units** of the CH400WV23A-CTBA, allowing potential buyers to evaluate the product's performance and suitability for their projects before committing to a larger order. This hands-on experience is invaluable for making informed purchasing decisions.

Once an order is placed, our **customization services** ensure that the module meets the unique specifications of each client. From adjusting the FPC design to modifying the backlight brightness, we work closely with customers to tailor the product to their exact needs.

Post-purchase, Chenghao Optoelectronic provides **technical support** to address any issues that may arise during installation or operation. Our knowledgeable support team is available to answer questions and troubleshoot problems, ensuring that clients can maximize the performance of their display modules.

Additionally, we uphold a commitment to quality assurance, conducting thorough testing of each module before shipment to guarantee reliability and performance. This dedication to quality and customer satisfaction is at the core of our service philosophy, making Chenghao Optoelectronic a trusted partner for display solutions.

FAQ:

Q: What is the brand name of this small LCD touch screen?

A: The brand name is Chenghao Optoelectronic.

Q: What is the model number of this small LCD touch screen?

A: The model number is CH400WV23A-CTBA.

Q: What certifications does this small LCD touch screen have?

A: It is certified with RoHS, CE, and FCC.

Q: What is the minimum order quantity for this small LCD touch screen?

A: The minimum order quantity is 100 pieces.

Q: What are the packaging details for this small LCD touch screen?

A: All the products are packed in a way to keep them safe. For small sizes, we use tray + carton, for bigger sizes, foam slot + carton is used. We also design packages according to customers' requirements.



Shenzhen ChengHao Optoelectronic Co., Ltd.



+86 755-27806536



add@chenghaolcm.com



chenghaolcd.com

7th floor, building C5, Hengfeng Industrial City, Hangcheng street, Bao'an District, Shenzhen