

480x480 Square Lcd Touch Screen Display 4 Inch IPS TFT For 86 Boxes

Our Product Introduction

for more products please visit us on chenghaolcd.com

Basic Information

- Brand Name: Chenghao Optoelectronic
- Certification: RoHS CE FCC
- Model Number: CH400WV23A-CTBA
- Minimum Order Quantity: 100 Pcs
- Packaging Details: All The Products Are Packed In Right Way To Keep It Safe. For Small Sizes Of Products We Use Tray + Carton, For Bigger Sizes We Use Foam Slot + Carton. We Also Design Packages According To Customers' Requirements
- Delivery Time: 3~7 Days
- Payment Terms: TT
- Supply Ability: 300K Pcs/month

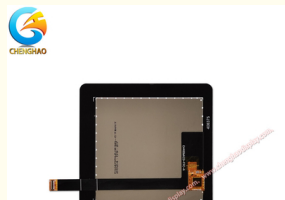


Product Specification

- Touch Type: Capacitive
- Storage Temperature: -30 ~ +80 °C
- Operating Temperature: -20 ~ +70 °C
- Active Area Size: 71.86 * 70.18 Mm
- Display Mode: IPS/Transmissive/Normally Black
- Number Of Dots: 480x480
- Module Size: 96 * 96 * 4.04 Mm
- Lcd Interface: MIPI
- Highlight: 480x480 Square Lcd Touch Screen,
86 Boxes Square Lcd Touch Screen,
86 Boxes 4 Inch IPS TFT





More Images



Product Description

Product Description:

	<p>The CH400WV23A-CTBA is a state-of-the-art 4-inch TFT LCD touch screen module, designed to meet the demands of various applications across multiple industries. With a resolution of 480 x 480 pixels, this display ensures sharp image quality and vibrant colors, making it ideal for both consumer electronics and industrial applications. The module employs IPS (In-Plane Switching) technology, which provides wide viewing angles of 80 degrees, allowing users to enjoy consistent color and brightness from different perspectives.</p> <p>This display module features a capacitive touch panel, which enhances user interaction through its responsive touch capabilities. The touch panel operates at a voltage range of 2.8V to 3.3V, and its glass cover boasts a hardness rating of 6H, ensuring durability and resistance to scratches. Additionally, the touch glass cover has a transmittance rate of $\geq 82\%$, which contributes to excellent visibility even in bright environments.</p>
<p>The CH400WV23A-CTBA is designed for versatility, with a compact size of 96 x 96 x 4.04 mm, making it suitable for integration into devices where space is a constraint. It operates effectively within a temperature range of -20 to +70 degrees Celsius, ensuring reliable performance in various environmental conditions.</p> <p>Chenghao Optoelectronic provides customization options for this module, allowing clients to tailor the display according to their specific project requirements. This includes modifications to the FPC structure and adjustments to backlight brightness, ensuring that the module meets the unique needs of each application.</p> <p>In summary, the CH400WV23A-CTBA combines advanced display technology with robust design features, making it an excellent choice for applications in industrial control, smart home devices, medical equipment, and more.</p>	

Features:

All in Black Touch Glass Cover: The standout feature of the CH400WV23A-CTBA is its touch glass cover, which is designed with an All in Black effect. This aesthetic enhancement not only provides a sleek and modern look but also improves the overall user experience by minimizing reflections and distractions.

High Resolution: The module boasts a resolution of 480 x 480 pixels, ensuring that images and text are displayed with clarity and detail, making it suitable for a variety of applications.

IPS Technology: Utilizing IPS (In-Plane Switching) technology, the CH400WV23A-CTBA offers wide viewing angles of 80 degrees, allowing users to view the display from different positions without significant color distortion.

Durable Touch Panel: The capacitive touch panel is designed for durability, featuring a hardness rating of 6H, which protects against scratches and everyday wear and tear, ensuring longevity in various environments.

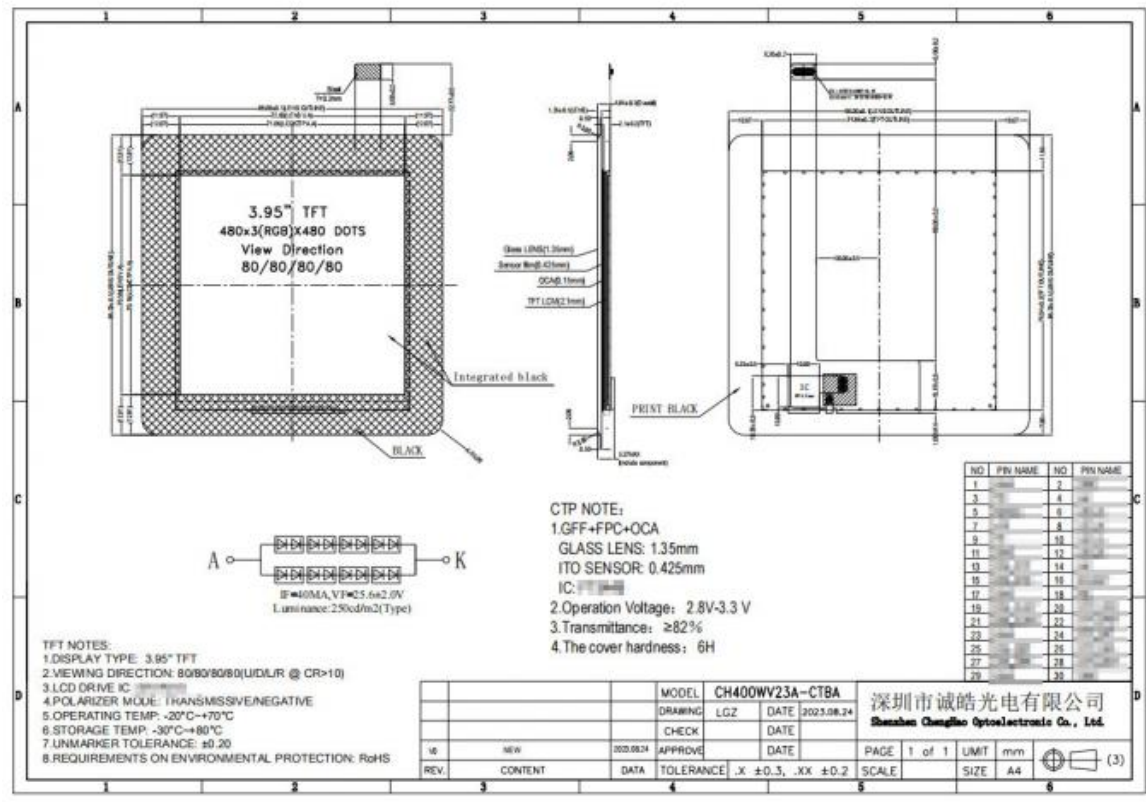
Brightness Level: With a brightness of 600 cd/m², this display module is capable of delivering clear visibility even in bright lighting conditions, making it ideal for outdoor or well-lit environments.

Wide Operating Temperature Range: The CH400WV23A-CTBA operates effectively in a temperature range of -20 to +70 degrees Celsius, allowing it to function reliably in diverse environmental conditions, from industrial settings to consumer electronics.

Technical Parameters:

Operating Temperature	-20 ~ +70 °C
Viewing Direction	80/80/80

Active area size	71.86 * 70.18 Mm
Touch Type	Capacitive
Module Size	96 * 96 * 4.04 Mm
Display Mode	IPS/Transmissive/Normally Black
Module Type	4" TFT + CTP
Touch Interface	IIC
Visible area size	72.06 * 70.38 Mm
Number of dots	480x480



Applications:

The CH400WV23A-CTBA display module is exceptionally versatile, making it suitable for a wide range of applications across various industries. Its compact size and high-resolution capabilities allow it to be seamlessly integrated into industrial control systems. In such environments, the module can be used for monitoring and controlling machinery, providing operators with clear visual feedback and interactive touch capabilities.

In the smart home sector, the CH400WV23A-CTBA serves as an intuitive interface for smart devices, enabling users to manage home automation systems such as lighting, security, and climate control. The All in Black touch glass cover enhances the aesthetic appeal of smart home devices, providing a modern look while ensuring functionality.

The medical equipment industry also benefits from this display module. It can be incorporated into diagnostic devices, patient monitoring systems, and handheld medical instruments, where clear visibility and touch responsiveness are crucial. The durability of the touch panel ensures that it can withstand the rigors of a clinical environment, making it a reliable choice for healthcare applications.

Additionally, the CH400WV23A-CTBA is well-suited for instrumentation applications. It can be utilized in devices that require real-time data visualization, such as environmental sensors and industrial measurement tools. The module's high brightness and wide operating temperature range ensure that it performs reliably in various conditions, making it ideal for outdoor and industrial settings.

Moreover, this display module can be effectively employed in automotive applications. It can be integrated into dashboards, infotainment systems, and navigation devices, providing drivers with essential information in a clear and accessible format. The robustness of the module ensures that it can handle the varying temperatures and lighting conditions typically found in vehicles.

In summary, the CH400WV23A-CTBA is a highly adaptable display solution that meets the diverse needs of multiple industries, ensuring functionality, reliability, and an enhanced user experience.

Customization:

The CH400WV23A-CTBA display module offers a range of customization options, allowing clients to tailor the product to meet their specific needs and application requirements. This flexibility is crucial for businesses looking to integrate the module into diverse environments, ensuring optimal performance and user satisfaction.

One of the primary customization options available is the **modification of the FPC (Flexible Printed Circuit) structure**. Clients can request changes to the shape and layout of the FPC to facilitate easier integration into their devices. This is particularly beneficial for applications where space is constrained or where specific connection points are required.

Another significant area of customization is the **backlight brightness adjustment**. The standard brightness of the CH400WV23A-CTBA is 600 cd/m², but depending on the application, clients may need higher or lower brightness levels. This adjustment ensures that the display performs optimally in various lighting conditions, whether it be in bright outdoor environments or dimly lit indoor settings.

Additionally, clients can define the **LCD interface** to suit their specific project requirements. The CH400WV23A-CTBA typically utilizes a MIPI interface, but alternative interfaces can be implemented based on the client's existing systems. This adaptability allows for seamless integration into a wide range of devices, from industrial machinery to consumer electronics.

The **touch panel design** is another customizable feature. Clients can specify the type of touch technology, such as capacitive or resistive, based on their interaction needs. Furthermore, the design of the touch glass cover can be tailored, including the thickness and finish, to enhance durability and aesthetic appeal.

Chenghao Optoelectronic also offers **custom branding options** for the CH400WV23A-CTBA. Clients can request specific logos or branding elements to be incorporated into the display module, allowing for a cohesive product identity that aligns with their brand image. Lastly, the company provides **technical support** throughout the customization process, ensuring that clients receive guidance and expertise to achieve their desired specifications. This comprehensive support not only streamlines the customization process but also enhances the overall customer experience.

In conclusion, the CH400WV23A-CTBA display module's customization options empower clients to create tailored solutions that meet their unique requirements, making it an ideal choice for a variety of applications across multiple industries

FAQ:

A: The brand name is Chenghao Optoelectronic.

Q: What is the model number of this Small LCD Touch Screen product?

A: The model number is CH400WV23A-CTBA.

Q: What certifications does this Small LCD Touch Screen product have?

A: This product is certified with RoHS, CE, and FCC.

Q: What is the minimum order quantity for this Small LCD Touch Screen product?

A: The minimum order quantity is 100 pieces.

Q: What are the packaging details for this Small LCD Touch Screen product?

A: All the products are packed in the right way to keep them safe. For small sizes, we use Tray + Carton, and for bigger sizes, we use Foam Slot + Carton. We can also design packages according to customers' requirements.



Shenzhen ChengHao Optoelectronic Co., Ltd.



+86 755-27806536



add@chenghaolcm.com



chenghaolcd.com

7th floor, building C5, Hengfeng Industrial City, Hangcheng street, Bao'an District, Shenzhen