

All In Black Lcd Touchscreen 4 Inch 480x480 With MIPI Interface

Our Product Introduction

for more products please visit us on chenghaolcd.com

Basic Information

- Brand Name: Chenghao Optoelectronic
- Certification: RoHS CE FCC
- Model Number: CH400WV23A-CTBA
- Minimum Order Quantity: 100 Pcs
- Packaging Details: All The Products Are Packed In Right Way To Keep It Safe. For Small Sizes Of Products We Use Tray + Carton, For Bigger Sizes We Use Foam Slot + Carton. We Also Design Packages According To Customers' Requirements
- Delivery Time: 3~7 Days
- Payment Terms: TT
- Supply Ability: 300K Pcs/month



Product Specification

- Visible Area Size: 72.06 * 70.38 Mm
- Lcd Interface: MIPI
- Touch Type: Capacitive
- Display Mode: IPS/Transmissive/Normally Black
- Operating Temperature: -20 ~ +70 °C
- Storage Temperature: -30 ~ +80 °C
- Module Size: 96 * 96 * 4.04 Mm
- Touch Interface: IIC
- Highlight: 4 Inch Lcd Touchscreen,
Lcd Touchscreen With MIPI Interface,
480x480 Lcd Touchscreen



More Images



Product Description

Product Description:

The CH400WV23A-CTBA is a compact 4-inch TFT LCD touch screen module designed for a variety of applications requiring high-quality display solutions. With a resolution of 480 x 480 pixels, this module delivers vibrant visuals and sharp images, making it ideal for both industrial and consumer electronics. The display utilizes an IPS (In-Plane Switching) technology, ensuring wide viewing angles of 80 degrees in all directions, which enhances the user experience by providing consistent color reproduction from different perspectives.

This module features a capacitive touch panel, which allows for responsive and intuitive interaction, suitable for applications in smart home devices, medical equipment, and industrial control systems. The touch panel operates at a voltage range of 2.8V to 3.3V and boasts a glass cover with a hardness rating of 6H, ensuring durability and longevity even in demanding environments.

Additionally, the touch glass cover has a transmittance rate of $\geq 82\%$, contributing to the module's excellent visibility under various lighting conditions.



The CH400WV23A-CTBA is designed with flexibility in mind. It supports customization options to meet specific project requirements, including adjustments to backlight brightness and modifications to the FPC structure. With an operating temperature range of -20 to +70 degrees Celsius and a storage temperature range of -30 to +80 degrees Celsius, this module is built to perform reliably in diverse conditions.

Manufactured by Chenghao Optoelectronic, a company committed to quality and innovation, the CH400WV23A-CTBA is an excellent choice for businesses seeking a robust and versatile display solution for their products.

Features:

All in Black Glass Cover: The module has an integrated black touch glass cover installed on the surface, which is completely black when the screen is off, making it ideal for devices that pay special attention to appearance.

Compact Size: The module measures 96 x 96 x 4.04 mm, making it ideal for applications with limited space.

High Resolution: The resolution of up to 480 x 480 pixels provides clear and detailed images.

IPS Display Technology: IPS technology is used to achieve a wide viewing angle of 80 degrees, ensuring consistent color and brightness from all angles.

Capacitive Touch Screen: The module includes a capacitive touch screen for smooth and sensitive touch interaction.

Durable Touch Glass: The touch glass cover has a hardness rating of 6H to ensure scratch and damage resistance.

High Light Transmittance: The touch glass cover has a light transmittance of $\geq 82\%$, which can improve visibility and clarity in different lighting conditions.

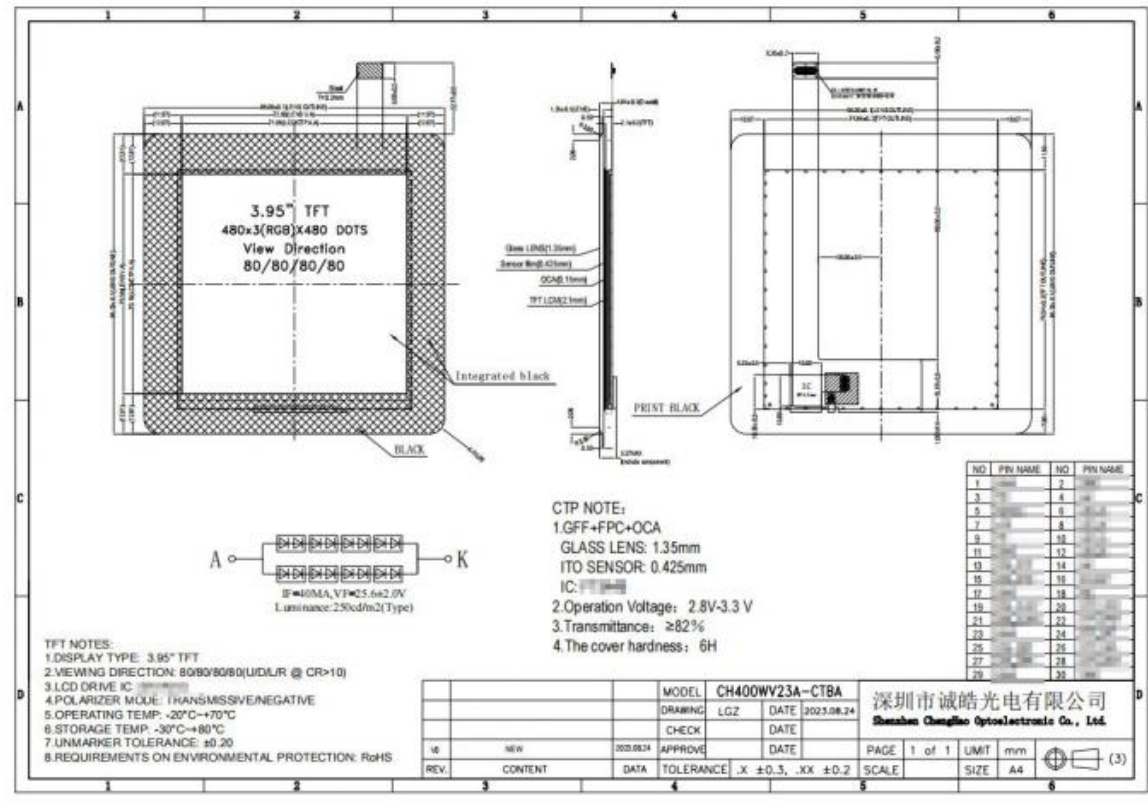
High brightness: With a brightness of up to 600 cd/m², the display is suitable for use in well-lit environments.

Wide operating temperature range: The module can operate effectively in a temperature range of -20 to +70 degrees Celsius, suitable for a variety of applications.

MIPI interface: The module adopts MIPI interface for efficient data transmission, ensuring high performance in display applications.

Technical Parameters:

Active area size	71.86 * 70.18 Mm
Storage Temperature	-30 ~ +80 °C
Touch Type	Capacitive
Module Type	4" TFT + CTP
Display Mode	IPS/Transmissive/Normally Black
Operating Temperature	-20 ~ +70 °C
Visible area size	72.06 * 70.38 Mm
Viewing Direction	80/80/80/80
Module Size	96 * 96 * 4.04 Mm
Touch Interface	IIC



Applications:

The CH400WV23A-CTBA display module is versatile and can be utilized across various industries, making it an ideal choice for numerous applications. Its compact design and high-resolution capabilities make it particularly suitable for **industrial control systems**, where clear visual feedback is essential for monitoring and managing operations. The module can be integrated into control panels and machinery interfaces, allowing operators to interact with equipment efficiently.

In the **smart home sector**, the CH400WV23A-CTBA can serve as a central control interface for smart devices, providing users with an intuitive touch interface to manage lighting, security systems, and climate controls. Its capacitive touch technology enhances user interaction, making it a preferred choice for modern home automation systems.

The **medical equipment industry** also benefits from this module, as it can be incorporated into diagnostic devices, patient monitoring systems, and handheld medical instruments. The durability and high brightness of the display ensure that it remains functional in various clinical environments, providing reliable data visualization for healthcare professionals.

Moreover, the CH400WV23A-CTBA is well-suited for **instrumentation applications**, where precise data representation is crucial. It can be used in devices that require real-time monitoring and display of metrics, such as environmental sensors and industrial measurement tools.

Finally, its adaptability extends to **vehicle-mounted applications**, where it can be used in dashboards, infotainment systems, and navigation devices. The module's robust performance in varying temperatures and lighting conditions makes it a reliable choice for automotive displays.

Overall, the CH400WV23A-CTBA is a highly adaptable display solution that meets the diverse needs of multiple industries, ensuring functionality and user satisfaction

Support and Services:

Chenghao Optoelectronic is committed to providing comprehensive support and services for the CH400WV23A-CTBA display module, ensuring that customers receive the assistance they need throughout the entire product lifecycle. One of the key features of our service is the availability of **samples** for potential buyers. This allows customers to evaluate the module's performance and suitability for their specific applications before making a bulk purchase.

We understand that customization is crucial for many projects, which is why we offer **tailored solutions** to meet individual customer requirements. This includes modifications to the module's design, such as adjustments to the shape and structure of the flexible printed

circuit (FPC), as well as the ability to alter backlight brightness and define the LCD interface. Our team of experts collaborates closely with clients to ensure that the final product aligns perfectly with their needs.

Additionally, we maintain a **minimum order quantity (MOQ)** of 100 pieces, making it accessible for businesses of various sizes to integrate our display modules into their products. Our dedicated customer support team is available to assist with any inquiries regarding order placement, technical specifications, and post-purchase support.

Chenghao Optoelectronic adheres to strict quality management standards, including ISO9001 and ISO14001, ensuring that our products meet high-quality benchmarks and environmental considerations. This commitment to quality is reflected in the reliability and performance of the CH400WV23A-CTBA module, providing customers with peace of mind in their investment.

Overall, our robust support and service framework is designed to facilitate a smooth and efficient experience for our clients, from initial inquiry to final implementation

FAQ:

Q: What is the brand name of this Small LCD Touch Screen product?

A: The brand name is Chenghao Optoelectronic.

Q: What is the model number of this Small LCD Touch Screen?

A: The model number is CH400WV23A-CTBA.

Q: What certifications does this Small LCD Touch Screen product have?

A: This product is certified with RoHS, CE, and FCC.

Q: What is the minimum order quantity for this Small LCD Touch Screen?

A: The minimum order quantity is 100 pcs.

Q: What are the packaging details for this Small LCD Touch Screen product?

A: All the products are packed in the right way to keep them safe. For small sizes of products, we use tray + carton, and for bigger sizes, we use foam slot + carton. We also design packages according to customers' requirements.



Shenzhen ChengHao Optoelectronic Co., Ltd.



+86 755-27806536



add@chenghaolcm.com



chenghaolcd.com

7th floor, building C5, Hengfeng Industrial City, Hangcheng street, Bao'an District, Shenzhen