

1000 Cd/m2 Brightness TFT LCD Capacitance Touch Display 12 Inch 1920x1080 Resolution

Our Product Introduction

for more products please visit us on chenghaolcd.com

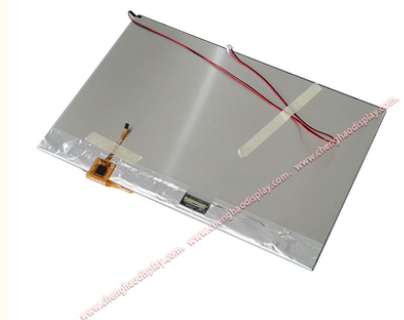
Basic Information

- Brand Name: Chenghao Optoelectronic
- Certification: CE RoHS FCC
- Model Number: CH120FH01A-CT
- Minimum Order Quantity: No Moq
- Packaging Details: All The Products Are Packed In Right Way To Keep It Safe. For Small Sizes Of Products We Use Tray + Carton, For Bigger Sizes We Use Foam Slot + Carton. We Also Design Packages According To Customers' Requirements
- Delivery Time: 3~7 Days
- Payment Terms: TT Or Others
- Supply Ability: 20000000 Pcs/month



Product Specification

- Touch Glass Cover Thickness: 1.1 Mm
- Display Mode: IPS /transmissive/ Normally Black
- Touch Panel Type: Capacitive
- Storage Temperature: -30 ~ +80 °C
- Viewing Direction: 80/80/80/80
- Operating Temperature: -20 ~ +70 °C
- LCD Interface: EDP
- Resolution: 1920x1080 Dots



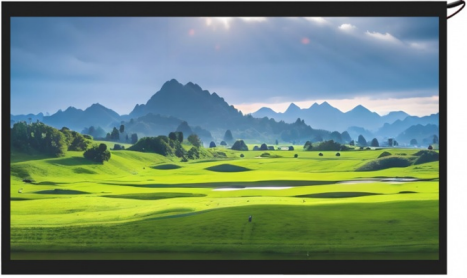
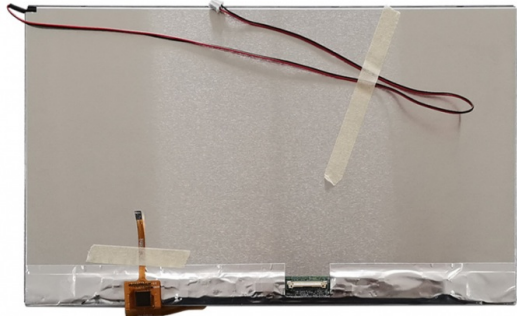
More Images





Product Description

Product Description:

	<p>The CH120FH01A-CT is an advanced 12-inch IPS TFT LCD touch screen module designed to provide high-definition visuals and excellent touch response speed. Manufactured by Shenzhen Chenghao Optoelectronics, the module is tailored for a variety of industry applications, including industrial control, smart home devices, medical equipment, etc. With a resolution of up to 1920 x 1080 pixels, the display module provides stunning clarity and detail for images and videos. With a brightness of up to 1000 cd/m², the CH120FH01A-CT ensures clear visibility even in bright environments, making it ideal for outdoor applications or areas with ample ambient light. The application of IPS technology enables it to have a wide viewing angle of 80 degrees in all directions, ensuring that colors remain vivid and consistent no matter where the viewer is.</p>
<p>The touch function of the CH120FH01A-CT is realized by a capacitive touch panel that supports multi-touch functionality. This feature enhances the user interaction experience, supporting intuitive gesture operation and seamless navigation. The touch panel uses a 1.1mm thick, 6H hardness glass cover, which is durable and not easy to scratch. In addition, the light transmittance of the touch glass cover is as high as $\geq 87\%$, ensuring that the brightness and color accuracy of the display are not affected.</p> <p>In terms of environmental adaptability, the CH120FH01A-CT can operate efficiently in a temperature range of -20°C to +70°C, suitable for a variety of applications from industrial environments to consumer electronics. In addition, the module can withstand storage temperatures as low as -30°C and as high as +80°C, ensuring reliable operation under various conditions.</p>	

Features:

High Resolution: The CH120FH01A-CT features a full-HD resolution of 1920 x 1080 pixels, providing sharp and clear images for an enhanced viewing experience .

IPS Technology: This module utilizes IPS (In-Plane Switching) technology, which allows for wide viewing angles of 80 degrees in all directions, ensuring consistent color reproduction and clarity from various perspectives .

Brightness: With a brightness level of 1000 cd/m², the display is designed for excellent visibility even in bright environments, making it suitable for outdoor applications.

Capacitive Touch Panel: The CH120FH01A-CT is equipped with a capacitive touch panel that supports multi-touch functionality, allowing for intuitive user interactions and gestures .

Durable Touch Glass: The touch glass cover has a thickness of 1.1 mm and a hardness rating of 6H, providing resistance to scratches and ensuring durability in various usage scenarios.

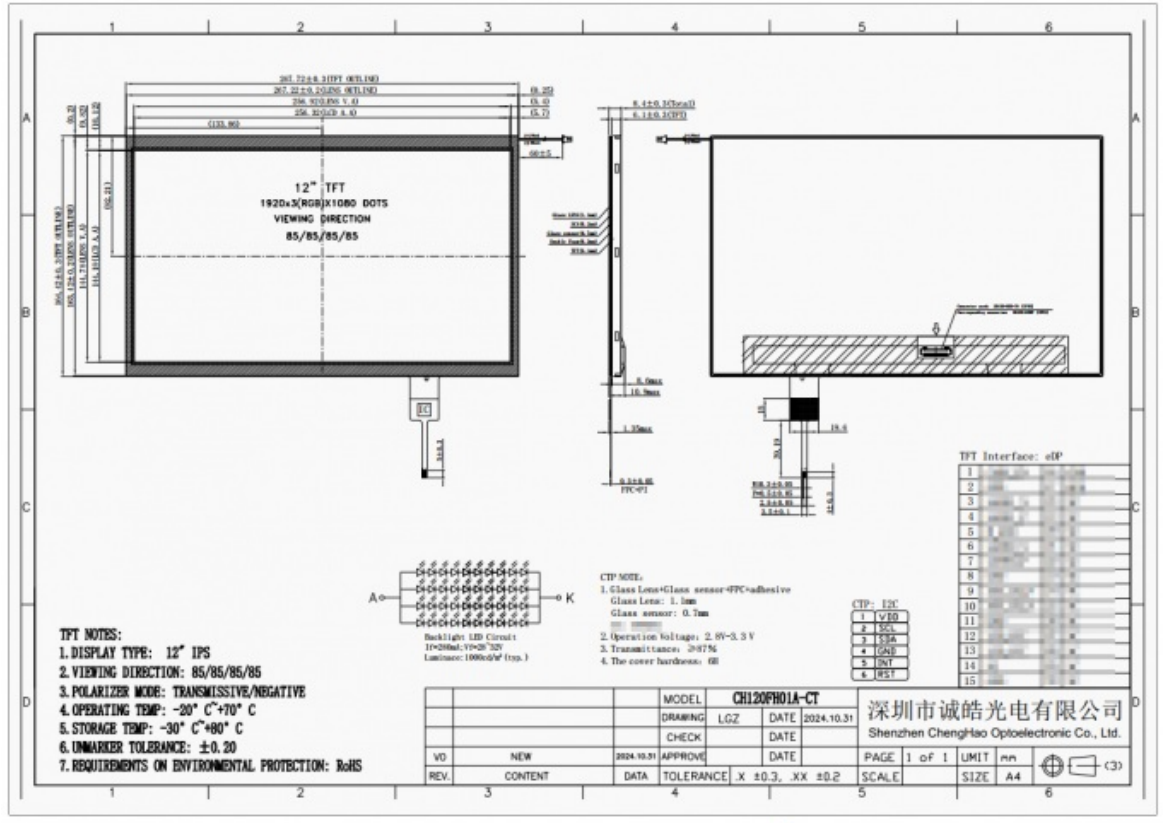
High Transmittance: The touch glass cover achieves a transmittance of $\geq 87\%$, which helps maintain the display's brightness and color accuracy [2].

Wide Operating Temperature Range: This module operates effectively in a temperature range of -20°C to +70°C, making it versatile for different environments and applications .

Technical Parameters:

Color	16M
Resolution	1920x1080 Dots

Display Mode	IPS /transmissive/ Normally Black
Viewing Direction	80/80/80/80
Storage Temperature	-30 ~ +80 °C
Touch Glass Cover Thickness	1.1 Mm
Operating Temperature	-20 ~ +70 °C
LCD Interface	EDP
Touch Panel Interface	I2C
Touch Panel Type	Capacitive



Applications:

The CH120FH01A-CT display module is designed for versatility and can be utilized across a wide range of industries and applications. Below are some key areas where this advanced display technology can be effectively implemented:

Industrial Control: The CH120FH01A-CT is ideal for industrial control systems, where clear and precise visual feedback is essential. Its high resolution and brightness make it suitable for monitoring and controlling machinery, automation systems, and process controls in factories and manufacturing plants.

Medical Equipment: In the medical field, this display module can be integrated into various devices such as patient monitors, diagnostic equipment, and portable medical devices. The module's durability and wide operating temperature range ensure reliable performance in critical healthcare environments.

Smart Home Devices: The CH120FH01A-CT can be used in smart home applications, including smart thermostats, home automation panels, and interactive displays for home appliances. Its capacitive touch functionality allows for user-friendly interfaces that enhance the overall smart home experience.

Instrumentation and Measurement: This module is suitable for instrumentation applications, such as data acquisition systems and measurement devices. Its high brightness and clarity enable users to easily read and interpret data in various lighting conditions.

Automotive Displays: The CH120FH01A-CT can be integrated into vehicle-mounted applications, including central control displays, navigation systems, and infotainment units. The module's wide viewing angles and robust design make it an excellent choice for automotive environments.

Internet of Things (IoT) Devices: With the rise of IoT technology, the CH120FH01A-CT can be utilized in various connected devices, such as smart meters, home security systems, and environmental monitoring systems. Its customizable features allow for tailored solutions that meet specific IoT application requirements.

Digital Signage: This display module can also be employed in digital signage applications, where vibrant visuals and clear messaging are crucial. Its high brightness and color accuracy make it effective for advertising displays, information kiosks, and interactive promotional materials.

Consumer Electronics: The CH120FH01A-CT can be integrated into various consumer electronics, such as tablets, laptops, and gaming devices. Its high-definition display and responsive touch functionality enhance the user experience in everyday electronics.

Education and Training Devices: In educational settings, this module can be used in interactive learning tools, training simulators, and e-learning platforms. Its clarity and touch capabilities facilitate engaging and effective learning experiences.

In conclusion, the CH120FH01A-CT display module is a highly adaptable solution that can be implemented in numerous fields, providing reliable performance and exceptional visual quality in a variety of applications. Its versatility and customization options make it an ideal choice for businesses looking to enhance their products with advanced display technology.

FAQ:

A: The brand of the product is Chenghao Optoelectronic.

Q: What is the model number of the TFT LCD Capacitive Touchscreen product?

A: The model number is CH120FH01A-CT.

Q: What certifications does the TFT LCD Capacitive Touchscreen product have?

A: The product is certified with CE, RoHS, and FCC.

Q: Is there a minimum order quantity requirement for this product?

A: No, there is no minimum order quantity (Moq) for this product.

Q: What are the packaging details for the TFT LCD Capacitive Touchscreen product?

A: All the products are packed in the right way to keep them safe. For small sizes, we use tray + carton, and for bigger sizes, we use foam slot + carton. We also design packages according to customers' requirements.

Q: What is the delivery time for the TFT LCD Capacitive Touchscreen product?

A: The delivery time is 3~7 days.

Q: What are the payment terms for purchasing the TFT LCD Capacitive Touchscreen product?

A: The payment terms are TT (Telegraphic Transfer) or others.

Q: What is the supply ability of the TFT LCD Capacitive Touchscreen product?

A: The supply ability is 20,000,000 pieces per month.



Shenzhen ChengHao Optoelectronic Co., Ltd.



+86 755-27806536



add@chenghaolcm.com



chenghaolcd.com

7th floor, building C5, Hengfeng Industrial City, Hangcheng street, Bao'an District, Shenzhen