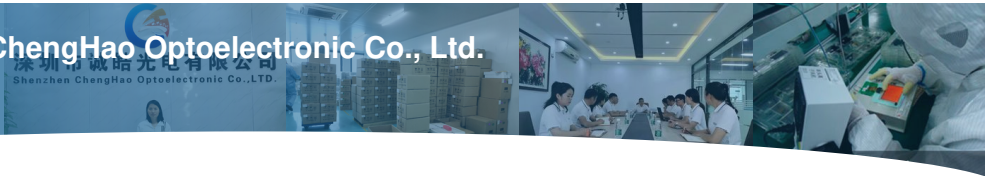




Shenzhen ChengHao Optoelectronic Co., Ltd.

chenghaolcd.com



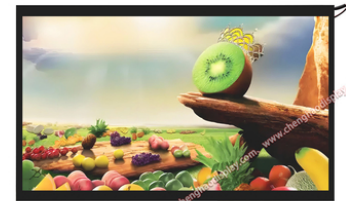
## 1920x1080 High Resolution Touch Screen 12 Inch 1000 nits Luminance With EDP Interface

### Our Product Introduction

for more products please visit us on [chenghaolcd.com](http://chenghaolcd.com)

#### Basic Information

- Brand Name: Chenghao Optoelectronic
- Certification: CE RoHS FCC
- Model Number: CH120FH01A-CT
- Minimum Order Quantity: No Moq
- Packaging Details: All The Products Are Packed In Right Way To Keep It Safe. For Small Sizes Of Products We Use Tray + Carton, For Bigger Sizes We Use Foam Slot + Carton. We Also Design Packages According To Customers' Requirements
- Delivery Time: 3~7 Days
- Payment Terms: TT Or Others
- Supply Ability: 20000000 Pcs/month



#### Product Specification

- Touch Panel Type: Capacitive
- LCD Interface: EDP
- Touch Glass Cover Thickness: 1.1 Mm
- Operating Temperature: -20 ~ +70 °C
- Storage Temperature: -30 ~ +80 °C
- Resolution: 1920x1080 Dots
- Color: 16M
- Display Mode: IPS /transmissive/ Normally Black



#### More Images



## Product Description

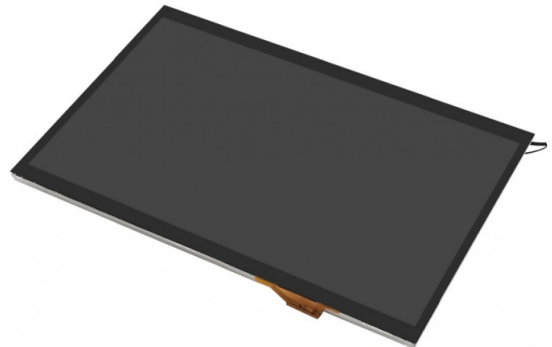
### Product Description:

The CH120FH01A-CT is a 12-inch IPS TFT LCD touch screen module manufactured by LCD display solution provider Chenghao Optoelectronics. It combines high performance with excellent reliability, making it ideal for applications such as industrial control and consumer electronics.



The core feature of the CH120FH01A-CT lies in its impressive 1920 x 1080 pixel Full HD resolution. This high resolution ensures that images and videos are displayed with excellent clarity and detail, which is essential for applications that require precise visual feedback. The display uses IPS (In-Plane Switching) technology to achieve a wide viewing angle of 80 degrees in all directions, ensuring that colors remain vivid and consistent no matter where the viewer is. A highlight of the CH120FH01A-CT is its brightness of up to 1000 cd/m<sup>2</sup>. Such high brightness makes the display ideal for use in bright environments, ensuring clear visibility even in direct sunlight. This feature is particularly useful in outdoor applications or environments where ambient light may affect screen readability.

The module is equipped with a capacitive touch panel and supports multi-touch functionality for intuitive user interaction. This feature enhances the user experience, making it easier for users to navigate applications and access information. The touch glass cover is 1.1 mm thick and has a hardness rating of 6H, which is durable and scratch-resistant, which is critical for devices that are frequently used. In terms of environmental adaptability, the CH120FH01A-CT can operate effectively in a temperature range of -20°C to +70°C, suitable for a variety of applications, including harsh industrial environments. In addition, the module can withstand storage temperatures of -30°C to +80°C, ensuring reliability under various conditions.



### Features:

**Full HD Resolution:** The CH120FH01A-CT offers a stunning resolution of 1920 x 1080 pixels, ensuring high-quality image clarity and detail for various applications.

**IPS Display Technology:** Utilizing In-Plane Switching (IPS) technology, this module provides wide viewing angles of 80 degrees in all directions, allowing for consistent color and brightness from different perspectives.

**High Brightness:** With a brightness level of 1000 cd/m<sup>2</sup>, the display ensures excellent visibility even in bright lighting conditions, making it suitable for outdoor and well-lit environments.

**Capacitive Touch Functionality:** The module features a capacitive touch panel that supports multi-touch interactions, enhancing user engagement and making navigation intuitive and responsive.

**Durable Touch Glass:** The touch glass cover is 1.1 mm thick and has a hardness rating of 6H, providing resistance to scratches and ensuring durability for everyday use.

**High Transmittance:** The touch glass cover achieves a transmittance of  $\geq 87\%$ , which helps maintain the display's brightness and color fidelity, contributing to an enhanced viewing experience.

**Wide Operating Temperature Range:** The CH120FH01A-CT operates effectively in a temperature range of -20°C to +70°C, making it suitable for a variety of environments, including industrial settings.

### Technical Parameters:

Operating Temperature	-20 ~ +70 °C
Display Mode	IPS /transmissive/ Normally Black

Touch Panel Interface	I2C
Brightness	1000 Cd/m2
Touch Panel Type	Capacitive
Color	16M
Resolution	1920x1080 Dots
LCD Interface	EDP
Storage Temperature	-30 ~ +80 °C
Touch Glass Cover Thickness	1.1 Mm

### Applications:

The CH120FH01A-CT display module is engineered for versatility and can be effectively utilized in a myriad of applications across various industries. Below are some key sectors where this advanced display technology can be implemented:

**Industrial Automation:** The CH120FH01A-CT is well-suited for industrial automation systems, where it can serve as a control panel for machinery and equipment. Its high resolution and brightness ensure that operators can easily monitor processes and make adjustments in real-time, enhancing operational efficiency.

**Healthcare Devices:** In the medical field, this display module can be integrated into devices such as diagnostic machines, patient monitoring systems, and handheld medical devices. The clarity and responsiveness of the touch interface facilitate accurate data display and user interaction, which are critical in healthcare settings.

**Smart Home Applications:** The CH120FH01A-CT can be utilized in smart home technologies, such as control panels for home automation systems, smart thermostats, and interactive displays for appliances. Its capacitive touch functionality allows for seamless user engagement, making it easier for homeowners to control their smart devices.

**Consumer Electronics:** This module is ideal for various consumer electronics, including tablets, laptops, and gaming devices. Its high-definition display and responsive touch capabilities enhance the user experience, providing vibrant visuals and intuitive controls.

**Automotive Displays:** The CH120FH01A-CT can be integrated into automotive applications, such as dashboard displays, infotainment systems, and navigation units. Its wide viewing angles and robust design make it suitable for use in vehicles, ensuring that information is easily readable from different seating positions.

**Internet of Things (IoT) Devices:** As IoT technology continues to expand, the CH120FH01A-CT is well-positioned for use in connected devices, such as smart meters, environmental sensors, and home security systems. Its customizable features allow it to meet the specific needs of various IoT applications.

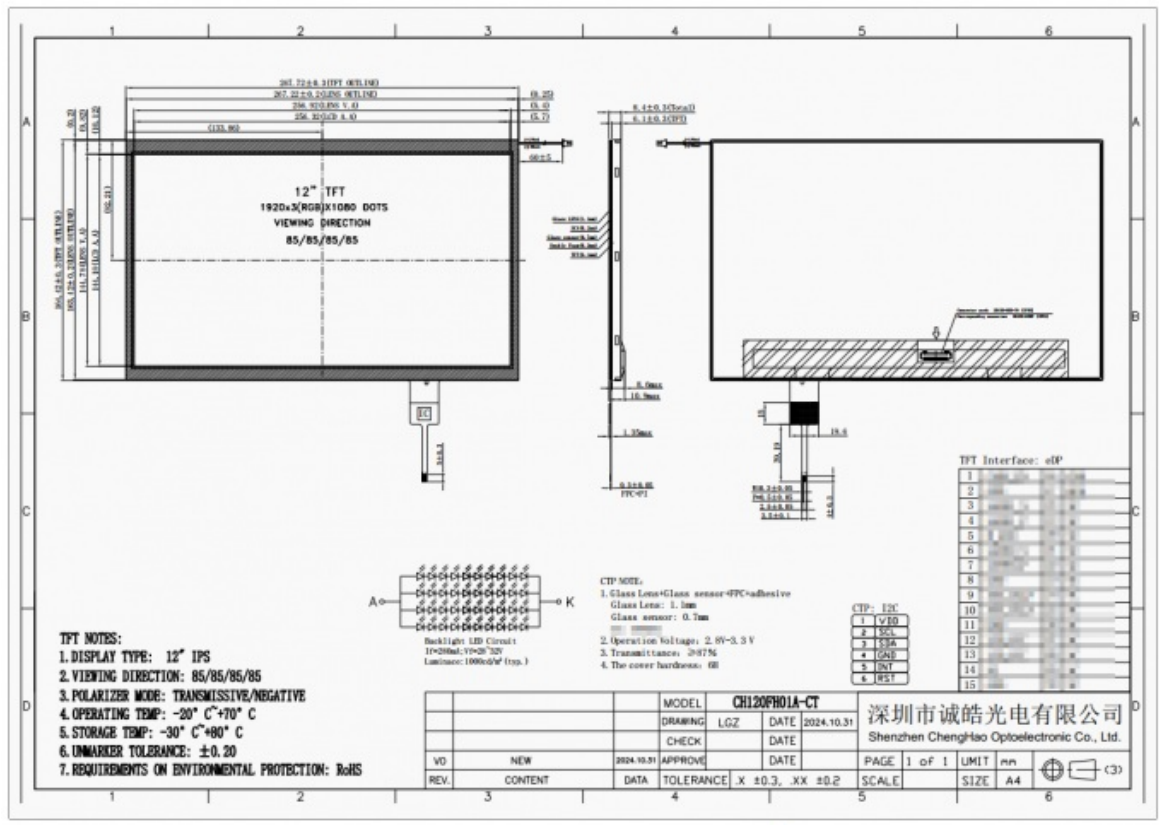
**Digital Signage:** This display module can also be employed in digital signage solutions, where clear visuals and vibrant colors are essential for effective communication. Its high brightness makes it suitable for outdoor advertising displays, information kiosks, and interactive marketing materials.

**Educational Tools:** In educational environments, the CH120FH01A-CT can be used in interactive learning tools, such as electronic whiteboards and training simulators. Its touch capabilities and high-resolution display facilitate engaging and effective learning experiences.

**Instrumentation and Measurement:** The module is suitable for instrumentation applications, including data logging systems and measurement devices. Its clarity and responsiveness enable users to easily read and interpret critical data, enhancing decision-making processes.

**Vending Machines and Kiosks:** The CH120FH01A-CT can be integrated into vending machines and self-service kiosks, where user-friendly interfaces are essential. Its durable touch panel and high visibility make it ideal for interactive customer experiences in retail environments.

In summary, the CH120FH01A-CT display module is a highly adaptable solution that can be effectively utilized in a wide range of applications. Its impressive specifications and customization options make it an excellent choice for businesses looking to enhance their products with advanced display technology.



- FAQ:**
- A: The brand name is Chenghao Optoelectronic.
- Q: What is the model number of this TFT LCD Capacitive Touchscreen product?
- A: The model number is CH120FH01A-CT.
- Q: What certifications does this TFT LCD Capacitive Touchscreen product have?
- A: This product is certified with CE, RoHS, and FCC.
- Q: What is the minimum order quantity for this TFT LCD Capacitive Touchscreen product?
- A: There is no minimum order quantity (No Moq) required.
- Q: What are the packaging details for this TFT LCD Capacitive Touchscreen product?
- A: All the products are packed in the right way to keep them safe. For small sizes, we use tray + carton, and for bigger sizes, we use foam slot + carton. We also design packages according to customers' requirements.



Shenzhen ChengHao Optoelectronic Co., Ltd.



+86 755-27806536



add@chenghaolcm.com



chenghaolcd.com

7th floor, building C5, Hengfeng Industrial City, Hangcheng street, Bao'an District, Shenzhen