



Sunlight Readable Tft Display 1920*1080 12 Inch IPS Lcd Screen With Pacp Touch

Our Product Introduction

for more products please visit us on chenghaolcd.com

Basic Information

- Brand Name: Chenghao Optoelectronic
- Certification: CE RoHS FCC
- Model Number: CH120FH01A-CT
- Minimum Order Quantity: No Moq
- Packaging Details: All The Products Are Packed In Right Way To Keep It Safe. For Small Sizes Of Products We Use Tray + Carton, For Bigger Sizes We Use Foam Slot + Carton. We Also Design Packages According To Customers' Requirements
- Delivery Time: 3~7 Days
- Payment Terms: TT Or Others
- Supply Ability: 20000000 Pcs/month



Product Specification

- LCD Interface: EDP
- Touch Glass Cover Thickness: 1.1 Mm
- Viewing Direction: 80/80/80/80
- Resolution: 1920x1080 Dots
- Operating Temperature: -20 ~ +70 °C
- Color: 16M
- Touch Panel Type: Capacitive
- Touch Panel Interface: I2C



More Images





Product Description

Product Description:

The CH120FH01A-CT is a high-performance 12-inch IPS TFT LCD touch screen module designed to meet the needs of various industry applications. Manufactured by Chenghao Optoelectronic, the module features a full HD resolution of 1920 x 1080, ensuring clear images and rich details, and is suitable for multiple fields such as industrial control, medical equipment, consumer electronics, etc.



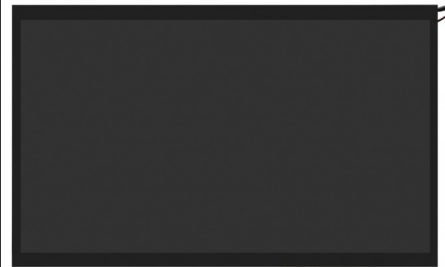
The display module uses IPS (In-Plane Switching) technology and provides a wide viewing angle of 80 degrees, ensuring consistent color and brightness at different angles. This feature makes the CH120FH01A-CT perform well in multi-user environments and is suitable for application scenarios that require multiple people to view at the same time. In addition, the module has a brightness of up to 1000 cd/m², which can maintain good readability even in strong light environments, suitable for outdoor and bright indoor use.

The CH120FH01A-CT is equipped with a capacitive touch panel that supports multi-touch and provides an intuitive user interaction experience. The touch glass has a thickness of 1.1 mm and a hardness rating of 6H, ensuring scratch resistance and durability, suitable for devices that are frequently used. The touch panel of the module also has a transmittance of ≥87%, ensuring the accuracy of display brightness and color and improving the user experience.

In terms of environmental adaptability, the CH120FH01A-CT can operate stably in a temperature range of -20°C to +70°C, suitable for various industrial and commercial environments. In addition, the storage temperature range of the module is -30°C to +80°C, ensuring reliability under extreme conditions.

With a size of 267.72 mm x 164.42 mm x 8.4 mm, the CH120FH01A-CT has a compact design that is easy to integrate into various devices without taking up too much space. Chenghao Optoelectronic also provides customized services, and customers can adjust the FPC shape, backlight brightness, LCD interface, etc. according to specific needs to ensure that the module can perfectly adapt to different application scenarios.

In short, the CH120FH01A-CT is a display solution that combines high performance, durability and flexibility to meet the needs of the modern market for high-quality display modules. Whether in industrial, medical or consumer electronics, it can provide excellent visual experience and user interaction.



Features:

High-resolution display

The CH120FH01A-CT provides a full HD resolution of 1920 x 1080, making images and videos appear clear and detailed. This feature is ideal for medical equipment, such as ultrasound instruments and monitors, which can clearly display the patient's physiological data and images, helping medical staff make accurate judgments.

Wide-viewing angle IPS technology

The module uses IPS (In-Plane Switching) technology to provide an 80-degree wide viewing angle, ensuring color consistency at different angles. This feature makes it particularly important in multi-user environments in conference rooms, such as video conferencing systems or display screens, to ensure that all participants can see the content clearly.

High-brightness display

The CH120FH01A-CT has a brightness of up to 1000 cd/m², making it still readable in strong light environments. This makes it ideal for outdoor applications such as billboards and information kiosks, which can clearly display information in direct sunlight and attract the attention of passers-by.

Durable touch panel

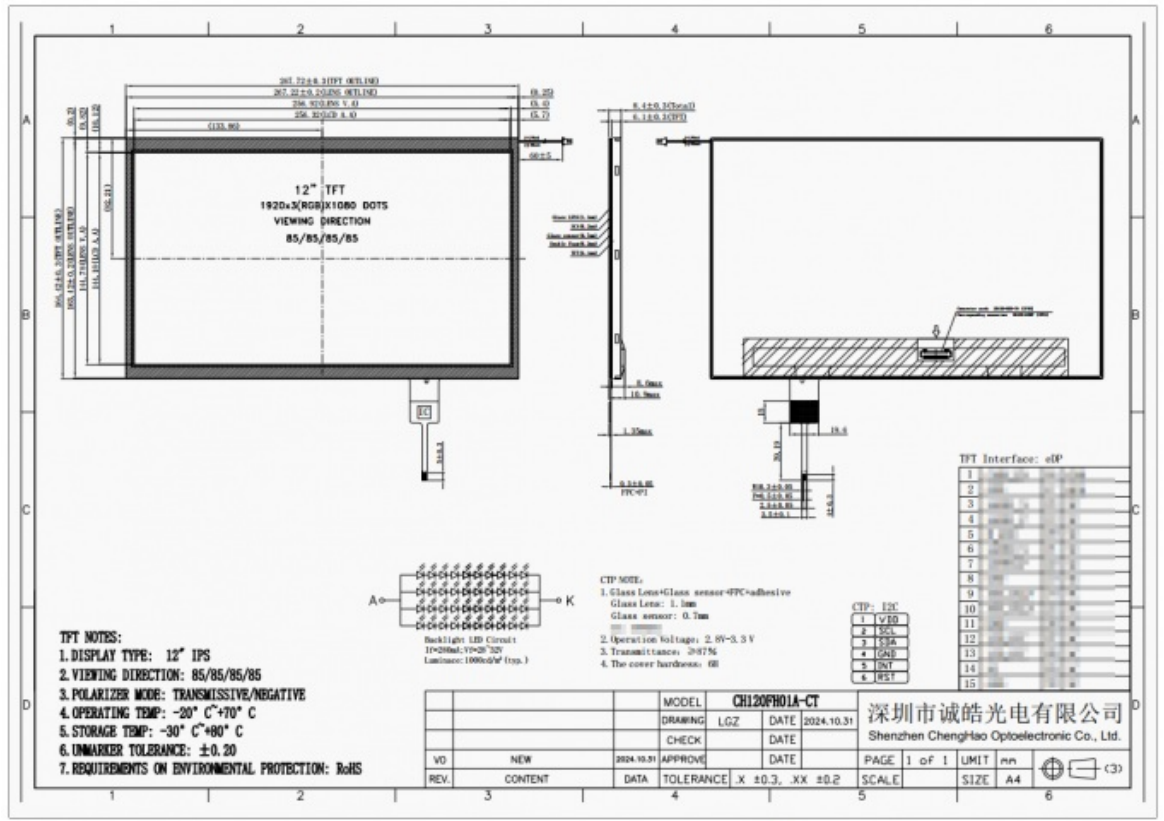
The module is equipped with a 1.1mm thick capacitive touch panel with a hardness of 6H, providing excellent scratch resistance and durability. This feature makes it suitable for industrial control panels and self-service terminals, and can withstand frequent operations without damage, ensuring long-term stable use.

Wide operating temperature range

The CH120FH01A-CT can operate stably in a temperature range of -20°C to +70°C, suitable for various industrial environments. This feature enables it to be used in extreme conditions, such as in outdoor monitoring systems or industrial automation equipment, ensuring normal operation in harsh environments.

Technical Parameters:

Resolution	1920x1080 Dots
Operating Temperature	-20 ~ +70 °C
Brightness	1000 Cd/m2
Storage Temperature	-30 ~ +80 °C
Viewing Direction	80/80/80/80
Display Mode	IPS /transmissive/ Normally Black
LCD Interface	EDP
Touch Panel Interface	I2C
Touch Glass Cover Thickness	1.1 Mm
Touch Panel Type	Capacitive



Support and Services:

After purchasing the CH120FH01A-CT display module, Chenghao Optoelectronic provides customers with comprehensive support and services to ensure that customers get the best experience during use. Our services include the following key aspects:

One-year after-sales guarantee

For customers who purchase CH120FH01A-CT, we provide one-year product after-sales guarantee service. This means that within 12 months after purchase, customers can enjoy free repair or replacement services for product quality problems, ensuring that customers' investments are fully protected.

Technical support

During the customer's testing or use of the product, if any technical problems are encountered, our technical team will provide remote online technical support. Whether it is installation, configuration or troubleshooting, customers can contact the technical support team at any time, and we will respond quickly and provide solutions.

Strict quality inspection

All CH120FH01A-CT modules shipped from the factory are strictly inspected and tested to ensure that each product meets high standards of quality before being delivered to customers. In addition, our products have passed CE and RoHS certification to ensure compliance with international safety and environmental standards.

Professional after-sales service team

Chenghao Optoelectronic has a professional after-sales service team that can provide customers with strong protection and logistics technology services. Our team can not only handle common after-sales issues, but also provide personalized services according to the specific needs of customers.

Flexible logistics solutions

We have established long-term cooperative relationships with many express logistics companies, and these logistics companies are able to provide us with discounts due to our large export volume. This means that customers can enjoy more competitive shipping costs when placing orders, while ensuring that the products can be delivered safely and on time.

In short, Chenghao Optoelectronic is committed to providing customers with comprehensive support and services to ensure the smooth

use of the CH120FH01A-CT display module. Our goal is to improve customer satisfaction and trust through high-quality products and services. No matter what problems customers encounter during use, we will serve you wholeheartedly.

FAQ:

A: The Brand Name is Chenghao Optoelectronic. -----
Q: What is the Model Number of this product?
A: The Model Number is CH120FH01A-CT.
Q: What certifications does this product have?
A: This product is certified with CE, RoHS, and FCC.
Q: What is the Minimum Order Quantity for this product?
A: There is no Minimum Order Quantity (No Moq) required.
Q: What are the Packaging Details for this product?
A: All the products are packed in the right way to keep them safe. For small sizes, we use Tray + Carton, and for bigger sizes, we use Foam Slot + Carton. We also design packages according to customers' requirements.



Shenzhen ChengHao Optoelectronic Co., Ltd.



+86 755-27806536



add@chenghaolcm.com



chenghaolcd.com

7th floor, building C5, Hengfeng Industrial City, Hangcheng street, Bao'an District, Shenzhen