



1000 High Brightness Small Lcd Panel 320*240 Pixels with Black Glass Cover

Our Product Introduction

for more products please visit us on chenghaolcd.com

Basic Information

- Brand Name: Chenghao Optoelectronic
- Certification: RoHS CE FCC
- Model Number: CH200QV03B-L
- Minimum Order Quantity: 100 Pcs
- Packaging Details: All The Products Are Packed In Right Way To Keep It Safe. For Small Sizes Of Products We Use Tray + Carton, For Bigger Sizes We Use Foam Slot + Carton. We Also Design Packages According To Customers' Requirements
- Delivery Time: 3~7 Days
- Payment Terms: TT
- Supply Ability: 300K Pcs/month



Product Specification

- Storage Temperature: -30 ~ +80 °C
- Operating Temperature: -20 ~ +70 °C
- Number Of Dots: 320x240
- Lcd Type: 2" TFT + CTP
- Viewing Area Size: 41.4 X 31.2 Mm
- Module Size: 53.3 X 50.5 X 4.28 Mm
- Brightness: 1000 Cd/m2 Luminance
- Display Mode: IPS/Transmissive/normally Black




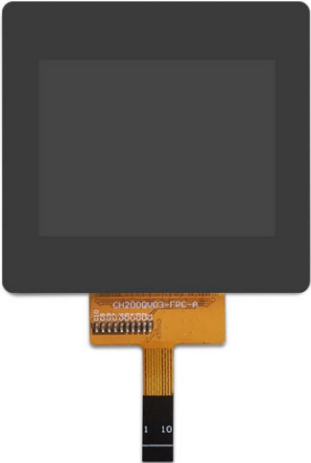
More Images





Product Description

Product Description:

<p>CH200QV03B-L is a high-performance 2-inch TFT LCD module developed by Chenghao Optoelectronic. Designed to meet a variety of application requirements, the module is widely used in multiple industries with its excellent display effect and reliable performance. As a company established in 2016, Chenghao Optoelectronic has accumulated rich experience in the research and development, production and sales of small and medium-sized display modules, and is committed to providing customers with high-quality display solutions.</p> <p>The CH200QV03B-L has an appearance size of 53.3 x 50.5 x 4.28 mm, a viewing area of 44.85 x 39.5 mm and an effective area of 40.8 x 30.6 mm. Its design adopts advanced IPS (In-Plane Switching) technology to ensure a wide viewing angle display effect, and the viewing direction reaches the standard of 85/85/85/85. This design enables the CH200QV03B-L to maintain color accuracy and consistency at different angles, suitable for application scenarios that require high-quality image display, such as medical equipment, industrial control, and smart home.</p>	
<p>In terms of functional parameters, the CH200QV03B-L has a resolution of 240x320 pixels, which can provide clear images and delicate display effects. This high-resolution feature makes the module particularly outstanding in detail performance, which can meet the user's high requirements for visual effects. In addition, the module has a brightness of up to 1000 cd/m², ensuring that it can still be clearly seen in strong light environments, suitable for use outdoors or in environments with strong light.</p>	
	<p>The operating temperature range of the CH200QV03B-L is -20°C to 70°C, and the storage temperature range is -30°C to 80°C, ensuring its stability and reliability under extreme environmental conditions. This makes the module particularly suitable for industrial automation, medical equipment, and other applications that need to work in a changing environment.</p> <p>In addition, the CH200QV03B-L supports the SPI interface, which is convenient for connection with various controllers and systems, simplifying the integration process. The design of this module not only takes into account performance, but also pays attention to the user's customization needs. Chenghao Optoelectronic provides customized services, customers can adjust the shape and structure of FPC, modify the backlight brightness, define LCD interface, and even design customized touch panels according to their specific needs. This flexibility enables CH200QV03B-L to be widely used in multiple industries, including artificial intelligence, IoT devices, automotive applications, etc.</p>

Features:

High resolution

CH200QV03B-L has a resolution of 240x320 pixels, providing clear image display, suitable for applications that require delicate visual effects.

IPS display technology

Adopting IPS (In-Plane Switching) technology, it ensures wide viewing angle display, with a viewing angle of 85/85/85/85, and can maintain color accuracy and consistency at different angles.

High brightness

The module has a brightness of up to 1000 cd/m², ensuring good readability in strong light environments, suitable for outdoor and light-intensive application scenarios.

Compact size

The appearance size is 53.3 x 50.5 x 4.28 mm, suitable for use in space-limited devices and easy integration into various applications.

Wide temperature range

The operating temperature range is -20°C to 70°C, and the storage temperature range is -30°C to 80°C, ensuring stability and reliability under extreme environmental conditions.

SPI interface support

Supports SPI interface, which facilitates quick connection with various controllers and systems, simplifying the product integration process.

Customization options

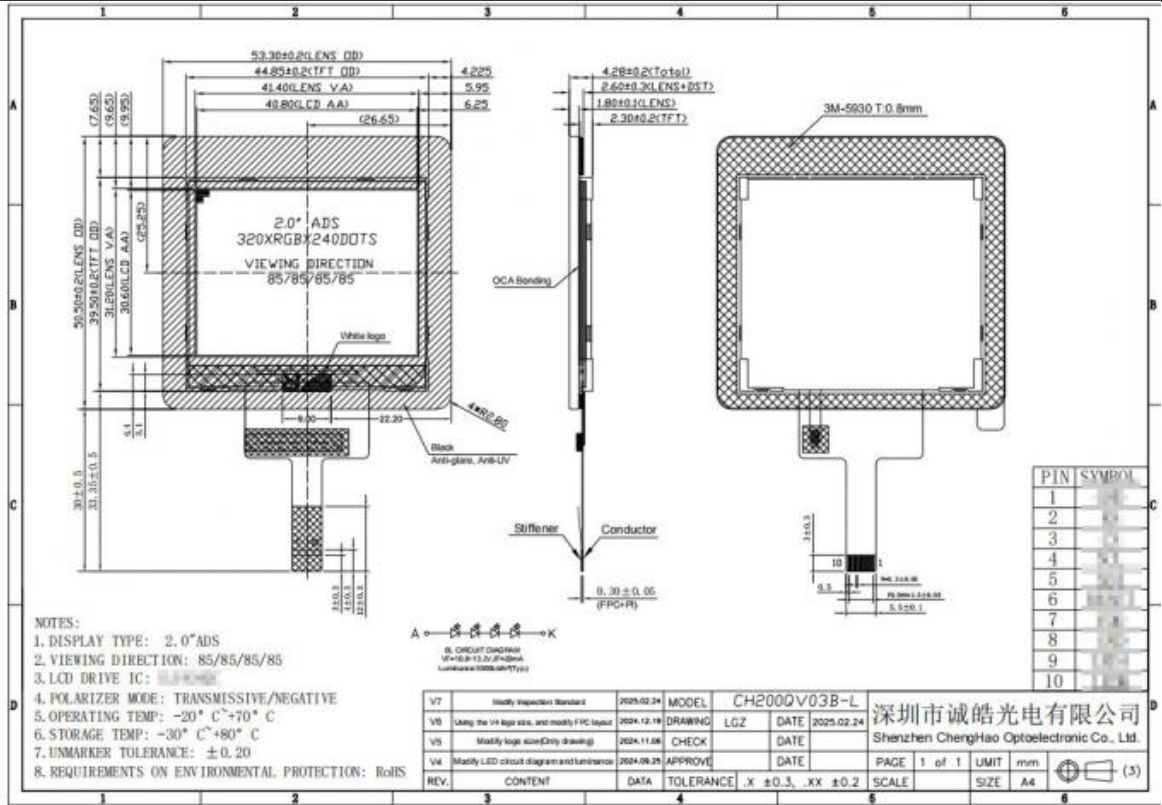
A variety of customization services are provided. Customers can adjust the FPC shape, backlight brightness, LCD interface, etc. according to specific needs to meet the special requirements of different applications.

Multi-industry application

This display module is widely used in multiple industries such as industrial control, medical equipment, smart home, artificial intelligence and IoT devices, with strong adaptability.

Technical Parameters:

Number of dots	320x240
Lcd Type	2" TFT + CTP
Operating Temperature	-20 ~ +70 °C
Brightness	1000 Cd/m2 Luminance
Contrast	800:1
Display Mode	IPS/Transmissive/normally Black
Active Area Size	40.8 X 30.6 Mm
Viewing Direction	85/85/85/85
Module Size	53.3 X 50.5 X 4.28 Mm
Viewing Area Size	41.4 X 31.2 Mm



Applications:

CH200QV03B-L is a high-performance 2-inch TFT LCD display module that can play an important role in multiple industries due to its excellent display effect and wide applicability. The following are the main application areas of this product:

Industrial control: In industrial automation and control systems, CH200QV03B-L can be used to monitor equipment status, display operation interfaces and real-time data. Its high brightness and wide viewing angle characteristics enable operators to clearly read information in different working environments, improving work efficiency and safety. In addition, the module's high and low temperature resistance enables it to operate stably in extreme environments, making it suitable for a variety of industrial equipment.

Medical equipment: CH200QV03B-L is ideal for medical equipment such as heart rate monitors, blood glucose meters and portable ultrasound devices. Its high resolution and high brightness characteristics ensure the clarity and readability of medical images, helping medical staff to better diagnose and monitor. In medical environments, the reliability and durability of display modules are critical, and CH200QV03B-L can meet these requirements.

Smart Home: In smart home products, CH200QV03B-L can be used for smart control panels, display interfaces of home appliances, etc. Its compact size and customization capabilities allow it to be easily integrated into various home devices to enhance the user experience. Whether it is a smart refrigerator, smart coffee machine or home security system, CH200QV03B-L can provide clear visual feedback for easy user operation.

In-vehicle devices: The high brightness and wide temperature range of the module make it an ideal choice for in-vehicle display systems. Whether it is in-vehicle navigation, central control display or rear seat entertainment system, CH200QV03B-L can provide clear visual effects to ensure driving safety and passenger entertainment experience. Its durability and reliability enable it to work properly under various environmental conditions in the car.

IoT devices: With the development of IoT technology, CH200QV03B-L has also been widely used in smart sensors, monitoring equipment and other IoT applications. Its flexible interface and customization options enable it to adapt to different IoT solutions and meet the needs of various applications such as smart home and smart city.

Consumer electronics: In consumer electronics products, such as digital photo frames, portable game consoles, and other small display devices, the high resolution and color performance of the CH200QV03B-L can meet users' high requirements for visual effects. Its compact design makes it suitable for various portable devices to enhance the user experience.

Security identification equipment: The module is also suitable for security identification equipment, such as access control systems and attendance clocking machines. Its clear display and reliable performance can effectively enhance the user experience and system security.

Support and Services:

At Chenghao Optoelectronic, we understand the importance of quality support and service to our customers' success. For the CH200QV03B-L 2-inch TFT LCD display module, we provide a comprehensive range of support and services to ensure that customers get the best experience during use.

Professional technical support

Our technical team consists of experienced engineers who can provide comprehensive technical consultation and support to customers. Whether it is product selection, design integration or troubleshooting, we can provide customers with timely assistance to ensure that the display module can be smoothly integrated into the customer's project.

Quality assurance

All our LCD modules will undergo strict quality inspections before leaving the factory to ensure that each module meets international standards. We follow the ISO9001 and ISO14001 quality management systems to ensure the high quality and environmental protection of our products. Customers can use our products with confidence because we are committed to providing reliable quality assurance.

Customization service

In order to meet the needs of different customers, we provide a variety of customization services. Customers can adjust the FPC shape, backlight brightness, LCD interface, etc. according to specific application requirements.

Sample support

We understand that customers need to evaluate product performance before making a final purchase decision, so we provide sample support. Customers can request samples for testing to ensure that our display modules can meet the specific requirements of their projects. This service enables customers to fully verify the suitability and performance of the product before purchasing on a large scale.

After-sales service

We value customer feedback and provide comprehensive after-sales service. If customers encounter any problems during use, our after-sales team will respond quickly and provide solutions to ensure customer satisfaction and continued performance of the product.

Logistics support

We have established long-term cooperative relationships with many logistics companies and are able to provide customers with efficient transportation services. No matter where the customer is located, we can ensure timely and safe delivery of products.

FAQ:

Q: What is the brand name of this small LCD TFT Screen ?

A: The brand name is Chenghao Optoelectronic.

Q: What is the model number of this small LCD TFT Screen?

A: The model number is CH200QV03B-L.

Q: What certifications does this small LCD TFT Screen have?

A: It is certified with RoHS, CE, and FCC.

Q: What is the minimum order quantity for this small LCD TFT Screen?

A: The minimum order quantity is 100 pieces.

Q: What are the packaging details for this small LCD TFT Screen?

A: All the products are packed in the right way to keep them safe. For small sizes, we use tray + carton, and for bigger sizes, we use foam slot + carton. We also design packages according to customers' requirements.





Shenzhen ChengHao Optoelectronic Co., Ltd.



+86 755-27806536



add@chenghaolcm.com



chenghaolcd.com

7th floor, building C5, Hengfeng Industrial City, Hangcheng street, Bao'an District, Shenzhen