



320x240 Lcd Display 2inch 10 Pins SPI Interface 85/85/85/85 IPS TFT Display

Our Product Introduction

for more products please visit us on chenghaolcd.com

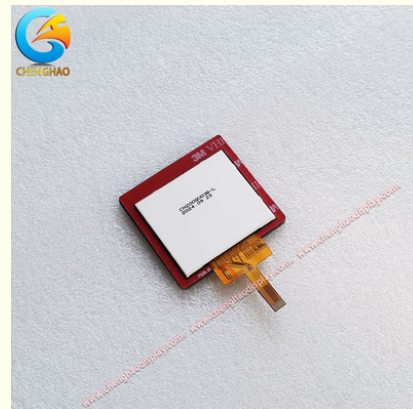
Basic Information

- Brand Name: Chenghao Optoelectronic
- Certification: RoHS CE FCC
- Model Number: CH200QV03B-L
- Minimum Order Quantity: 100 Pcs
- Packaging Details: All The Products Are Packed In Right Way To Keep It Safe. For Small Sizes Of Products We Use Tray + Carton, For Bigger Sizes We Use Foam Slot + Carton. We Also Design Packages According To Customers' Requirements
- Delivery Time: 3~7 Days
- Payment Terms: TT
- Supply Ability: 300K Pcs/month

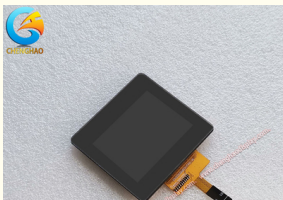


Product Specification

- Module Size: 53.3 X 50.5 X 4.28 Mm
- Storage Temperature: -30 ~ +80 °C
- Display Mode: IPS/Transmissive/normally Black
- Viewing Direction: 85/85/85/85
- Active Area Size: 40.8 X 30.6 Mm
- Brightness: 1000 Cd/m2 Luminance
- Viewing Area Size: 41.4 X 31.2 Mm
- Number Of Dots: 320x240
- Highlight: 2inch Lcd Display,
SPI Interface IPS TFT Display,
10 pins Lcd Display



More Images





Product Description

Product Description:

The CH200QV03B-L is a high-performance 2-inch TFT LCD display module designed and manufactured by Chenghao Optoelectronic. Designed to meet a variety of application requirements, this module is widely used in multiple industries with its excellent display effect and reliable performance. As a company established in 2016, Chenghao Optoelectronic has accumulated rich experience in the research and development, production and sales of small and medium-sized display modules, and is committed to providing customers with high-quality display solutions.

The CH200QV03B-L has an appearance size of 53.3 x 50.5 x 4.28 mm, a viewing area of 44.85 x 39.5 mm and an active area of 40.8 x 30.6 mm. Its design adopts advanced IPS (In-Plane Switching) technology to ensure a wide viewing angle display effect, and the viewing direction meets the standard of 85/85/85/85. This means that no matter from which angle the user is viewed, they can enjoy consistent colors and clear images, which is suitable for application scenarios that require high-quality image display, such as medical equipment, industrial control and smart home.



In terms of functional parameters, the CH200QV03B-L has a resolution of 240x320 pixels, which can provide delicate image display. Its brightness is as high as 1000 cd/m², ensuring that it can still be clearly seen in strong light environments. This high brightness feature makes the module very suitable for outdoor or strong light environments, and users do not need to worry about screen reflection or blur. In addition, the module has an operating temperature range of -20°C to 70°C and a storage temperature range of -30°C to 80°C, ensuring its stability and reliability under extreme environmental conditions.



The CH200QV03B-L adopts an SPI interface, which is convenient for connection with various controllers and systems, simplifying the integration process. This module not only excels in performance, but also takes into account the user's customization needs in design. Chenghao Optoelectronic provides customization services, and customers can adjust the shape and structure of the FPC, modify the backlight brightness, define the LCD interface, and even design a customized touch panel according to their specific needs. This flexibility enables the CH200QV03B-L to be widely used in multiple industries, including industrial control, smart home, medical equipment, instrumentation, artificial intelligence and IoT devices.

In addition, the CH200QV03B-L also excels in safety and durability. Its design takes into account the needs of long-term use, ensuring stable performance in various application environments. Whether in industrial equipment or in the precision operation of medical equipment, the CH200QV03B-L can provide reliable support.

Features:

Compact module size: The CH200QV03B-L has an external size of 53.3 x 50.5 x 4.28 mm, which is suitable for use in space-constrained devices and is easy to integrate into various applications.

High-resolution display: The module has a resolution of 240x320 pixels, which can provide clear and delicate image display to meet high-quality visual needs.

IPS display technology: The IPS (In-Plane Switching) technology is used to ensure a wide viewing angle display effect, with a viewing angle of 85/85/85/85, providing consistent color performance and clarity.

High brightness: The brightness is up to 1000 cd/m², ensuring good readability even in strong light environments, suitable for outdoor and strong light application scenarios.

Wide operating temperature range: The module has an operating temperature range of -20°C to 70°C and a storage temperature range of -30°C to 80°C, ensuring stability and reliability under various extreme environmental conditions.

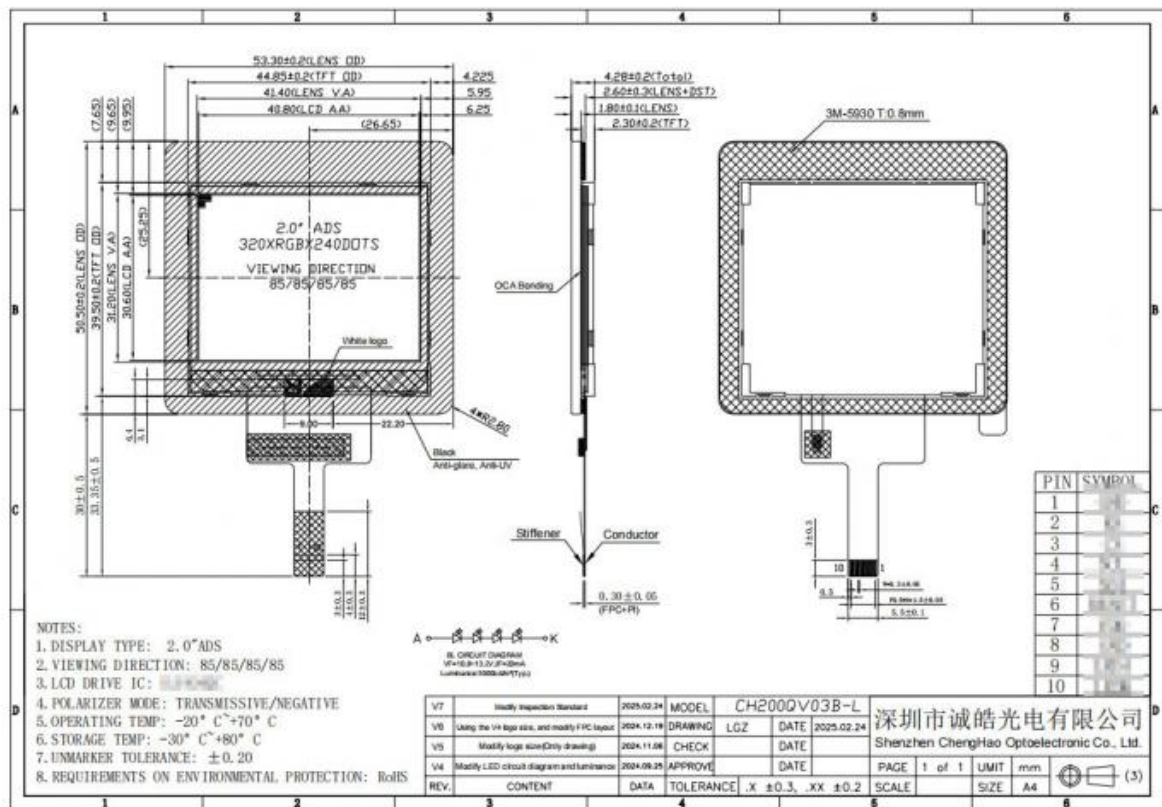
SPI interface support: CH200QV03B-L supports SPI interface, which facilitates quick connection with various controllers and systems and simplifies the integration process.

Customization options: Chenghao Optoelectronic provides a variety of customization services. Customers can adjust FPC shape, backlight brightness, LCD interface, etc. according to specific needs to meet the special requirements of different applications.

Multi-industry applicability: This display module is widely used in multiple industries such as industrial control, medical equipment, smart home, artificial intelligence and IoT devices, and has strong adaptability.

High-quality manufacturing standards: The products strictly follow ISO9001 and ISO14001 standards to ensure the quality and environmental protection of each module and provide customers with reliable product guarantees.

Durability and safety: CH200QV03B-L is designed with long-term use in mind, ensuring stable performance in various application environments, suitable for demanding applications.



Technical Parameters:

Number of dots	320x240
Brightness	1000 Cd/m2 Luminance
Storage Temperature	-30 ~ +80 °C
Lcd Interface	SPI
Operating Temperature	-20 ~ +70 °C
Active Area Size	40.8 X 30.6 Mm
Contrast	800:1
Viewing Direction	85/85/85/85
Module Size	53.3 X 50.5 X 4.28 Mm
Display Mode	IPS/Transmissive/normally Black

Applications:

CH200QV03B-L is a high-performance 2-inch TFT LCD display module that can play an important role in multiple industries due to its excellent display effect and wide applicability. The following are the main application areas of this product:

(1)Industrial control: In industrial automation and control systems, CH200QV03B-L can be used to monitor equipment status, display operation interfaces and real-time data. Its high brightness and wide viewing angle characteristics enable operators to clearly read information in different working environments, improving work efficiency and safety. In addition, the module's high and low temperature resistance enables it to operate stably in extreme environments, making it suitable for a variety of industrial equipment.

(2)Medical equipment: CH200QV03B-L is ideal for medical equipment such as heart rate monitors, blood glucose meters and portable ultrasound devices. Its high resolution and high brightness characteristics ensure the clarity and readability of medical images, helping medical staff to better diagnose and monitor. In medical environments, the reliability and durability of display modules are critical, and CH200QV03B-L can meet these requirements.

(3)Smart Home: In smart home products, CH200QV03B-L can be used for smart control panels, display interfaces of home appliances, etc. Its compact size and customization capabilities allow it to be easily integrated into various home devices to enhance the user experience. Whether it is a smart refrigerator, smart coffee machine or home security system, CH200QV03B-L can provide clear visual feedback for easy user operation.

(4)In-vehicle devices: The high brightness and wide temperature range of the module make it an ideal choice for in-vehicle display systems. Whether it is in-vehicle navigation, central control display or rear seat entertainment system, CH200QV03B-L can provide clear visual effects to ensure driving safety and passenger entertainment experience. Its durability and reliability enable it to work properly under various environmental conditions in the car.

(5)IoT devices: With the development of IoT technology, CH200QV03B-L has also been widely used in smart sensors, monitoring equipment and other IoT applications. Its flexible interface and customization options enable it to adapt to different IoT solutions and meet the needs of various applications such as smart home and smart city.

(6)Consumer electronics: In consumer electronics products, such as digital photo frames, portable game consoles, and other small display devices, the high resolution and color performance of the CH200QV03B-L can meet users' high requirements for visual effects. Its compact design makes it suitable for various portable devices to enhance the user experience.

(7)Security identification equipment: The module is also suitable for security identification equipment, such as access control systems and attendance clocking machines. Its clear display and reliable performance can effectively enhance the user experience and system security.

Packing and Shipping:

At Chenghao Optoelectronic, we attach great importance to the packaging and shipping process of CH200QV03B-L LCD display modules to ensure that the products remain intact during transportation. The following are our detailed instructions on packaging and shipping:

Packing materials

All shipping boxes meet the export hardness standards to ensure that they can withstand external pressure and impact during transportation. We use high-quality cartons and foam materials for packaging to provide additional protection to prevent the display modules from being damaged during transportation.

Lining protection

Each packaging box is filled with foam material to prevent the display from being collided or squeezed during transportation. This lining protection measure can effectively reduce the risk of damage that may occur during transportation and ensure that the product arrives safely in the hands of customers.

Packing method

Our product packaging adopts the method of packing small boxes in large boxes. Each small box contains a certain number of CH200QV03B-L modules, which is easy to manage and transport. This packaging method not only improves transportation efficiency, but also facilitates customers to check and manage when they receive the goods.

Weight and size

The weight of each packaging box does not exceed 3.5 kg, and the specific size will be adjusted according to the standard. This design makes each box more convenient during handling and transportation, reducing the transportation difficulties caused by overweight.

Use of pallets or wooden racks

In order to further ensure the safety of the products during transportation, we will use pallets or wooden racks to fix the goods. This method can effectively prevent the goods from sliding or tilting during transportation, ensuring that each module can arrive at the destination safely.

Customized packaging

If the customer has special packaging requirements, we can also customize the packaging according to the customer's requirements. This includes changing the packaging method, using the transportation method specified by the customer, etc., to meet the specific needs of different customers.

Shipping process

After confirming the order, we will arrange the shipment quickly. All products will undergo careful quality inspection before shipment to ensure that each module meets the quality standards. After shipment, we will provide tracking information so that customers can understand the transportation status of the goods at any time.

FAQ:

Q: What is the brand name of this Small LCD Touch Screen?

A: The brand name is Chenghao Optoelectronic.

Q: What is the model number of this Small LCD Touch Screen?

A: The model number is CH200QV03B-L.

Q: What certifications does this Small LCD Touch Screen have?

A: It is certified with RoHS, CE, and FCC.

Q: What is the minimum order quantity for this Small LCD Touch Screen?

A: The minimum order quantity is 100 pieces.

Q: What are the packaging details for this Small LCD Touch Screen?

A: All the products are packed in a way to keep them safe. For small sizes of products, we use tray + carton, and for bigger sizes, we use foam slot + carton. We also design packages according to customers' requirements.



Shenzhen ChengHao Optoelectronic Co., Ltd.



+86 755-27806536



add@chenghaolcm.com



chenghaolcd.com

7th floor, building C5, Hengfeng Industrial City, Hangcheng street, Bao'an District, Shenzhen