



Industrial Tft Lcd 7 Inch 800x480 Resolution With Capacitive Touch

Our Product Introduction

for more products please visit us on chenghaolcd.com

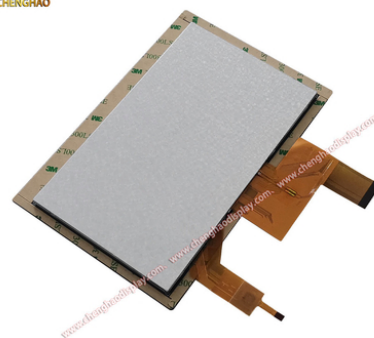
Basic Information

- Brand Name: Chenghao Optoelectronic
- Certification: CE, ISO9001, Rose, SGS
- Model Number: CH700WV03A-CTBA
- Minimum Order Quantity: 100 Pcs
- Packaging Details: All The Products Are Packed In Right Way To Keep It Safe. For Small Sizes Of Products We Use Tray + Carton, For Bigger Sizes We Use Foam Slot + Carton. We Also Design Packages According To Customers' Requirements
- Delivery Time: 3~7 Days
- Payment Terms: T/T, AliPay, PayPal
- Supply Ability: 50000000 Pcs/month

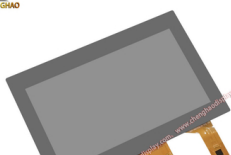


Product Specification

- Display Mode: TN/Transmissive/Normally White
- Storage Temperature: -30 ~ +80°C
- Number Of Dots: 800x480
- Color: 16.7M
- Operating Temperature: -20 ~ +70°C
- Lcd Type: 7" TFT + CTP
- Luminance: 300 Cd/m2
- Touch Type: Capacitive



More Images





Product Description

Product Description:

CH700WV03A-CTBA is a high-performance 7-inch capacitive touch LCD display module with a resolution of 800x480, designed for various application scenarios. The module is manufactured by Shenzhen Chenhao Optoelectronics Technology Co., Ltd., which was established in 2016 and is committed to the research and development, production and sales of small and medium-sized display modules. With its strict ISO9001 quality management system and ISO14001 environmental management system, CH700WV03A-CTBA enjoys a good reputation in the market.

<p>(1) Appearance design and size</p> <p>The dimensions of CH700WV03A-CTBA are 180mm x 119mm x 5.27mm, the visible size of the display area is 164.9mm x 100mm, and the active area is 154.08mm x 85.92mm. The design of the module focuses on thinness and lightness, which is suitable for the needs of modern electronic devices. The module adopts color-active thin-film transistor (TFT) liquid crystal display technology and uses amorphous silicon TFT as a switching element to ensure clear and stable display effects.</p>		
<p>(2) Main functional parameters</p> <p>The main functions of the display module include 12 viewing angle display modes, support for 16.7M color display, and a brightness of up to 300 cd/m², ensuring a high-quality visual experience in a variety of environments. The LCD interface adopts an RGB interface, the thickness of the touch panel is 0.7mm, and the transmittance of the touch glass is not less than 87%. In addition, its touch panel type is capacitive, and the operating voltage is between 2.8V and 3.3V, which can meet the needs of a variety of electronic devices.</p>		
		<p>(3) Environmental adaptability</p> <p>CH700WV03A-CTBA has an operating temperature range of -20°C to +70°C and a storage temperature of -30°C to +80°C, making it suitable for industrial control, smart home, medical equipment and other fields. This wide temperature adaptability ensures its reliability in extreme environments and meets the needs of customers in different application scenarios.</p>

Features:

- (1) High resolution: Provides clear display of 800x480, ensuring detailed presentation of images and text.
- (2) 7-inch touch screen: Suitable for a variety of applications, the size design is easy to integrate into various devices.
- (3) Capacitive touch technology: Supports multi-touch to enhance user interaction experience.
- (4) High color depth: Supports 16.7M color display, providing rich visual effects.
- (5) Excellent brightness: The brightness reaches 300 cd/m², adapting to a variety of lighting environments.

(6) Wide operating temperature range: The operating temperature is -20°C to +70°C, and the storage temperature is -30°C to +80°C, suitable for extreme environments.

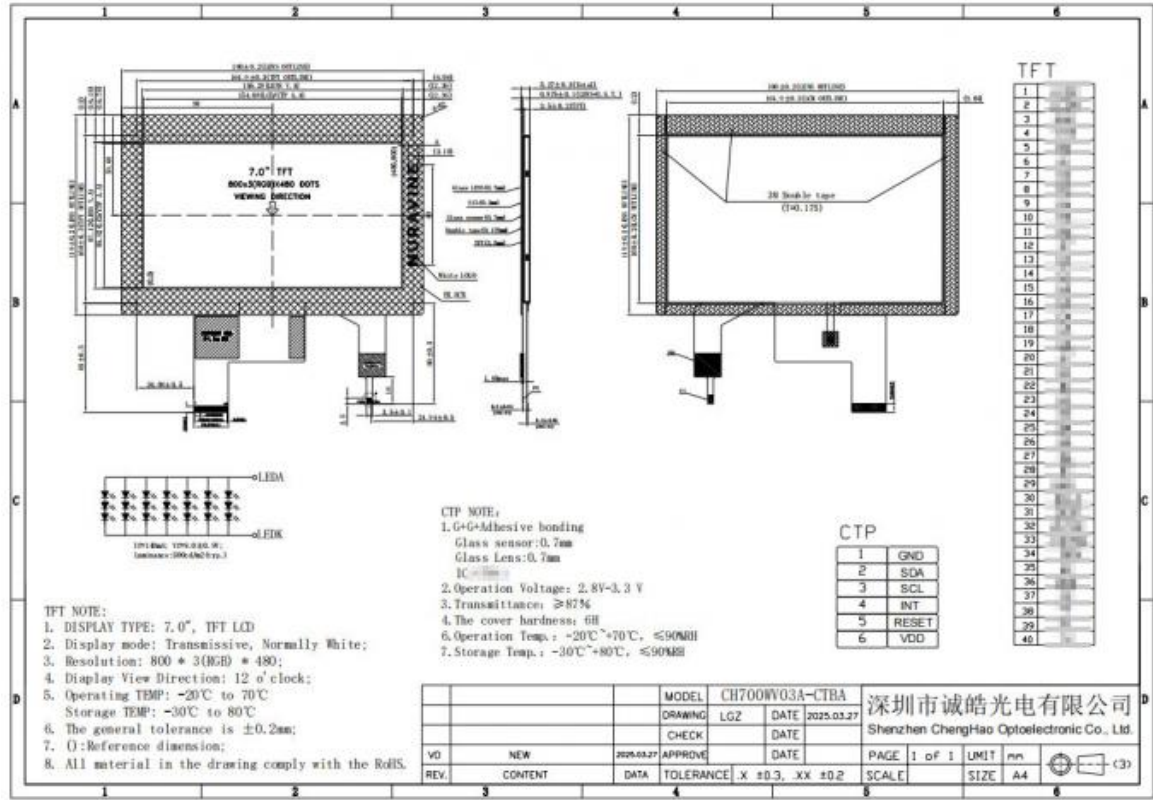
(7) Light and thin design: The module thickness is only 5.27mm, which is easy to install and integrate.

High light transmittance: The light transmittance of the touch glass is ≥87%, ensuring good display effects.

Customizable service: Support customization of module shape, structure and function according to customer needs to meet diverse application requirements.

Technical Parameters:

Operating Temperature	-20 ~ +70°C
Lcd Type	7" TFT + CTP
Module Size	180 * 119 * 5.27 Mm
Touch Interface	IIC
Display Mode	TN/Transmissive/Normally White
Number of dots	800x480
Touch Type	Capacitive
Viewing Direction	12 O'clock
Storage Temperature	-30 ~ +80°C
Lcd Interface	RGB



Applications:

(1)1. Industrial Control

In industrial automation systems, CH700WV03A-CTBA can be used in machine control panels and monitoring equipment to provide real-time data display, operation feedback and human-machine interaction. Its high resolution and wide viewing angle design ensure that operators can clearly view information under various lighting conditions.

(2)Smart Home

This module is suitable for use in smart home control centers, where users can easily manage home devices such as lights, audio and security systems through a touch interface. Its capacitive touch technology provides a smooth operating experience and enhances user convenience and interactivity.

(3)Medical Equipment

CH700WV03A-CTBA also has important applications in medical equipment, such as portable diagnostic instruments and monitoring equipment. Its wide operating temperature range and high brightness characteristics enable it to work stably in different medical environments, ensuring that medical staff obtain clear visual information.

(4)Instrumentation

In various instruments, CH700WV03A-CTBA can be used as a display to provide data reading and status indication. Its excellent display

effect and response speed make it suitable for high-precision measurement and control applications.

(5) Artificial Intelligence and Internet of Things

With the continuous development of the Internet of Things, CH700WV03A-CTBA is widely used in smart devices and artificial intelligence systems. By combining with sensors and processors, the module can display data in real time, support intelligent decision-making and automated operations.

(6) In-vehicle applications

In in-vehicle systems, CH700WV03A-CTBA can be used for navigators, entertainment systems and vehicle information displays. Its high temperature resistance and high light transmittance enable it to provide reliable display effects in various driving environments.

(7) Education and Training

In educational equipment, the module can be used as an interactive teaching tool, supporting multi-touch functions to promote interaction between students and teachers. Through intuitive graphics and interfaces, learning effects and sense of participation are improved.

(8) Electronic products

CH700WV03A-CTBA is also suitable for various consumer electronic products, such as tablets and smartphones. Its thin and light design and high performance can meet the high requirements of modern electronic devices for display quality.

Through the above application scenarios, CH700WV03A-CTBA has demonstrated its adaptability and flexibility in multiple fields, which can meet the needs of different customers and promote technological development and innovation in various industries.

Support and Services:

For the CH700WV03A-CTBA LCD display module, Chenhao Optoelectronics provides comprehensive support and services to ensure that customers get the best experience during use. The following are the main contents of the product support and services:

(1) Technical support

Chenhao Optoelectronics has a professional technical team to provide technical consultation and support to customers at any time. Whether it is product selection, installation and commissioning, or troubleshooting, customers can get timely and professional advice and solutions. Our engineers can provide customized technical guidance based on the customer's specific application scenarios.

(2) After-sales service

To ensure customer satisfaction, Chenhao Optoelectronics provides a complete after-sales service system. If customers encounter any problems during the use of CH700WV03A-CTBA, they can contact us by phone, email or online customer service. Our after-sales team will respond quickly to help customers solve problems and ensure the normal operation of the equipment.

(3) Warranty policy

The CH700WV03A-CTBA module enjoys a certain period of warranty service. During the warranty period, we will provide free repair or replacement services for failures caused by product quality problems. Specific warranty terms and conditions can be confirmed with the customer at the time of purchase to ensure transparency and fairness.

(4) Customized service consultation

For customers who need customized services, Chenhao Optoelectronics provides dedicated consulting services. Customers can contact our sales team to discuss customization needs and obtain professional advice and implementation plans to ensure that the requirements of specific projects are met.

Through these supports and services, Chenhao Optoelectronics is committed to building long-term cooperative relationships with customers, helping customers achieve success, and promoting the smooth progress of various projects. Our goal is to improve customer satisfaction and market competitiveness through high-quality products and services.

FAQ:

A: The brand name of this product is Chenghao Optoelectronic.

Q: What is the model number of this TFT LCD Display?

A: The model number of this TFT LCD Display is CH700WV03A-CTBA.

Q: What certifications does this TFT LCD Display have?

A: This product is certified with CE, ISO9001, Rose, and SGS.

Q: What is the minimum order quantity for this TFT LCD Display?

A: The minimum order quantity for this product is 100 pieces.

Q: What are the available payment terms for purchasing this TFT LCD Display?

A: The available payment terms for this product are T/T, AliPay, and PayPal.



Shenzhen ChengHao Optoelectronic Co., Ltd.



+86 755-27806536



add@chenghaolcm.com



chenghaolcd.com

7th floor, building C5, Hengfeng Industrial City, Hangcheng street, Bao'an District, Shenzhen