



320x240 Color Lcd Screen Panel 2 Inch IPS Tft Display For Portable Devices

Our Product Introduction

for more products please visit us on chenghaolcd.com

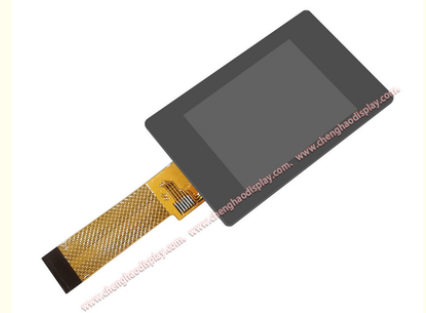
Basic Information

- Brand Name: Chenghao Optoelectronic
- Certification: CE RoHS FCC
- Model Number: CH200QV16A-L
- Minimum Order Quantity: 100 Pcs
- Packaging Details: All The Products Are Packed In Right Way To Keep It Safe. For Small Sizes Of Products We Use Tray + Carton, For Bigger Sizes We Use Foam Slot + Carton. We Also Design Packages According To Customers' Requirements
- Delivery Time: 3~7 Days
- Payment Terms: TT Or Others
- Supply Ability: 50000000 Pcs/month



Product Specification

- Resolution: 240x320 Dots
- Module Size: 40.4 * 62.6 * 3.65 Mm
- Contrast: 800:1
- Operating Temperature: -20 ~ +70°C
- Viewing Area Size: 31.2 * 41.4 Mm
- Display Mode: IPS/Transmissive/Normally Black
- Storage Temperature: -30 ~ +80°C
- Viewing Direction: 80/80/80/80
- Highlight: 320x240 Lcd Screen Panel,
Portable Devices Lcd Screen Panel,
2 Inch IPS Tft Display



More Images





Product Description

Product Description:

The CH200QV16A-L is a high-performance 2-inch TFT LCD display module designed to meet the needs of modern electronic devices. As one of Chenghao Optoelectronic's flagship products, the module combines advanced display technology and flexible application scenarios, and is widely used in industrial control, smart home, medical equipment and other fields.

First of all, the CH200QV16A-L has a display resolution of 240x320 pixels, which can provide clear and delicate visual effects. This resolution allows users to obtain good detail performance when viewing images and texts, and is suitable for application scenarios that require high-precision display. The module uses IPS (In-Plane Switching) technology to maintain color accuracy and consistency at different angles, which is particularly important for multi-user environments, ensuring that there is no distortion when multiple people view the screen at the same time.

In terms of brightness, the CH200QV16A-L has a maximum brightness of 300 cd/m², ensuring good visibility in various low-light conditions. This brightness feature makes the module very suitable for use in indoor environments. In addition, the module's contrast ratio reaches 800:1, further enhancing the clarity and depth of the image and making the visual experience more vivid.

The CH200QV16A-L integrates an efficient driver IC and backlight system, allowing the module to achieve a good balance between power consumption and performance. Its operating temperature range is -20 to +70 degrees Celsius and its storage temperature range is -30 to +80 degrees Celsius. This wide temperature adaptability enables the module to operate stably in environmental conditions with large temperature fluctuations, making it particularly suitable for industrial automation applications.

In terms of connectivity, the CH200QV16A-L uses an SPI interface, which facilitates integration with a variety of controllers and processors. This interface is widely used in modern electronic products, ensuring compatibility with other devices, simplifying the design process, and enabling developers to integrate the module into their products more quickly.

Features:

Display mode: Adopts IPS (In-Plane Switching) technology to provide wider viewing angles and more accurate color performance, ensuring clear visibility at different angles.

Resolution: With a resolution of 240x320, it can display delicate images and texts, suitable for a variety of application scenarios.

Brightness: The maximum brightness is 300 cd/m², ensuring good visibility in low light conditions, suitable for use in indoor environments.

Contrast: The contrast ratio reaches 800:1, which enhances the clarity and depth of the image and makes the visual experience more vivid.

Operating temperature range: Supports operating temperatures from -20 to +70 degrees Celsius, adapts to various environmental conditions, and ensures stable operation of the module under extreme temperatures.

Storage temperature range: The storage temperature range is -30 to +80 degrees Celsius, suitable for long-term storage and transportation.

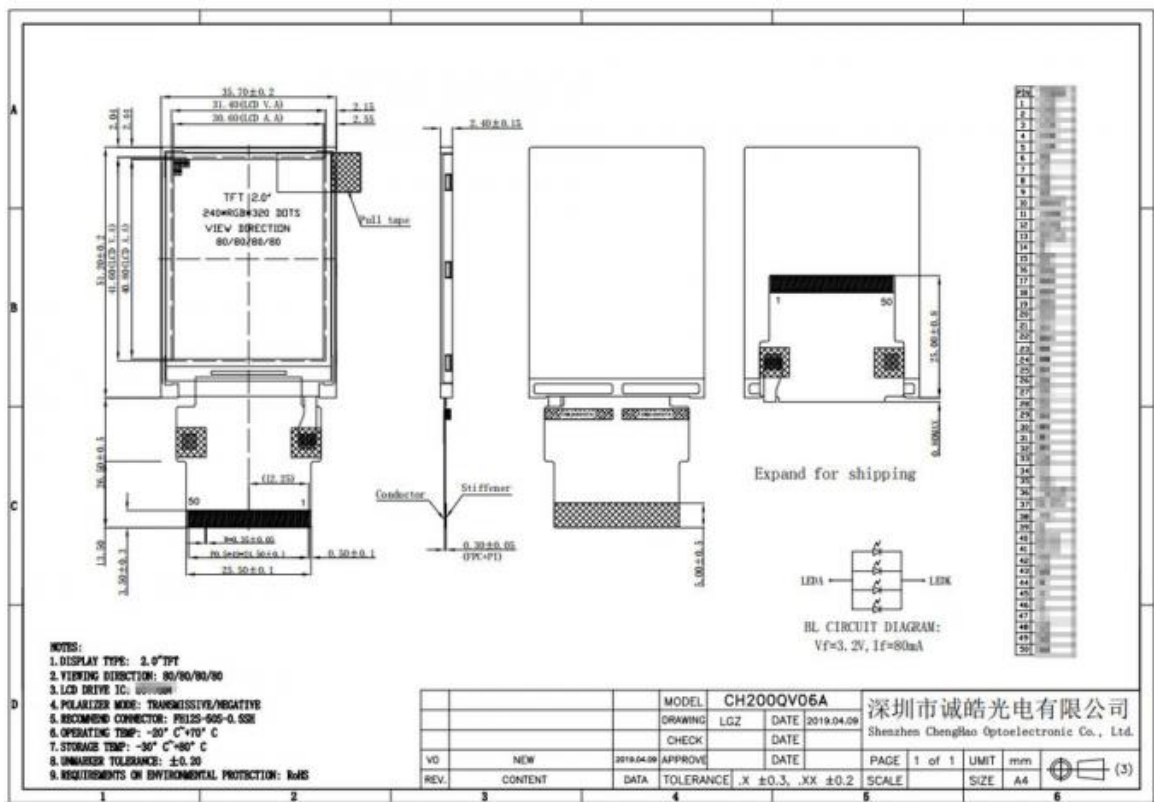
Interface type: Adopts SPI interface, which is easy to integrate with a variety of controllers and processors, simplifying the design process.

Module size: The module size is 40.4 * 62.6 * 3.65 mm, which is suitable for application scenarios with limited space.

Viewable area: The viewable area size is 31.2 * 41.4 mm, providing sufficient display area to meet user needs.

Customization options: Supports a variety of customizations, including backlight brightness, LCD interface definition, and touch panel design to meet the specific needs of different customers.

Through these features, CH200QV16A-L demonstrates its advantages as a high-performance display module that can meet the needs of customers in various industries.



Technical Parameters:

Storage Temperature	-30 ~ +80℃
Resolution	240x320 Dots
Luminance	300 Cd/m2
Active Area Size	30.6 * 40.8 Mm
Viewing Area Size	31.2 * 41.4 Mm
Module Size	40.4 * 62.6 * 3.65 Mm
Contrast	800:1
Operating Temperature	-20 ~ +70℃
Viewing Direction	80/80/80/80
Display Mode	IPS/Transmissive/Normally Black

Applications:

CH200QV16A-L is a powerful 2-inch TFT LCD display module, which is widely used in multiple industries and fields with its superior technical parameters and flexible design. Here are some of the main application areas of this product:

Medical equipment: CH200QV16A-L plays an important role in medical equipment and is often used in portable ultrasound instruments, heart rate monitors and other medical monitoring equipment. Its clear display effect and wide operating temperature range enable medical professionals to monitor the health status of patients in real time.

Industrial control: In industrial automation and control systems, this module can be used for human-machine interface (HMI) to help operators monitor and control equipment in real time. Its high brightness and high contrast characteristics ensure clear visual feedback in various industrial environments and improve work efficiency.

Smart home: CH200QV16A-L can be integrated into smart home products such as smart control panels, home appliance displays, etc. Its compact size and high-quality display effect enable users to conveniently control home devices and enhance the smart home experience.

Consumer electronics: This module is widely used in portable consumer electronics such as e-book readers, portable game consoles, and digital photo frames. Its high resolution and good color performance provide users with excellent visual enjoyment.

Automotive electronics: In vehicle-mounted devices, CH200QV16A-L can be used for navigation systems, vehicle-mounted displays, and instrument panel displays. Its high temperature resistance and wide temperature operating range ensure stable operation under various climatic conditions, providing drivers with reliable information display.

IoT devices: With the development of IoT technology, CH200QV16A-L is also widely used in various IoT devices, such as smart sensors and monitoring equipment. Its flexible interface and customization options enable it to adapt to different application requirements.

Financial payment equipment: This module can be used in POS machines and self-service terminals, providing a user-friendly interface and fast-response display effects, which improves the convenience and security of the payment experience.

Instrumentation: In various measurement and detection equipment, CH200QV16A-L can be used as a display module to provide real-time data display. Its high brightness and high contrast ensure clear visibility under different lighting conditions, making it suitable for use in laboratories and industrial environments.

Through these application areas, CH200QV16A-L demonstrates its wide applicability as a multifunctional display module, which can meet the needs of customers in different industries and provide them with efficient and reliable display solutions.

Customization:

CH200QV16A-L is a highly flexible 2-inch TFT LCD module. Chenghao Optoelectronic provides customers with a variety of customization options to meet the specific needs of different industries and applications. The following are the main customization contents of this product:

Module interface customization: CH200QV16A-L supports customization of multiple interface types. Customers can choose the appropriate interface, such as SPI interface, according to the requirements of their equipment. This flexibility ensures that the module is compatible with a variety of controllers and processors, simplifies the integration process, and improves design efficiency.

Backlight brightness adjustment: Customers can customize the backlight brightness of the module according to the needs of the actual application environment. The backlight brightness of CH200QV16A-L can reach up to 300 cd/m², which is suitable for use under different lighting conditions. By adjusting the backlight brightness, customers can ensure clear visual effects even in strong light environments, especially in outdoor applications.

Touch panel design: The touch panel of this module can be customized according to the specific needs of customers. Customers can choose capacitive or resistive touch solutions and adjust the thickness, hardness and shape of the touch glass according to application requirements. This customization option ensures that the touch panel can meet the usage requirements of specific devices and provide a better user experience.

Functional feature customization: The functions of CH200QV16A-L can be customized according to the customer's actual application scenarios. For example, customers can request to design a display module with anti-glare, sunlight readable, wide viewing angle and high resolution. This flexibility enables the module to adapt to a variety of industry needs, such as medical equipment, industrial control and smart home.

Appearance design customization: Customers can customize the appearance of CH200QV16A-L according to brand image and product design requirements. Different colors, shapes and sizes can be selected to ensure that the module is coordinated with the overall appearance of its device. This personalized appearance design can enhance the market competitiveness of the product.

Packaging customization: In order to meet the logistics needs of customers, the packaging method of CH200QV16A-L can also be customized. Customers can choose different packaging materials and methods to ensure the safety and integrity of the module during transportation. Customized packaging can also include brand logos and product information to enhance the market image of the product.

Small batch customization: Chenghao Optoelectronic supports small batch customization. Customers can choose a smaller minimum order quantity (MOQ) when they need to conduct market testing or small-scale production, which provides customers with greater flexibility and convenience.

Technical support and consulting: During the customization process, Chenghao Optoelectronic provides a full range of technical support and consulting services. Customers can communicate with the company's engineering team to obtain professional advice and solutions to ensure that the customized module can perfectly meet their application requirements.

Through the above customization options, CH200QV16A-L demonstrates its flexibility and adaptability as a high-performance display module, which can meet the specific needs of customers in different industries and provide customers with tailor-made solutions. This customization capability not only enhances the market competitiveness of the product, but also provides customers with more choices and opportunities in the fierce market environment.

FAQ:

Q: What is the brand name of the LCD Display Module?

A: The brand name of the LCD Display Module is Chenghao Optoelectronic.

Q: What is the model number of the LCD Display Module?

A: The model number of the LCD Display Module is CH200QV16A-L.

Q: What certifications does the LCD Display Module have?

A: The LCD Display Module is certified with CE, RoHS, and FCC.

Q: What is the minimum order quantity for the LCD Display Module?

A: The minimum order quantity for the LCD Display Module is 100 pcs.

Q: What are the packaging details for the LCD Display Module?

A: All the products are packed in the right way to keep them safe. For small sizes of products, we use tray + carton, and for bigger sizes, we use foam slot + carton. We also design packages according to customers' requirements.

Q: What is the delivery time for the LCD Display Module?

A: The delivery time for the LCD Display Module is 3~7 days.

Q: What are the payment terms for the LCD Display Module?

A: The payment terms for the LCD Display Module are TT or others.

Q: What is the supply ability of the LCD Display Module?

A: The supply ability of the LCD Display Module is 50000000 pcs/month.



Shenzhen ChengHao Optoelectronic Co., Ltd.



+86 755-27806536



add@chenghaolcm.com



chenghaolcd.com

7th floor, building C5, Hengfeng Industrial City, Hangcheng street, Bao'an District, Shenzhen