



240*320 Spi Lcd Module 24pins 2 Inch IPS TFT Screen With Black Glass Cover

Our Product Introduction

for more products please visit us on chenghaolcd.com

Basic Information

- Brand Name: Chenghao Optoelectronic
- Certification: CE RoHS FCC
- Model Number: CH200QV16A-L
- Minimum Order Quantity: 100 Pcs
- Packaging Details: All The Products Are Packed In Right Way To Keep It Safe. For Small Sizes Of Products We Use Tray + Carton, For Bigger Sizes We Use Foam Slot + Carton. We Also Design Packages According To Customers' Requirements
- Delivery Time: 3~7 Days
- Payment Terms: TT Or Others
- Supply Ability: 50000000 Pcs/month



Product Specification

- Resolution: 240x320 Dots
- Operating Temperature: -20 ~ +70°C
- Display Mode: IPS/Transmissive/Normally Black
- Module Size: 40.4 * 62.6 * 3.65 Mm
- Contrast: 800:1
- Lcd Interface: SPI
- Luminance: 300 Cd/m2
- Viewing Direction: 80/80/80/80
- Highlight: 240*320 Spi Lcd Module , 2 Inch IPS TFT Screen , 24pins Spi Lcd Module



More Images





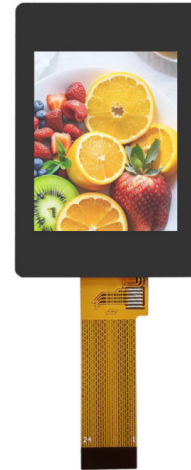
Product Description

Product Description:

The CH200QV16A-L is a high-performance 2-inch TFT LCD display module designed and manufactured by Chenghao Optoelectronic. With its excellent display quality and flexible application characteristics, the module has become an ideal display solution in many industries. Whether in medical equipment, industrial control, smart home or consumer electronics, the CH200QV16A-L can provide a clear and reliable visual experience.

First of all, the CH200QV16A-L has a display resolution of 240x320 pixels, which ensures the delicate performance of images and texts, and is suitable for applications that require high-precision display. The module uses IPS (In-Plane Switching) technology to provide a wider viewing angle and more accurate color performance. This means that users can still get consistent visual effects when viewing the screen at different angles, which is particularly suitable for use in multi-user environments.

In terms of brightness, the CH200QV16A-L has a brightness of 300 cd/m², ensuring good visibility in low-light conditions. This brightness feature makes the module very suitable for use in indoor environments, and users do not need to worry about blurred vision caused by direct sunlight. At the same time, the module's contrast ratio reaches 800:1, further enhancing the clarity and depth of the image, making the visual experience more vivid.



The design of CH200QV16A-L also takes environmental adaptability into consideration, with an operating temperature range of -20 to +70 degrees Celsius and a storage temperature range of -30 to +80 degrees Celsius. This wide temperature adaptability enables the module to operate stably in a variety of environmental conditions, making it particularly suitable for use in industrial automation equipment. Whether in extreme cold or hot environments, the CH200QV16A-L can maintain good performance.

In terms of connectivity, the CH200QV16A-L uses an SPI interface, which facilitates integration with a variety of controllers and processors. This interface is widely used in modern electronic products, ensuring compatibility with other devices, simplifying the design process, and allowing developers to integrate the module into their products more quickly. In addition, the module's size is 40.4 * 62.6 * 3.65 mm, which is suitable for application scenarios with limited space.

The visible area size of CH200QV16A-L is 31.2 * 41.4 mm, providing enough display area to meet user needs. Its active area size is 30.6 * 40.8 mm, ensuring the integrity and readability of the displayed content. The module's simple appearance design is suitable for the appearance style of various devices and can be coordinated with a variety of product designs.

Features:

Display technology: IPS (In-Plane Switching) technology is used to provide a wider viewing angle and more accurate color performance, ensuring good visual effects at different angles.

Resolution: With a resolution of 240x320, it can display images and texts clearly, suitable for a variety of application scenarios.

Brightness: The maximum brightness is 300 cd/m², ensuring good visibility in indoor environments.

Contrast: The contrast ratio reaches 800:1, which enhances the clarity and depth of the image and makes the visual experience more vivid.

Operating temperature range: Supports operating temperatures from -20 to +70 degrees Celsius, adapts to various environmental conditions, and ensures stable operation of the module under extreme temperatures.

Storage temperature range: The storage temperature range is -30 to +80 degrees Celsius, suitable for long-term storage and

transportation.

Interface type: The SPI interface is used to facilitate integration with a variety of controllers and processors, simplifying the design process.

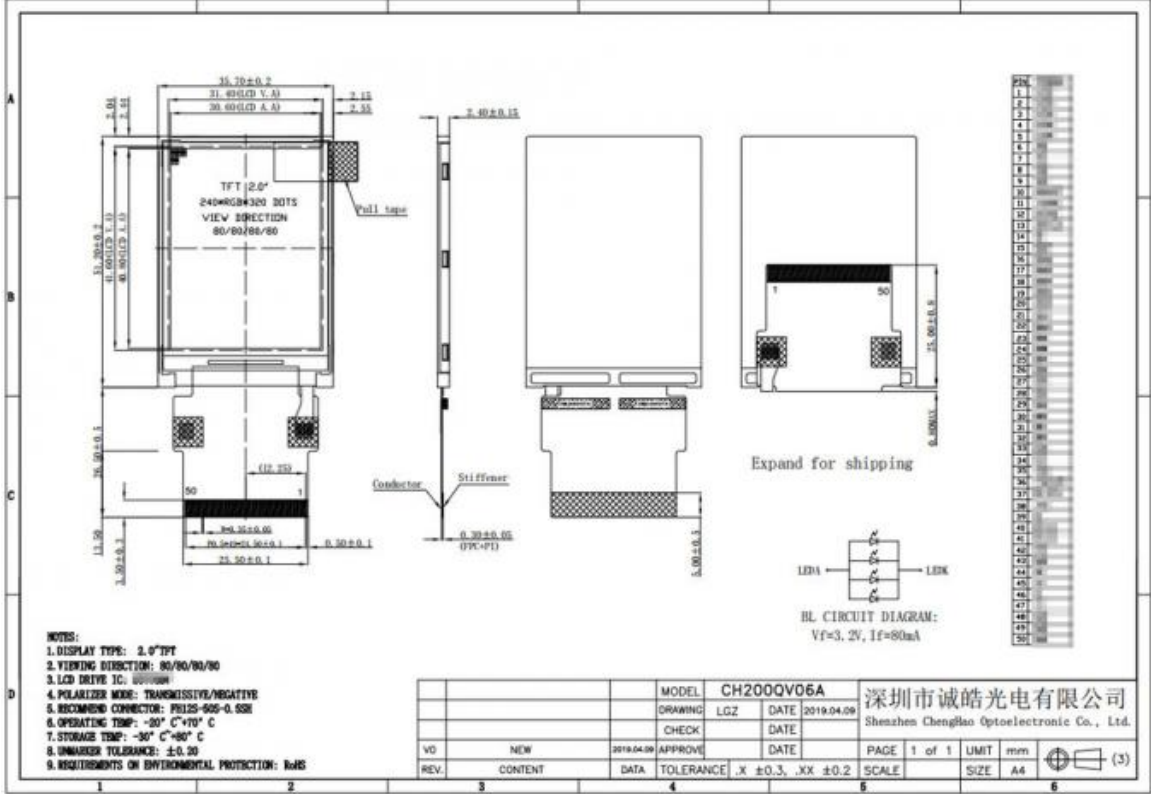
Module size: The module size is 40.4 * 62.6 * 3.65 mm, suitable for application scenarios with limited space.

Viewable area: The viewable area size is 31.2 * 41.4 mm, providing enough display area to meet user needs.

Sample support: Sample support is provided to facilitate customers to test and verify before mass production.

Technical Parameters:

Viewing Area Size	31.2 * 41.4 mm
Viewing Direction	80/80/80/80
Storage Temperature	-30 ~ +80°C
LCD Interface	SPI
Contrast	800:1
Luminance	300 Cd/m2
Resolution	240x320 Dots
Active Area Size	30.6 * 40.8 mm
Operating Temperature	-20 ~ +70°C
Module Size	40.4 * 62.6 * 3.65 mm



Applications:

CH200QV16A-L is a high-performance 2-inch TFT LCD display module. With its excellent technical parameters and flexible design, it is widely used in multiple industries and fields. The following are the main application areas of this product:

Medical equipment: CH200QV16A-L has important applications in medical equipment and is often used in equipment such as portable ultrasound instruments, heart rate monitors and blood glucose meters. Its high resolution and good brightness characteristics ensure that medical staff can clearly read real-time data and improve diagnostic efficiency and accuracy.

Industrial control: This module is widely used in industrial automation systems, especially in human-machine interfaces (HMIs) and industrial control panels. CH200QV16A-L can provide real-time monitoring and control functions to help operators effectively manage production processes and ensure efficient operation of equipment.

Smart home: In the field of smart home, CH200QV16A-L can be used for smart control panels, home appliance displays and security monitoring equipment. Its compact size and high brightness enable users to easily control home devices and enhance the user experience of smart homes.

Consumer electronics: CH200QV16A-L is suitable for a variety of consumer electronics products, such as e-book readers, portable game consoles, and digital photo frames. Its clear display and high contrast allow users to enjoy a high-quality visual experience when using these devices.

Automotive electronics: In the automotive industry, CH200QV16A-L can be used for in-vehicle navigation systems, instrument panel

displays, and rearview mirror displays. Its high temperature resistance and wide operating temperature range ensure that the module can operate stably in various climate conditions, providing drivers with reliable information display.

IoT devices: With the development of IoT technology, CH200QV16A-L is widely used in various smart sensors and monitoring devices. Its flexible interface and customization options enable it to adapt to different application requirements and meet the diversity of IoT devices.

Financial payment equipment: The module is also used in POS machines, self-service terminals, and electronic payment devices. The fast response and stable display of CH200QV16A-L ensure that users can have a smooth experience when conducting transactions, improving the security and convenience of payment.

Instruments: In various measuring and testing equipment, CH200QV16A-L is used as a display module to provide real-time data display. Its high brightness and high contrast ensure clear visibility under different lighting conditions, suitable for use in laboratories and industrial environments.

Security monitoring equipment: In the field of security monitoring, CH200QV16A-L can be used for the display screen of surveillance cameras and the control panel of alarm systems. Its good display effect and durability make it play an important role in security monitoring systems.

Through these application areas, CH200QV16A-L demonstrates its wide applicability as a multi-functional display module, which can meet the needs of customers in different industries and provide them with efficient and reliable display solutions. This module not only improves the user experience of equipment in various industries, but also provides unlimited possibilities for future innovative applications.

Support and Services:

Chenghao Optoelectronic is committed to providing customers with comprehensive support and services to ensure the smooth application and efficient operation of the CH200QV16A-L LCD display module. Our services cover all aspects from pre-sales consultation to after-sales support, aiming to provide customers with the best use experience.

First, in the pre-sales stage, our professional team will provide detailed technical consultation and product recommendations based on the specific needs of customers. Whether it is about the functional parameters, application scenarios or customization options of the module, customers can have in-depth communication with our engineers to find the most suitable solution for their project. We encourage customers to request samples before purchase for actual testing and verification to ensure that the selected products fully meet their needs.

In terms of after-sales service, Chenghao Optoelectronic provides one-year product warranty service for all customers who purchase CH200QV16A-L. During this period, if customers encounter any technical problems during use, our technical support team will provide timely remote online support to help customers solve problems and ensure the normal operation of the equipment. We understand the importance of equipment failure to customer business, so we promise to respond and provide solutions as soon as possible after receiving customer feedback.

In addition, our products are strictly quality inspected and tested before leaving the factory to ensure their performance and reliability. All products meet international standards and have obtained CE and RoHS certification, so customers can use them with confidence. At the same time, we also provide relevant certification documents to meet customers' compliance requirements in different markets.

In order to further improve customer satisfaction, we have also established long-term cooperative relationships with a number of express logistics companies, which can provide customers with efficient logistics services. Due to our large export volume, logistics companies usually give us certain discounts, thereby reducing customers' transportation costs.

Finally, customer feedback is very important to us. We encourage customers to make comments and suggestions during use to help us continuously improve our products and services. We believe that through continuous communication and cooperation, we can provide customers with better products and services and help them succeed in their respective fields.

FAQ:

Q: What is the brand name of the LCD Display Module?

A: The brand name of the LCD Display Module is Chenghao Optoelectronic.

Q: What is the model number of the LCD Display Module?

A: The model number of the LCD Display Module is CH200QV16A-L.

Q: What certifications does the LCD Display Module have?

A: The LCD Display Module is certified with CE, RoHS, and FCC.

Q: What is the minimum order quantity for the LCD Display Module?

A: The minimum order quantity for the LCD Display Module is 100 pieces.

Q: What are the packaging details for the LCD Display Module?

A: All the products are packed in the right way to keep them safe. For small sizes of products, we use tray + carton, and for bigger sizes, we use foam slot + carton. We also design packages according to customers' requirements.



Shenzhen ChengHao Optoelectronic Co., Ltd.



+86 755-27806536



add@chenghaolcm.com



chenghaolcd.com

7th floor, building C5, Hengfeng Industrial City, Hangcheng street, Bao'an District, Shenzhen