



3 Inch Small Touch Screen Display 268x800 Pixels For Scanning Pen

Our Product Introduction

for more products please visit us on chenghaolcd.com

Basic Information

- Brand Name: Chenghao Optoelectronic
- Certification: RoHS CE FCC
- Model Number: CH300FW02A-CT
- Minimum Order Quantity: 100 Pcs
- Packaging Details: All The Products Are Packed In Right Way To Keep It Safe. For Small Sizes Of Products We Use Tray + Carton, For Bigger Sizes We Use Foam Slot + Carton. We Also Design Packages According To Customers' Requirements
- Delivery Time: 3~7 Days
- Payment Terms: TT
- Supply Ability: 300K Pcs/month



Product Specification

- Resolution: 268*800 Dots
- Lcd Type: 3" TFT + CTP
- Display Mode: IPS/Transmissive/Normally Black
- Storage Temperature: -30 ~ +80
- Viewing Direction: 80/80/80/80
- Screen Brightness: 500 Cd/m2 Luminance
- Touch Panel Interface: IIC
- Touch Panel Type: Capacitive
- Highlight: Scanning Pen Small Touch Screen Display , 268x800 Pixels Small Touch Screen Display, 3 Inch Small Touch Screen Display



More Images





Product Description

Product Description:

The CH300FW02A-CT is a cutting-edge 3-inch TFT LCD touch screen module that excels in delivering high-quality visual performance for various applications. With a resolution of 268x800 pixels, this module ensures sharp and detailed images, making it an excellent choice for devices requiring precise display capabilities, such as scanning pens and handheld devices.

Designed with an IPS (In-Plane Switching) technology, the CH300FW02A-CT offers superior color accuracy and wide viewing angles, allowing users to view the display from different positions without compromising image quality. The module's brightness level of 500 cd/m² ensures that the content remains visible even in bright environments, enhancing usability in outdoor or well-lit settings.

The touch panel of the CH300FW02A-CT is capacitive, featuring a glass cover with a thickness of 1.1 mm and a transmittance of ≥90%. This design not only provides a responsive touch experience but also ensures durability and protection against scratches, thanks to its hardness rating of 6H. The touch panel operates on a voltage range of 2.8V to 3.3V and connects via an I2C interface, making integration into various systems straightforward.

The module is built to operate effectively in a wide temperature range, from -20 to +70 degrees Celsius, making it suitable for use in diverse environments, including industrial and outdoor applications. Additionally, it can be stored in temperatures ranging from -30 to +80 degrees Celsius, ensuring reliability under various conditions.

Features:

High Resolution: The CH300FW02A-CT features a resolution of 268x800 pixels, providing clear and detailed visuals suitable for various applications.

IPS Display Technology: This module utilizes IPS (In-Plane Switching) technology, which ensures excellent color accuracy and wide viewing angles, allowing for consistent image quality from different perspectives.

Brightness Level: With a brightness of 500 cd/m², the display remains visible even in bright lighting conditions, enhancing usability in various environments.

Capacitive Touch Panel: The module is equipped with a capacitive touch panel that supports multi-touch functionality, providing an intuitive user interface for enhanced interaction.

Durable Touch Glass: The touch glass cover has a thickness of 1.1 mm and a hardness rating of 6H, offering protection against scratches and ensuring longevity.

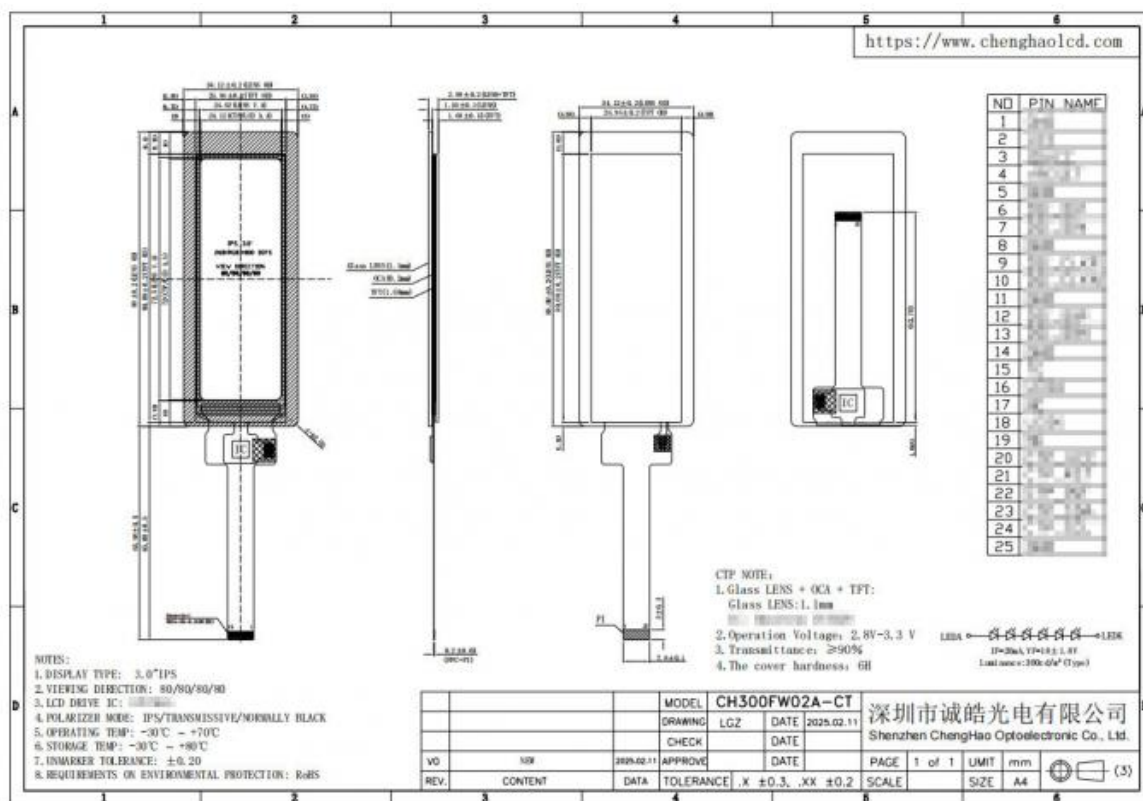
High Transmittance: The touch glass cover boasts a transmittance of ≥90%, allowing for vibrant and clear visuals while maintaining touch sensitivity.

Wide Operating Temperature Range: The CH300FW02A-CT operates effectively in temperatures ranging from -20 to +70 degrees Celsius, making it suitable for a variety of applications in different environments.

Storage Temperature Range: It can be stored in a temperature range of -30 to +80 degrees Celsius, ensuring reliability and performance under various storage conditions.

MIPI LCD Interface: The module features a MIPI interface, facilitating easy integration with other devices and systems.

Customization Options: Chenghao Optoelectronic offers customization services, allowing clients to modify the module to meet specific project requirements, including adjustments to backlight brightness and LCD interface definitions.



Technical Parameters:

Touch Panel Interface	IIC
Display Mode	IPS/Transmissive/Normally Black
Viewing Direction	80/80/80/80
Lcd Type	3" TFT + CTP
Touch Panel Type	Capacitive
Lcd Interface	MIPI
Screen Brightness	500 Cd/m2 Luminance
Resolution	268*800 Dots
Storage Temperature	-30 ~ +80
Operating Temperature	-20 +70°C

Applications:

CH300FW02A-CT is a versatile 3-inch TFT LCD touch screen module that is widely used in multiple industries to meet the needs of different devices. The following are the main application areas of this product:

Medical equipment: Due to its high resolution and good color reproduction ability, CH300FW02A-CT is very suitable for medical equipment such as heart rate monitors and portable ultrasound equipment. Its high and low temperature resistance also enables it to operate stably in various medical environments.

Industrial control: In the field of industrial automation, this module can be used in human-machine interface (HMI) devices to help operators monitor and control machines in real time. Its rugged touch screen design and wide temperature range enable it to work normally in harsh industrial environments.

Smart home: CH300FW02A-CT can be integrated into smart home devices, such as smart control panels, smart refrigerators, and coffee machines. Its intuitive touch operation interface enhances the user experience and makes the control of home devices more convenient.

IoT devices: With the development of IoT technology, CH300FW02A-CT can be used in various smart devices, such as smart sensors and monitoring equipment, to help users achieve real-time monitoring and feedback of data.

In-vehicle equipment: The module is also suitable for in-vehicle display systems such as navigation devices and in-vehicle infotainment systems. Its high brightness and wide viewing angle characteristics ensure clear visibility under different lighting conditions.

Consumer electronics: CH300FW02A-CT is suitable for various consumer electronics products such as digital photo frames and portable game consoles, providing high-quality visual effects and good user interaction experience.

Payment and financial equipment: In payment terminal equipment, such as POS machines and self-service terminals, CH300FW02A-CT can provide fast-response touch operations and enhance users' payment experience.

In summary, CH300FW02A-CT has become an indispensable display solution in various industries with its excellent performance and diverse application scenarios, and can meet customers' needs in different fields.

Customization:

Chenghao Optoelectronic, the manufacturer of the CH300FW02A-CT, emphasizes customization, allowing clients to modify the module according to specific project requirements. This includes adjustments to the backlight brightness, LCD interface definitions, and even the design of the touch panel. Such flexibility ensures that the CH300FW02A-CT can meet the unique needs of different industries, including medical equipment, smart home devices, and IoT applications.

In summary, the CH300FW02A-CT is a versatile and high-performance display solution that combines advanced technology with customization options to cater to a wide range of applications. Its robust features, including high brightness, excellent color reproduction, and durable touch capabilities, make it a reliable choice for manufacturers seeking quality display modules for their products

FAQ:

Q: What is the brand name of this Small LCD Touch Screen product?

A: The brand name of this product is Chenghao Optoelectronic.

Q: What is the model number of this Small LCD Touch Screen product?

A: The model number of this product is CH300FW02A-CT.

Q: What certifications does this Small LCD Touch Screen product have?

A: This product is certified with RoHS, CE, and FCC.

Q: What is the minimum order quantity for this Small LCD Touch Screen product?

A: The minimum order quantity for this product is 100 pieces.

Q: What are the packaging details for this Small LCD Touch Screen product?

A: All the products are packed in the right way to keep them safe. For small sizes of products, we use tray + carton, and for bigger sizes, we use foam slot + carton. We also design packages according to customers' requirements.



Shenzhen ChengHao Optoelectronic Co., Ltd.



+86 755-27806536



add@chenghaolcm.com



chenghaolcd.com

7th floor, building C5, Hengfeng Industrial City, Hangcheng street, Bao'an District, Shenzhen