



268x800 Small LCD Touch Screen 3" IPS TFT MIPI Interface For Portable Devices

Our Product Introduction

for more products please visit us on chenghaolcd.com

Basic Information

- Brand Name: Chenghao Optoelectronic
- Certification: RoHS CE FCC
- Model Number: CH300FW02A-CT
- Minimum Order Quantity: 100 Pcs
- Packaging Details: All The Products Are Packed In Right Way To Keep It Safe. For Small Sizes Of Products We Use Tray + Carton, For Bigger Sizes We Use Foam Slot + Carton. We Also Design Packages According To Customers' Requirements
- Delivery Time: 3~7 Days
- Payment Terms: TT
- Supply Ability: 300K Pcs/month

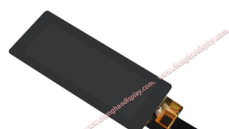


Product Specification

- Lcd Interface: MIPI
- Screen Brightness: 500 Cd/m2 Luminance
- Lcd Type: 3" TFT + CTP
- Touch Panel Type: Capacitive
- Viewing Direction: 80/80/80/80
- Display Mode: IPS/Transmissive/Normally Black
- Touch Panel Interface: IIC
- Operating Temperature: -20 +70°C
- Highlight: **3" Small LCD Touch Screen,
Portable Devices Small LCD Touch Screen,
IPS TFT Small LCD Touch Screen**



More Images





Product Description

Product Description:

The CH300FW02A-CT is an innovative 3-inch TFT LCD touch screen module designed to meet the growing demands of modern electronic devices. With its advanced features and robust performance, this module is ideally suited for a variety of applications, ranging from consumer electronics to industrial equipment.

At the heart of the CH300FW02A-CT is its impressive resolution of 268x800 pixels, which delivers sharp and vibrant images. This high pixel density ensures that users can view intricate details with clarity, making it an excellent choice for applications where visual precision is paramount. The module employs IPS (In-Plane Switching) technology, which not only enhances color reproduction but also provides wide viewing angles. This means that users can enjoy consistent image quality from various perspectives, a crucial factor in devices that require multiple users to view the screen simultaneously.



One of the standout features of the CH300FW02A-CT is its brightness level, rated at 500 cd/m². This high brightness ensures that the display remains visible even in well-lit environments, making it suitable for outdoor applications or settings with strong ambient light. Additionally, the capacitive touch panel integrated into the module allows for a smooth and responsive user experience. With a touch glass cover thickness of 1.1 mm and a transmittance of ≥90%, the display not only maintains excellent visibility but also offers durability against scratches and impacts, thanks to its hardness rating of 6H.



The CH300FW02A-CT is designed to operate effectively within a wide temperature range of -20 to +70 degrees Celsius. This feature makes it versatile for use in various environments, including industrial settings where temperature fluctuations are common. Furthermore, the module can be stored in conditions ranging from -30 to +80 degrees Celsius, ensuring that it remains functional and reliable even under extreme conditions.

Connectivity is another critical aspect of the CH300FW02A-CT. The module utilizes a MIPI (Mobile Industry Processor Interface) LCD interface, which facilitates easy integration with other devices and systems. This interface is widely used in modern electronics, ensuring compatibility with a range of processors and controllers.

Features:

High Resolution Display: The CH300FW02A-CT features a resolution of 268x800 pixels, providing sharp and clear visuals that are essential for applications requiring detailed image representation. This high pixel density ensures that text and graphics are rendered crisply, making it ideal for devices where visual clarity is paramount.

IPS Technology: Utilizing In-Plane Switching (IPS) technology, this module offers superior color accuracy and consistency. IPS displays are known for their ability to maintain color fidelity and brightness levels from various viewing angles, which is crucial for applications where multiple users may view the screen simultaneously.

Brightness Level: With a brightness rating of 500 cd/m², the CH300FW02A-CT ensures that the display remains visible even in bright environments. This feature is particularly beneficial for outdoor applications or in settings with strong ambient light, allowing users to interact with the display without straining their eyes.

Capacitive Touch Panel: The module is equipped with a capacitive touch panel that supports multi-touch functionality. This allows for intuitive user interactions, enabling gestures such as pinch-to-zoom and swipe, which enhance the overall user experience. The touch panel's responsiveness is critical for applications in consumer electronics and industrial controls.

Durable Touch Glass: The touch glass cover of the CH300FW02A-CT has a thickness of 1.1 mm and boasts a hardness rating of 6H. This durability ensures that the display can withstand scratches and impacts, making it suitable for handheld devices and environments where it may be subjected to rough handling.

High Transmittance: The touch glass cover features a transmittance of ≥90%, which allows for vibrant and clear visuals while maintaining excellent touch sensitivity. This high transmittance ensures that the display's brightness and color quality are not compromised, providing users with an optimal viewing experience.

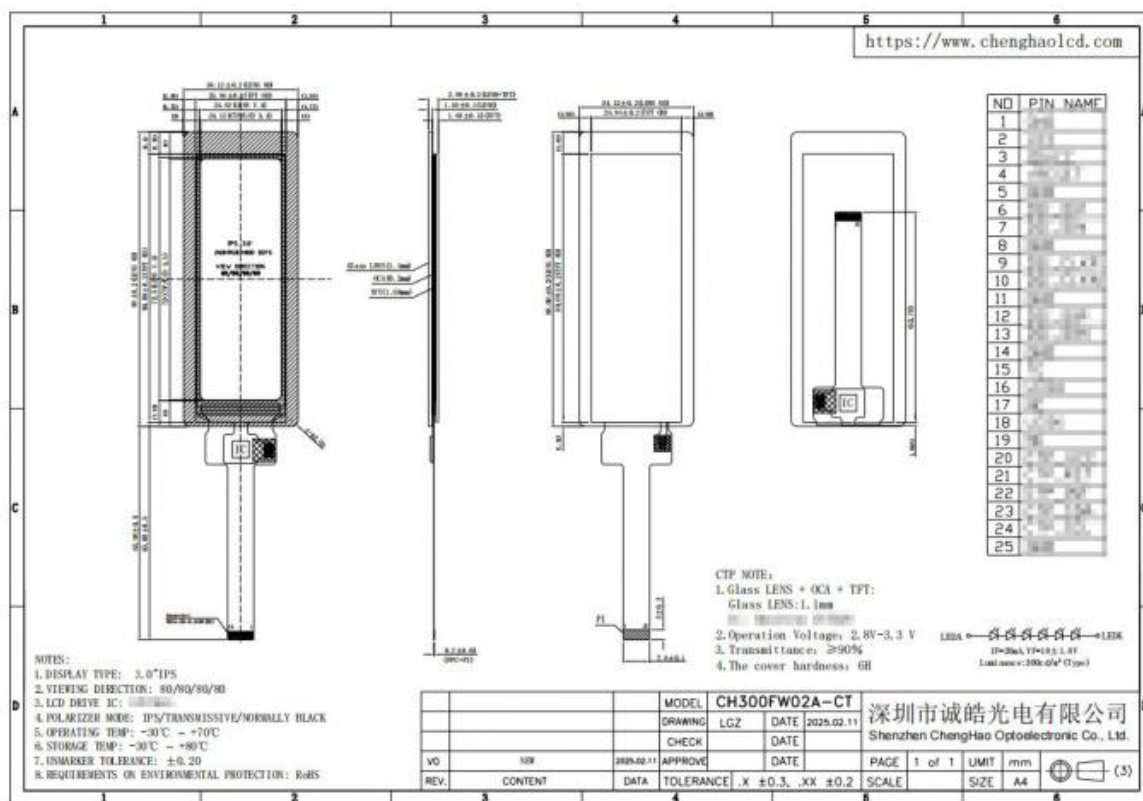
Wide Operating Temperature Range: The CH300FW02A-CT is designed to operate effectively within a temperature range of -20 to +70 degrees Celsius. This wide operating range makes it suitable for various applications, including industrial environments where temperature fluctuations are common.

Storage Temperature Range: The module can be safely stored in temperatures ranging from -30 to +80 degrees Celsius. This feature ensures that the display remains functional and reliable even under extreme storage conditions, providing peace of mind for manufacturers and users alike.

MIPI LCD Interface: The CH300FW02A-CT utilizes a MIPI (Mobile Industry Processor Interface) LCD interface, which facilitates easy integration with various processors and controllers. This interface is widely used in modern electronics, ensuring compatibility and simplifying the design process for manufacturers.

Technical Parameters:

Storage Temperature	-30 ~ +80
Touch Panel Interface	IIC
Resolution	268*800 Dots
Screen Brightness	500 Cd/m ² Luminance
Viewing Direction	80/80/80/80
Lcd Type	3" TFT + CTP
Display Mode	IPS/Transmissive/Normally Black
Lcd Interface	MIPI
Touch Panel Type	Capacitive
Operating Temperature	-20 +70°C



Applications:

CH300FW02A-CT is a high-performance 3-inch TFT LCD touch screen module that is widely used in multiple industries due to its excellent performance and versatility. The following are the main application areas of this product:

- (1)Medical equipment: CH300FW02A-CT is ideal for medical equipment such as portable ultrasound instruments, heart rate monitors, and other diagnostic equipment. The module's high resolution and IPS technology ensure clear and accurate visuals in all lighting conditions, helping medical staff make timely decisions.
- (2)Industrial control: In the field of industrial automation, the module can be integrated into the human-machine interface (HMI) for monitoring and controlling machine equipment. Its high and low temperature resistance enables it to operate stably in harsh industrial environments, ensuring the reliability and safety of the equipment.
- (3)Smart home: CH300FW02A-CT is suitable for smart home devices such as smart control panels, smart lighting systems, and home appliances. Users can easily control home devices through an intuitive touch interface, improving user experience and convenience.
- (4)IoT devices: With the development of IoT technology, CH300FW02A-CT can be used in various smart devices, such as smart sensors, surveillance cameras, and smart home control centers. Its high brightness and wide temperature range enable it to work stably in different environments, supporting real-time data monitoring and feedback.
- (5)Automotive devices: The module is suitable for in-vehicle infotainment systems, navigation devices, and in-vehicle display panels. Its high brightness and wide viewing angle characteristics ensure that drivers and passengers can clearly view information under different lighting conditions, improving driving safety and convenience.
- (6)Consumer electronics: CH300FW02A-CT can be used in a variety of consumer electronics products, such as portable game consoles, digital photo frames, and e-book readers. Its high resolution and touch function enable users to enjoy better visual experience and interactivity when using these devices.
- (7)Financial payment equipment: In payment terminal equipment, such as POS machines and self-service terminals, CH300FW02A-CT can provide fast-response touch operations to enhance users' payment experience. Its durability and high brightness ensure that it can work properly in various environments.
- (8)Instrumentation: This module is also suitable for various instrumentation equipment, such as data acquisition instruments and test equipment. Its high resolution and accurate color reproduction capabilities allow users to clearly view measurement results and data analysis.

In summary, CH300FW02A-CT has become an indispensable display solution in various industries with its excellent performance and diverse application scenarios, and can meet the needs of customers in different fields.

Support and Services:

In today's competitive market, quality customer support and service are essential to the success of a product. As a high-performance 3-inch TFT LCD touch screen module, Chenghao Optoelectronic is committed to providing customers with comprehensive support and services to ensure that customers have the best experience when using this product.

First, Chenghao Optoelectronic provides a one-year product after-sales guarantee for customers who purchase the CH300FW02A-CT. This means that within 12 months after purchase, customers can enjoy the guarantee of product quality and performance, ensuring their peace of mind and confidence during use.

Secondly, the company's technical team provides remote online technical support services for any technical problems encountered by customers during testing or use. Whenever customers encounter problems, the professional technical support team can respond in time, provide solutions, and help customers quickly resume normal use. This round-the-clock technical support ensures that customers will not be affected by technical problems during use.

In addition, as a factory-type supplier, Chenghao Optoelectronic has ISO certification, and all products undergo strict quality inspection

and testing before shipment to ensure that each product meets high standards of quality requirements. The company also provides relevant certifications such as CE and RoHS to meet the compliance needs of the international market and provide customers with additional confidence.

In terms of logistics, Chenghao Optoelectronic maintains long-term cooperation with a number of express logistics companies. Due to the company's large export volume, these express companies are able to provide customers with discounts, thereby reducing transportation costs. In addition, all goods are inspected and tested before shipment to ensure that the products are not damaged during transportation.

Finally, Chenghao Optoelectronic attaches great importance to customer satisfaction and always puts customer needs first. If customers find problems with the product within 30 days of delivery, the company promises to replace it. This customer-centric service concept not only improves customer satisfaction, but also establishes a long-term trust relationship with customers.

In summary, the support and service system of CH300FW02A-CT covers all aspects from after-sales guarantee, technical support to logistics services, ensuring that customers enjoy comprehensive support and help during use. This all-round service not only enhances the value of the product, but also provides a strong guarantee for the success of customers.

FAQ: Q: What is the model number of this Small LCD Touch Screen?

A: The model number is CH300FW02A-CT.

2. **Q: What certifications does this Small LCD Touch Screen have?**

A: This product is RoHS, CE, and FCC certified.

3. **Q: What is the minimum order quantity for this Small LCD Touch Screen?**

A: The minimum order quantity is 100 pieces.

4. **Q: What are the packaging details for this Small LCD Touch Screen?**

A: All the products are packed in the right way to keep them safe. For small sizes, we use tray + carton, and for bigger sizes, we use foam slot + carton. We also design packages according to customers' requirements.

5. **Q: What is the delivery time for this Small LCD Touch Screen?**

A: The delivery time is 3 to 7 days.



Shenzhen ChengHao Optoelectronic Co., Ltd.



+86 755-27806536



add@chenghaolcm.com



chenghaolcd.com

7th floor, building C5, Hengfeng Industrial City, Hangcheng street, Bao'an District, Shenzhen