

3 Inch MIPI Display 268*800 Vertical Screen With High-sensitivity Capacitive Touch

Our Product Introduction

for more products please visit us on chenghaolcd.com

Basic Information

- Brand Name: Chenghao Optoelectronic
- Certification: RoHS CE FCC
- Model Number: CH300FW02A-CT
- Minimum Order Quantity: 100 Pcs
- Packaging Details: All The Products Are Packed In Right Way To Keep It Safe. For Small Sizes Of Products We Use Tray + Carton, For Bigger Sizes We Use Foam Slot + Carton. We Also Design Packages According To Customers' Requirements
- Delivery Time: 3~7 Days
- Payment Terms: TT
- Supply Ability: 300K Pcs/month



Product Specification

- Resolution: 268*800 Dots
- Display Mode: IPS/Transmissive/Normally Black
- Touch Panel Type: Capacitive
- Viewing Direction: 80/80/80/80
- Lcd Interface: MIPI
- Storage Temperature: -30 ~ +80
- Lcd Type: 3" TFT + CTP
- Screen Brightness: 500 Cd/m2 Luminance
- Highlight: High Sensitivity Capacitive Touch MIPI Display, 3 Inch MIPI Display , 268*800 MIPI Display



More Images





Product Description

Product Description:

The CH300FW02A-CT is a high-performance 3-inch TFT LCD touch screen module designed to meet the needs of modern electronic devices. The module combines advanced display technology with user-friendly touch functions and is widely used in multiple fields such as medical, industrial, and consumer electronics.

First of all, the CH300FW02A-CT has a display resolution of 268x800 pixels, providing clear and delicate visual effects. The high resolution allows users to obtain better details when viewing images and texts, especially suitable for application scenarios that require high-precision display. The module uses IPS (In-Plane Switching) technology to ensure that color accuracy and consistency are maintained at different angles. This feature is particularly important in multi-user environments, allowing multiple people to view the screen at the same time without distortion.

The module has a brightness of 500 cd/m², ensuring clear visibility in strong light environments. This high brightness feature makes the CH300FW02A-CT very suitable for outdoor or brightly lit places, and users do not need to worry about blurred vision caused by direct sunlight. In addition, the module's contrast ratio also reaches 800:1, further improving the clarity and depth of the image, making the visual experience more vivid.



CH300FW02A-CT integrates a capacitive touch panel and supports multi-touch function, allowing users to easily slide, zoom and other operations with their fingers. This touch technology not only improves the user's interactive experience, but also makes the operation of the device more intuitive and convenient. The glass thickness of the touch panel is 1.1 mm and the hardness reaches 6H, providing good scratch resistance and impact resistance, ensuring that it is not easily damaged in daily use.

In terms of temperature adaptability, the operating temperature range of CH300FW02A-CT is -20 to +70 degrees Celsius and the storage temperature range is -30 to +80 degrees Celsius. This wide temperature range enables the module to operate stably under various environmental conditions, especially suitable for applications such as industrial automation and outdoor equipment.



In terms of connectivity, CH300FW02A-CT adopts MIPI (Mobile Industry Processor Interface) LCD interface, which is easy to integrate with various processors and controllers. This interface is widely used in modern electronic products, ensuring compatibility with other devices and simplifying the design process.

In addition, Chenghao Optoelectronics provides a wealth of customization options for the CH300FW02A-CT, allowing customers to personalize the module according to specific project requirements. This includes adjusting the backlight brightness, defining the LCD interface, and designing the touch panel. This flexibility allows customers to create the most suitable display solution according to their application needs.

Features:

High resolution: CH300FW02A-CT provides a high resolution of 268x800 pixels, ensuring the clarity of images and texts, allowing users to have a detailed visual experience.

IPS display technology: Adopting IPS (In-Plane Switching) technology, it provides wide viewing angles and excellent color reproduction capabilities, allowing users to enjoy consistent image quality from any viewing angle.

High brightness: The module has a brightness of 500 cd/m², ensuring that it is still clearly visible in strong light environments, suitable for applications in outdoor and bright environments.

Capacitive touch panel: The integrated capacitive touch panel supports multi-touch, providing an intuitive user interaction experience and

Wide operating temperature range: The operating temperature range is -20 to +70 degrees Celsius and the storage temperature range is -30 to +80 degrees Celsius, adapting to various environmental conditions and ensuring the stability of the module.

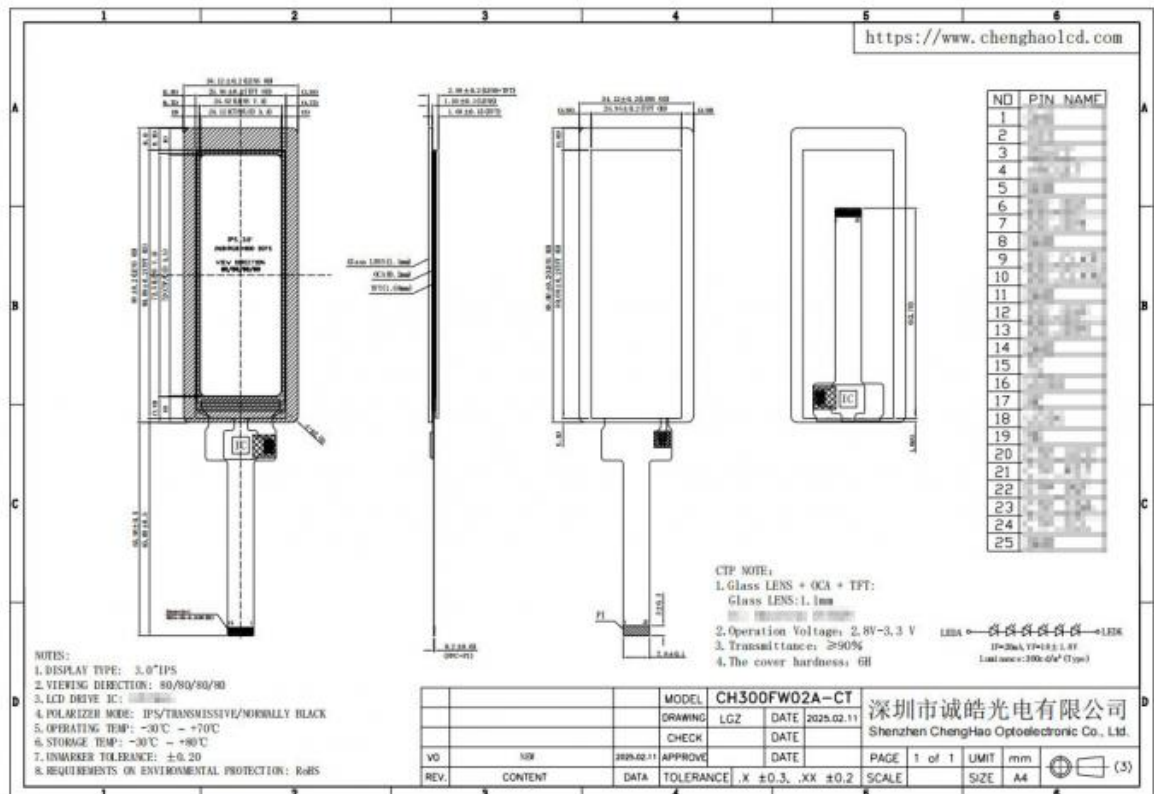
Active matrix display technology: The active matrix display technology is used to improve the response speed and refresh rate, ensure smooth image display, and is suitable for the display of dynamic content.

Low power design: The module has low power consumption characteristics, suitable for battery-powered devices, prolongs the use time of the device, and reduces the frequency of charging.

Reliable manufacturing quality: Chenghao Optoelectronic ensures that all products undergo strict quality inspections before leaving the factory to ensure the performance and reliability of each module.

Technical Parameters:

Display Mode	IPS/Transmissive/Normally Black
Lcd Type	3" TFT + CTP
Touch Panel Interface	IIC
Storage Temperature	-30 ~ +80
Screen Brightness	500 Cd/m2 Luminance
Resolution	268*800 Dots
Viewing Direction	80/80/80/80
Operating Temperature	-20 +70°C
Lcd Interface	MIPI
Touch Panel Type	Capacitive



Applications:

CH300FW02A-CT is a high-performance 3-inch TFT LCD touch screen module, which is widely used in multiple industries with its excellent technical parameters and flexible application characteristics. The following are the main application areas of this product:

Medical equipment: In the medical field, CH300FW02A-CT can be used in various medical instruments, such as portable ultrasound equipment, heart rate monitors, and patient monitoring systems. Its high resolution and IPS technology ensure that doctors and caregivers can clearly view important vital signs and diagnostic information, thereby improving the accuracy and efficiency of medical decision-making.

Industrial automation: This module plays an important role in industrial control systems and is often used in human-machine interfaces (HMI) and control panels. The high and low temperature resistance of CH300FW02A-CT enables it to operate stably in harsh industrial environments, helping operators to monitor the operating status and control of equipment in real time.

Smart home: With the development of smart home technology, CH300FW02A-CT can be integrated into smart home control panels, allowing users to easily control home devices such as smart lights, temperature control systems, and security equipment through the touch screen. This intuitive user interface enhances the convenience and user experience of home automation.

Consumer electronics: In consumer electronics, CH300FW02A-CT is suitable for devices such as portable game consoles, e-book readers, and digital photo frames. Its high brightness and high resolution enable users to get excellent visual effects when watching videos and pictures, enhancing the product's appeal.

Financial payment equipment: In the financial industry, CH300FW02A-CT can be used in POS machines, self-service terminals, and automatic teller machines (ATMs). Its fast-response touch function and high-brightness display ensure that users can have a smooth experience when conducting transactions, while improving the security and efficiency of transactions.

IoT devices: With the popularization of IoT technology, CH300FW02A-CT is widely used in devices such as smart sensors, surveillance cameras, and smart control centers. Its stable performance and high-brightness display enable it to work effectively in a variety of environments, supporting real-time data monitoring and feedback.

Automotive applications: The module is also suitable for in-vehicle infotainment systems, navigation devices, and dashboard displays. The high brightness and wide viewing angle of the CH300FW02A-CT ensure that drivers and passengers can clearly view information under different lighting conditions, improving driving safety and convenience.

Robotics: In service robots and industrial robots, the CH300FW02A-CT can be used as a human-machine interface to provide real-time feedback and control functions. Its durability and high response speed enable it to operate stably in dynamic environments, ensuring that the robot can effectively interact with users.

Smart Retail: In smart retail environments, the CH300FW02A-CT can be used in self-service checkout machines and information inquiry terminals. Its intuitive touch interface and high brightness display can attract customers and provide a good user experience, improving retail efficiency.

Instrumentation: The module is also suitable for various instrumentation equipment, such as data acquisition instruments and test equipment. Its high resolution and accurate color reproduction capabilities enable users to clearly view measurement results and data analysis.

In summary, with its excellent performance and diverse application scenarios, the CH300FW02A-CT has become an indispensable display solution in various industries, meeting the needs of customers in different fields.

Customization:

CH300FW02A-CT is a flexible and powerful 3-inch TFT LCD touch screen module. Chenghao Optoelectronic provides customers with a variety of customization options to meet the needs of different application scenarios. The following are the main customization contents of this product:

Module interface customization: CH300FW02A-CT supports customization of multiple interface types, including MIPI interface.

Customers can choose the appropriate interface type according to their specific project needs to be compatible with different controllers and processors. This flexibility allows the module to be easily integrated into existing systems, simplifying the design and development process.

Backlight brightness customization: Customers can customize the backlight brightness according to the needs of the application environment. The backlight brightness of CH300FW02A-CT can reach up to 500 cd/m², suitable for use in different lighting conditions. By adjusting the backlight brightness, customers can ensure the best visual effect in various environments, especially in strong light or dark light environments.

Touch panel design: The touch panel of CH300FW02A-CT can also be customized according to customer requirements. Customers can choose between capacitive or resistive touch solutions and adjust the thickness, hardness, and shape of the touch glass to suit their application needs. This customization option ensures that the touch panel can meet the requirements of specific devices and provide a better user experience.

Functional customization: The functions of the CH300FW02A-CT can be customized according to the customer's actual application scenario. For example, customers can request a display module with anti-glare, sunlight readable, wide viewing angle, and high resolution. These functional customizations can meet the needs of specific industries, such as use in outdoor equipment or industrial control systems.

Appearance design customization: The appearance design of the CH300FW02A-CT can also be customized according to the customer's brand image and product design requirements. Customers can choose different colors, shapes, and sizes to ensure that the module is consistent with the overall appearance of their device. This personalized appearance design can enhance the market competitiveness of the product.

Packaging customization: In order to meet the customer's logistics needs, the packaging method of the CH300FW02A-CT can also be customized. Customers can choose different packaging materials and methods to ensure the safety and integrity of the module during transportation. Customized packaging can also include brand logos and product information to enhance the product's market image.

Small batch customization: Chenghao Optoelectronic supports small batch customization. Customers can choose a smaller minimum order quantity (MOQ) when they need to conduct market testing or small-scale production, which provides customers with greater flexibility and convenience.

Technical support and consulting: During the customization process, Chenghao Optoelectronic provides a full range of technical support and consulting services. Customers can communicate with the company's engineering team to obtain professional advice and solutions to ensure that the customized module can perfectly meet their application requirements.

Through the above customization options, CH300FW02A-CT demonstrates its flexibility and adaptability as a high-performance display module, which can meet the specific needs of customers in different industries and provide customers with tailor-made solutions.

FAQ:

Q: What is the brand name of this Small LCD Touch Screen?

A: The brand name is Chenghao Optoelectronic.

Q: What is the model number of this Small LCD Touch Screen?

A: The model number is CH300FW02A-CT.

Q: What certifications does this Small LCD Touch Screen have?

A: This product is certified with RoHS, CE, and FCC.

Q: What is the minimum order quantity for this Small LCD Touch Screen?

A: The minimum order quantity is 100 pcs.

Q: What are the packaging details for this Small LCD Touch Screen?

A: All the products are packed in the right way to keep it safe. For small sizes of products, we use tray + carton, for bigger sizes we use foam slot + carton. We also design packages according to customers' requirements.



Shenzhen ChengHao Optoelectronic Co., Ltd.



+86 755-27806536



add@chenghaolcm.com



chenghaolcd.com

7th floor, building C5, Hengfeng Industrial City, Hangcheng street, Bao'an District, Shenzhen