



## Full Viewing Angle IPS LCD Display 1024x600 7 inch tft Module with 800 High Contrast

### Our Product Introduction

for more products please visit us on [chenghaolcd.com](http://chenghaolcd.com)

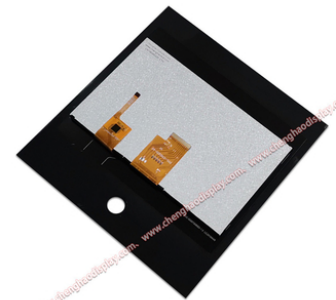
#### Basic Information

- Brand Name: Chenghao Optoelectronic
- Certification: CE RoHS FCC
- Model Number: CH700WS02D-CTH
- Minimum Order Quantity: 100 Pcs
- Packaging Details: All The Products Are Packed In Right Way To Keep It Safe. For Small Sizes Of Products We Use Tray + Carton, For Bigger Sizes We Use Foam Slot + Carton. We Also Design Packages According To Customers' Requirements
- Delivery Time: 3~7 Days
- Payment Terms: TT Or Others
- Supply Ability: 50000000 Pcs/month

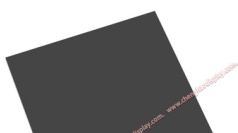


#### Product Specification

- Storage Temperature: -30 ~ +80°C
- Contrast: 800:1
- Viewing Direction: 80/80/80
- Resolution: 1024x600 Dots
- Touch Panel Interface: IIC
- Luminance: 1000 Cd/m2
- Touch Panel Type: Capacitive
- Color: 16.7M
- Highlight: 1024x600 IPS LCD Display ,  
800 High Contrast IPS LCD Display ,  
7 inch IPS LCD Display



#### More Images

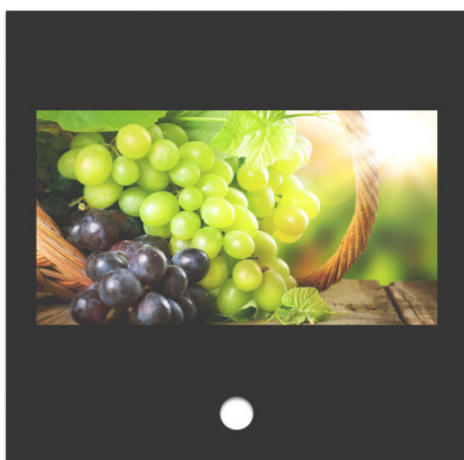




## Product Description

### Product Description:

CH700WS02D-CTH is a high-performance 7-inch TFT LCD display module designed to meet the needs of modern electronic devices. This display module uses advanced IPS (In-Plane Switching) technology and has a resolution of 1024x600, ensuring that users can get a clear and vivid visual experience in various usage scenarios. Whether in industrial control, medical equipment or smart home applications, CH700WS02D-CTH can provide excellent display effects to meet the diverse needs of users.



#### 1. Display performance

The display performance of CH700WS02D-CTH is one of its biggest highlights. With a resolution of 1024x600 pixels, it can present delicate images and text, and is suitable for occasions that require high-precision display. The application of IPS technology enables the module to maintain good color performance and contrast at different viewing angles, avoiding the color distortion and viewing angle limitation problems common in traditional LCD displays. This feature makes CH700WS02D-CTH perform well in multi-user environments, suitable for conference rooms, education and training and other occasions.

In addition, the CH700WS02D-CTH has a brightness of up to 1000 cd/m<sup>2</sup>, ensuring clear visibility even under strong sunlight. This brightness level makes the module ideal for outdoor applications such as billboards, public information displays, etc., where users can easily read the screen content without worrying about interference from sunlight.

#### 2. Touch function

The module is equipped with a capacitive touch panel and supports multi-touch, which enhances the user's interactive experience. Capacitive touch technology can provide higher sensitivity and faster response speed, and users can operate it through simple gestures such as sliding, zooming and rotating. This intuitive operation method makes the CH700WS02D-CTH widely used in smart home control panels, medical equipment and industrial automation systems.



The design of the touch panel not only takes into account the user's operational convenience, but also focuses on durability. The module's touch glass is 1.1 mm thick and has a hardness of 6H, which has good scratch resistance and is suitable for frequently used environments. This feature ensures that the CH700WS02D-CTH can maintain a good user experience in various application scenarios.

#### 3. Working environment adaptability

The operating temperature range of CH700WS02D-CTH is -20 to +70 degrees Celsius, adapting to a variety of environmental conditions. Whether in cold winter or hot summer, the module can maintain efficient working state, ensuring the reliability and stability of the equipment. This feature makes CH700WS02D-CTH very suitable for industrial environments, outdoor equipment and other applications that need to work in harsh conditions.

In addition, CH700WS02D-CTH also has high color saturation, supports 16.7M color display, and can present rich colors. This feature makes the module excel in applications that require high-quality image display, such as medical imaging, advertising display, and digital signage. Users can enjoy vivid and realistic color effects and enhance the visual experience.

### Features:

**High-resolution display:** The CH700WS02D-CTH module provides a high-definition resolution of 1024x600, ensuring clear image details and suitable for a variety of application scenarios.

**IPS display technology:** Adopting IPS (plane switching) technology, it provides a wide viewing angle, so users can watch from different angles without distortion, ensuring consistent image quality.

**High brightness:** The module brightness reaches 1000 cd/m<sup>2</sup>, which can maintain good readability in strong light environments and is suitable for outdoor use.

**Capacitive touch panel:** Equipped with a highly sensitive capacitive touch panel, it supports multi-touch, enhances the user interaction experience, and is suitable for modern smart devices.

**Durable touch glass:** The touch glass is 1.1 mm thick and has a hardness of 6H, with good scratch resistance, suitable for frequently used environments.

Wide temperature operating range: The operating temperature range is -20 to +70 degrees Celsius, adapting to a variety of environmental conditions, ensuring the normal operation of the module under extreme temperatures.

High color saturation: Supports 16.7M color display, which can present rich colors and is suitable for applications requiring high-quality images.

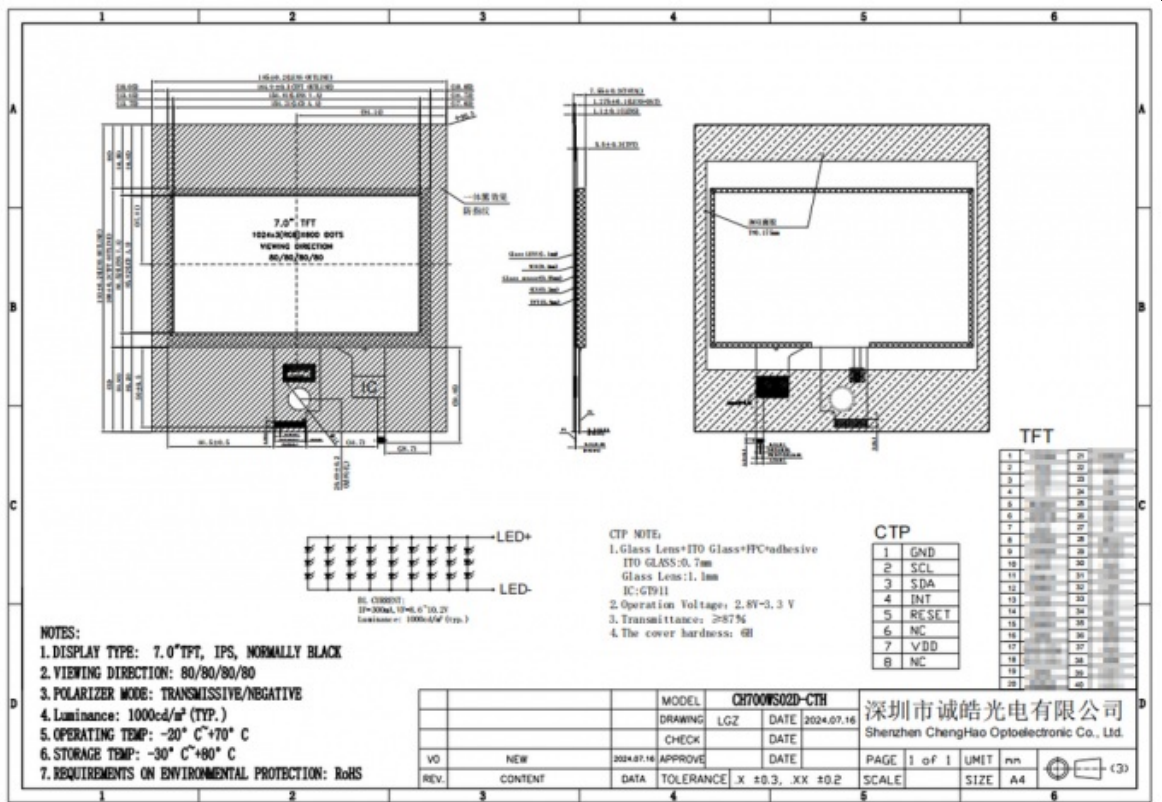
Compact design: The module size is 185 x 193 x 7.55 mm, compact design, easy to integrate into various devices, suitable for space-limited applications.

Flexible customization options: Provide a variety of customization services, including adjustment of FPC shape, backlight brightness and interface type to meet customers' specific needs.

Multiple application fields: Suitable for industrial control, medical equipment, smart home, vehicle-mounted equipment and other fields, showing a wide range of applicability.

Technical Parameters:

Viewing Direction	80/80/80/80
Touch Panel Interface	IIC
Color	16.7M
Operating Temperature	-20 ~ +70°C
Touch Panel Type	Capacitive
Display Mode	IPS/Transmissive/Normally Black
Storage Temperature	-30 ~ +80°C
Contrast	800:1
Resolution	1024x600 Dots
Luminance	1000 Cd/m2



Applications:

The CH700WS02D-CTH display module is widely used in multiple industries and fields due to its excellent performance and versatility. The following are the main application scenarios of this product:

Industrial control: In industrial automation and control systems, CH700WS02D-CTH can be used as a human-machine interface (HMI) to help operators monitor and control production equipment in real time. Its high resolution and wide viewing angle characteristics enable operators to clearly view the equipment status and operation interface, thereby improving production efficiency and safety.

Medical equipment: This module is also widely used in the medical industry and can be integrated into various medical instruments, such as heart rate monitors, ultrasonic equipment, and blood glucose monitors. The high brightness and clear display capabilities of CH700WS02D-CTH enable medical staff to accurately read important physiological data and support rapid diagnosis and monitoring.

Smart home: In the field of smart home, CH700WS02D-CTH can be used for smart control panels, home appliance displays, and home security systems. Users can easily control home devices such as smart lights, thermostats, and security systems through the touch screen, improving the convenience and comfort of life.

In-vehicle display: In the automotive industry, CH700WS02D-CTH can be used in in-vehicle navigation systems and central control displays to provide real-time navigation information, vehicle status, and entertainment system control. Its high brightness and wide viewing angle characteristics ensure that drivers can clearly view information under different lighting conditions, improving driving safety.

IoT devices: The module performs well in IoT applications, supports data acquisition and real-time display, and is suitable for scenarios

such as smart cities and smart agriculture. CH700WS02D-CTH can connect with other devices to form an intelligent ecosystem, helping users achieve more efficient resource management and data monitoring.

Consumer electronics: In consumer electronics products such as digital photo frames, portable game consoles, and smart watches, CH700WS02D-CTH can provide high-quality image display to meet users' high requirements for visual effects. Its thin and light design makes it suitable for a variety of portable applications and enhances user experience.

Financial payment terminals: The module can also be used in POS machines and other financial transaction devices, providing a friendly user interface and reliable operation experience to ensure the smooth conduct of transactions. High brightness and touch function allow users to easily operate in various environments and improve payment efficiency.

Instruments: Among various types of measuring and testing instruments, CH700WS02D-CTH can provide clear data display to help users make accurate measurements and analysis, suitable for laboratory and industrial applications. Its high resolution and wide viewing angle characteristics make data visualization more intuitive.

Through these application areas, the CH700WS02D-CTH display module demonstrates its wide applicability and flexibility, which can meet the needs of different industries and provide customers with high-quality display solutions. Whether in industry, medical, smart home or other fields, CH700WS02D-CTH will be your ideal display choice.

## FAQ:

**Q: What is the brand name of the LCD Display Module?**

A: The brand name of the LCD Display Module is Chenghao Optoelectronic.

**Q: What is the model number of the LCD Display Module?**

A: The model number of the LCD Display Module is CH700WS02D-CTH.

**Q: What certifications does the LCD Display Module have?**

A: The LCD Display Module is certified with CE, RoHS, and FCC.

**Q: What is the minimum order quantity for the LCD Display Module?**

A: The minimum order quantity for the LCD Display Module is 100 pieces.

**Q: What are the packaging details for the LCD Display Module?**

A: All the products are packed in the right way to keep them safe. For small sizes of products, we use tray + carton, and for bigger sizes, we use foam slot + carton. We also design packages according to customers' requirements.

**Q: What is the delivery time for the LCD Display Module?**

A: The delivery time for the LCD Display Module is 3 to 7 days.

**Q: What are the payment terms for purchasing the LCD Display Module?**

A: The payment terms for purchasing the LCD Display Module are TT or other methods.

**Q: What is the supply ability of the LCD Display Module?**

A: The supply ability of the LCD Display Module is 50,000,000 pieces per month.



**Shenzhen ChengHao Optoelectronic Co., Ltd.**



+86 755-27806536



add@chenghaolcm.com



chenghaolcd.com

7th floor, building C5, Hengfeng Industrial City, Hangcheng street, Bao'an District, Shenzhen