



## Sunlight Readable Capacitive Lcd Touch screen 7" 1024x600 for Various Industrial Environments

### Our Product Introduction

for more products please visit us on [chenghaolcd.com](http://chenghaolcd.com)

#### Basic Information

- Brand Name: Chenghao Optoelectronic
- Certification: CE RoHS FCC
- Model Number: CH700WS02D-CTH
- Minimum Order Quantity: 100 Pcs
- Packaging Details: All The Products Are Packed In Right Way To Keep It Safe. For Small Sizes Of Products We Use Tray + Carton, For Bigger Sizes We Use Foam Slot + Carton. We Also Design Packages According To Customers' Requirements
- Delivery Time: 3~7 Days
- Payment Terms: TT Or Others
- Supply Ability: 50000000 Pcs/month



#### Product Specification

- Viewing Direction: 80/80/80/80
- Color: 16.7M
- Resolution: 1024x600 Dots
- Touch Panel Interface: IIC
- Luminance: 1000 Cd/m2
- Touch Panel Type: Capacitive
- Display Mode: IPS/Transmissive/Normally Black
- Contrast: 800:1
- Highlight: Sunlight Readable Capacitive Lcd Touch screen , 1024x600 Capacitive Lcd Touch screen, 7" Capacitive Lcd Touch screen





#### More Images





## Product Description

### Product Description:

<p>The CH700WS02D-CTH is a high-performance 7-inch TFT LCD module designed to meet the needs of modern electronic devices. With a resolution of 1024x600, the module uses IPS (In-Plane Switching) technology to ensure clear viewing at all angles. Whether viewed from the side, above or below, users can enjoy consistent image quality, avoiding the color distortion and contrast loss common to traditional LCDs. This wide viewing angle makes the CH700WS02D-CTH ideal for applications that require multiple people to watch at the same time, such as conference rooms, public displays and educational equipment.</p>		
<p>With a brightness of up to 1000 cd/m<sup>2</sup>, the module is suitable for use in direct sunlight environments, ensuring that users can clearly read the screen content outdoors. This brightness level enables the CH700WS02D-CTH to maintain good readability under strong light conditions and is widely used in industrial control, medical equipment, automotive displays and smart homes. In outdoor applications, users do not need to worry about interference from sunlight and can easily view important information.</p>		
<p>With dimensions of 185 x 193 x 7.55 mm, the CH700WS02D-CTH is compact and easy to integrate into various devices. Its ultra-thin design makes it ideal for portable devices and applications with limited space. The lightweight design of the module not only reduces the weight of the overall device, but also reduces the complexity of transportation and installation, greatly improving user convenience.</p>		
		<p>The module is equipped with a capacitive touch panel and supports multi-touch, which enhances the user interaction experience. Capacitive touch technology can provide higher sensitivity and faster response speed, and users can operate with simple gestures such as sliding, zooming and rotating. This intuitive operation makes CH700WS02D-CTH widely used in smart home control panels, medical equipment and industrial automation systems.</p>
<p>The operating temperature range of CH700WS02D-CTH is -20 to +70 degrees Celsius, which can adapt to a variety of environmental conditions and ensure that the module can operate stably even in extreme temperatures. This feature makes it very suitable for industrial environments, outdoor equipment and other applications that need to work in harsh conditions. Whether it is cold winter or hot summer, CH700WS02D-CTH can maintain efficient working state and ensure the reliability and stability of the equipment. In addition, CH700WS02D-CTH also has high color saturation, supports 16.7M color display, and can present rich colors. This feature makes the module perform well in applications that require high-quality image display, such as medical imaging, advertising display and digital signage. Users can enjoy vivid, true color effects and enhance the visual experience.</p>		

## Features:

High Resolution: The CH700WS02D-CTH module provides a resolution of 1024x600, ensuring clear image details and suitable for a variety of application scenarios.

IPS Display Technology: Adopting IPS (In-Plane Switching) technology, it provides a wide viewing angle, allowing users to watch from different angles without distortion, ensuring consistent image quality.

High Brightness: The module brightness reaches 1000 cd/m<sup>2</sup>, which can maintain good readability in strong light environments and is suitable for outdoor use.

Capacitive Touch Panel: Equipped with a highly sensitive capacitive touch panel, it supports multi-touch and enhances the user interaction experience.

Durable Touch Glass: The touch glass is 1.1 mm thick and has a hardness of 6H, with good scratch resistance, suitable for frequently used environments.

Wide Temperature Operating Range: The operating temperature range is -20 to +70 degrees Celsius, adapting to a variety of environmental conditions, ensuring the normal operation of the module under extreme temperatures.

High Color Saturation: Supports 16.7M color display, capable of presenting rich colors, suitable for applications requiring high-quality images.

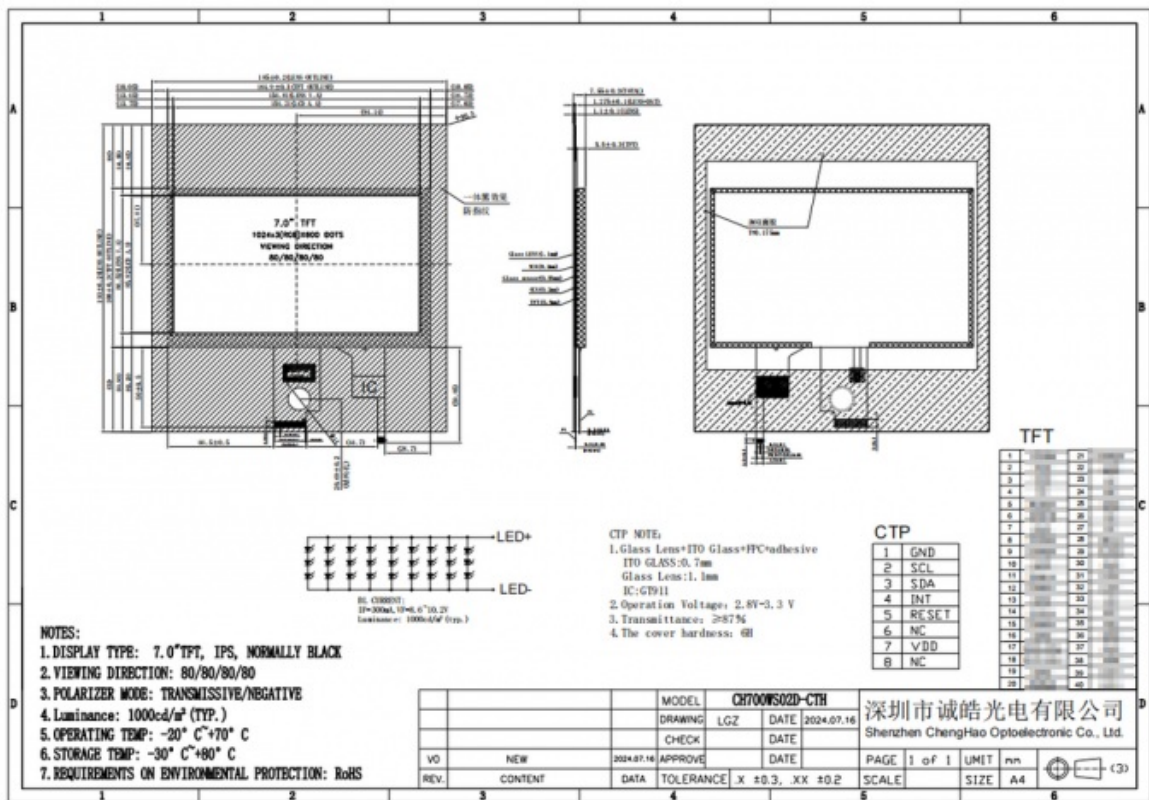
Compact Design: The module size is 185 x 193 x 7.55 mm, compact design, easy to integrate into various devices.

Customization options: Provide a variety of customization services, including adjustment of FPC shape, backlight brightness and interface type to meet customers' specific needs.

Multiple application fields: Suitable for industrial control, medical equipment, smart home, vehicle-mounted equipment and other fields, showing a wide range of applicability.

## Technical Parameters:

Technical Parameter	Value
Contrast	800:1
Operating Temperature	-20 ~ +70°C
Color	16.7M
Luminance	1000 Cd/m2
Touch Panel Interface	IIC
Touch Panel Type	Capacitive
Viewing Direction	80/80/80/80
Resolution	1024x600 Dots
Storage Temperature	-30 ~ +80°C
Display Mode	IPS/Transmissive/Normally Black



## Applications:

The CH700WS02D-CTH display module is widely used in multiple industries and fields due to its excellent performance and versatility. The following are the main application scenarios of this product:

**Industrial control:** In the field of industrial automation, CH700WS02D-CTH can be used for human-machine interface (HMI) to help operators monitor and control production equipment in real time. With a clear display, operators can make decisions quickly, thereby improving production efficiency and safety.

**Medical equipment:** This module is also widely used in the medical industry and can be integrated into various medical instruments such as heart rate monitors, ultrasonic equipment, and blood glucose meters. Its high resolution and high brightness characteristics enable medical staff to clearly read important physiological data and improve the accuracy of diagnosis.

**Smart home:** In the field of smart home, CH700WS02D-CTH can be used for smart control panels, home appliance displays, and home security systems. Users can easily control the devices in their homes through the touch screen, improving the convenience and comfort of life.

**In-vehicle display:** In the automotive industry, CH700WS02D-CTH can be used in in-vehicle navigation systems and central control displays to provide real-time navigation information, vehicle status, and entertainment system control. Its high brightness and wide viewing angle characteristics ensure that drivers can clearly view information under different lighting conditions.

**IoT devices:** The module performs well in IoT applications, supports data acquisition and real-time display, and is suitable for scenarios such as smart cities and smart agriculture. CH700WS02D-CTH can connect with other devices to form an intelligent ecosystem.

**Consumer electronics:** In consumer electronics products such as digital photo frames and portable devices, CH700WS02D-CTH can provide high-quality image display to meet users' high requirements for visual effects. Its thin and light design makes it suitable for a variety of portable applications.

**Financial payment terminals:** The module can also be used in POS machines and other financial transaction devices, providing a friendly user interface and reliable operation experience to ensure the smooth progress of transactions. High brightness and touch function allow users to operate easily in various environments.

**Instruments:** Among all kinds of measuring and testing instruments, CH700WS02D-CTH can provide clear data display to help users make accurate measurements and analysis, suitable for laboratory and industrial applications. Its high resolution and wide viewing angle characteristics make data visualization more intuitive.

Through these application areas, the CH700WS02D-CTH display module demonstrates its wide applicability and flexibility, which can meet the needs of different industries and provide customers with high-quality display solutions. Whether in industry, medical, smart home or other fields, CH700WS02D-CTH will become your ideal display choice.

## Packing and Shipping:

In terms of packaging and delivery, the CH700WS02D-CTH display module follows strict standards to ensure the safety and integrity of the product during transportation. The following are the detailed steps we take during packaging and delivery:

**Packaging materials that meet export standards:** We use hard cartons that meet international export standards to ensure that they can withstand external pressure and impact during transportation. All packaging materials are carefully selected to provide the best protection.

**Internal buffer design:** Each packaging box will be filled with foam material to prevent the display module from being collided and damaged during transportation. The use of foam can effectively absorb shock and ensure the safety of the product during transportation.

**Module layered packaging:** We use large boxes to pack small boxes to ensure that each module is fully protected. The display modules in each small box are wrapped separately to avoid collision with each other.

**Weight and size control:** The weight of each packaging box does not exceed 3.5 kg for easy handling and transportation. We will make reasonable packaging design according to the standard size of the product to ensure that there will be no problems due to overweight or improper size during transportation.

**Use pallets or wooden frames:** For large-volume shipments, we will use pallets or wooden frames for fixing to ensure that the products will not move or tilt during transportation. This method not only improves the stability of transportation, but also facilitates loading and

unloading.

Customized packaging options: If customers have special packaging needs, we can customize the packaging according to customer requirements. This includes changing the packaging method and using the customer-specified shipping method to meet specific logistics needs.

Transportation method selection: We have established cooperative relationships with a number of reliable logistics companies and provide a variety of transportation methods for customers to choose from, including air, sea and land transportation. According to customer needs and delivery time, we will choose the most suitable transportation method.

Quality inspection before shipment: Before shipment, all CH700WS02D-CTH modules undergo strict quality inspections to ensure that each product is in the best condition when it leaves the factory. This process includes a comprehensive inspection of the product's appearance and function to ensure there are no defects.

Through the above packaging and shipping process, we ensure that the CH700WS02D-CTH display module can be delivered to customers safely and promptly, meeting customers' high standards for product quality and service. We are always committed to providing a high-quality logistics experience to ensure customer satisfaction.

## FAQ:

**Q: What is the brand name of this LCD Display Module?**

A: The brand name is Chenghao Optoelectronic.

**Q: What is the model number of this LCD Display Module?**

A: The model number is CH700WS02D-CTH.

**Q: What certifications does this LCD Display Module have?**

A: This product is certified with CE, RoHS, and FCC.

**Q: What is the minimum order quantity for this LCD Display Module?**

A: The minimum order quantity is 100 pieces.

**Q: What are the packaging details for this LCD Display Module?**

A: All the products are packed in the right way to keep them safe. For small sizes, we use tray + carton, and for bigger sizes, we use foam slot + carton. We also design packages according to customers' requirements.



**Shenzhen ChengHao Optoelectronic Co., Ltd.**



+86 755-27806536



add@chenghaolcm.com



chenghaolcd.com

7th floor, building C5, Hengfeng Industrial City, Hangcheng street, Bao'an District, Shenzhen