



1000 Cd/m2 Luminance LCD Display Module 7 Inch 1024*600 Pixels For Transportation Control Systems

Our Product Introduction

for more products please visit us on chenghaolcd.com

Basic Information

- Brand Name: Chenghao Optoelectronic
- Certification: CE RoHS FCC
- Model Number: CH700WS02D-CTH
- Minimum Order Quantity: 100 Pcs
- Packaging Details: All The Products Are Packed In Right Way To Keep It Safe. For Small Sizes Of Products We Use Tray + Carton, For Bigger Sizes We Use Foam Slot + Carton. We Also Design Packages According To Customers' Requirements
- Delivery Time: 3~7 Days
- Payment Terms: TT Or Others
- Supply Ability: 50000000 Pcs/month



Product Specification

- Touch Panel Type: Capacitive
- Operating Temperature: -20 ~ +70°C
- Touch Panel Interface: IIC
- Display Mode: IPS/Transmissive/Normally Black
- Color: 16.7M
- Resolution: 1024x600 Dots
- Viewing Direction: 80/80/80/80
- Contrast: 800:1
- Highlight: 7 Inch LCD Display Module ,
1000 Cd/m2 LCD Display Module ,
1024*600 Pixels LCD Display Module



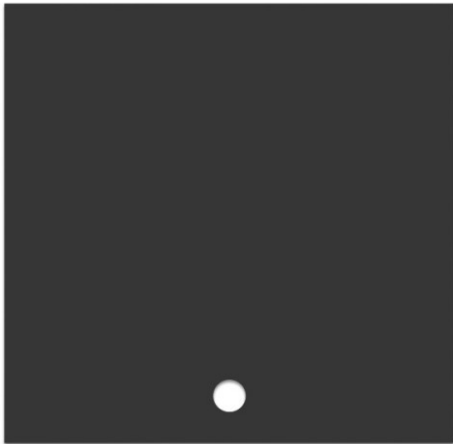

More Images





Product Description

Product Description:

<p>CH700WS02D-CTH is a high brightness 7-inch TFT LCD display module with a resolution of 1024x600 pixels and IPS technology to ensure clear images at all viewing angles. The module has a brightness of up to 1000 cd/m², making it readable under direct sunlight and suitable for outdoor and strong light environments. Its dimensions are 185 x 193 x 7.55 mm, which is compact and easy to integrate into various devices.</p>		
		<p>The module is equipped with a capacitive touch panel and supports multi-touch, which enhances the user interaction experience. Its touch glass is 1.1 mm thick and has a hardness of 6H, ensuring durability and scratch resistance. In addition, the operating temperature range of CH700WS02D-CTH is -20 to +70 degrees Celsius, which can adapt to a variety of environmental conditions and is widely used in industrial control, medical equipment, smart home and other fields. We also provide customization services to meet specific project needs to ensure that customers get the best display solution.</p>

Features:

High-brightness display: The module has a brightness of 1000 cd/m², ensuring clear readability in strong light environments and suitable for outdoor applications.

(1) **High resolution:** Providing a resolution of 1024x600 pixels, it can display delicate images and texts to meet high-quality display needs.

(2) **IPS display technology:** Adopting IPS (Plane Switching) technology, it provides a wide viewing angle (80/80/80/80), ensuring that the image quality is not affected when viewed from different angles.

(3) **Capacitive touch panel:** Equipped with a highly sensitive capacitive touch panel, it supports multi-touch and enhances the user interaction experience.

(4) **Durable touch glass:** The touch glass is 1.1 mm thick and has a hardness of 6H, with good scratch resistance, suitable for frequently used environments.

(5) **Wide operating temperature range:** The operating temperature range is -20 to +70 degrees Celsius, adapting to various environmental conditions and ensuring the normal operation of the module under extreme temperatures.

- (6) Customization options: Provide a variety of customization services, including adjustments to FPC shape, backlight brightness and interface type to meet customer specific needs.
- (7) High color saturation: Supports 16.7M color display, can present rich colors, suitable for a variety of visual applications.
- (8) Compact module design: The module size is 185 x 193 x 7.55 mm, and the compact design makes it easy to integrate into various devices.
- (9) Multiple application fields: Suitable for industrial control, medical equipment, smart home, vehicle-mounted equipment and other fields, showing a wide range of applicability.

Technical Parameters:

Resolution	1024x600 Dots
Operating Temperature	-20 ~ +70°C
Viewing Direction	80/80/80/80
Touch Panel Interface	IIC
Storage Temperature	-30 ~ +80°C
Color	16.7M
Touch Panel Type	Capacitive
Display mode	IPS/Transmissive/Normally Black
Contrast	800:1
Luminance	1000 Cd/m2

Applications:

The CH700WS02D-CTH display module is suitable for multiple industries and application scenarios due to its excellent performance and versatility. The following are the main application areas of this product:

Industrial Automation: This module can be used for human-machine interface (HMI) in industrial control systems to help operators monitor and control equipment in real time, improve production efficiency and safety.

Medical Equipment: In the medical field, CH700WS02D-CTH can be integrated into various medical instruments, such as heart rate monitors, blood glucose meters, and ultrasonic equipment, to provide clear data display to support medical staff for accurate diagnosis and monitoring.

Smart Home: This display module is suitable for smart home products such as smart refrigerators, smart coffee machines, and home control centers, allowing users to easily manage and monitor devices at home, improving the convenience and comfort of life.

In-vehicle system: In the automotive industry, CH700WS02D-CTH can be used in in-vehicle navigation systems and central control displays to provide real-time navigation information and vehicle status display to ensure driving safety and user experience.

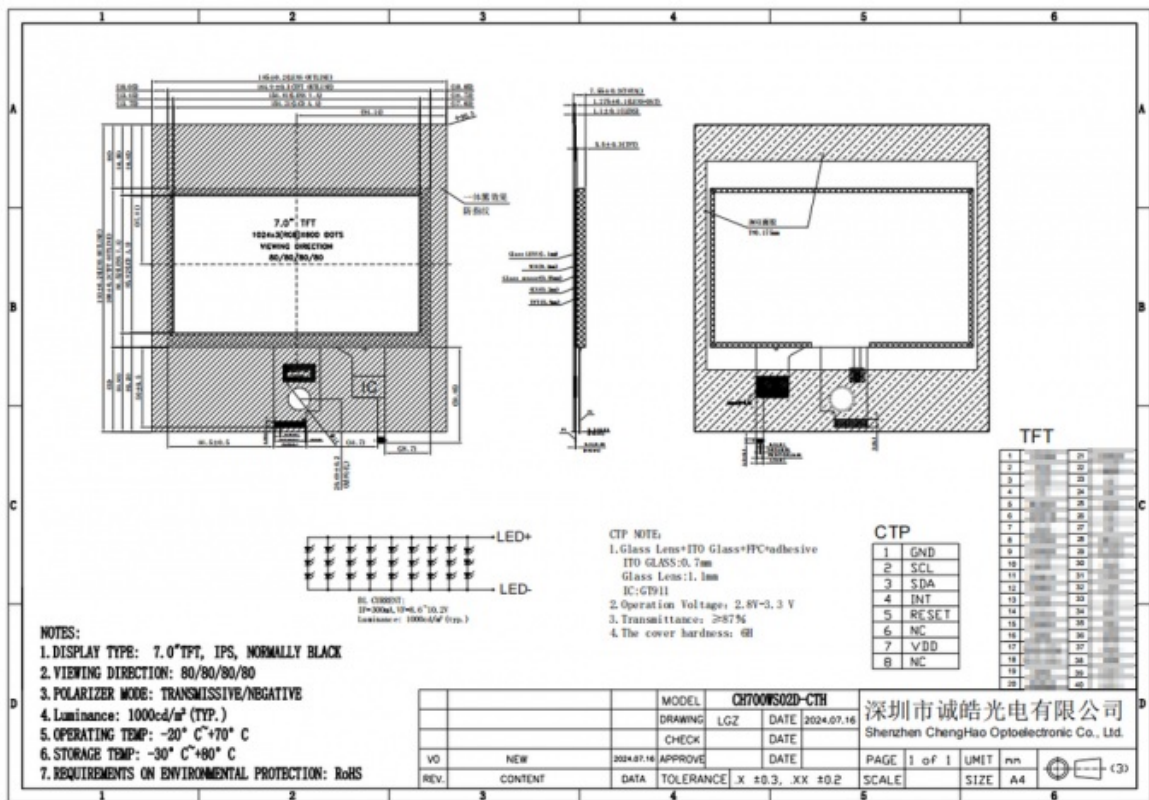
IoT devices: This module performs well in IoT applications, supports data collection and real-time display, and is suitable for scenarios such as smart cities and smart agriculture, helping to achieve interconnection between devices.

Consumer electronics: In consumer electronics products such as digital photo frames and portable devices, CH700WS02D-CTH can provide high-quality image display to meet users' high requirements for visual effects.

Financial payment terminals: This module can also be used in POS machines and other financial transaction devices, providing a friendly user interface and reliable operation experience to ensure the smooth progress of transactions.

Instruments: Among various types of measuring and testing instruments, CH700WS02D-CTH can provide clear data display to help users make precise measurements and analysis, and is suitable for laboratory and industrial applications.

Through these application areas, the CH700WS02D-CTH display module demonstrates its wide applicability and flexibility, which can meet the needs of different industries and provide customers with high-quality display solutions.



Support and Services:

The CH700WS02D-CTH display module is not only known for its excellent performance, but also provides comprehensive support and services to ensure customer satisfaction and a smooth experience during use. We are committed to providing customers with high-quality after-sales service and technical support, as follows:

Online technical support: Our technical team is always ready to provide customers with online support to answer technical questions encountered during testing or use. Whether it is installation guidance or functional consultation, we can provide professional help.

Strict quality inspection: All CH700WS02D-CTH modules shipped from the factory undergo strict quality inspection and testing to ensure that each product meets high standards of quality requirements. We also provide relevant certifications such as CE and RoHS to ensure that the products meet international standards.

Flexible customization service: We understand that the needs of each customer may be different, so we provide a variety of customization options, including adjustments to FPC shape, backlight brightness and interface type. Our team will work closely with customers to ensure that the final product meets their specific requirements.

Fast customer feedback mechanism: We value customer feedback and have a dedicated customer service team to ensure that customer opinions and suggestions can be communicated and responded to in a timely manner. This open communication channel helps us continuously improve our products and services.

Transportation and Packaging Guarantee: Our products are packaged strictly during transportation to ensure that the modules are intact when they reach our customers. In addition, we have established long-term partnerships with a number of express companies to ensure fast and safe logistics services.

Through these supports and services, the CH700WS02D-CTH display module not only provides customers with high-performance display solutions, but also ensures that they receive continuous support and protection throughout the entire use cycle. We always put customer satisfaction first and strive to create a better experience for our customers.

FAQ:

Q: What is the brand name of this LCD Display Module?

A: The brand name is Chenghao Optoelectronic.

Q: What is the model number of this LCD Display Module?

A: The model number is CH700WS02D-CTH.

Q: What certifications does this LCD Display Module have?

A: This LCD Display Module is certified with CE, RoHS, and FCC.

Q: What is the minimum order quantity for this LCD Display Module?

A: The minimum order quantity is 100 pcs.

Q: What are the packaging details for this LCD Display Module?

A: All the products are packed in the right way to keep them safe. For small sizes of products, we use tray + carton, and for bigger sizes, we use foam slot + carton. We also design packages according to customers' requirements.

Q: What is the delivery time for this LCD Display Module?

A: The delivery time is 3~7 days.

Q: What are the payment terms for this LCD Display Module?

A: The payment terms are TT or others.

Q: What is the supply ability for this LCD Display Module?

A: The supply ability is 50,000,000 pcs/month



Shenzhen ChengHao Optoelectronic Co., Ltd.



+86 755-27806536



add@chenghaolcm.com



chenghaolcd.com

7th floor, building C5, Hengfeng Industrial City, Hangcheng street, Bao'an District, Shenzhen