



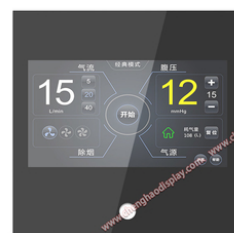
7inch Customized Lcd Display Module 1024x600 80/80/80/80 Free Viewing Direction Display

Our Product Introduction

for more products please visit us on chenghaolcd.com

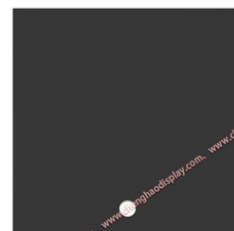
Basic Information

- Brand Name: Chenghao Optoelectronic
- Certification: CE RoHS FCC
- Model Number: CH700WS02D-CTH
- Minimum Order Quantity: 100 Pcs
- Packaging Details: All The Products Are Packed In Right Way To Keep It Safe. For Small Sizes Of Products We Use Tray + Carton, For Bigger Sizes We Use Foam Slot + Carton. We Also Design Packages According To Customers' Requirements
- Delivery Time: 3~7 Days
- Payment Terms: TT Or Others
- Supply Ability: 50000000 Pcs/month



Product Specification

- Storage Temperature: -30 ~ +80°C
- Operating Temperature: -20 ~ +70°C
- Resolution: 1024x600 Dots
- Contrast: 800:1
- Touch Panel Type: Capacitive
- Luminance: 1000 Cd/m2
- Color: 16.7M
- Display Mode: IPS/Transmissive/Normally Black
- Highlight: Customized Lcd Display Module,
7inch Lcd Display Module,
1024x600 Lcd Display Module



More Images





Product Description

Product Description:

The LCD display module is a high-quality display solution that provides superior performance and versatility for a wide range of applications. With a resolution of 1024x600 pixels, this display module provides crisp, clear images and stunning details, making it ideal for applications that require high-resolution visuals.

A highlight of this LCD display module is its high contrast ratio of 800:1, ensuring that images displayed on the screen are vivid and full of color. Whether you are viewing photos, videos or text, you can get crisp, sharp contrast and vivid colors to make your content come alive. With a viewing angle of 80/80/80/80, this LCD display module provides excellent visibility at all angles, making it ideal for applications where multiple people are viewing the screen at the same time. Whether you use this display for digital signage, interactive kiosks or other public-facing applications, you can expect consistent image quality and readability from any viewing angle.

For enhanced functionality, this LCD display module also features a capacitive touch screen, which allows for seamless and intuitive touch interaction with the screen. Whether you are navigating menus, scrolling through content, or entering data, the capacitive touchscreen ensures smooth and responsive touch control for an enhanced user experience.

In addition to its impressive technical specifications, this LCD display module is designed to be sunlight readable, making it ideal for outdoor applications or high ambient light environments. The display's high brightness and anti-glare properties ensure clear content even in bright sunlight, providing optimal visibility in any lighting condition.

All in all, this LCD display module is a versatile, high-performance display solution that offers superior picture quality, customizable display settings, and the enhanced functionality brought by a capacitive touchscreen. Whether you are looking for a custom LCD display for a specific application or need a sunlight-readable TFT display for outdoor use, this display module delivers reliable performance and superior visuals for a wide range of applications.

Features:

High Brightness: The module features a brightness level of 1000 cd/m², making it suitable for sunlight-readable applications [1].

Resolution: It offers a resolution of 1024x600 pixels, ensuring clear and detailed image quality.

IPS Technology: The display utilizes IPS (In-Plane Switching) technology, providing wide viewing angles of 80 degrees in all directions.

Capacitive Touch Panel: Equipped with a capacitive touch panel, it supports touch functionality for enhanced user interaction.

Durable Touch Glass: The touch glass cover has a thickness of 1.1 mm and a hardness rating of 6H, ensuring durability and resistance to scratches.

Wide Operating Temperature Range: The module operates effectively in a temperature range of -20 to +70 degrees Celsius, making it suitable for various environments.

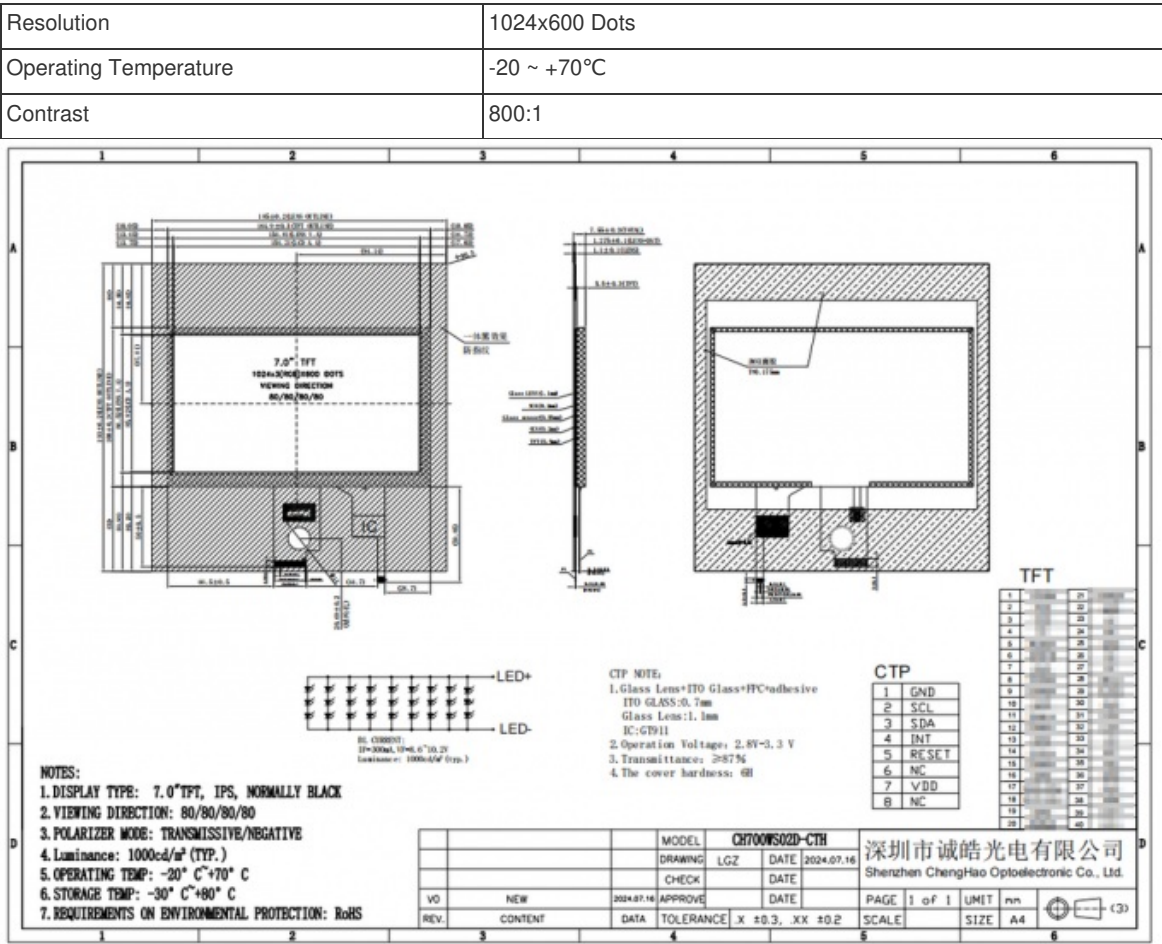
Customizable Solutions: Chenghao Optoelectronic offers customization options, including adjustments to the shape and structure of FPC, backlight brightness, and LCD interface design.

Color Depth: The display supports a color depth of 16.7 million colors, delivering vibrant and accurate color reproduction.

Touch Panel Interface: The touch panel operates via I2C interface, allowing for easy integration with other systems.

Technical Parameters:

Display mode	IPS/Transmissive/Normally Black
Color	16.7M
Luminance	1000 Cd/m2
Storage Temperature	-30 ~ +80°C
Viewing Direction	80/80/80/80
Touch Panel Interface	IIC
Touch Panel Type	Capacitive



Applications:

The CH700WS02D-CTH display module is widely used in multiple industries due to its excellent performance and flexible application characteristics. The following are the main application areas of this product:

Industrial control: This module can be used for the display interface of industrial automation equipment, such as PLC (Programmable Logic Controller) and HMI (Human Machine Interface), to provide real-time data monitoring and operation feedback, and enhance production efficiency and safety.

Medical equipment: In medical equipment, CH700WS02D-CTH can be used for the display screen of heart rate monitors, blood glucose meters and other diagnostic equipment, ensuring clear visual effects and accurate data presentation, helping medical staff to conduct effective monitoring and diagnosis.

Smart home: This display module is suitable for smart home devices such as smart refrigerators, coffee machines and home control panels, allowing users to easily monitor and control home devices and enhance user experience.

In-vehicle equipment: In in-vehicle applications, CH700WS02D-CTH can be used for central control display screens and navigation systems, providing clear navigation information and vehicle status display to ensure driving safety.

IoT devices: The module is suitable for various IoT devices, supporting data collection and real-time display, and helping applications in smart cities and smart agriculture.

Digital devices: In digital photo frames, portable devices, and small electronic products, CH700WS02D-CTH can provide high-quality image display to meet users' needs for visual effects.

Payment terminals: The module can also be used in POS machines and other financial devices, providing a user-friendly interface and reliable operation experience to ensure smooth transactions.

Instruments: In various types of measuring and testing instruments, CH700WS02D-CTH can provide clear data display to help users make accurate measurements and analysis.

Through these application areas, the CH700WS02D-CTH display module demonstrates its versatility and adaptability to meet the needs of different industries.

Customization:

The CH700WS02D-CTH display module offers a variety of customization options to meet customers' specific needs in different application scenarios. The following are the main customization contents of this product:

FPC customization: We can redesign the shape and structure of the FPC (flexible printed circuit board) according to the customer's project requirements to ensure that it fits the installation equipment perfectly. This customization can improve the compatibility and installation convenience of the module.

Backlight brightness adjustment: Customers can choose different backlight brightness according to the needs of the actual use environment. The backlight components we provide can reach a maximum brightness of 1000 cd/m², ensuring clear visibility under various lighting conditions.

LCD interface definition: CH700WS02D-CTH supports customization of multiple interface types, including LVDS interface. Customers can define the required interface type according to the requirements of the device to achieve better data transmission and compatibility.

Touch panel design: For applications that require touch interaction, we provide two touch solutions: capacitive touch and resistive touch. Customers can choose the appropriate touch technology according to application requirements and customize the thickness, hardness and shape of the touch glass.

Function customization: We can design display modules that meet specific requirements according to the actual application scenarios of customers. These modules usually have one or more highlights, such as sunlight readability, anti-glare function, wide viewing angle, high resolution, etc., to adapt to different usage environments.

Packaging customization: If customers have special needs, we can design packaging according to customer requirements, change packaging methods, and use customer-specified shipping methods. This ensures the safety and integrity of the product during transportation.

Through these customization options, the CH700WS02D-CTH display module can flexibly adapt to the needs of various industries, helping customers achieve the best product performance and user experience.

FAQ:

Q: What is the brand name of the LCD Display Module?

A: The brand name of the LCD Display Module is Chenghao Optoelectronic.

Q: What is the model number of the LCD Display Module?

A: The model number of the LCD Display Module is CH700WS02D-CTH.

Q: What certifications does the LCD Display Module have?

A: The LCD Display Module is certified with CE, RoHS, and FCC.

Q: What is the minimum order quantity for the LCD Display Module?

A: The minimum order quantity for the LCD Display Module is 100 pcs.

Q: What are the packaging details for the LCD Display Module?

A: All the products are packed in the right way to keep it safe. For small sizes of products, we use tray + carton, for bigger sizes we use foam slot + carton. We also design packages according to customers' requirements.



Shenzhen ChengHao Optoelectronic Co., Ltd.



+86 755-27806536



add@chenghaolcm.com



chenghaolcd.com

7th floor, building C5, Hengfeng Industrial City, Hangcheng street, Bao'an District, Shenzhen