



## High sensitivity Capacitive Resistive Touch Screen 10.1 Inch Full Color IPS Lcd Display Panel

### Our Product Introduction

for more products please visit us on [chenghaolcd.com](http://chenghaolcd.com)

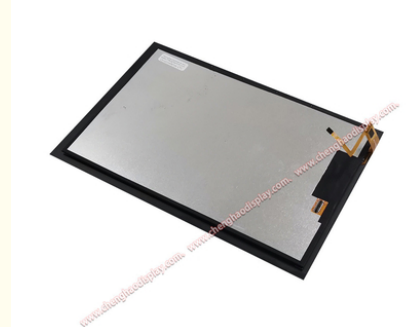
#### Basic Information

- Place of Origin: China, Shenzhen
- Brand Name: Chenghao Optoelectronic
- Certification: CE RoHS
- Model Number: CH101WX05A-CTC
- Minimum Order Quantity: 100 Pcs
- Packaging Details: All the products are packed in right way to keep it safe. For small sizes of products we use tray + carton, For bigger sizes we use foam slot + carton. we also design packages according to customers' requirements
- Delivery Time: 7-15 working days
- Supply Ability: 300Kpcs/month



#### Product Specification

- Product Name: 10.1 Inch Full Color IPS Lcd Display Panel
- Touch Panel Type: Capacitive
- Operating Temperature: -20 ~ +70 °C
- Storage Temperature: -30 ~ +80 °C
- Viewing Direction: 80/80/80/80
- Visible Area Size: 135.66 \* 216.88 Mm
- LCD Interface: MIPI
- Luminance: 300 Cd/m2
- Resolution: 800\*1280 Dots
- Highlight: 10.1 Inch LCD Display Panel,  
Full Color LCD Display Panel,  
High sensitivity LCD Display Panel



#### More Images





## Product Description

### Product Description:

CH101WX05A-CTC is a 10.1-inch vertical color TFT LCD module designed for applications that require high cost-effectiveness and stable performance. Its 800×1280 resolution combined with IPS wide viewing angle technology (80/80/80/80) presents delicate picture quality and wide viewing angle, suitable for devices that require multi-person sharing or complex interface operations. The typical brightness of 300cd/m<sup>2</sup> provides a soft and clear display effect in indoor environments, and with the transmissive and normally black display modes, it effectively balances the visual experience and power consumption control. The MIPI-DSI interface is paired with the FH26-31S-0.3SHW connector to ensure high-speed and low-power data transmission and stable connection, adapting to the efficient needs of smart devices.



The module adopts a G+G capacitive touch screen solution, a composite structure of 2.0mm glass lens and 0.55mm ITO glass, and the total thickness of the module is only 5.85±0.3mm, which is both thin and impact-resistant. The 6H hardness glass on the surface can resist daily scratches. It is equipped with a GT911 touch chip, supports precise multi-touch response, and improves the efficiency of human-computer interaction.

In terms of environmental adaptability, CH101WX05A-CTC can work stably in a wide temperature range of -20°C to 70°C, and the storage temperature is extended to -30°C to 80°C, which is suitable for harsh environments such as outdoor and industrial. The module complies with RoHS environmental protection standards, has a compact structure, and is easy to integrate into smart home terminals, educational electronic whiteboards, commercial display equipment and other fields, providing users with reliable display and touch solutions. Whether it is indoor office, vehicle-mounted applications or industrial control, CH101WX05A-CTC meets diverse needs with high cost performance and stable performance.



### Features:

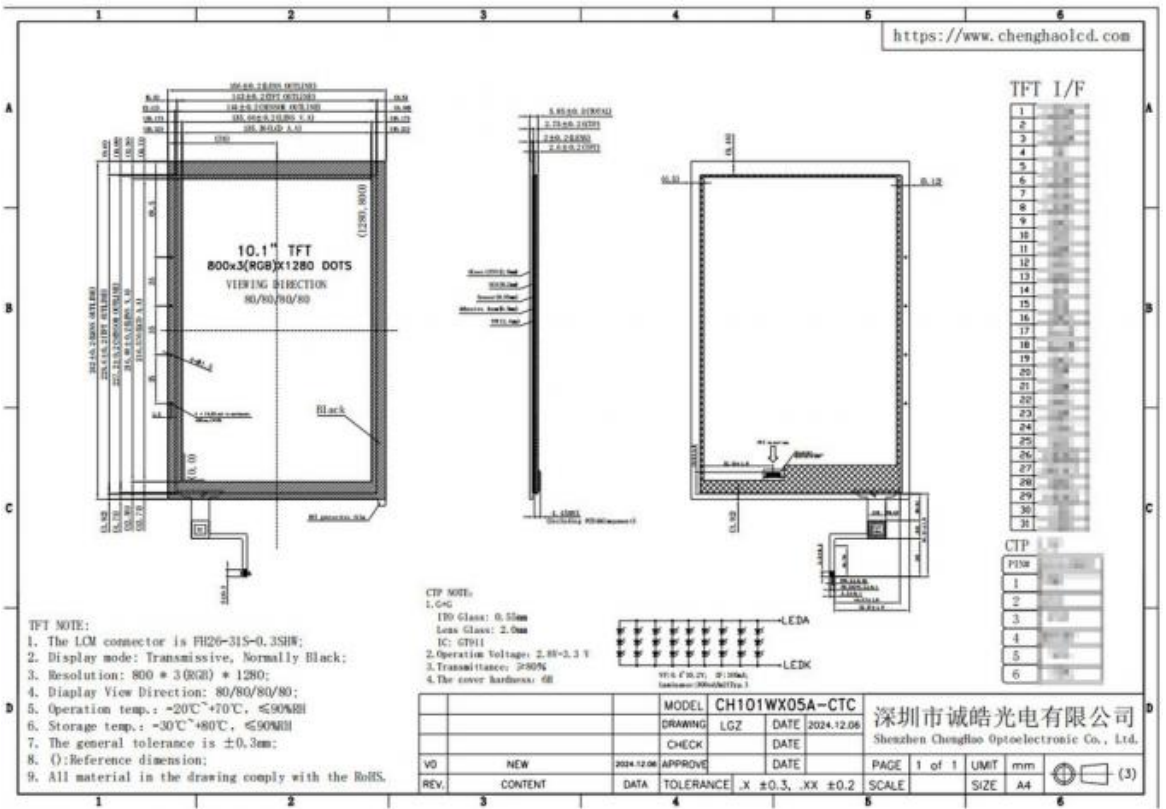
- (1) 10.1-inch vertical screen IPS display technology: Adopts 800×1280 high-resolution IPS panel, with 80/80/80/80 wide viewing angle design, ensuring accurate color and clear display without dead angle, suitable for multi-person collaboration or complex interface operation scenarios.
- (2) 300cd/m<sup>2</sup> brightness and energy-saving mode: Typical brightness of 300cd/m<sup>2</sup>, combined with transmissive and normally black display modes, provides a soft and clear visual experience in indoor environments, while reducing power consumption and extending device battery life.
- (3) MIPI-DSI high-speed interface and dedicated connector: Equipped with MIPI-DSI interface, supports high-speed and low-power data transmission, and is equipped with FH26-31S-0.3SHW connector to ensure signal stability and adapt to the high-efficiency requirements of modern smart devices.
- (4) Wide temperature range environmental adaptability: The operating temperature range is -20°C to 70°C, and the storage temperature is -30°C to 80°C. It adapts to high temperature difference environments such as outdoor and industrial environments, ensuring stable operation of the equipment under extreme conditions.
- (5) Lightweight and compact structural design: The overall thickness is only 5.85mm. The lightweight design is easy to integrate into portable devices or space-constrained application scenarios, such as vehicle-mounted central control, handheld terminals, etc.
- (6) High transmittance and wide voltage compatibility: Optical transmittance ≥ 80%, transparent and natural picture; support 2.8V-3.3V

wide voltage input, compatible with a variety of device power solutions, and improve system design flexibility.

(7) Environmental protection and reliability certification: Comply with RoHS environmental protection standards, material safety; after strict environmental testing, ensure long-term stability, suitable for industrial, medical and other fields with high reliability requirements.

Technical Parameters:

Viewing Direction	80/80/80/80
Module Size	156 * 242 * 5.85 mm
Display Mode	IPS /transmissive/ Normally Black
Touch Panel Type	Capacitive
Active Area Size	135.36 * 216.576 mm
Luminance	300 cd/m2
Resolution	800*1280 Dots
Operating Temperature	-20 ~ +70 °C
Touch Panel Interface	IIC
Storage Temperature	-30 ~ +80 °C



Applications:

With its 10.1-inch vertical screen design, IPS wide viewing angle technology and high reliability, CH101WX05A-CTC can be widely used in a variety of fields to meet the display and interaction needs of different scenarios:

-- Industrial Automation Control Terminal

In factory production lines or mechanical equipment, the wide temperature range characteristics of CH101WX05A-CTC (-20°C to 70°C) ensure that the equipment can operate stably in high and low temperature environments. Its high resolution and wide viewing angle design make it easy for operators to clearly view real-time data, equipment status charts and alarm information, and the vertical screen layout is more suitable for displaying multiple sets of parameters. The G+G touch screen supports precise control, and with the high-speed data transmission of the MIPI interface, it can achieve efficient interaction of the industrial control interface and improve production efficiency.

-- In-vehicle Information and Entertainment System

In the in-vehicle scene, the IPS wide viewing angle technology of CH101WX05A-CTC reduces sunlight reflection, ensuring that the driver can clearly read navigation, vehicle information and entertainment content at different angles. The brightness of 300cd/m<sup>2</sup> keeps the picture soft under the lighting conditions in the car, and the thin and light structure design is easy to integrate into the car center console. The wide temperature performance can cope with high temperature exposure in summer and low temperature startup in winter, ensuring the stable operation of the vehicle system around the clock.

-- Commercial smart terminal and digital signage

In commercial places such as shopping malls and hotels, CH101WX05A-CTC can be used as a smart terminal or digital signage. Its high resolution and color expression vividly display product advertisements, promotional information or interactive content, and the vertical

screen design is suitable for playing long strip dynamic pictures. The G+G touch screen supports customer self-service query or operation, and the low power consumption characteristics of the MIPI interface reduce equipment energy consumption, extend service life, and meet the long-term operation requirements of commercial scenarios.

#### -- Medical imaging and diagnostic equipment

In the medical field, CH101WX05A-CTC can be used in portable ultrasound equipment or mobile diagnostic terminals. The vertical screen display makes it easy for doctors to view image slices or test data, and the IPS wide viewing angle ensures the consistency of the picture during multi-person consultations. 300cd/m<sup>2</sup> brightness presents clear images in indoor environments, while the wide temperature performance adapts to scenarios with large temperature differences such as hospital cold storage or outdoor diagnosis and treatment, improving the flexibility and reliability of medical equipment.

#### -- Logistics and warehousing management equipment

In handheld terminals or warehousing equipment in the logistics industry, the high-brightness screen of CH101WX05A-CTC can still clearly display cargo information, barcodes or route planning under strong outdoor light. The light and compact design facilitates long-term handheld operation, and the G+G touch screen supports fast code scanning and data entry. The wide temperature range ensures that the equipment can work stably in complex environments such as cold storage (low temperature) or transport vehicles (high temperature), improving the efficiency and accuracy of logistics operations.

Through the above application scenarios, CH101WX05A-CTC provides reliable display and interaction solutions for industry, transportation, commerce, medical care, logistics and other fields with its performance advantages and adaptability.

## Packing and Shipping:

In terms of packaging and delivery, the CH101WX05A-CTC display module follows strict standards to ensure that the product is safe and intact during transportation. The following are the main measures we take during packaging and delivery:

**Packing materials:** All shipping boxes meet the export hardness standards to ensure that they can withstand external pressure and impact during transportation. We use high-quality foam liners to fill the box to prevent the display from being damaged during transportation.

**Packing method:** We use large boxes to pack small boxes. This method not only helps save space, but also effectively reduces transportation costs. At the same time, the small boxes inside can better protect each display module and avoid collisions during transportation.

**Weight and size control:** The weight of each packaging box does not exceed 3.5 kg to ensure easy handling during handling and transportation. The size of the box will be adjusted according to the standard to adapt to different transportation needs.

**Customized packaging options:** If the customer has special packaging needs, we can also design and adjust the packaging according to the customer's requirements. This includes changing the packaging method and using the customer's specified transportation method to meet specific logistics needs.

**Shipping process:** After confirming the order, we will arrange shipment in the shortest time. All products will undergo strict quality inspection before shipment to ensure that each module meets the standards and that the products received by customers are intact. Through the above packaging and shipping measures, we ensure the safety and reliability of the CH101WX05A-CTC display module during transportation. We are committed to providing customers with efficient and professional logistics services to meet customer expectations and needs.

## FAQ:

Q: How does the 800×1280 resolution of CH101WX05A-CTC display on a 10.1-inch screen? Are the text and images clear?

A: The pixel density (PPI) of this resolution on a 10.1-inch screen is about 149, which can present text, charts and images delicately, especially suitable for scenes that require precise display, such as industrial control and vehicle information. IPS wide viewing angle technology ensures that the picture remains clear and sharp when viewed from different angles.

Q: What is the touch life of the G+G touch screen? Does it support operation with gloves?

A: The touch screen is designed to have a lifespan of more than 5 million touch operations, meeting the needs of long-term high-frequency use. Its capacitive touch technology supports operation with thin gloves, but thick gloves may affect sensitivity. The specific effect needs to be tested according to the glove material, which is a customized option.

Q: Does the warranty period include the repair of all parts? Is there a charge for man-made damage?

A: The warranty period is 12 months, covering core component failures such as screens, touch components and interfaces caused by non-human factors. If the product is damaged due to improper human operation (such as physical damage, water ingress, etc.), the cost of parts and repairs will be charged. The specific cost will be informed by the technical team after evaluation.

Q: Do you provide on-site technical support or operation training?

A: We provide remote technical support (such as telephone and video guidance) to assist customers in solving integration or usage problems. If on-site support is required, it can be negotiated and arranged according to the project scale and region. Travel expenses may be incurred, which shall be subject to the contract agreement.

Q: If damage occurs during transportation, how should the customer deal with it?

A: Please be sure to check whether the outer packaging is intact before signing. If the packaging is damaged or the product is abnormal, you need to take photos on the spot and contact the logistics company to issue a damage certificate, and contact our customer service within 24 hours. We will replace or repair the damaged product free of charge based on the evidence.

Q: The storage temperature range of the product is -30°C to 80°C. Does long-term storage require special protection?

A: No additional protection is required within the standard storage temperature range, but it is recommended to store the product in a dry environment without corrosive gases. For long-term storage, use moisture-proof bags and check the integrity of the packaging regularly.





Shenzhen Chenghao Optoelectronic Co., Ltd.



+86 755-27806536



add@chenghaolcm.com



chenghaolcd.com

7th floor, building C5, Hengfeng Industrial City, Hangcheng street, Bao'an District, Shenzhen