



800x1280 Resolution 10.1 Inch TFT Lcd Panel with Capacitive Touch Panel Type and IPS Free Viewing Direction

Our Product Introduction

for more products please visit us on chenghaolcd.com

Basic Information

- Place of Origin: China, Shenzhen
- Brand Name: Chenghao Optoelectronic
- Certification: CE RoHS
- Model Number: CH101WX05A-CTC
- Minimum Order Quantity: 100 Pcs
- Packaging Details: All the products are packed in right way to keep it safe. For small sizes of products we use tray + carton, For bigger sizes we use foam slot + carton. we also design packages according to customers' requirements
- Delivery Time: 7-15 working days
- Supply Ability: 300Kpcs/month

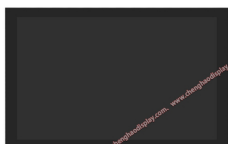


Product Specification

- Product Name: 10.1 Inch TFT Lcd Panel
- Module Size: 156 * 242 * 5.85 Mm
- Touch Panel Type: Capacitive
- Visible Area Size: 135.66 * 216.88 Mm
- Touch Panel Interface: IIC
- LCD Interface: MIPI
- Resolution: 800*1280 Dots
- Viewing Direction: 80/80/80/80
- Luminance: 300 Cd/m2
- Highlight: 800x1280 TFT Lcd Panel, IPS TFT Lcd Panel, 10.1 Inch TFT Lcd Panel




More Images



Product Description

Product Description:

		The CH101WX05A-CTC is a versatile 10.1-inch TFT LCD module designed to meet a variety of display needs in a variety of industries. With a resolution of 800x1280 pixels, the module provides vivid visual effects with a color depth of 16 million colors, ensuring clear and sharp images. IPS technology provides a wide viewing angle of 80 degrees in all directions, which is ideal for applications with multiple viewers.
		The module has a capacitive touch screen, which enhances user interaction through its sensitive multi-touch function. It can operate in a temperature range of -20 to +70 degrees Celsius, which is reliable in both indoor and outdoor environments. The module has a brightness of 300 cd/m ² , ensuring good visual effects in indoor environmental conditions. In addition, it also uses a MIPI interface to communicate with external devices, and data transmission is more efficient and stable. The CH101WX05A-CTC is an ideal choice for industrial control, medical equipment and smart home device applications, providing a powerful solution for modern display needs.

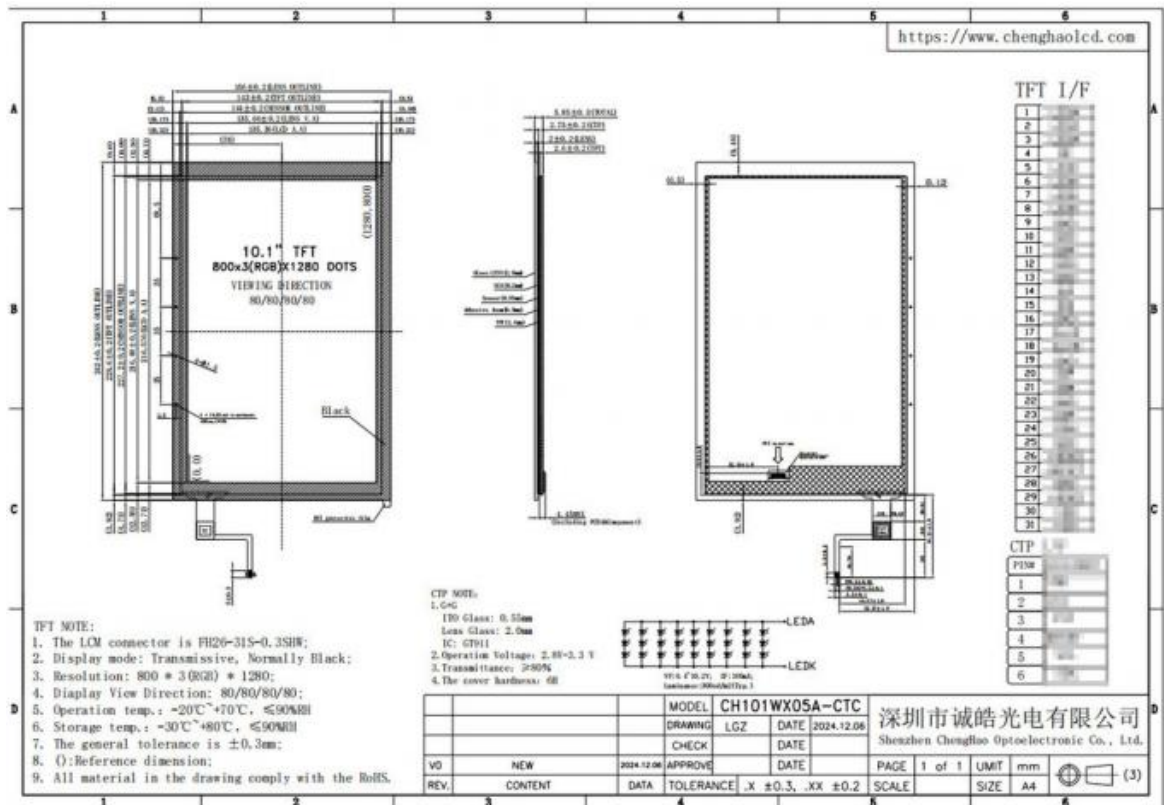
Features:

- (1) Display mode: IPS technology is used to provide excellent color performance and wide viewing angle, ensuring clear viewing from different angles.
- (2) Resolution: With a high resolution of 800x1280 pixels, it can present delicate images and videos.
- (3) Color depth: Supports 16M color display, providing rich color options, suitable for a variety of application scenarios.
- (4) Brightness: The maximum brightness can reach 300 cd/m², ensuring good visibility even in bright environments.
- (5) Touch panel: Equipped with a capacitive touch panel, supports multi-touch, and enhances user interaction experience.
- (6) Operating temperature range: It can operate stably in an environment of -20 to +70 degrees Celsius, adapting to a variety of working conditions.
- (7) Storage temperature range: It can also be safely stored in an environment of -30 to +80 degrees Celsius, ensuring product reliability.
- (8) Interface type: Adopts MIPI interface, which is convenient for connection and integration with other devices.
- (9) Touch glass thickness: The touch glass thickness is 2mm, which increases the durability of the module.
- (10) Touch panel transmittance: Transmittance ≥ 80%, ensuring the clarity and brightness of the display.

These features make the CH101WX05A-CTC module an ideal choice for industrial control, medical equipment, smart home and other fields.

Technical Parameters:

Module Size	156 * 242 * 5.85 mm
Active Area Size	135.36 * 216.576 mm
Viewing Direction	80/80/80/80
Storage Temperature	-30 ~ +80 °C
Resolution	800*1280 dots
Visible Area Size	135.66 * 216.88 mm
Operating Temperature	-20 ~ +70 °C
Touch Panel Type	Capacitive
Luminance	300 cd/m2



Applications:

CH101WX05A-CTC is a versatile 10.1-inch TFT LCD module that is widely used in multiple industries to meet different display needs. The following are the main application areas of this product:

- Industrial control: In industrial automation and control systems, CH101WX05A-CTC can be used to monitor and control equipment, provide real-time data and status display, and help operators make quick decisions.
- Medical equipment: The module is suitable for various medical equipment such as heart rate monitors, diagnostic instruments and surgical equipment, providing a clear graphical interface to ensure that doctors and nurses can accurately read important information.
- Smart home: CH101WX05A-CTC can be integrated into smart home devices such as smart refrigerators, coffee machines and home automation control panels, providing a user-friendly interface for users to operate and monitor.
- In-vehicle applications: The display module is suitable for in-vehicle devices such as navigation systems and central control displays, providing high brightness and clear visual effects to ensure driving safety.
- IoT devices: In IoT applications, CH101WX05A-CTC can be used as a data display interface, connecting various sensors and devices, displaying data in real time, and enhancing user experience.
- Instrumentation: This module can be used for various instruments and measuring equipment, such as detection instruments and monitoring equipment, to provide accurate data display to help users analyze and judge.
- Artificial Intelligence Devices: In intelligent robots and other artificial intelligence applications, CH101WX05A-CTC can be used as a human-computer interaction interface, supporting multi-touch and improving the convenience of user interaction.

Through these application areas, CH101WX05A-CTC demonstrates its flexibility and adaptability in modern technological environments, providing efficient display solutions for various industries

Customization:

The CH101WX05A-CTC display module offers a variety of customization options to meet customers' specific needs and application scenarios. The following are the main customization contents of this product:

- (1) Module shape and structure: According to the customer's project requirements, we can redesign the shape and structure of the FPC (flexible printed circuit) to ensure that it fits perfectly with the installation equipment. This customization can effectively solve space limitations and installation compatibility issues.
- (2) Backlight brightness adjustment: CH101WX05A-CTC supports backlight brightness adjustment according to the actual needs of customers. Customers can choose the brightness level suitable for their application environment, up to 2500 cd/m² Luminance, to ensure visibility under different lighting conditions.
- (3) LCD interface definition: We can define the LCD interface type according to the specific needs of customers, supporting multiple interface options, including MIPI. This flexibility enables CH101WX05A-CTC to seamlessly connect with a variety of devices and systems.
- (4) Touch panel design: For customers who require touch interaction, we provide customized touch solutions, including the design of capacitive touch panels. The thickness, hardness and transmittance of the touch glass can be adjusted according to customer requirements to meet specific usage environments and durability requirements.

(5) Packaging customization: In addition to the customization of the module itself, we also provide packaging design services. Customers can choose different packaging methods and materials according to their brand image and transportation needs to ensure the safety and integrity of the product during transportation.

(6) Transportation method selection: We support customer-specified transportation methods to better meet their supply chain management needs. This flexibility ensures that the product can be delivered to customers in a timely and safe manner.

Through these customization options, CH101WX05A-CTC can provide customers with more targeted solutions to meet the needs of different industries and applications, further enhancing user experience and product value.

FAQ:

Q: What is the resolution of CH101WX05A-CTC?

A: The resolution of CH101WX05A-CTC is 800x1280 pixels, which can provide clear and delicate image display and is suitable for a variety of application scenarios.

Q: What is the operating temperature range of this product?

A: The operating temperature range of this display module is -20 to +70 degrees Celsius, and it can operate stably under a variety of environmental conditions.

Q: What warranty services does CH101WX05A-CTC provide?

A: We provide a one-year warranty service for CH101WX05A-CTC to ensure that any problems encountered by customers during use can be solved in a timely manner.

Q: If there is a problem with the product, what is the after-sales service like?

A: If customers encounter any technical problems during use, our after-sales service team will provide remote online technical support to ensure that customers can solve the problem smoothly.

Q: How to customize the product?

A: Customers can customize the module shape, backlight brightness, LCD interface, etc. according to their own needs. We will provide personalized solutions according to the specific requirements of customers.

Q: What functions does the touch panel of CH101WX05A-CTC support?

A: The module is equipped with a capacitive touch panel, supports multi-touch function, enhances the user interaction experience, and is suitable for applications that require touch operation.

Q: How to get technical support?

A: If customers need technical support when using CH101WX05A-CTC, they can contact our technical team by email, and we will reply within 24 hours.

Q: What is the minimum order quantity (MOQ) of the product?

A: The minimum order quantity of CH101WX05A-CTC is 100 units, which is suitable for bulk purchase needs.

Q: Do you provide samples?

A: Yes, we support sample application, and customers can get samples for testing and evaluation before placing an order.



Shenzhen ChengHao Optoelectronic Co., Ltd.



+86 755-27806536



add@chenghaolcm.com



chenghaolcd.com

7th floor, building C5, Hengfeng Industrial City, Hangcheng street, Bao'an District, Shenzhen