



OEM 7 Inch Touch Screen RGB 1024*600 IPS TFT Lcd Screen Panel

Our Product Introduction

for more products please visit us on chenghaolcd.com

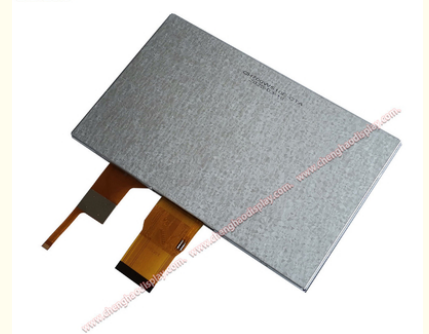
Basic Information

- Place of Origin: China Shenzhen
- Brand Name: Chenghao Optoelectronic
- Certification: CE RoHS FCC
- Model Number: CH700WS10E-CTA
- Minimum Order Quantity: No Moq
- Packaging Details: All the products are packed in right way to keep it safe. For small sizes of products we use tray + carton, For bigger sizes we use foam slot + carton. we also design packages according to customers' requirements
- Delivery Time: 3~7 Days
- Payment Terms: TT or Others
- Supply Ability: 20000000 pcs/month



Product Specification

- Product Name: 7 Inch Touch Screen
- Operating Temperature: -20 ~ +70°C
- Brightness: 1000 Cd/m2 Luminance
- Display Mode: IPS/Transmissive/Normally Black
- Storage Temperature: -30 ~ +80°C
- Viewing Direction: 80/80/80/80
- Lcd Type: 7" TFT + CTP
- Touch Type: Capacitive
- Resolution: 1024*600 Dots
- Highlight: IPS TFT Lcd Screen Panel,
1024*600 TFT Lcd Screen Panel,
7 Inch TFT Lcd Screen Panel



More Images





Product Description

Product Description:

CH700WS10E-CTA is a 7.0-inch horizontal color TFT LCD module that uses IPS display technology and has a brightness of up to 1000cd/m², which can present clear and bright pictures even in strong light environments. The 160° wide viewing angle design ensures consistent image quality from multiple viewing angles, and the color performance is rich and bright, which is very suitable for scenes that require an excellent visual experience.

<p>The module uses RGB interface and I2C touch interface to support reliable data transmission and sensitive touch interaction. The capacitive touch screen uses GT911 chip, which responds accurately and supports multi-touch, improving the convenience of device operation. The touch glass cover uses a 0.7mm glass lens and ITO glass composite structure to achieve a balance between lightness and durability. The surface hardness reaches 6H, which can effectively resist daily wear and tear. The touch glass cover has a light transmittance of ≥87%, and with a brightness of 1000cd/m², the picture is transparent and natural. In addition, the touch panel supports a wide voltage input range of 2.8V-3.3V and has strong compatibility.</p>		
		<p>In terms of performance, CH700WS10E-CTA supports a wide operating temperature range of -20°C~70°C, and can work stably in extreme environments; the storage temperature range is -30°C~80°C, and it has strong environmental adaptability. The module has passed the RoHS environmental certification and complies with international standards.</p>

Whether it is an industrial control terminal, outdoor display equipment, or medical equipment, CH700WS10E-CTA can provide efficient and stable display solutions with high brightness, wide temperature resistance range, compact design, and reliable performance to meet various market needs.

Features:

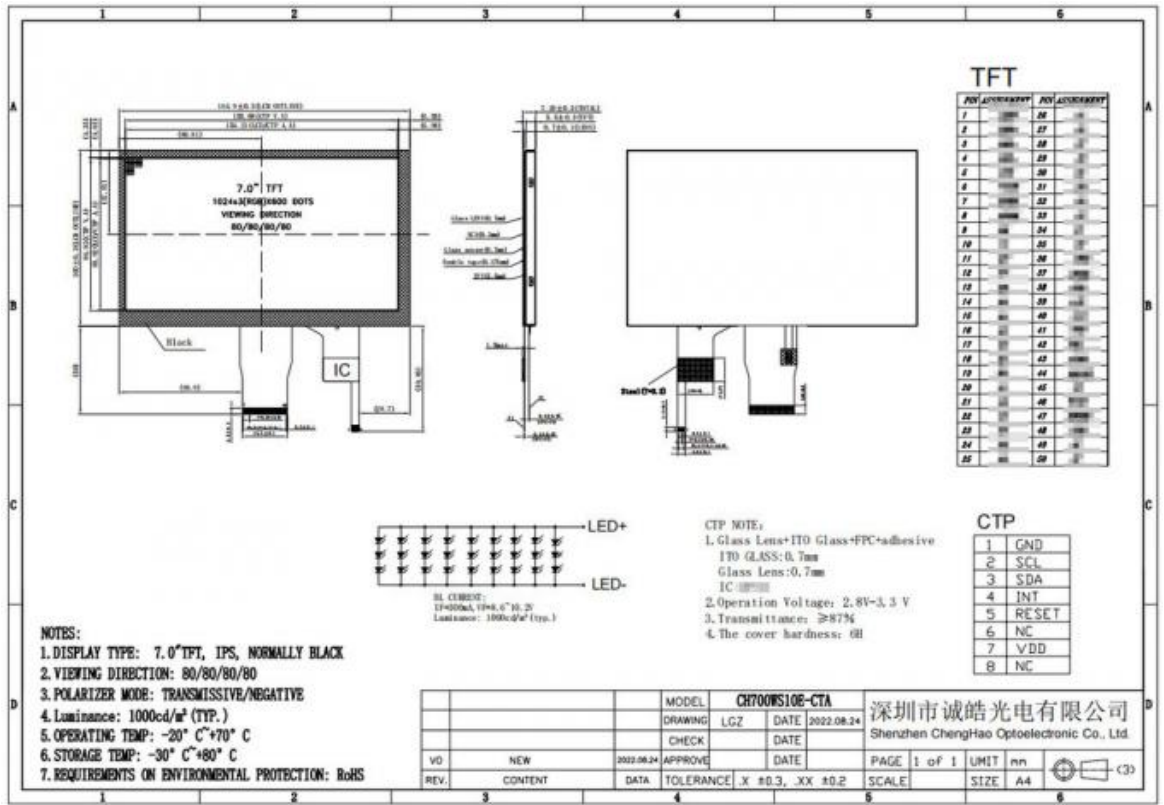
- (1) 7.0-inch IPS horizontal screen design: Using IPS technology and always-on black mode, it presents high-contrast images with accurate color reproduction, suitable for scenes with strict display requirements.
- (2) Ultra-high brightness and wide viewing angle: The typical brightness is 1000cd/m², which is still clearly visible under strong light; the 160° full viewing angle design ensures uniform and consistent images at multiple angles.
- (3) Wide temperature adaptability: It supports a wide operating temperature range of -20°C to 70°C, and the storage temperature range is extended to -30°C to 80°C, which can adapt to high temperature difference environments such as outdoor and industrial environments.
- (4) Capacitive touch, precise response: The capacitive touch screen equipped with the GT911 chip supports multi-touch, with sensitive and precise operation, improving the human-computer interaction experience.
- (5) Lightweight and sturdy Touch Cover: It adopts a composite design of 0.7mm glass lens and ITO glass, with a surface hardness of 6H,

which is both lightweight and scratch-resistant.

- (6) High transmittance energy-saving design: The optical transmittance of the touch glass cover is $\geq 87\%$, and the picture is transparent and natural; the touch panel supports 2.8V-3.3V wide voltage input, strong compatibility, and optimized power consumption.
- (7) Stable interface configuration: Adopting RGB signal interface and I2C touch control interface to ensure stable data transmission and facilitate device integration and development.
- (8) Environmentally friendly and reliable: Passed RoHS environmental certification and complies with international standards; compact structure and rigorous testing to ensure long-term stability.

Technical Parameters:

Viewing Direction	80/80/80/80
Lcd Interface	RGB
Brightness	1000 Cd/m2 Luminance
Resolution	1024*600 Dots
Touch Type	Capacitive
Storage Temperature	-30 ~ +80°C
Operating Temperature	-20 ~ +70°C
Color	16.7M
Lcd Type	7" TFT + CTP
Touch Panel Interface	IIC



Applications:

CH700WS10E-CTA is a high-performance 7-inch IPS TFT LCD touch screen with a wide range of applications. Its excellent display performance and customization capabilities make it suitable for multiple industries. The following are some of the main application areas of this product:

- (1) Industrial control: CH700WS10E-CTA performs well in industrial automation and control systems. Its high brightness and wide viewing angle characteristics enable it to provide clear visual effects in various industrial environments, suitable for monitoring and control panels, ensuring that operators can obtain important data and information in real time.
- (2) Medical equipment: In the medical industry, this module can be used for the display of heart rate monitors, blood glucose meters and other medical instruments. Its high brightness and wide temperature operating range enable it to work stably in different medical environments, ensuring that medical staff can accurately read data.
- (3) Smart home: CH700WS10E-CTA can be integrated into smart home devices such as smart refrigerators, coffee machines and home automation control panels. Its touch function and high-resolution display can enhance the user experience and make the operation of home devices more intuitive and convenient.
- (4) In-vehicle devices: This display module is ideal for in-vehicle navigation systems and central control displays. Its high brightness

ensures clear visibility even under direct sunlight, enhancing driving safety and convenience.

(5) IoT devices: With the development of IoT, CH700WS10E-CTA can be applied to a variety of smart devices, such as smart sensors and monitoring equipment. Its flexible interface and customization options make it compatible with different IoT platforms and meet diverse application needs.

(6) Digital signage: In the field of advertising and information display, this module can be used for digital signage and kiosks. Its high brightness and color performance can attract the audience's attention and provide a vivid visual experience, making it suitable for use in shopping malls, exhibitions and public places.

(7) Consumer electronics: CH700WS10E-CTA is also suitable for a variety of consumer electronics products, such as digital photo frames and portable game consoles. Its high resolution and touch function enable users to enjoy a better interactive experience.

In short, CH700WS10E-CTA can meet the needs of different industries with its excellent performance and diverse application capabilities. Whether in the fields of industry, medical care, smart home or consumer electronics, the module demonstrates great flexibility and adaptability.

Support and Services:

At Chenghao Optoelectronics, we are committed to providing excellent support and service for our TFT Lcd display modules. Our goal is to ensure that our customers not only receive a high-quality product, but also receive comprehensive assistance throughout the purchasing process and afterwards.

(1) Pre-sales consultation: We provide expert consulting services to help customers select the right display module for their specific application. Our knowledgeable team can gain in-depth understanding of our customers' actual project requirements, ensuring that customers can make informed decisions based on their project needs.

(2) Customization support: We understand that every project has unique requirements, so we provide a wide range of customization options for the CH700WS10E-CTA. Our team can discuss modifications such as backlight brightness adjustment, interface selection, and touch screen specifications. This level of support ensures that the module is perfectly matched to your application needs.

(3) Technical assistance: Our dedicated technical support team can help customers resolve any questions or issues that may arise during installation or operation. We provide remote online technical support to resolve any challenges, ensuring that our customers can effectively utilize the tft lcd Module products we provide in their projects.

(4) Quality Assurance: Chenghao Optoelectronics adheres to strict quality management standards, including ISO9001 and ISO14001 certifications. Each tft lcd module undergoes rigorous testing and quality inspections before shipment, ensuring that our customers receive reliable and high-performance products.

(5) After-sales Service: We provide a one-year after-sales guarantee on our products. If any problems arise during this period, we will provide replacement services for defective devices.

(6) Logistics Support: To facilitate smooth delivery, we have established partnerships with several logistics companies, allowing us to provide competitive freight rates and efficient shipping solutions. Our logistics team ensures that all products are securely packaged and delivered in a timely manner.

(7) Documentation and Certification: We provide relevant certifications such as RoHS and CE upon request. These documents support compliance with international standards and regulations, giving our customers peace of mind about the quality and safety of their display modules.

In summary, Chenghao Optoelectronics is committed to providing comprehensive support and services for the CH700WS10E-CTA display module. From pre-sales consultation to post-sales support, we strive to ensure a seamless experience for our clients, enabling them to achieve their project goals with confidence.

FAQ:

Q: What is the brand name of this TFT LCD Capacitive Touchscreen product?

A: The brand name is Chenghao Optoelectronic.

Q: What is the model number of this TFT LCD Capacitive Touchscreen product?

A: The model number is CH700WS10E-CTA.

Q: Where is this TFT LCD Capacitive Touchscreen product manufactured?

A: This product is manufactured in China, specifically in Shenzhen.

Q: What certifications does this TFT LCD Capacitive Touchscreen product have?

A: This product is certified with CE, RoHS, and FCC.

Q: What are the payment terms accepted for purchasing this TFT LCD Capacitive Touchscreen product?

A: The accepted payment terms are TT (Telegraphic Transfer) or others.



Shenzhen ChengHao Optoelectronic Co., Ltd.



+86 755-27806536



add@chenghaolcm.com



chenghaolcd.com

7th floor, building C5, Hengfeng Industrial City, Hangcheng street, Bao'an District, Shenzhen