



High Brightness 4.3 Inch LCD Touch Screen 16M Color Display Mode IPS /transmissive/ Normally Black

Our Product Introduction

for more products please visit us on chenghaolcd.com

Basic Information

- Place of Origin: China Shenzhen
- Brand Name: Chenghao Optoelectronic
- Certification: RoHS CE FCC
- Model Number: CH430WQ12A1-CT
- Minimum Order Quantity: 100 pcs
- Packaging Details: All the products are packed in right way to keep it safe. For small sizes of products we use tray + carton, For bigger sizes we use foam slot + carton. we also design packages according to customers' requirements
- Delivery Time: 3~7 Days
- Payment Terms: TT
- Supply Ability: 300K pcs/month

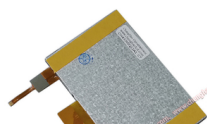


Product Specification

- Product Name: 4.3 Inch Small LCD Touch Screen
- Touch Panel Type: Capacitive
- Brightness: 300 Cd/m2
- Display Mode: IPS /transmissive/ Normally Black
- Viewing Direction: 80/80/80/80
- Storage Temperature: -30 ~ +80 °C
- Resolution: 480 X 272 Dots
- Operating Temperature: -20 ~ +70 °C
- Color: 16M
- Highlight: High Brightness LCD Touch Screen, 16M Color LCD Touch Screen, 4.3 Inch LCD Touch Screen



More Images





Product Description

Product Description:

About the CH430WQ12A1-CT LCD Module

The CH430WQ12A1-CT is a 4.3-inch IPS TFT LCD module developed, manufactured, and sold by Chenghao Optoelectronic, designed to meet the needs of various industry applications. This module adopts IPS technology with a transmissive/normally black display mode, a resolution of 480x272 pixels, and supports 16M colors, ensuring clear images and vibrant colors. It offers an 80/80/80/80 viewing angle, suitable for multi-angle viewing, and a brightness of 300 cd/m², making it ideal for display requirements under various lighting conditions.

Technical Specifications

The CH430WQ12A1-CT has dimensions of 105.5*67.2*4.95 mm, a display area of 96.0454.86 mm, and an active area of 95.04*53.86 mm. The module consists of a TFT LCD panel, a capacitive touch panel, a driver IC, a backlight, and an FPC. It supports a 24-bit parallel RGB interface and an I2C touch panel interface. Its operating temperature range is -20 to +70°C, and its storage temperature range is -30 to +80°C, ensuring reliable performance in harsh environments.

Features:

Compact Size: The module measures 105.5 * 67.2 * 4.95 mm, making it suitable for applications with space constraints.

High Color Depth: It supports 16 million colors, providing rich and vibrant visuals for enhanced user experience.

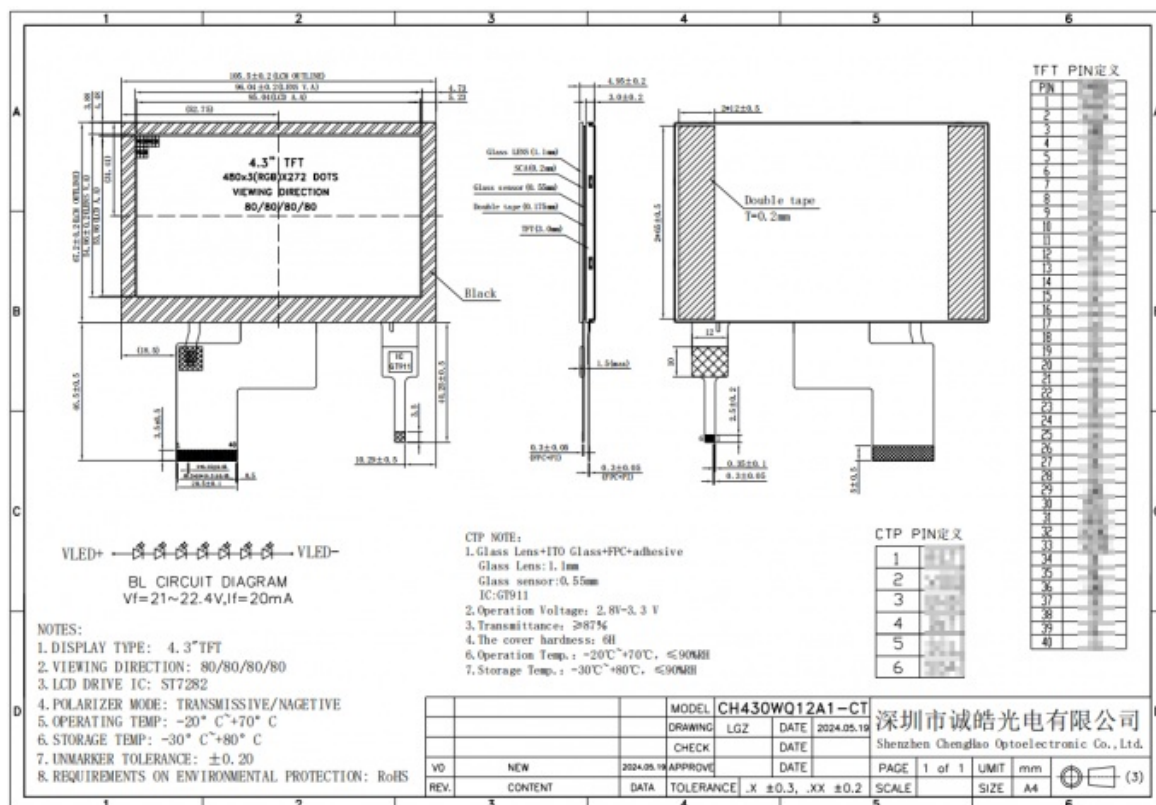
Wide Operating Temperature Range: The module operates effectively in temperatures ranging from -20 to +70°C, ensuring reliability in various environmental conditions.

Capacitive Touch Technology: The integrated capacitive touch panel allows for responsive and intuitive user interaction.

IPS Technology: The use of IPS (In-Plane Switching) technology ensures wide viewing angles and consistent color reproduction, enhancing the overall display quality.

Customizable Options: The module can be customized according to specific project requirements, including adjustments to the backlight brightness and modifications to the FPC structure.

Versatile Applications: Ideal for use in various industries such as industrial control, smart home devices, medical equipment, and IoT applications, showcasing its adaptability.



Technical Parameters:

Resolution	480 X 272 Dots
------------	----------------

Display Mode	IPS /transmissive/ Normally Black
LCD Interface	24-bit Parallel RGB Interface
Color	16M
Viewing Direction	80/80/80/80
Touch Panel Type	Capacitive
Brightness	300 Cd/m2
Touch Panel Interface	Touch Panel Interface
Operating Temperature	-20 ~ +70 °C
Storage Temperature	-30 ~ +80 °C

Applications:

The CH430WQ12A1-CT is a versatile 4.3-inch IPS TFT LCD module that finds extensive applications across various industries, catering to diverse needs.

- * **Industrial Control:** This module can be utilized in industrial control systems, providing real-time data monitoring and operational interfaces, which help users manage and control production processes effectively.
- * **Medical Equipment:** In the healthcare sector, the CH430WQ12A1-CT can be integrated into devices such as heart rate monitors and thermometers, offering a clear display interface that ensures medical personnel can quickly access critical information.
- * **Smart Home Devices:** The module is suitable for smart home applications, such as smart refrigerators and coffee machines, providing an intuitive user interface that enhances the overall user experience.
- * **Internet of Things (IoT) Devices:** In IoT applications, the CH430WQ12A1-CT can serve as a data display screen, connecting sensors and controllers to show real-time environmental data and device status.
- * **Vehicle-Mounted Equipment:** This module is ideal for use in vehicle control systems, navigation devices, and dash cameras, delivering high brightness and wide viewing angles to ensure driving safety.
- * **Instrumentation:** In various instruments and meters, the CH430WQ12A1-CT can be employed to display measurement results and operational interfaces, assisting users in precise instrument operation.
- * **Artificial Intelligence Devices:** The module can also be applied in intelligent robots and AI devices, providing a human-machine interaction interface that enhances the level of device intelligence.
- * **Payment and Financial Devices:** In payment terminals such as POS machines and ATMs, the CH430WQ12A1-CT can present clear transaction information and user operation interfaces, ensuring smooth transaction processes.

Through these application areas, it is evident that the CH430WQ12A1-CT module's flexibility and adaptability make it an ideal display solution across multiple industries.

Packing and Shipping:

At Chenghao Optoelectronic, we attach great importance to the packaging and transportation of our products to ensure that the CH430WQ12A1-CT module is safe and intact during transportation. Here are our detailed instructions on packaging and shipping:

Packing materials: We use shipping boxes that meet export hardness standards to ensure adequate protection during transportation. Each box is equipped with foam padding inside to prevent the display from being damaged during transportation. This packaging design is designed to minimize the impact of external shocks on the product and ensure that the product arrives safely in the hands of customers.

Packing structure: The packaging of the CH430WQ12A1-CT module adopts the method of packing small boxes inside large boxes. This structure not only saves space, but also effectively protects each module to avoid collision or squeezing during transportation.

Transportation method: We can choose the appropriate transportation method according to the needs of customers. Whether it is sea transportation, air transportation or express delivery, we will make sure to choose the most effective method to ensure that the product is delivered in time. We can also adjust the packaging method according to customer requirements to adapt to different transportation conditions.

Loading and shipping: During the loading process, we will use pallets or wooden frames to fix the goods to ensure stability during transportation. All packaging and loading work follows strict quality control standards to ensure that each product is carefully checked before shipment.

Customer customized packaging: If the customer has specific packaging needs, we can design the packaging according to the customer's requirements. This includes changing the packaging method or using the customer's specified transportation method to meet the customer's personalized needs.

Through the above measures, Chenghao Optoelectronic ensures the safety and integrity of the CH430WQ12A1-CT module during transportation. We are committed to providing customers with high-quality products and services to ensure that every delivery can exceed customer expectations.

FAQ:

Q: What is the display technology used in the CH430WQ12A1-CT?

A: The CH430WQ12A1-CT utilizes IPS (In-Plane Switching) technology, which provides wide viewing angles and excellent color

reproduction. This makes it suitable for applications where display clarity and color accuracy are critical .

Q:What are the dimensions of the CH430WQ12A1-CT module?

A:The dimensions of the CH430WQ12A1-CT module are 105.5 mm x 67.2 mm x 4.95 mm. The visible area measures 96.04 mm x 54.86 mm, and the active area is 95.04 mm x 53.86 mm .

Q:Is the CH430WQ12A1-CT suitable for outdoor use?

A:Yes, the CH430WQ12A1-CT is designed to operate in a wide temperature range of -20 to +70 °C, making it suitable for various outdoor applications. However, for optimal performance in direct sunlight, additional considerations such as backlight brightness may be necessary .

Q:What is the process for returning a defective CH430WQ12A1-CT module?

A:If you encounter a defective module, please contact our customer service team within 30 days of delivery. We will guide you through the return process, which includes providing a replacement for any verified defects .

Q:Can the CH430WQ12A1-CT be integrated with other devices?

A:Yes, the CH430WQ12A1-CT supports a 24-bit Parallel RGB interface, allowing for easy integration with various microcontrollers and processors. Our technical support team can assist with integration queries to ensure compatibility with your specific application .

Q:What kind of certifications does the CH430WQ12A1-CT have?

A:The CH430WQ12A1-CT has undergone rigorous quality inspections and has received CE and RoHS certifications, ensuring compliance with international safety and environmental standards .

Q:How can I request a sample of the CH430WQ12A1-CT?

A:Customers interested in evaluating the CH430WQ12A1-CT can request a sample by contacting our sales team. We are happy to provide samples to help you assess the product's suitability for your application .

Q:What types of applications is the CH430WQ12A1-CT suitable for?

A:The CH430WQ12A1-CT is versatile and can be used in various applications, including industrial control systems, smart home devices, medical equipment, and instrumentation. Its adaptability makes it a popular choice across multiple industries .

Q:What is the expected lifespan of the CH430WQ12A1-CT?

A:The expected lifespan of the CH430WQ12A1-CT module is typically over 50,000 hours under normal operating conditions. This longevity makes it a reliable choice for long-term applications .

Q: How do I access technical documentation for the CH430WQ12A1-CT?

A: Technical documentation, including datasheets and user manuals for the CH430WQ12A1-CT, can be accessed through our website or requested from our technical support team. We provide comprehensive resources to assist you in utilizing the module effectively .



Shenzhen ChengHao Optoelectronic Co., Ltd.



+86 755-27806536



add@chenghaolcm.com



chenghaolcd.com

7th floor, building C5, Hengfeng Industrial City, Hangcheng street, Bao'an District, Shenzhen