



Customizable 360x360 Round IPS Display for Smart Home Applications - China Supplier

Our Product Introduction

for more products please visit us on chenghaolcd.com

Basic Information

- Place of Origin: China, Shenzhen
- Brand Name: Chenghao Optoelectronic
- Certification: CE RoHS
- Model Number: CH132HV01A
- Minimum Order Quantity: 100 Pcs
- Packaging Details: All the products are packed in right way to keep it safe. For small sizes of products we use tray + carton, For bigger sizes we use foam slot + carton. we also design packages according to customers' requirements
- Delivery Time: 7-15 working days
- Supply Ability: 300Kpcs/month



Product Specification

- Product Name: 360x360 Round IPS Display
- Viewing Direction: 80/80/80/80
- Display Mode: IPS /transmissive/ Normally Black
- Active Area Size: 33.48 * 33.48 Mm
- LCD Interface: SPI
- Resolution: 360 * 360 Dots
- Operating Temperature: -20 ~ +70 °C
- Visible Area Size: 33.88 * 33.88 Mm
- Storage Temperature: -30 ~ +80 °C
- Highlight: 360x360 Round IPS Display,
Customizable 360x360 Round IPS Display,
Smart Home Applications Round IPS Display



More Images



Product Description

Product Description:

CH132HV01A is a high-performance 1.32-inch 360*360 IPS color TFT small circular LCD display module designed for a variety of application scenarios. The module has a size of 25.98*38.54*1.6 mm and a viewing area of 33.88*33.88 mm, ensuring that users can get a clear visual experience. Its display mode is IPS/transmissive/normally black, supports wide viewing angles, and can provide consistent image quality in different environments.

The display module has a brightness of 300 cd/m² and good readability, making it suitable for use in various indoor environments with varying brightness. In addition, the operating temperature range of CH132HV01A is -20 to +70°C, and the storage temperature range is -30 to +80°C, allowing it to operate stably in harsh environments.



CH132HV01A also supports SPI interface for easy connection with other devices. The module not only supports sample provision, but can also be customized according to customer needs to meet the special requirements of different projects. Its wide range of application areas include industrial control, smart home, medical equipment, instrumentation, artificial intelligence, and Internet of Things devices, showing extremely high flexibility and adaptability.



Features:

Product features of CH132HV01A

Display size: The module is 1.32 inches, suitable for small devices, such as smart watches, wearable heart rate monitors, etc.

Resolution: It has a high resolution of 360*360 to ensure clear and delicate images.

Display technology: It adopts IPS (In-Plane Switching) technology to provide wide viewing angle and improve color performance.

Brightness: The brightness reaches 300 cd/m², which can maintain good readability in indoor environments with different light and dark.

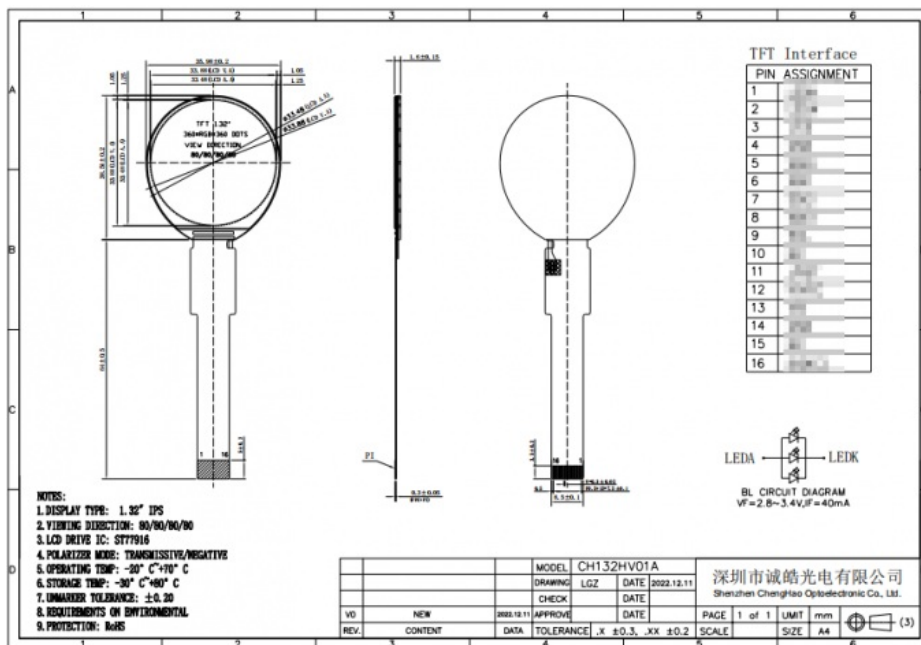
Interface type: Supports SPI interface for easy connection with other electronic devices.

Operating temperature range: It can work normally in an environment of -20 to +70°C, with strong adaptability.

Storage temperature range: The storage temperature can reach -30 to +80°C to ensure reliability under extreme conditions.

Customization support: It can be customized according to customer needs, including FPC shape, backlight brightness, and touch panel design.

Wide application fields: It is suitable for industrial control, smart home, medical equipment, instrumentation, artificial intelligence, and IoT devices and other industries.



Technical Parameters:

Visible area size:	33.88 * 33.88 mm
Active area size:	33.48 * 33.48 mm
Viewing Direction:	80/80/80/80
LCD Interface:	SPI
Storage Temperature:	-30 ~ +80 °C
Display Mode:	IPS /transmissive/ Normally Black
Module Size:	25.98 * 38.54 * 1.6 mm
Resolution:	360 * 360 Dots
Luminance:	300 Cd/m2
Operating Temperature:	-20 ~ +70 °C

Applications:

CH132HV01A is a versatile display module that is widely used in multiple industries due to its superior performance and flexible design. The following are the main application areas of this product:

Industrial control: In industrial automation equipment, CH132HV01A can be used to display real-time data, operation interface, and monitoring information to help operators better manage production processes.

Smart home: This module is suitable for smart home devices such as smart refrigerators, coffee machines, and other home appliances, providing a user-friendly interface and enhancing user experience.

Medical equipment: In the medical field, CH132HV01A can be used in equipment such as heart rate monitors and thermometers to display important health data and provide timely information for medical workers.

Instrumentation: In various measurement and detection equipment, this display module can be used for real-time data display to help users make accurate analysis and judgments.

Artificial intelligence: In smart robots and other AI devices, CH132HV01A can be used as a human-computer interaction interface to provide an intuitive operation experience and feedback.

IoT devices: With the rapid development of IoT, CH132HV01A is widely used in various connected devices to display sensor data and device status and improve intelligent management.

Automotive applications: The module is also suitable for vehicle display devices such as navigation systems and in-vehicle infotainment systems, providing clear visual information and improving driving safety and convenience.

Consumer electronics: In consumer products such as digital photo frames and portable electronic devices, CH132HV01A can provide high-quality display effects to meet users' visual needs.

Through the wide coverage of these application areas, **CH132HV01A** demonstrates its indispensable value and flexibility in modern technology.

Customization:

FPC Shape and Interface Type: The CH132HV01A supports customization of the FPC (Flexible Printed Circuit) shape and interface type according to specific customer requirements. This flexibility allows the module to better fit into the design of various devices,

ensuring compatibility with other components.

Display Parameter Adjustments: Customers can adjust certain parameters of the display module based on project needs, such as brightness and contrast. While the standard brightness is 300 cd/m², modifications can be made to meet specific visibility requirements in certain situations.

Appearance Design: The appearance of the CH132HV01A can also be customized, including the size and shape of the module. This allows customers to ensure that the display module matches the overall aesthetic of their product design.

Touch Panel Type: The module supports customization of different types of touch panels, such as capacitive or resistive touch panels. Customers can choose the most suitable touch technology based on the usage scenario to enhance user experience.

Packaging Customization: In addition to product customization, we also offer custom packaging services to meet customers' branding needs and market positioning. This includes the design of packaging, labels, and other related elements.

Technical Support and Services: Throughout the customization process, we provide comprehensive technical support to ensure that customers receive professional advice and guidance when selecting and implementing customization options. Our team will assist customers at every stage, from design to production.

Through these customization options, the CH132HV01A display module can better meet specific customer needs, enhancing its performance and applicability in various applications. We are committed to providing flexible solutions to support our customers' innovation and development.

FAQ:

What are the main technical specifications of CH132HV01A?

The CH132HV01A is a 1.32-inch IPS color TFT LCD display module with a resolution of 360x360 pixels, featuring a high brightness of 300 cd/m², and it operates reliably within a wide temperature range of -20°C to +70°C, making it suitable for various applications such as industrial control and medical devices.

Does the product come with a warranty?

Yes, the CH132HV01A is covered by a one-year warranty that addresses issues arising from manufacturing defects, ensuring that customers receive the necessary support during the warranty period.

What does the after-sales service include?

Our after-sales service encompasses installation guidance, troubleshooting, and product usage consultations. Our customer service team is always ready to assist you with any issues you may encounter while using the product.

How can I obtain technical support?

Customers can reach out to our technical support team via email or phone for assistance with installation, configuration, and other technical inquiries regarding the CH132HV01A. We provide professional advice to ensure you can use the product smoothly.

Is customization available for CH132HV01A?

Yes, the CH132HV01A supports various customization options, including the shape of the FPC, interface types, and touch panel types. This allows the module to better meet specific customer needs and device designs.

What should I do if the product is damaged during shipping?

If you find that the CH132HV01A is damaged upon receipt, please contact our customer service team immediately. We will assist you in handling returns and replacements to ensure you receive a fully functional product as soon as possible.

What is the expected lifespan of the CH132HV01A?

The CH132HV01A is designed for a lifespan of over 30,000 hours, ensuring long-term reliability under normal operating conditions. This makes it ideal for applications that require high durability.

Is the module suitable for outdoor use?

Yes, the high brightness and wide operating temperature range of the CH132HV01A make it well-suited for outdoor applications, where it can maintain good readability even in direct sunlight.

In which industries can CH132HV01A be used?

The CH132HV01A is widely applicable across various industries, including industrial control, medical devices, automotive displays, and smart home technology, catering to different sector needs.

How can I place an order for the CH132HV01A?

Customers can place orders by contacting our sales team directly through our website or via email. We will provide detailed pricing, delivery timelines, and any other relevant information to facilitate your purchase.



Shenzhen ChengHao Optoelectronic Co., Ltd.



+86 755-27806536



add@chenghaolcm.com



chenghaolcd.com

7th floor, building C5, Hengfeng Industrial City, Hangcheng street, Bao'an District, Shenzhen