



High-Performance 1.32" Round LCD Display Module with 360x360 Resolution - Factory

Our Product Introduction

for more products please visit us on chenghaolcd.com

Basic Information

- Place of Origin: China, Shenzhen
- Brand Name: Chenghao Optoelectronic
- Certification: CE RoHS
- Model Number: CH132HV01A
- Minimum Order Quantity: 100 Pcs
- Packaging Details: All the products are packed in right way to keep it safe. For small sizes of products we use tray + carton, For bigger sizes we use foam slot + carton. we also design packages according to customers' requirements
- Delivery Time: 7-15 working days
- Supply Ability: 300Kpcs/month



Product Specification

- Product Name: 1.32" Round LCD Display Module
- Viewing Direction: 80/80/80/80
- LCD Interface: SPI
- Display Mode: IPS /transmissive/ Normally Black
- Module Size: 25.98 * 38.54 * 1.6 Mm
- Visible Area Size: 33.88 * 33.88 Mm
- Storage Temperature: -30 ~ +80 °C
- Active Area Size: 33.48 * 33.48 Mm
- Luminance: 300 Cd/m2
- Highlight: 360x360 Round LCD Display Module, 1.32" Round LCD Display Module, High-Performance Round LCD Display Module

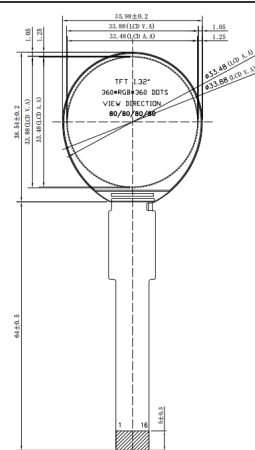
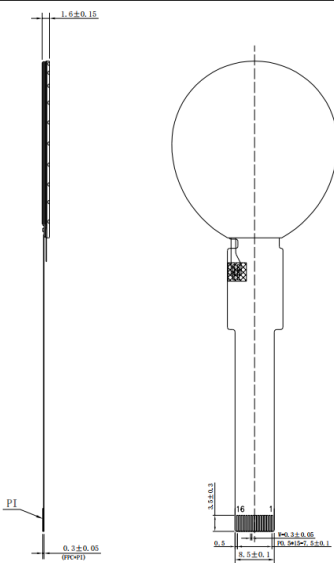


More Images



Product Description

Product Description:

<p>CH132HV01A is a high-performance 1.32-inch 360°*360 IPS color TFT small circular LCD display module designed for a variety of application scenarios. The module has a size of 25.98*38.54*1.6 mm and a viewing area of 33.88*33.88 mm, ensuring that users can get a clear visual experience. Its display mode is IPS/transmissive/normally black, supports wide viewing angles, and can provide consistent image quality in different environments.</p>		 <p>Top view diagram of the CH132HV01A display module. The diagram shows a circular display area with a diameter of 33.88 mm (1.33 inches). The overall module size is 25.98 mm (1.02 inches) by 38.54 mm (1.52 inches). The display area is 360°*360 IPS color TFT. The viewing angle is 80°/80°/80°. The diagram also shows the mounting holes and the overall thickness of the module.</p>
<p>The display module has a brightness of 300 cd/m² and good readability, making it suitable for use in various indoor environments with varying brightness. In addition, the operating temperature range of CH132HV01A is -20 to +70°C, and the storage temperature range is -30 to +80°C, allowing it to operate stably in harsh environments.</p>		
 <p>Bottom view diagram of the CH132HV01A display module. The diagram shows the mounting holes and the overall dimensions of the module. The mounting holes are 0.3 mm (0.01 inches) in diameter. The overall dimensions are 25.98 mm (1.02 inches) by 38.54 mm (1.52 inches). The diagram also shows the viewing area and the overall thickness of the module.</p>		<p>CH132HV01A also supports SPI interface for easy connection with other devices. The module not only supports sample provision, but can also be customized according to customer needs to meet the special requirements of different projects. Its wide range of application areas include industrial control, smart home, medical equipment, instrumentation, artificial intelligence and Internet of Things devices, showing extremely high flexibility and adaptability.</p>

Features:

Product features of CH132HV01A

Display size: The module is 1.32 inches, suitable for small devices, such as smart watches, wearable heart rate monitors, etc.

Resolution: It has a high resolution of 360°*360 to ensure clear and delicate images.

Display technology: It adopts IPS (In-Plane Switching) technology to provide wide viewing angle and improve color performance.

Brightness: The brightness reaches 300 cd/m², which can maintain good readability in indoor environments with different light and dark.

Interface type: Supports SPI interface for easy connection with other electronic devices.

Operating temperature range: It can work normally in an environment of -20 to +70°C, with strong adaptability.

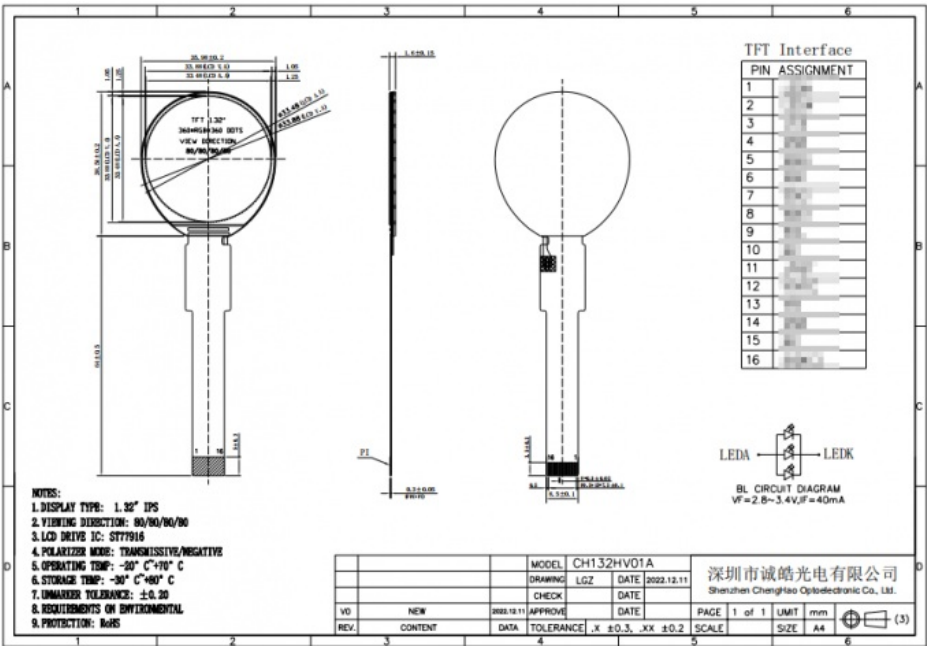
Storage temperature range: The storage temperature can reach -30 to +80°C to ensure reliability under extreme conditions.

Customization support: It can be customized according to customer needs, including FPC shape, backlight brightness and touch panel design.

Wide application fields: It is suitable for industrial control, smart home, medical equipment, instrumentation, artificial intelligence and IoT devices and other industries.

Technical Parameters:

Visible Area Size	33.88 * 33.88 Mm
Display Mode	IPS /transmissive/ Normally Black
Active Area Size	33.48 * 33.48 Mm
Module Size	25.98 * 38.54 * 1.6 Mm
Resolution	360 * 360 Dots
Storage Temperature	-30 ~ +80 °C
Luminance	300 Cd/m2
Viewing Direction	80/80/80/80
LCD Interface	SPI
Operating Temperature	-20 ~ +70 °C



Applications:

CH132HV01A Display Module Overview is a versatile display module widely utilized across various industries due to its exceptional performance and flexible design. Explore the main application areas of this product below:

Industrial Control: In industrial automation equipment, CH132HV01A enables real-time data display, operation interface visualization, and monitoring information to enhance production process management.

Smart Home: Ideal for smart home devices like smart refrigerators and coffee machines, this module offers a user-friendly interface, elevating user experience at home.

Medical Equipment: Used in medical equipment such as heart rate monitors and thermometers to show critical health data and provide timely insights for medical professionals.

Instrumentation: Employed in various measurement and detection equipment, CH132HV01A facilitates real-time data visualization for accurate analysis and informed decisions.

Artificial Intelligence: In smart robots and other AI devices, CH132HV01A acts as a human-computer interaction interface, offering intuitive operation experience and feedback.

IoT Devices: With the IoT's growth, CH132HV01A finds extensive use in connected devices for displaying sensor data, device status, and enhancing intelligent management.

Automotive Applications: Suitable for vehicle display systems like navigation and infotainment, providing clear visual information to enhance driving safety and convenience.

Consumer Electronics: In products like digital photo frames and portable devices, CH132HV01A delivers high-quality display effects to fulfill users' visual requirements.

Through its wide range of applications, CH132HV01A epitomizes its essential value and adaptability in modern technology.

Support and Services:

Support and Services for CH132HV01A

When collaborating with us on the CH132HV01A display module, customers can expect a comprehensive range of support and services designed to enhance their experience and meet their specific needs. Here are the key services offered:

Customization Services: We provide extensive customization options for the CH132HV01A, including modifications to the FPC shape and structure, backlight brightness adjustments, and interface definitions. This ensures that the display module can be tailored to fit seamlessly into various applications and equipment.

Technical Support: Our dedicated technical support team is available to assist customers throughout the development and integration process. This includes guidance on design specifications, troubleshooting, and optimizing the module's performance in specific applications.

Sample Provision: We offer sample modules to our customers, allowing them to evaluate the product's performance and compatibility before committing to larger orders. This helps ensure that the final product meets their expectations and requirements.

Quality Assurance: We adhere to strict quality control measures during the manufacturing process to ensure that each CH132HV01A module meets high standards of reliability and performance. Customers can trust that they are receiving a product that has undergone rigorous testing.

Flexible Packaging and Transportation Options: Understanding the diverse needs of our customers, we offer customizable packaging and transportation solutions to ensure that the modules arrive safely and in optimal condition. This flexibility helps accommodate different logistical requirements.

Industry Expertise: With extensive experience in various industries, including industrial control, smart home technology, medical devices, and IoT applications, we provide valuable insights and recommendations tailored to specific market needs. Our expertise helps customers make informed decisions regarding their projects.

Ongoing Communication: We prioritize open communication with our customers throughout the collaboration process. Regular updates and feedback sessions ensure that we are aligned with customer expectations and can address any concerns promptly.

By offering these comprehensive support and services, we aim to create a productive and satisfying partnership with our customers, ensuring that the CH132HV01A display module meets their unique needs and application potential.

FAQ:

What are the main features of the CH132HV01A display module?

The CH132HV01A is a 1.32-inch IPS color TFT LCD module with a resolution of 360x360. It supports multi-touch functionality, features high-brightness backlighting suitable for sunlight readability, and operates reliably in a wide temperature range of -20°C to +70°C.

What is the warranty policy for the CH132HV01A?

We offer a one-year warranty for the CH132HV01A. During the warranty period, if the product exhibits any manufacturing defects, we will cover the cost of repair or replacement.

How can I obtain technical support if I encounter issues with the CH132HV01A?

Customers can reach out to our technical support team through our official website or customer service hotline. We provide professional technical assistance and troubleshooting services to help resolve any issues encountered during use.

Does the CH132HV01A support customization?

Yes, the CH132HV01A supports various customization options, including modifications to the FPC shape, backlight brightness adjustments, interface types, and touch panel designs. Customers can customize the module according to their specific needs to ensure it fits their applications.

How can I request a sample for evaluation?

Customers can request samples through our sales team. We encourage customers to test samples before placing bulk orders to ensure that the performance and compatibility meet their expectations.

What are the typical application fields for the CH132HV01A?

The CH132HV01A is widely used in industrial control, smart home applications, medical devices, and IoT equipment. Its high performance and reliability make it suitable for various industry needs.

What is the brightness level of the CH132HV01A?

The standard brightness of the CH132HV01A is 300 cd/m², providing clear display performance under various lighting conditions. We can also adjust the backlight brightness based on customer requirements.

How should I maintain and care for the CH132HV01A?

To ensure the long-term stable operation of the CH132HV01A, it is recommended to clean the display screen regularly and avoid using it in extreme temperatures or humid environments. Detailed maintenance guidelines can be obtained from our technical support team.

What types of interfaces does the CH132HV01A support?

The CH132HV01A supports various interface types, including SPI. Customers can choose the appropriate interface type based on their device requirements.



Shenzhen ChengHao Optoelectronic Co., Ltd.



+86 755-27806536



add@chenghaolcm.com



chenghaolcd.com

7th floor, building C5, Hengfeng Industrial City, Hangcheng street, Bao'an District, Shenzhen