



1.32" IPS Color TFT LCD Panel with 360x360 Resolution - Factory Supply

Our Product Introduction

for more products please visit us on chenghaolcd.com

Basic Information

- Place of Origin: China, Shenzhen
- Brand Name: Chenghao Optoelectronic
- Certification: CE RoHS
- Model Number: CH132HV01A
- Minimum Order Quantity: 100 Pcs
- Packaging Details: All the products are packed in right way to keep it safe. For small sizes of products we use tray + carton, For bigger sizes we use foam slot + carton. we also design packages according to customers' requirements
- Delivery Time: 7-15 working days
- Supply Ability: 300Kpcs/month



Product Specification

- Product Name: Color TFT LCD Panel
- Luminance: 300 Cd/m²
- Resolution: 360 * 360 Dots
- Visible Area Size: 33.88 * 33.88 Mm
- Display Mode: IPS /transmissive/ Normally Black
- Viewing Direction: 80/80/80/80
- Module Size: 25.98 * 38.54 * 1.6 Mm
- Operating Temperature: -20 ~ +70 °C
- Storage Temperature: -30 ~ +80 °C
- Highlight: TFT LCD Panel Factory Supply ,
1.32" IPS Color TFT LCD Panel ,
360x360 Resolution TFT LCD Panel



More Images





Product Description

Product Description:

CH132HV01A is a high-performance 1.32-inch 360*360 IPS color TFT small circular LCD display module designed for a variety of application scenarios.

The module has a size of 25.98*38.54*1.6 mm and a viewing area of 33.88*33.88 mm, ensuring that users can get a clear visual experience.

Its display mode is IPS/transmissive/normally black, supports wide viewing angles, and can provide consistent image quality in different environments.

The display module has a brightness of 300 cd/m² and good readability, making it suitable for use in various indoor environments with varying brightness.

In addition, the operating temperature range of CH132HV01A is -20 to +70°C, and the storage temperature range is -30 to +80°C, allowing it to operate stably in harsh environments.

CH132HV01A also supports SPI interface for easy connection with other devices. The module not only supports sample provision, but can also be customized according to customer needs to meet the special requirements of different projects.

Features:

Product features of CH132HV01A

Display size: The module is 1.32 inches, suitable for small devices, such as smart watches, wearable heart rate monitors, etc.

Resolution: It has a high resolution of 360*360 to ensure clear and delicate images.

Display technology: It adopts IPS (In-Plane Switching) technology to provide wide viewing angle and improve color performance.

Brightness: The brightness reaches 300 cd/m², which can maintain good readability in indoor environments with different light and dark.

Interface type: Supports SPI interface for easy connection with other electronic devices.

Operating temperature range: It can work normally in an environment of -20 to +70°C, with strong adaptability.

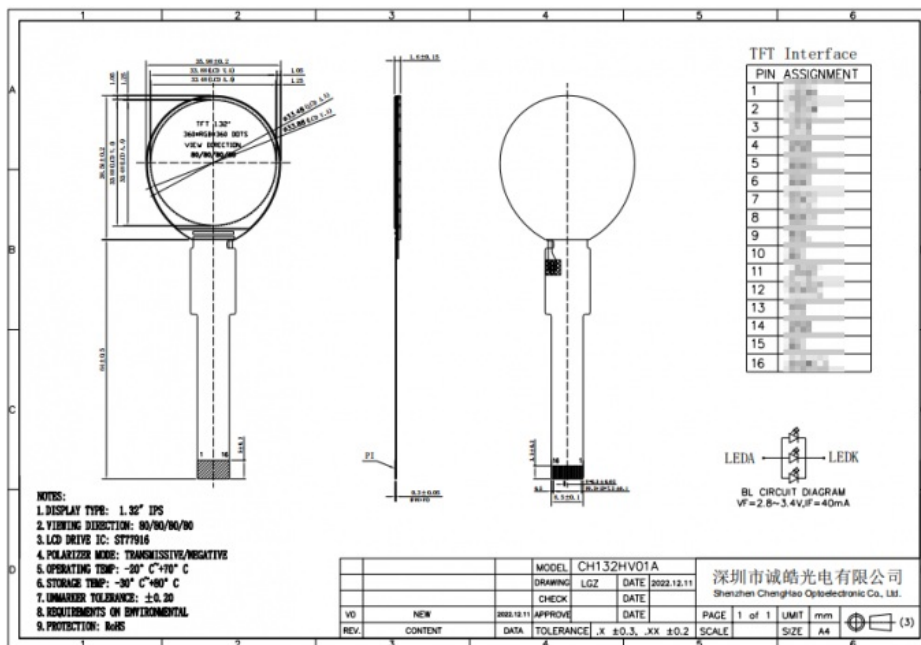
Storage temperature range: The storage temperature can reach -30 to +80°C to ensure reliability under extreme conditions.

Customization support: It can be customized according to customer needs, including FPC shape, backlight brightness and touch panel design.

Wide application fields: It is suitable for industrial control, smart home, medical equipment, instrumentation, artificial intelligence and IoT devices and other industries.

Technical Parameters:

Luminance	300 Cd/m ²
Storage Temperature	-30 ~ +80 °C
Resolution	360 * 360 Dots
LCD Interface	SPI
Active Area Size	33.48 * 33.48 Mm
Visible Area Size	33.88 * 33.88 Mm
Viewing Direction	80/80/80/80
Operating Temperature	-20 ~ +70 °C
Display Mode	IPS /transmissive/ Normally Black
Module Size	25.98 * 38.54 * 1.6 Mm



Applications:

CH132HV01A is a versatile display module that is widely used in multiple industries due to its superior performance and flexible design. The following are the main application areas of this product:

Industrial control: In industrial automation equipment, CH132HV01A can be used to display real-time data, operation interface and monitoring information to help operators better manage production processes.

Smart home: This module is suitable for smart home devices such as smart refrigerators, coffee machines and other home appliances, providing a user-friendly interface and enhancing user experience.

Medical equipment: In the medical field, CH132HV01A can be used in equipment such as heart rate monitors and thermometers to display important health data and provide timely information for medical workers.

Instrumentation: In various measurement and detection equipment, this display module can be used for real-time data display to help users make accurate analysis and judgments.

Artificial intelligence: In smart robots and other AI devices, CH132HV01A can be used as a human-computer interaction interface to provide intuitive operation experience and feedback.

IoT devices: With the rapid development of IoT, CH132HV01A is widely used in various connected devices to display sensor data and device status and improve intelligent management.

Automotive applications: The module is also suitable for vehicle display devices such as navigation systems and in-vehicle infotainment systems, providing clear visual information and improving driving safety and convenience.

Consumer electronics: In consumer products such as digital photo frames and portable electronic devices, CH132HV01A can provide high-quality display effects to meet users' visual needs.

Through the wide coverage of these application areas, CH132HV01A demonstrates its indispensable value and flexibility in modern technology.

Customization:

Customization Introduction of CH132HV01A

The CH132HV01A is a versatile display module that offers a range of customization options to meet the specific needs of various applications. Below are the key customization features available for this product:

FPC Shape and Structure Customization: We can redesign the flexible printed circuit (FPC) shape and structure based on the customer's project requirements, ensuring a perfect fit for the installation equipment. This customization enhances compatibility and assembly efficiency.

Backlight Brightness Adjustment: The backlight brightness of the CH132HV01A can be tailored according to the specific needs of the application. While the standard brightness is 300 cd/m², we can provide options for higher or lower brightness levels to suit different lighting environments.

LCD Interface Definition: The module supports various interface types, including SPI. We can define the appropriate LCD interface type based on the requirements of the customer's devices, ensuring seamless connectivity with other electronic components.

Touch Panel Design: For applications requiring touch functionality, we offer customizable touch panel solutions. Customers can choose between capacitive or resistive touch technologies and adjust the design and functionality of the touch panel according to their specific needs.

Appearance Design Customization: The external design of the CH132HV01A can also be customized to align with the customer's brand and product image. This includes modifications to the module's color, shape, and branding elements to enhance market competitiveness.

Sample Support: We provide sample support, allowing customers to test the customized modules before proceeding to mass production. This ensures that the products meet the expected performance and functional requirements.

Through these customization options, the CH132HV01A can flexibly adapt to the needs of various industries, such as industrial control, smart home applications, and medical devices, showcasing its broad application potential and market value.

FAQ:

Q: What is the model number of this IPS LCD Display?
A: The model number is CH132HV01A.
Q: Where is this IPS LCD Display manufactured?
A: It is manufactured in China, Shenzhen.
Q: What certifications does this IPS LCD Display have?
A: It has CE and RoHS certifications.
Q: What is the minimum order quantity for this IPS LCD Display?
A: The minimum order quantity is 100 pcs.



Shenzhen ChengHao Optoelectronic Co., Ltd.



+86 755-27806536



add@chenghaolcm.com



chenghaolcd.com

7th floor, building C5, Hengfeng Industrial City, Hangcheng street, Bao'an District, Shenzhen