



## 600 Nits High Brightness TFT LCD Display 5.5 Inch 1080x1920 Resolutions

### Our Product Introduction

for more products please visit us on [chenghaolcd.com](http://chenghaolcd.com)

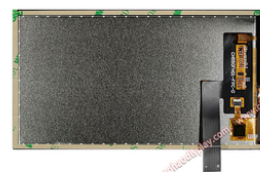
#### Basic Information

- Place of Origin: China Shenzhen
- Brand Name: Chenghao Optoelectronic
- Certification: RoHS CE FCC
- Model Number: CH550FH01A-CTB
- Minimum Order Quantity: 100 pcs
- Packaging Details: All the products are packed in right way to keep it safe. For small sizes of products we use tray + carton, For bigger sizes we use foam slot + carton. we also design packages according to customers' requirements
- Delivery Time: 3~7 Days
- Payment Terms: TT
- Supply Ability: 300K pcs/month



#### Product Specification

- Product Name: High Brightness TFT LCD Display
- Resolution: 1080\*1920 Dots
- Storage Temperature: -30 ~ +80°C
- Lcd Interface: MIPI
- Touch Panel Type: Capacitive
- Transmittance: ≥87%
- Display Mode: IPS / Transmissive / Normally Black
- Luminance: 600 Cd/m2
- Touch Panel Interface: I2C
- Highlight: 600 Nits TFT LCD Display,  
1080x1920 TFT LCD Display,  
5.5 Inch TFT LCD Display





#### More Images





## Product Description

### Product Description:

	<p>The CH550FF01A-CTB is a high-performance 5.5-inch full HD touch display module designed to meet modern display needs. The module has a resolution of up to 1080*1920 pixels and uses IPS (In-Plane Switching) technology to ensure wide viewing angles and excellent color performance, making the image more vivid and delicate, suitable for various application scenarios such as industrial control, medical equipment and smart home.</p> <p>In terms of appearance design, the size of the CH550FF01A-CTB is 77.1395.39 mm, and the active area and visible area are both 68.04*120.96 mm. The compact design makes it easy to integrate into different devices. The module is also equipped with a capacitive touch panel that supports multi-touch, which enhances the user interaction experience and makes the operation more intuitive and convenient.</p> <p>In terms of brightness, the maximum brightness of the CH550FF01A-CTB can reach 600 cd/m<sup>2</sup>, ensuring clear readability under various lighting conditions. This feature enables it to maintain good display effects even in direct sunlight, suitable for outdoor or high-light environments.</p>
<p>In addition, the module has an operating temperature range of -20 to +70°C and a storage temperature range of -30 to +80°C, enabling it to operate stably in various extreme environments, ensuring the reliability and durability of the product. This feature is particularly suitable for fields with strict environmental requirements such as industry and medical care.</p> <p>CH550FF01A-CTB also supports a variety of customization options, and customers can adjust the design of the module according to specific needs, including FPC shape, backlight brightness, and touch panel design. This flexibility enables the product to meet the personalized needs of different customers and further enhances its market competitiveness.</p> <p>In summary, CH550FF01A-CTB has become an important choice in modern display technology with its excellent display performance, good user experience and wide application potential, and is suitable for the needs of a variety of industries. Whether in the field of industrial control, medical equipment or smart home, CH550FF01A-CTB can provide excellent solutions to meet the high standards of users.</p>	

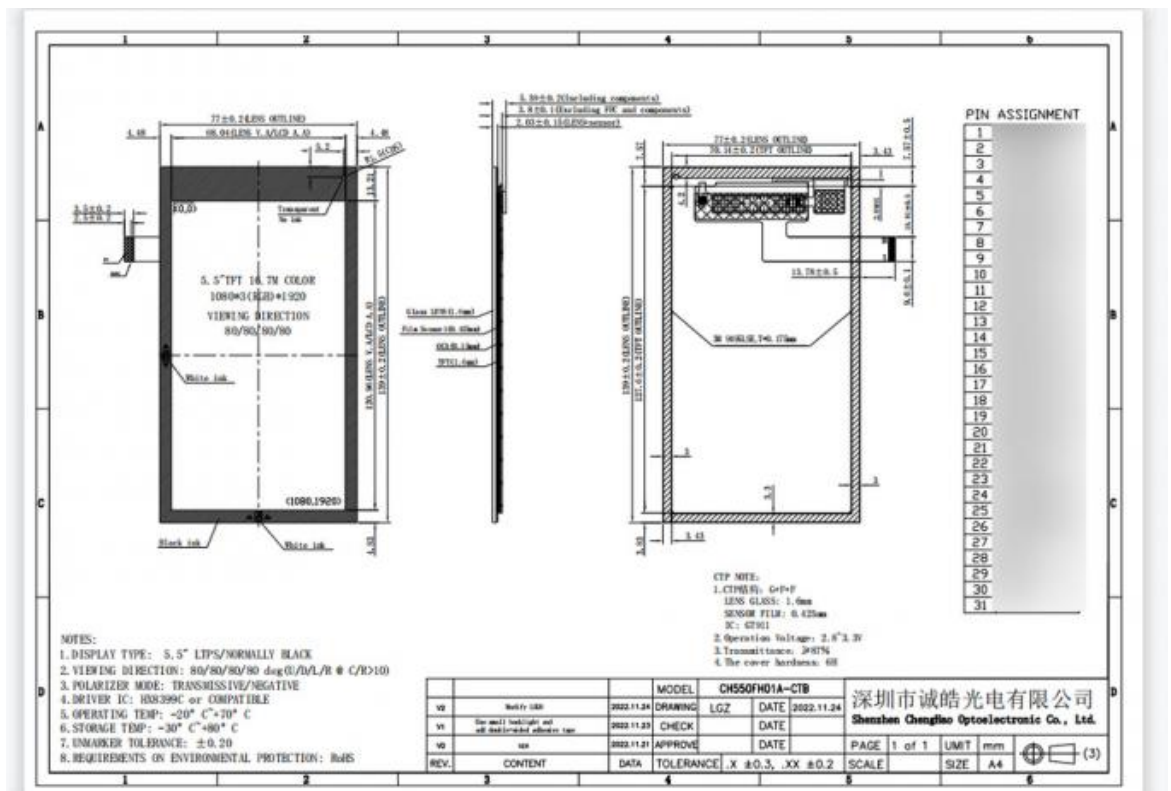
### Features:

The product features of CH550FF01A-CTB mainly include the following aspects:

- (1)High resolution: The module provides a full HD resolution of 1080\*1920, ensuring clear image details and suitable for a variety of application scenarios.
- (2)Display technology: Adopting IPS technology, it provides wide viewing angle and excellent color performance, making the display effect more vivid and realistic.
- (3)Touch screen function: Equipped with a capacitive touch panel, it supports multi-touch, enhances the user interaction experience, and makes the operation more convenient.
- (4)Brightness performance: The maximum brightness can reach 600 cd/m<sup>2</sup>, ensuring readability under different lighting conditions, suitable for outdoor and strong light environments.
- (5)Temperature adaptability: The module has an operating temperature range of -20 to +70°C and a storage temperature range of -30 to +80°C, ensuring stability in various extreme environments.
- (6)Compact design: The module size is 77.1395.39 mm, and the active and visible areas are both 68.04\*120.96 mm, which is easy to integrate into various devices.
- (7)Customization options: Support a variety of customization services, including FPC design, backlight brightness adjustment, and personalized design of touch panels to meet customers' specific needs.
- (8)Wide application: The module is suitable for industrial control, medical equipment, smart home and other fields to meet the diverse needs of modern display technology.

### Technical Parameters:

Touch Panel Interface	I2C
Operating Temperature	-20 ~ +70°C
Touch Panel Type	Capacitive
Touch panel thickness	1.6 Mm
Luminance	600 Cd/m2
Viewing Direction	80/80/80/80
Resolution	1080*1920 Dots
Lcd Interface	MIPI
Storage Temperature	-30 ~ +80°C
Transmittance	≥87%



## Applications:

The Small LCD Touch Screen has various product application occasions and scenarios due to its exceptional attributes. The product can be used in the automotive industry as a dashboard display or in-car entertainment system. It can also be used in medical devices such as ultrasound machines or portable monitors. The product can be used for point-of-sale systems or gaming machines. The product can also be used for home automation systems such as smart thermostats or security systems. The Small LCD Touch Screen can be utilized in various industrial applications such as control panels or as an HMI (Human Machine Interface) for machinery.

## FAQ:

**Q: What is the brand name of this product?**

A: The brand name of this product is Chenghao Optoelectronic.

**Q: What is the model number of this product?**

A: The model number of this product is CH550FH01A-CTB.

**Q: Where is this product manufactured?**

A: This product is manufactured in China Shenzhen.

**Q: What certifications does this product have?**

A: This product has RoHS, CE, and FCC certifications.

**Q: What is the minimum order quantity for this product?**

A: The minimum order quantity for this product is 100 pcs.

**Q: What is the packaging method for this product?**

A: All the products are packed in the right way to keep them safe. For small sizes of products, we use tray + carton. For bigger sizes, we use foam slot + carton. We also design packages according to customers' requirements.

**Q: What is the delivery time for this product?**

A: The delivery time for this product is 3~7 days.

**Q: What are the payment terms for this product?**

A: The payment terms for this product are TT.

**Q: What is the supply ability of this product?**

A: The supply ability of this product is 300K pcs/month.



**Shenzhen ChengHao Optoelectronic Co., Ltd.**



+86 755-27806536



add@chenghaolcm.com



chenghaolcd.com

7th floor, building C5, Hengfeng Industrial City, Hangcheng street, Bao'an District, Shenzhen