



## 5.5 Inch Small Touch Screen 1080\*1920 Full HD Tft Lcd With MIPI Interface

### Our Product Introduction

for more products please visit us on [chenghaolcd.com](http://chenghaolcd.com)

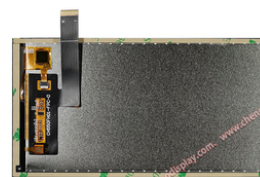
#### Basic Information

- Place of Origin: China Shenzhen
- Brand Name: Chenghao Optoelectronic
- Certification: RoHS CE FCC
- Model Number: CH550FH01A-CTB
- Minimum Order Quantity: 100 pcs
- Packaging Details: All the products are packed in right way to keep it safe. For small sizes of products we use tray + carton, For bigger sizes we use foam slot + carton. we also design packages according to customers' requirements
- Delivery Time: 3~7 Days
- Payment Terms: TT
- Supply Ability: 300K pcs/month



#### Product Specification

- Product Name: 5.5 Inch Small Touch Screen
- Storage Temperature: -30 ~ +80°C
- Viewing Direction: 80/80/80/80
- Operating Temperature: -20 ~ +70°C
- Display Mode: IPS / Transmissive / Normally Black
- Resolution: 1080\*1920 Dots
- Touch Panel Interface: I2C
- Lcd Interface: MIPI
- Touch Panel Thickness: 1.6 Mm
- Highlight: MIPI Interface Tft Lcd,  
5.5 Inch Small Touch Screen,  
1080\*1920 Full HD Tft Lcd



#### More Images





## Product Description

### Product Description:

The CH550FF01A-CTB is an advanced 5.5-inch Full HD touch display module designed to meet modern display needs. The module has a high resolution of 1080\*1920, ensuring clear image details and suitable for a variety of application scenarios, such as industrial control, medical equipment and smart home. Using IPS technology, the CH550FF01A-CTB provides a wide viewing angle and excellent color performance, making the display effect more vivid and realistic. The module has a brightness of up to 600 cd/m<sup>2</sup>, ensuring good readability under different lighting conditions, especially suitable for outdoor use. It is also equipped with a capacitive touch panel and supports multi-touch, which enhances the user interaction experience and makes the operation more intuitive.



In addition, the module has an operating temperature range of -20 to +70°C and a storage temperature range of -30 to +80°C, ensuring its stability in various extreme environments. The CH550FF01A-CTB has a size of 771395.39 mm and a compact design, which is easy to integrate into different devices. With flexible customization options, customers can adjust the design of the module according to their specific needs, further enhancing its market competitiveness. In short, CH550FF01A-CTB has become an important choice in modern display technology with its excellent display performance and wide application potential.

### Features:

The product features of CH550FF01A-CTB mainly include the following aspects:

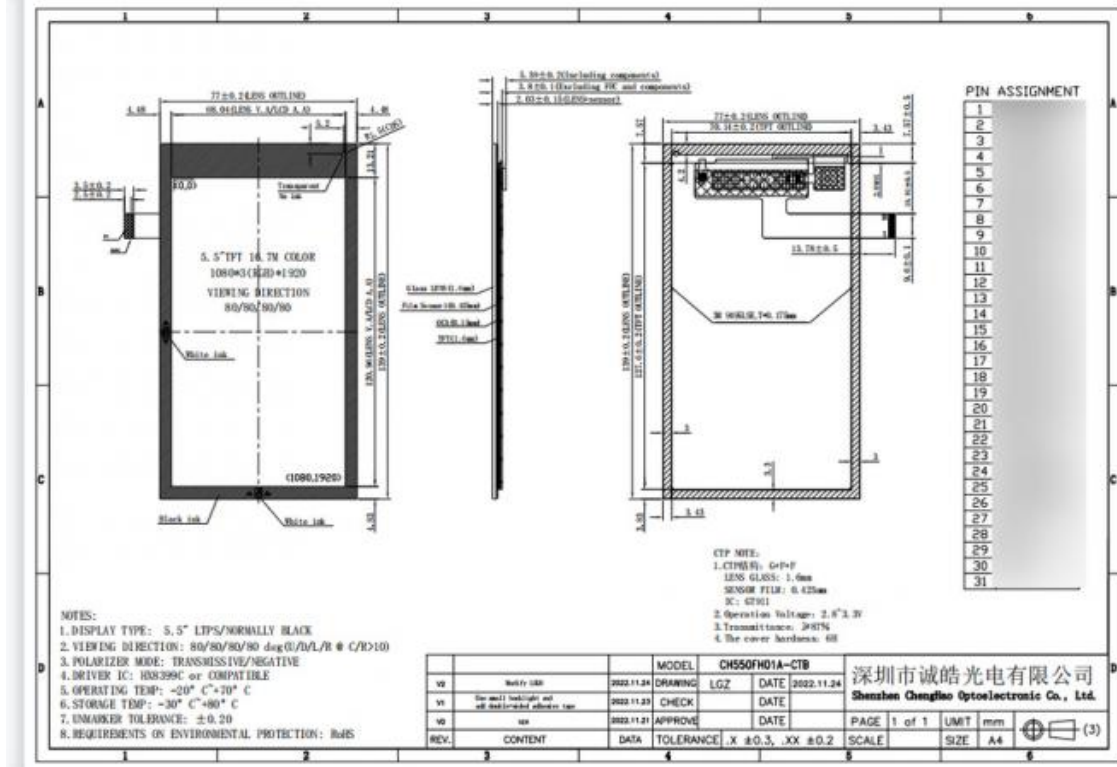
- \* High resolution: The module provides a full HD resolution of 1080\*1920, ensuring clear image details and suitable for a variety of application scenarios.
- \* IPS display technology: Adopting IPS (plane switching) technology, it provides wide viewing angle and excellent color performance, making the display effect more vivid and realistic.
- \* Touch function: Equipped with a capacitive touch panel, it supports multi-touch, enhances the user interaction experience, and makes the operation more convenient.
- \* Brightness performance: The maximum brightness can reach 600 cd/m<sup>2</sup>, ensuring readability under different lighting conditions, suitable for outdoor and strong light environments.
- \* Temperature adaptability: The module has an operating temperature range of -20 to +70°C and a storage temperature range of -30 to +80°C, ensuring stability in various extreme environments.
- \* Compact design: The module size is 771395.39 mm, and the active and visible areas are both 68.04\*120.96 mm, which is easy to integrate into various devices.
- \* Customization options: Supports a variety of customization services, including FPC design, backlight brightness adjustment, and personalized design of touch panels to meet customers' specific needs.
- \* Wide range of application areas: This module is suitable for industrial control, medical equipment, smart home and other fields to meet the diverse needs of modern display technology.

Through the above features, CH550FF01A-CTB demonstrates its importance and wide application potential in modern display technology.

### Technical Parameters:

Luminance	600 Cd/m <sup>2</sup>
-----------	-----------------------

Display Mode	IPS / Transmissive / Normally Black
Transmittance	≥87%
Operating Temperature	-20 ~ +70°C
Touch panel thickness	1.6 Mm
Viewing Direction	80/80/80/80
Touch Panel Type	Capacitive
Touch Panel Interface	I2C
Lcd Interface	MIPI
Storage Temperature	-30 ~ +80°C



## Applications:

This LCD module is ideal for a variety of different applications. It is also well suited for industrial applications such as automation systems and control panels, and can also be used in consumer electronics such as smartphones, tablets and laptops, and the CH550FH01A-CTB can also be used in medical devices, automotive displays and gaming consoles.

The CH550FH01A-CTB is an extremely versatile product that can be used in a variety of scenarios. It is ideal for use in outdoor environments as it has an operating temperature range of -20 to +70°C. This means that it can be used in almost any climate or weather conditions. It is also a great choice for indoor applications such as retail displays, digital signage and interactive kiosks.

## FAQ:

**Q1: What is the brand name of this product?**

A1: The brand name of this product is Chenghao Optoelectronic.

**Q2: Where is this product manufactured?**

A2: This product is manufactured in Shenzhen, China.

**Q3: What certifications does this product have?**

A3: This product has RoHS, CE, and FCC certifications.

**Q4: What is the minimum order quantity for this product?**

A4: The minimum order quantity for this product is 100 pieces.

**Q5: What is the delivery time for this product?**

A5: The delivery time for this product is 3 to 7 days.

**Q6: What are the payment terms for this product?**

A6: The payment terms for this product are TT.

**Q7: What is the packaging of this product?**

A7: All the products are packed in the right way to keep it safe. For small sizes of products, we use tray + carton. For bigger sizes, we use foam slot + carton. We also design packages according to customers' requirements.

**Q8: What is the supply ability of this product?**

A8: The supply ability of this product is 300K pieces per month.



**Shenzhen ChengHao Optoelectronic Co., Ltd.**



+86 755-27806536



add@chenghaolcm.com



chenghaolcd.com

7th floor, building C5, Hengfeng Industrial City, Hangcheng street, Bao'an District, Shenzhen