



MIPI Lcd Touch Display Module 1080x1920 Pixels 5.5 Inch IPS TFT Screen

Our Product Introduction

for more products please visit us on chenghaolcd.com

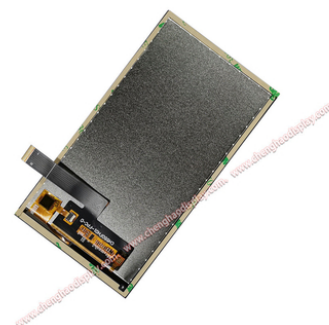
Basic Information

- Place of Origin: China Shenzhen
- Brand Name: Chenghao Optoelectronic
- Certification: RoHS CE FCC
- Model Number: CH550FH01A-CTB
- Minimum Order Quantity: 100 pcs
- Packaging Details: All the products are packed in right way to keep it safe. For small sizes of products we use tray + carton, For bigger sizes we use foam slot + carton. we also design packages according to customers' requirements
- Delivery Time: 3~7 Days
- Payment Terms: TT
- Supply Ability: 300K pcs/month



Product Specification

- Product Name: MIPI Lcd Touch Display Module
- Viewing Direction: 80/80/80/80
- Storage Temperature: -30 ~ +80°C
- Touch Panel Type: Capacitive
- Display Mode: IPS / Transmissive / Normally Black
- Touch Panel Thickness: 1.6 Mm
- Lcd Interface: MIPI
- Touch Panel Interface: I2C
- Operating Temperature: -20 ~ +70°C
- Highlight: IPS TFT Lcd Touch Display Module ,
1080x1920 Lcd Touch Display Module ,
5.5 inch Lcd Touch Display Module



More Images





Product Description

Product Description:

The CH550FF01A-CTB is a high-performance 5.5-inch full HD touch display module designed for modern display needs. With a resolution of 1080*1920 pixels, the module can clearly present rich image details and is suitable for multiple fields such as industrial control, medical equipment and smart home. Using IPS (In-Plane Switching) technology, the CH550FF01A-CTB provides a wide viewing angle display effect, ensuring vivid and realistic colors, and users can get a consistent visual experience at different angles. In terms of brightness, the maximum brightness of the module can reach 600 cd/m², ensuring good readability under various lighting conditions, especially suitable for outdoor use. It is also equipped with a capacitive touch panel and supports multi-touch, which enhances the user's interactive experience and makes the operation more intuitive and convenient.



In addition, the operating temperature range of the CH550FF01A-CTB is -20 to +70°C, and the storage temperature range is -30 to +80°C, ensuring its stability and reliability in various extreme environments. The module has a size of 77*139*5.39 mm, and its compact design makes it easy to integrate into different devices to meet diverse application requirements. The module also supports a variety of customization options. Customers can adjust the design of the module according to specific needs, including FPC design, backlight brightness, and personalized configuration of the touch panel to meet specific application requirements. In short, CH550FF01A-CTB has become an important choice in modern display technology with its excellent display performance and wide applicability, and can effectively meet the high standards of various industries.

Features:

The product features of CH550FF01A-CTB mainly include the following aspects:

HD resolution: The module provides a full HD resolution of 1080*1920, ensuring clear image details and suitable for a variety of application scenarios.

IPS display technology: Adopting IPS (plane switching) technology, it provides wide viewing angle and excellent color performance, making the display effect more vivid and realistic.

Touch function: Equipped with a capacitive touch panel, it supports multi-touch, enhances the user interaction experience, and makes the operation more convenient.

High brightness: The maximum brightness can reach 600 cd/m², ensuring readability under different lighting conditions, suitable for outdoor and strong light environments.

Temperature adaptability: The module has an operating temperature range of -20 to +70°C and a storage temperature range of -30 to +80°C, ensuring stability in various extreme environments.

Compact design: The module size is 77*139*5.39 mm, and the active and visible areas are both 68.04*120.96 mm, which is easy to integrate into various devices.

Customization options: Supports a variety of customization services, including FPC design, backlight brightness adjustment, and personalized design of touch panels to meet customers' specific needs.

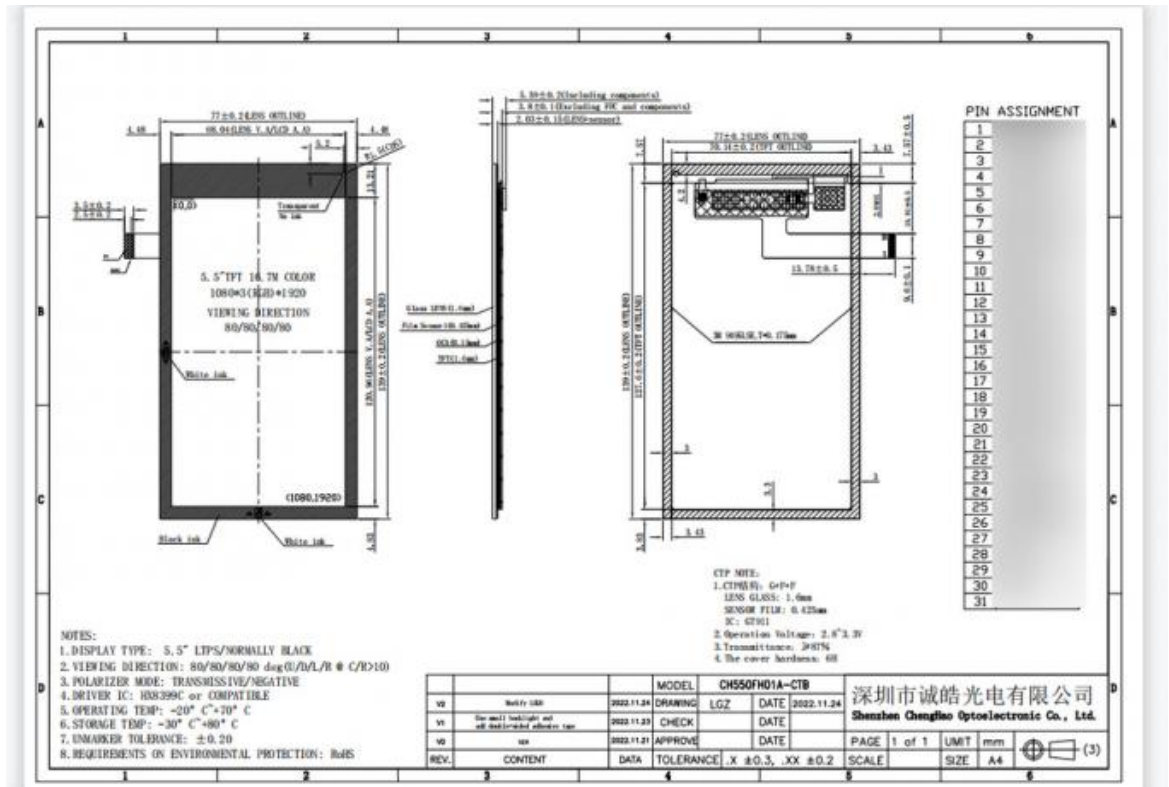
Wide range of application areas: This module is suitable for industrial control, medical equipment, smart home and other fields to meet the diverse needs of modern display technology.

Through these features, CH550FF01A-CTB demonstrates its importance and wide application potential in modern display technology.

Technical Parameters:

tft lcd touch screen	tft screen display
Touch Panel Interface	I2C
Transmittance	≥87%

Storage Temperature	-30 ~ +80℃
Display Mode	IPS / Transmissive / Normally Black
Operating Temperature	-20 ~ +70℃
Lcd Interface	MIPI
Resolution	1080*1920 Dots
Viewing Direction	80/80/80/80
Touch Panel Type	Capacitive
Luminance	600 Cd/m2



Applications:

CH550FF01A-CTB is a high-performance 5.5-inch full HD touch display module, which is widely used in many fields due to its excellent technical features. The following are the main application areas of this product:

Industrial control: In industrial automation and control systems, CH550FF01A-CTB can be used as a human-machine interface (HMI). Through its high-definition display and touch function, operators can easily monitor and control equipment and improve work efficiency.

Medical equipment: This module also has important applications in medical equipment, such as portable diagnostic instruments and monitoring equipment. Its high resolution and good readability enable medical staff to clearly view patient data and images to ensure timely response.

Smart home: In smart home systems, CH550FF01A-CTB can be used as a control panel. Users can easily manage various devices in the home, such as lighting, temperature and security systems, through the touch screen, improving the convenience and comfort of living.

In-vehicle applications: This module is also suitable for in-vehicle devices, such as navigation systems and entertainment information displays. Its high brightness and wide viewing angle characteristics ensure that information can be clearly displayed under different lighting conditions, improving driving safety.

Instruments: Among various instruments, CH550FF01A-CTB can be used as a data display screen, which can display measurement data and status information in real time, facilitating users to monitor and analyze.

IoT devices: With the development of IoT technology, CH550FF01A-CTB is also widely used in smart devices as an interface for information interaction, supporting real-time communication between users and devices.

Through these application areas, CH550FF01A-CTB demonstrates its importance in modern technology and can meet the diverse needs of different industries.

FAQ:

Q: What is the brand name of the small LCD touch screen?

A: The brand name of the small LCD touch screen is Chenghao Optoelectronic.

Q: What is the model number of the small LCD touch screen?

A: The model number of the small LCD touch screen is CH550EH01A-CTB.

Q: What is the place of origin of the small LCD touch screen?

A: The place of origin of the small LCD touch screen is China Shenzhen.

Q: What certifications does the small LCD touch screen have?

A: The small LCD touch screen has RoHS, CE, and FCC certifications.

Q: What is the minimum order quantity of the small LCD touch screen?

A: The minimum order quantity of the small LCD touch screen is 100 pcs.

Q: What is the packaging detail of the small LCD touch screen?

A: All the products are packed in the right way to keep them safe. For small sizes of products, we use tray + carton, and for bigger sizes, we use foam slot + carton. We also design packages according to customers' requirements.

Q: What is the delivery time of the small LCD touch screen?

A: The delivery time of the small LCD touch screen is 3~7 days.

Q: What are the payment terms for the small LCD touch screen?

A: The payment terms for the small LCD touch screen are TT.

Q: What is the supply ability of the small LCD touch screen?

A: The supply ability of the small LCD touch screen is 300K pcs/month.



Shenzhen ChengHao Optoelectronic Co., Ltd.



+86 755-27806536



add@chenghaolcm.com



chenghaolcd.com

7th floor, building C5, Hengfeng Industrial City, Hangcheng street, Bao'an District, Shenzhen