



5.5 Inch Small LCD Touch Screen 1080*1920 Pixels 31 Pins MIPI Interface

Our Product Introduction

for more products please visit us on chenghaolcd.com

Basic Information

- Place of Origin: China Shenzhen
- Brand Name: Chenghao Optoelectronic
- Certification: RoHS CE FCC
- Model Number: CH550FH01A-CTB
- Minimum Order Quantity: 100 pcs
- Packaging Details: All the products are packed in right way to keep it safe. For small sizes of products we use tray + carton, For bigger sizes we use foam slot + carton. we also design packages according to customers' requirements
- Delivery Time: 3~7 Days
- Payment Terms: TT
- Supply Ability: 300K pcs/month



Product Specification

- Product Name: 5.5 Inch Small LCD Touch Screen
- Touch Panel Thickness: 1.6 Mm
- Operating Temperature: -20 ~ +70°C
- Lcd Interface: MIPI
- Storage Temperature: -30 ~ +80°C
- Touch Panel Type: Capacitive
- Display Mode: IPS / Transmissive / Normally Black
- Touch Panel Interface: I2C
- Transmittance: ≥87%
- Highlight: 1080*1920 Pixels Small LCD Touch Screen,
5.5 Inch Small LCD Touch Screen,
31 Pins Small LCD Touch Screen



More Images





Product Description

Product Description:

CH550FF01A-CTB is a high-performance 5.5-inch full HD touch display module with a resolution of 1080*1920 pixels. It uses IPS technology to ensure excellent viewing angle and color performance. The module has a size of 77*139*5.39 mm, and the active area and visible area are both 68.04*120.96 mm. The compact design is suitable for integrated use in a variety of devices.

The display module has high brightness and high contrast, and can provide a clear visual experience under different lighting conditions. It is particularly suitable for application scenarios that require high-quality display. CH550FF01A-CTB also supports capacitive touch function, which enhances the user's interactive experience.

In addition, the module has an operating temperature range of -20 to +70°C and a storage temperature range of -30 to +80°C, ensuring its stability and reliability in various environments. This product is widely used in industrial control, medical equipment, smart home and other fields, meeting the diverse needs of modern display technology.

Through flexible customization options, the CH550FF01A-CTB can be adjusted to the specific needs of customers, further enhancing its market competitiveness and application scope.

[View source](#)

Features:

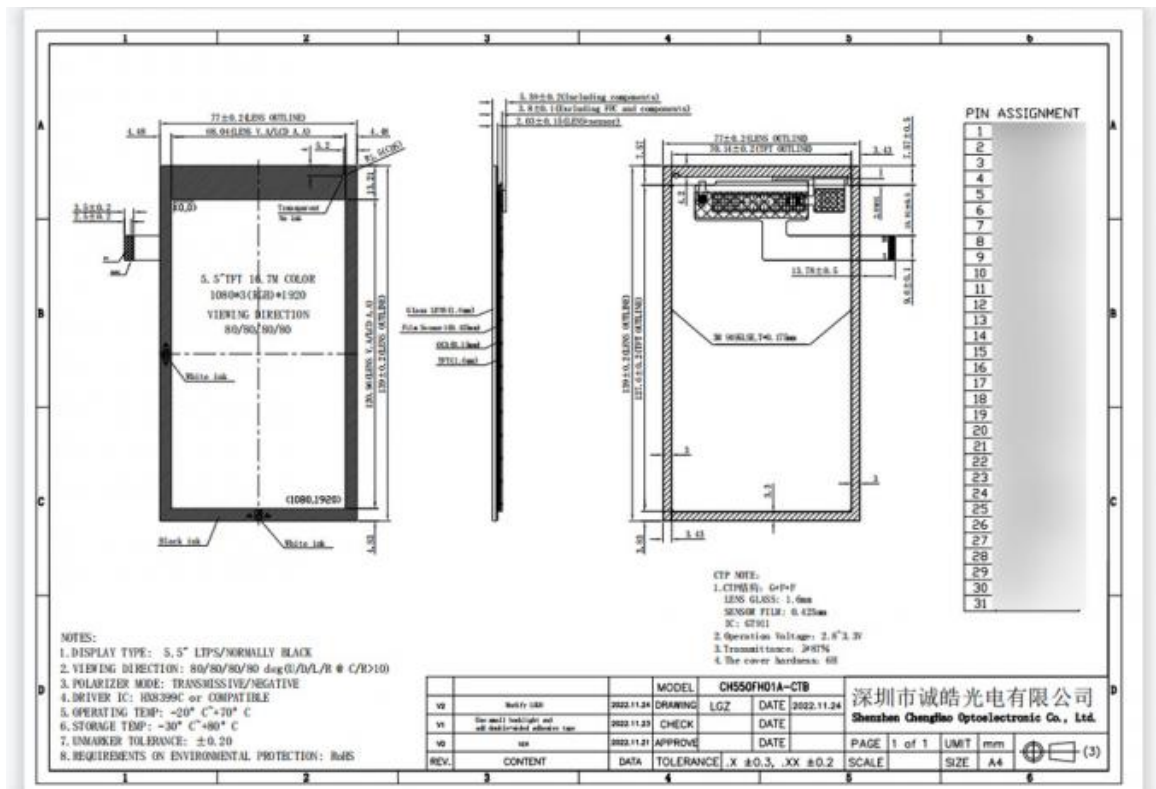
The product features of CH550FF01A-CTB mainly include the following points:

- * Display technology: Adopting IPS (in-plane switching) technology, it provides full-viewing display effects and ensures accurate and vivid colors.
- * Resolution: With a full HD resolution of 1080*1920, it can clearly display details and is suitable for a variety of application scenarios.
- * Touch function: Equipped with a capacitive touch panel, it supports multi-touch to enhance the user interaction experience.
- ||* Brightness: The maximum brightness can reach 600 cd/m², ensuring good readability under different lighting conditions.
- * Temperature adaptability: The operating temperature range is -20 to +70°C, and the storage temperature range is -30 to +80°C, which is suitable for applications in various environments.
- * Dimensions: The module size is 77*139*5.39 mm, and the active area and visible area are both 68.04*120.96 mm. The design is compact and easy to integrate.
- * Customization options: Support a variety of customization services, including FPC design, backlight brightness adjustment and touch panel design to meet the specific needs of customers.
- * Application fields: Widely used in industrial control, medical equipment, smart home and other fields, adapting to the diverse needs of modern display technology.

Through the above features, CH550FF01A-CTB demonstrates its importance and wide application potential in modern display technology.

Technical Parameters:

tft lcd touch screen	Small LCD Touch Screen
Lcd Interface	MIPI
Touch Panel Interface	I2C
Touch Panel Type	Capacitive
Display Mode	IPS / Transmissive / Normally Black
Resolution	1080*1920 Dots
Viewing Direction	80/80/80/80
Transmittance	≥87%
Touch panel thickness	1.6 Mm
Operating Temperature	-20 ~ +70°C
Storage Temperature	-30 ~ +80°C
lcd touch screen display	Small LCD Touch Screen
display tft	Small LCD Touch Screen



Applications:

The CH550FH01A-CTB is a versatile product that can be used in various occasions and scenarios, thanks to its compact size and user-friendly interface. Here are some examples:

Industrial Control Systems: The CH550FH01A-CTB can be used as a control panel display for industrial machines and equipment. Its durable design, operating temperature range of -20 ~ +70°C and storage temperature range of -30 ~ +80°C make it suitable for use in harsh environments.

Medical Equipment: The CH550FH01A-CTB can be used as a user interface for medical equipment such as patient monitoring systems, ECG machines, and ultrasound equipment. Its touch panel interface (I2C) allows for easy navigation and operation.

Retail and Hospitality: The CH550FH01A-CTB can be used in retail and hospitality settings as a point-of-sale display or digital signage. Its high resolution and clear display make it ideal for displaying product information, menus, and advertisements.

Consumer Electronics: The CH550FH01A-CTB can be used in various consumer electronics products that require a TFT display LCD, such as smartphones and tablets. Its MIPI interface allows for fast and reliable data transfer.

Rest assured that the CH550FH01A-CTB is a high-quality product that meets international standards. It is RoHS, CE, and FCC certified, ensuring that it is safe and reliable for use in various applications.

FAQ:

Here are the frequently asked questions and answers for Chenghao Optoelectronic's Small LCD Touch Screen:

Q: What is the model number of this product?

A: The model number for this product is CH550FH01A-CTB.

Q: Where is this product made?

A: This product is made in China Shenzhen.

Q: Is this product certified?

A: Yes, this product is certified with RoHS, CE, and FCC.

Q: What is the minimum order quantity for this product?

A: The minimum order quantity for this product is 100 pcs.

Q: What are the packaging details for this product?

A: All the products are packed in the right way to keep them safe. For small sizes of products, we use tray + carton. For bigger sizes, we use foam slot + carton. We also design packages according to customers' requirements.

Q: What is the delivery time for this product?

A: The delivery time for this product is 3~7 days.

Q: What are the payment terms for this product?

A: The payment terms for this product are TT.

Q: What is the supply ability for this product?

A: The supply ability for this product is 300K pcs/month.



Shenzhen ChengHao Optoelectronic Co., Ltd.



+86 755-27806536



add@chenghaolcm.com



chenghaolcd.com

7th floor, building C5, Hengfeng Industrial City, Hangcheng street, Bao'an District, Shenzhen

