



## High Brightness Lcd Display Module 7inch 1024 600 Color Tft With Capacitive Touch

### Our Product Introduction

for more products please visit us on [chenghaolcd.com](http://chenghaolcd.com)

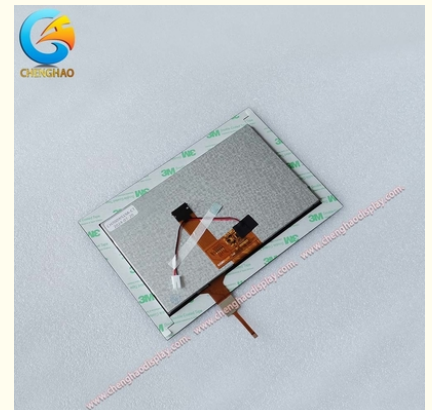
#### Basic Information

- Place of Origin: China Shenzhen
- Brand Name: Chenghao Optoelectronic
- Certification: CE RoHS FCC
- Model Number: CH700WS19A-CT
- Minimum Order Quantity: No Moq
- Packaging Details: All the products are packed in right way to keep it safe. For small sizes of products we use tray + carton, For bigger sizes we use foam slot + carton. we also design packages according to customers' requirements
- Delivery Time: 3~7 Days
- Payment Terms: TT or Others
- Supply Ability: 20000000 pcs/month



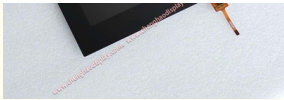
#### Product Specification

- Product Name: 7 Inch High Brightness Lcd Display Module
- Resolution: 1024x600 Dots
- Contrast: 800:1
- Touch Panel Cover Hardness: 6H
- Operating Temperature: -20 ~ +70°C
- Touch Panel Type: IIC
- Backlight Type: 27 White LED
- Active Area Size: 154.21x85.82 Mm
- Module Size: 192.8x132.4x5.13 Mm
- Highlight: 1024 600 Lcd Display Module,  
7inch Lcd Display Module,  
High Brightness Lcd Display Module



#### More Images



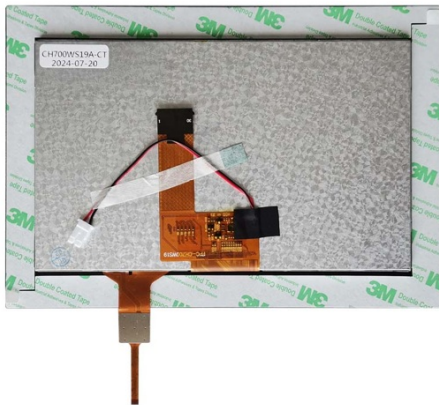
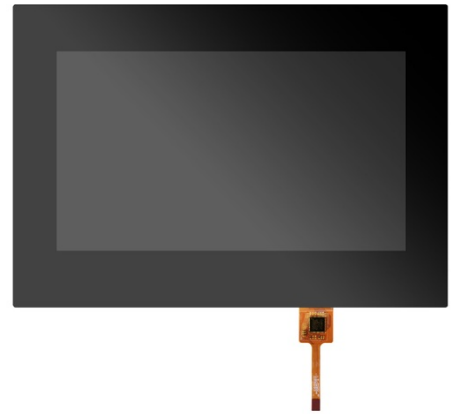


## Product Description

### Product Description:

CH700WS19A-CT is a high-performance 7-inch TFT LCD display module with a resolution of 1024x600. It adopts IPS technology to ensure wide viewing angle and excellent color performance. The module has an overall size of 192.8x132.4x5.13 mm and an active area of 154.21x85.82 mm, which is suitable for integrated use in a variety of devices. Its brightness can reach 500 cd/m<sup>2</sup>, with good sunlight readability, especially suitable for working in strong light environments.

CH700WS19A-CT supports a variety of customization options, including FPC design, backlight brightness adjustment and touch panel type selection, which can meet the specific needs of different customers.



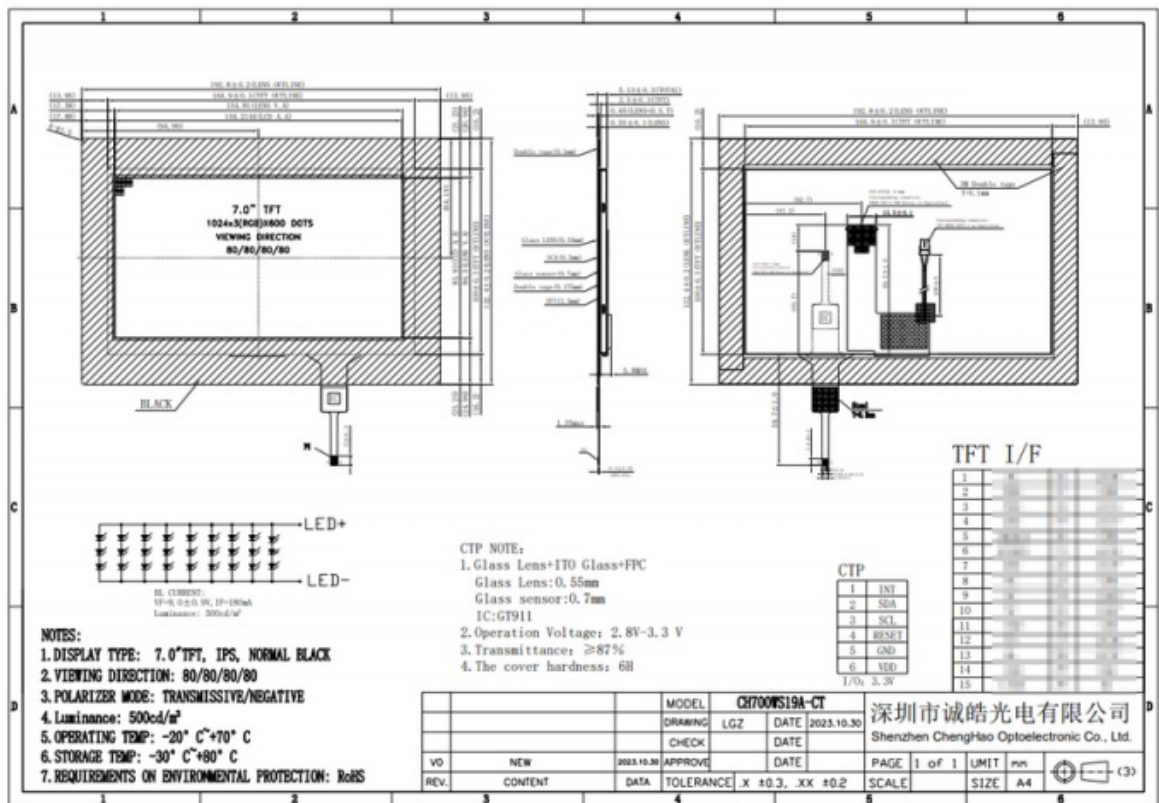
Customers can customize the interface type according to project requirements to ensure compatibility with the control system. In addition, the module has an operating temperature range of -20 to +70°C and a storage temperature of -30 to +80°C, making it suitable for applications in many fields such as industrial control, smart home, and medical equipment. With its excellent performance and flexible customization capabilities, CH700WS19A-CT has become an indispensable component in modern display technology and is widely used in various smart devices and industrial applications, providing users with high-quality visual experience.

### Features:

The product features of CH700WS19A-CT mainly include the following points:

- \* Display technology: Adopting IPS (In-Plane Switching) technology, it provides wide viewing angle and excellent color performance, ensuring that users can get a clear visual experience at different angles.
- \* Resolution: With a high-definition resolution of 1024x600, it can clearly display details and is suitable for a variety of application scenarios.
- \* Brightness: The maximum brightness can reach 1000 cd/m<sup>2</sup>, with good sunlight readability, suitable for use in strong light environments.
- \* Touch function: Equipped with a capacitive touch panel, it supports multi-touch, which improves the convenience of human-computer interaction.
- \* Temperature adaptability: The operating temperature range is -20 to +70°C, and the storage temperature range is -30 to +80°C, which is suitable for various industrial and outdoor applications.
- \* Customization options: Support a variety of customization services, including FPC design, backlight brightness adjustment, LCD interface definition and touch panel design to meet customers' specific needs.
- \* Dimensions: The module dimensions are 192.8x132.4x5.13 mm, and the active area is 154.21x85.82 mm, which is suitable for integrated use in a variety of devices.

Through these features, CH700WS19A-CT demonstrates its importance and wide application potential in modern display technology.



Technical Parameters:

TFT LCD Capacitive Touch Display	
Thin Film Transistor Capacitive Touchscreen	
tft lcd module	
Display Mode	IPS / Transmissive / Normally Black
Touch panel operating voltage	2.8~3.3 V
Active Area Size	154.21x85.82 Mm
Storage Temperature	-30 ~ +80℃
Touch panel cover hardness	6H
Module Size	192.8x132.4x5.13 Mm
Backlight Type	27 White LED
Touch panel Transmittance	≥87%
Contrast	800:1
Resolution	1024x600 Dots

Applications:

CH700WS19A-CT is a high-performance LCD display module. With its excellent technical features, it is widely used in many fields. The following are the main application areas of this product:

- \* Industrial control: CH700WS19A-CT can operate stably in a wide temperature environment of -20 to +70℃, and is suitable for monitoring and operation interfaces of industrial automation equipment. Its high brightness and clear display effect enable operators to accurately read information under various lighting conditions, thereby improving work efficiency.
- \* Smart home: This module can be used for smart home devices, such as smart control panels, home appliance displays, etc., providing an intuitive user interface and enhancing the user's interactive experience. The capacitive touch function makes operation more convenient.
- \* Medical equipment: In the field of medical equipment, CH700WS19A-CT can be applied to the display interface of heart rate monitors and medical instruments, providing real-time data and graphic display, helping medical staff make quick decisions and ensure the safety of patients.
- \* Instrumentation: This module is suitable for the display of various instruments, such as detectors, monitors, etc., and can clearly display measurement data and status information to meet the needs of professional fields.
- \* In-vehicle applications: CH700WS19A-CT is widely used in in-vehicle devices, such as navigation display, in-vehicle central control display, etc., to meet the needs of information display during driving. Its high brightness and good viewing angle enable drivers to clearly view information under different lighting conditions.
- \* Artificial intelligence and IoT devices: The module is also suitable for artificial intelligence devices and IoT applications, such as smart robots and various smart terminals, providing intuitive user interfaces and interactive functions to support the development of modern technology.

\* Customized products: Since CH700WS19A-CT supports a variety of customization options, customers can adjust the design and functions of the module according to specific needs to make it suitable for application requirements of specific industries. In summary, CH700WS19A-CT has become an important choice in modern display technology with its excellent display performance, flexible customization capabilities and wide application fields, meeting the needs of various smart devices and industrial applications.

## FAQ:

Q: What is the brand name of the TFT LCD Capacitive Touchscreen?

A: The brand name is Chenghao Optoelectronic.

Q: Where is the TFT LCD Capacitive Touchscreen manufactured?

A: It is manufactured in China, specifically in Shenzhen.

Q: What certifications does the TFT LCD Capacitive Touchscreen have?

A: It is certified with CE, RoHS, and FCC.

Q: What is the minimum order quantity for the TFT LCD Capacitive Touchscreen?

A: There is no minimum order quantity.

Q: What are the packaging details for the TFT LCD Capacitive Touchscreen?

A: All products are packed in the right way to keep them safe. For small sizes of products, we use tray + carton, for bigger sizes, we use foam slot + carton. We also design packages according to customers' requirements.

Q: What is the delivery time for the TFT LCD Capacitive Touchscreen?

A: The delivery time is 3~7 days.

Q: What are the payment terms for the TFT LCD Capacitive Touchscreen?

A: The payment terms can be TT or other options.

Q: What is the supply ability for the TFT LCD Capacitive Touchscreen?

A: The supply ability is 20000000 pcs/month.



**Shenzhen ChengHao Optoelectronic Co., Ltd.**



+86 755-27806536



add@chenghaolcm.com



chenghaolcd.com

7th floor, building C5, Hengfeng Industrial City, Hangcheng street, Bao'an District, Shenzhen