



## 7 Inch Touch Screen Display 1024\*600 Pixels IPS Full Viewing Direction

### Our Product Introduction

for more products please visit us on [chenghaolcd.com](http://chenghaolcd.com)

#### Basic Information

- Place of Origin: China Shenzhen
- Brand Name: Chenghao Optoelectronic
- Certification: CE RoHS FCC
- Model Number: CH700WS19A-CT
- Minimum Order Quantity: No Moq
- Packaging Details: All the products are packed in right way to keep it safe. For small sizes of products we use tray + carton, For bigger sizes we use foam slot + carton. we also design packages according to customers' requirements
- Delivery Time: 3~7 Days
- Payment Terms: TT or Others
- Supply Ability: 20000000 pcs/month



#### Product Specification

- Product Name: 7 Inch Display Touch Screen
- Resolution: 1024x600 Dots
- Backlight Brightness: 500 Cd/m2
- Display Mode: IPS / Transmissive / Normally Black
- Active Area Size: 154.21x85.82 Mm
- Backlight Type: 27 White LED
- Operating Temperature: -20 ~ +70°C
- Contrast: 800:1
- Viewing Direction: 80/80/80/80
- Highlight: 1024\*600 Pixels Touch Screen Display, 7 Inch Touch Screen Display, IPS Full Viewing Touch Screen Display



#### More Images





## Product Description

### Product Description:

CH700WS19A-CT is a high-brightness 7-inch TFT LCD display module with a resolution of 1024x600 and IPS technology, ensuring that users can get clear images and rich color performance at different viewing angles. The module has a size of 192.8x132.4x5.13 mm and an active area of 154.21x85.82 mm, which is suitable for integrated use in a variety of devices.

The module has a brightness of up to 1000 cd/m<sup>2</sup> and excellent sunlight readability, which enables it to display content clearly in strong light environments, making it very suitable for outdoor and industrial applications. CH700WS19A-CT is also equipped with a capacitive touch panel that supports multi-touch, which improves the convenience of human-computer interaction.

In addition, the module has an operating temperature range of -20 to +70°C and a storage temperature of -30 to +80°C, ensuring its stability and reliability under various environmental conditions. It is widely used in industrial control, smart home, medical equipment and other fields. CH700WS19A-CT supports a variety of customization options, including FPC design and backlight brightness adjustment, to meet customers' specific needs.

With its excellent performance and flexible application capabilities, CH700WS19A-CT has become an indispensable component in modern display technology, helping the development of various smart devices and industrial applications, and providing users with a high-quality visual experience.

### Features:

Product Name: TFT-LCD Capacitive Touchscreen

Active Area Size: 154.21x85.82 Mm

Touch Panel Thickness: 1.25 Mm

Touch panel cover hardness: 6H

Operating Temperature: -20 ~ +70°C

Color: 16.7M

Features:

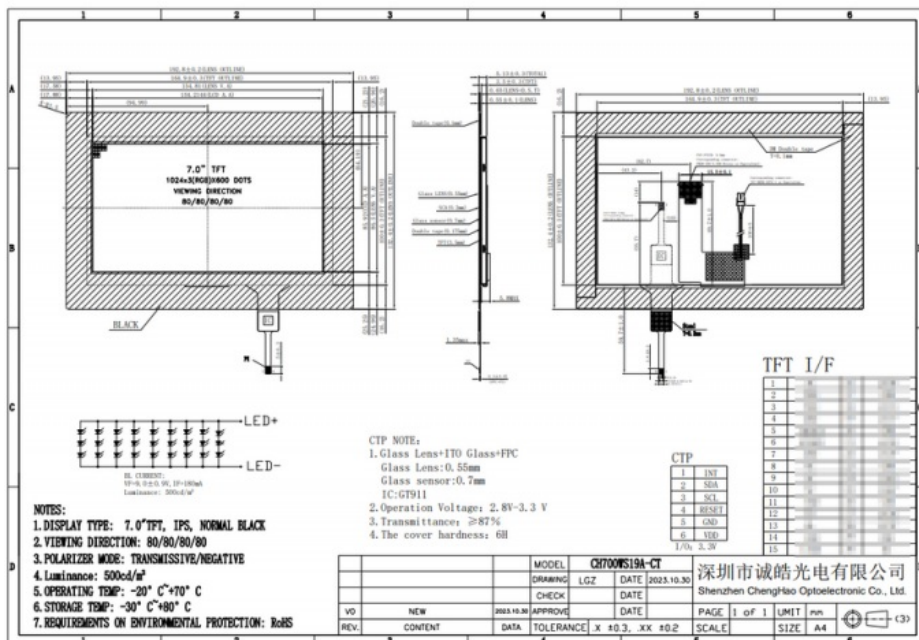
Thin Film Transistor Capacitive Touchscreen

Touch LCD Module

Touch LCD Screen Display

### Technical Parameters:

Product Attribute	Value
Touch Display Module	TFT LCD Capacitive Touchscreen
Contrast	800:1
Operating Temperature	-20 ~ +70°C
Touch Panel Cover Hardness	6H
Touch Panel Thickness	1.25 Mm
Viewing Direction	80/80/80/80
Storage Temperature	-30 ~ +80°C
Display Mode	IPS / Transmissive / Normally Black
Touch Panel Operating Voltage	2.8~3.3 V
Backlight Type	27 White LED
Module Size	192.8x132.4x5.13 Mm
Touch LCD Screen	TFT LCD Capacitive Touchscreen



## Applications:

CH700WS19A-CT is a powerful 7-inch TFT LCD display module, which is widely used in many fields with its excellent display performance and diverse application characteristics. The following are the main application areas of this product:

**Industrial Automation:** In industrial control systems, CH700WS19A-CT can be used as a monitoring and operation interface to provide real-time data and status display. Its high brightness and wide temperature range enable it to operate stably in various industrial environments, ensuring that operators can clearly read information under different lighting conditions.

**Smart Home Devices:** This module is suitable for smart home products such as smart control panels, home appliance displays, etc., and can provide an intuitive user interface to enhance the user's interactive experience. The capacitive touch function makes operation more convenient, in line with the intelligent trend of modern homes.

**Medical Equipment:** In the medical industry, CH700WS19A-CT can be used for the display interface of various medical instruments, such as monitors, diagnostic equipment, etc., providing clear graphics and data display, helping medical staff make quick decisions and ensure the safety and health of patients.

**Instruments:** This module is suitable for the display of various instruments, such as environmental monitoring equipment, detection instruments, etc. It can clearly display measurement data and status information to meet the needs of professional fields.

**Vehicle-mounted systems:** CH700WS19A-CT is widely used in vehicle-mounted equipment, such as navigation systems, in-vehicle entertainment systems, etc., providing an intuitive display interface to ensure that drivers can easily obtain the required information while driving. Its high brightness and good viewing angle enable drivers to clearly view information under different lighting conditions.

**Internet of Things and Smart Devices:** This module is also suitable for IoT devices and smart terminals, such as smart robots, smart home control centers, etc., providing intuitive user interfaces and interactive functions to support the development of modern technology.

**Customized solutions:** Since CH700WS19A-CT supports a variety of customization options, customers can adjust the design and functions of the module according to specific needs, making it suitable for the application needs of specific industries, further expanding its application scope.

In summary, CH700WS19A-CT has become an indispensable and important component in modern display technology with its excellent performance and flexible application capabilities, meeting the needs of various smart devices and industrial applications.

## FAQ:

**Q: What is the brand name of the product?**

A: The brand name of the product is Chenghao Optoelectronic.

**Q: What is the model number of the product?**

A: The model number of the product is CH700WS19A-CT.

**Q: Where is the product manufactured?**

A: The product is manufactured in China, specifically in Shenzhen.

**Q: What certifications does the product have?**

A: The product has CE, RoHS, and FCC certifications.

**Q: What is the minimum order quantity?**

A: There is no minimum order quantity for this product.

**Q: How is the product packaged?**

A: The product is packed in a safe and secure manner. For small sizes of products, we use tray + carton, and for bigger sizes, we use foam slot + carton. We also design packages according to customers' requirements.

**Q: What is the delivery time for this product?**

A: The delivery time for this product is 3~7 days.

**Q: What are the payment terms?**

A: The payment terms are TT or others.

**Q: What is the supply ability for this product?**

A: The supply ability for this product is 20,000,000 pcs/month.



**Shenzhen ChengHao Optoelectronic Co., Ltd.**



+86 755-27806536



add@chenghaolcm.com



chenghaolcd.com

7th floor, building C5, Hengfeng Industrial City, Hangcheng street, Bao'an District, Shenzhen