

6.86 Inch Touch LCD Display Module 1280*480 Long Strip Color Screen For Industrial Equipment

Our Product Introduction

for more products please visit us on chenghaolcd.com

Basic Information

- Place of Origin: China Shenzhen
- Brand Name: Chenghao Optoelectronic
- Certification: CE RoHS FCC
- Model Number: CH686HD02A-CT
- Minimum Order Quantity: No Moq
- Packaging Details: All the products are packed in right way to keep it safe. For small sizes of products we use tray + carton, For bigger sizes we use foam slot + carton. we also design packages according to customers' requirements
- Delivery Time: 3~7 Days
- Payment Terms: TT or Others
- Supply Ability: 20000000 pcs/month



Product Specification

- Product Name: 6.86 Inch Touch Lcd Display Module
- Touch Panel Cover Hardness: 6H
- Storage Temperature: -30 ~ +80°C
- FPC Pin Number: 40pins
- Touch Panel Transmittance: ≥87%
- Touch Panel Operating Voltage: 2.8~3.3 V
- Touch Panel Thickness: 1.1 Mm
- Backlight Type: 12 White LED
- Touch Panel Type: IIC
- Highlight: 1280*480 Lcd Display Module, Industrial Equipment Lcd Display Module,



More Images





Product Description

Product Description:

Chenghao Optoelectronic CH686HD02A-CT Display Module

Chenghao Optoelectronic CH686HD02A-CT is a medium-sized capacitive color touch screen display module. The module is designed to provide an intuitive touch experience, making it suitable for various applications.

Display Size and Resolution

The display module has an appearance size of 181*65.6*6.6mm, and a display area size of 6.86 inches. The module can output color images with 16M colors and 1280*480 resolution, making it ideal for displaying high-quality images.

Display Mode and Viewing Angle

The display uses IPS/Transmissive/Normally Black display mode, which provides an excellent viewing experience while reducing power consumption. The best viewing angle is 85/85/85/85, making it easy to view from different angles.

Backlight Component

The display module uses a backlight component with 12 LED beads embedded as its light source. The backlight component can produce white light with up to 500 cd/m2 luminance. This design enables the display to display clearly under normal intensity sunlight, making it perfect for outdoor use.



Touch Glass Cover

We installed a black touch glass cover with capacitive touch sensing for this display module to meet customers' demand for touch sensing capability. This cover is 1.65 mm thick, with a light transmittance of over 87%. It has an embedded GT911 driver IC using an I2C interface, and can operate normally with an input voltage of 2.8~3.3v.

Temperature Design

This 6.86-inch full-color LCD touchscreen display module adopts a wide temperature design, which can operate stably for a long time in an environment of -20 ~ +70 degrees Celsius. The module can be stored normally in an environment of -30 ~ +80 degrees Celsius when the power is off.

RoHS-compliant and Halogen-free

This touch screen module is RoHS-compliant and halogen-free, making it an eco-friendly and safe choice for various applications.

Features:

The Chenghao Optoelectronic CH686HD02A-CT is a car-grade touch screen display module that boasts a unique long strip appearance along with a host of exceptional features.

One of the most notable features of the Chenghao Optoelectronic CH686HD02A-CT is its high-definition resolution display. This feature allows the display to output color videos or images with high-definition resolution in 16M colors and 1280*480 resolution.

In addition to its high-definition display, the Chenghao Optoelectronic CH686HD02A-CT is also designed to be sunlight readable, with a 500 cd/m2 luminance backlight that provides good sunlight readability in general outdoor environments.

The capacitive touch panel feature of the Chenghao Optoelectronic CH686HD02A-CT is combined with the GT911 driver IC, which makes this display module touch-sensitive and fast. It also supports multi-touch for added convenience and usability.

Thanks to its IPS/Transmissive/normally black display mode, the Chenghao Optoelectronic CH686HD02A-CT boasts a free viewing angle that expands the viewing angle of the display screen to 85/85/85/85. This means that users can get a good viewing experience when watching the screen from different angles.

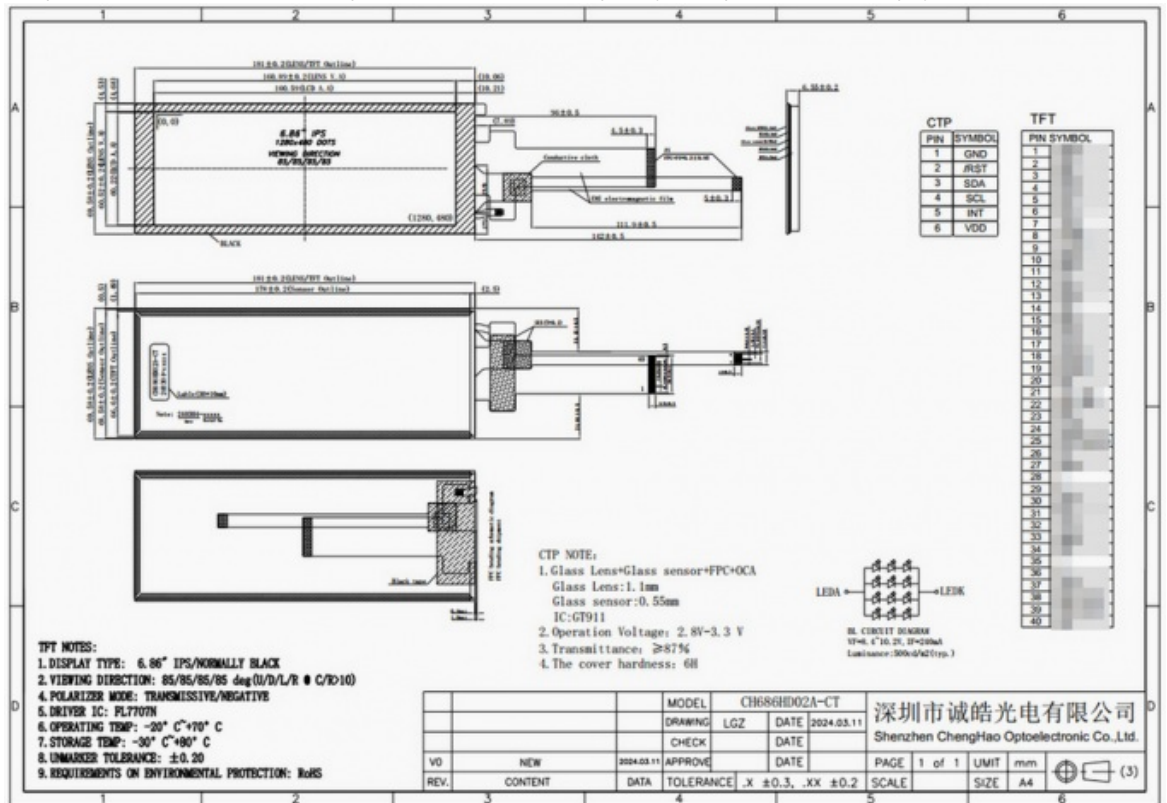
Finally, the Chenghao Optoelectronic CH686HD02A-CT is built to last with a wide temperature resistance design that allows it to operate stably in an environment of -20~+70°C. This design allows the display module to better cope with various working conditions with rapid temperature changes while also greatly improving the durability of the display module.

Technical Parameters:

Product Attribute	Value
-------------------	-------

Touch panel operating voltage	2.8~3.3 V
Touch panel cover hardness	6H
Viewing Direction	85/85/85/85
FPC Pin Number	40pins
Backlight Type	12 White LED
Backlight Brightness	500 Cd/m2
Contrast	800:1
Active Area Size	160.6*60.2 Mm
Touch panel Transmittance	≥87%
Touch Panel Type	IIC

This product is a Thin-Film-Transistor Capacitive Touch Panel, TFT Liquid Crystal Capacitance Touch Display.



Applications:

The Chenghao Optoelectronic CH686HD02A-CT is a medium-sized LCD touch screen display module that stands out with its unique long strip design. Unlike traditional rectangular screens, this design allows the module to adapt to more special installation environments and application scenarios.

One advantage of long strip displays is their space-saving feature, which makes them perfect for commercial places. They can be installed along the door frames and counter edges of shops, forming a unique visual display effect while taking up minimal space.

Long strip displays are also known for their high-definition visual effects and long lifespan, making them ideal for various fields like medical and industrial control. In medical equipment, for instance, long strip displays can display patients' physiological data and diagnostic results in real time with their high definition and stability.

Long strip displays are also used in the field of industrial control, where they display various parameters and data. Their high definition and long lifespan make them highly suitable for such applications. In automobile manufacturing, long strip displays can be integrated into different car components to maximize the car's narrow interior space. For example, a long strip display can be placed on a car's odometer or center console to display corresponding vehicle information.

FAQ:

Q: What is the brand name of this product?

A: The brand name of this product is Chenghao Optoelectronic.

Q: What is the model number of this product?

A: The model number of this product is CH686HD02A-CT.

Q: Where is this product manufactured?

A: This product is manufactured in China, specifically in Shenzhen.

Q: What certifications does this product have?

A: This product has CE, RoHS, and FCC certifications.

Q: What is the minimum order quantity for this product?

A: There is no minimum order quantity for this product.

Q: How is this product packaged for shipping?

A: All the products are packed in the right way to keep them safe. For small sizes of products, we use tray + carton, for bigger sizes we

use foam slot + carton. We also design packages according to customers' requirements.

Q: How long does it take to receive this product after ordering?

A: The delivery time is 3~7 days.

Q: What payment methods are accepted for this product?

A: We accept TT or other payment terms.

Q: What is the supply ability of this product?

A: The supply ability of this product is 20,000,000 pcs/month.



Shenzhen ChengHao Optoelectronic Co., Ltd.



+86 755-27806536



add@chenghaolcm.com



chenghaolcd.com

7th floor, building C5, Hengfeng Industrial City, Hangcheng street, Bao'an District, Shenzhen