



6.86 Inch TFT LCD Capacitive Touchscreen 16M Color 1280*480 Pixels Custom TFT LCD

Our Product Introduction

for more products please visit us on chenghaolcd.com

Basic Information

- Place of Origin: China Shenzhen
- Brand Name: Chenghao Optoelectronic
- Certification: CE RoHS FCC
- Model Number: CH686HD02A-CT
- Minimum Order Quantity: No Moq
- Packaging Details: All the products are packed in right way to keep it safe. For small sizes of products we use tray + carton, For bigger sizes we use foam slot + carton. we also design packages according to customers' requirements
- Delivery Time: 3~7 Days
- Payment Terms: TT or Others
- Supply Ability: 20000000 pcs/month



Product Specification

- Product Name: 6.86 Inch Capacitive Touchscreen
- Operating Temperature: -20 ~ +70°C
- Resolution: 1280x480 Dots
- Backlight Brightness: 500 Cd/m2
- Active Area Size: 160.6*60.2 Mm
- Viewing Direction: 85/85/85/85
- Storage Temperature: -30 ~ +80°C
- Touch Panel Type: IIC
- Backlight Type: 12 White LED
- Highlight: 16M Color Custom TFT LCD,
1280*480 Pixels Custom TFT LCD,
6.86 Inch TFT LCD Capacitive Touchscreen



More Images



Product Description

Product Description:

Chenghao Optoelectronics CH686HD02A-CT is a medium-sized capacitive color touch screen display module with a wide range of applications. The display module has an external size of 181*65.6*6.6mm, a display area size of 6.86 inches, and can output 16M colors and a color image with a resolution of 1280*480. The IPS/Transmissive/Normally Black display mode ensures the best viewing angle of 85/85/85/85, and the display uses the MIPI interface to communicate with external devices.

To ensure high-quality display performance, Chenghao Optoelectronics CH686HD02A-CT touch screen module also has a backlight component with 12 LED lamp beads embedded as the light source. The backlight component can produce white light with a brightness of up to 500 cd/m², allowing the display to display clearly even in normal-intensity sunlight.

At Chenghao Optoelectronics, we are well aware of the importance of touch sensing in display modules. To this end, we have installed a black touch glass cover with capacitive touch sensing for this display module. The cover is 1.65mm thick, with a light transmittance of over 87%. It uses an I2C interface, has an embedded GT911 driver IC, and can work normally with an input voltage of 2.8~3.3v.

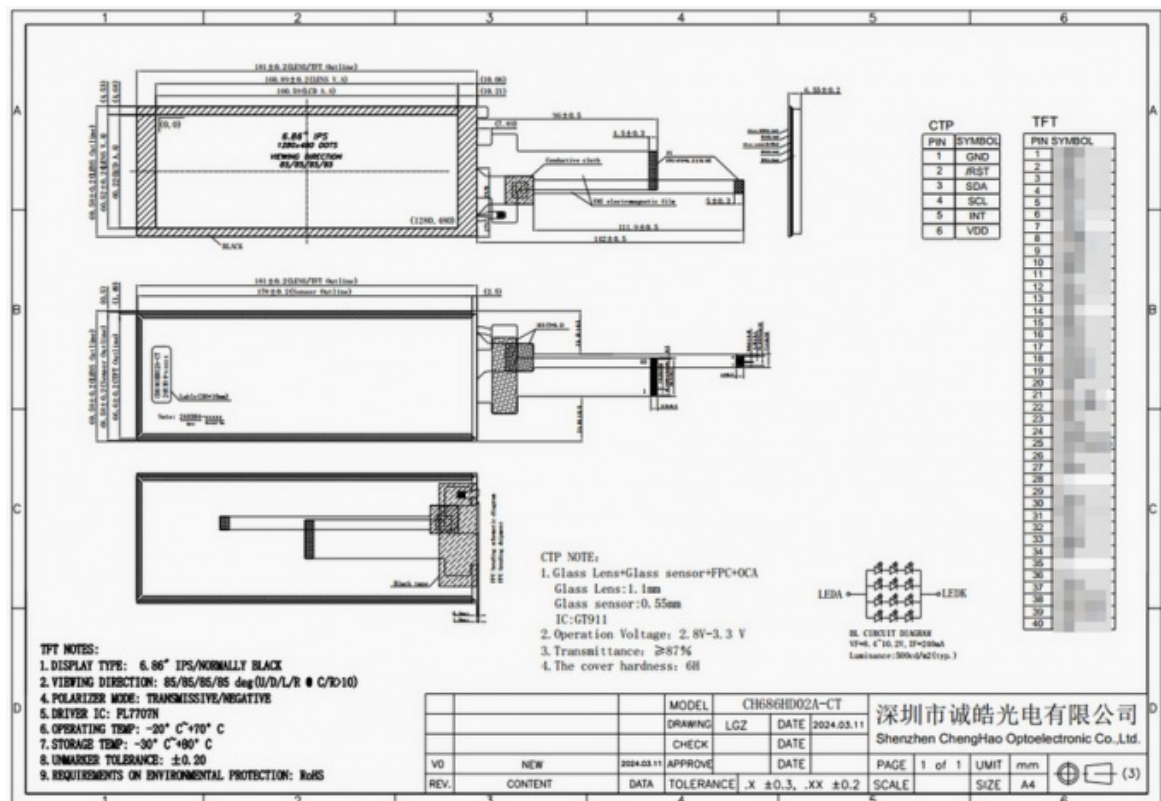
This 6.86-inch full-color LCD touch screen display module also adopts a wide temperature range design, which is very suitable for use in different environments. The module can operate stably for a long time in an environment of -20~+70 degrees Celsius, and can be stored normally in an environment of -30~+80 degrees Celsius when the power is off.

Finally, this touch screen module complies with RoHS standards, does not contain halogen, is environmentally friendly and safe, and can be used in all walks of life.

Features:

Chenghao Optoelectronic CH686HD02A-CT is an exceptional car-grade touch screen display module that comes with a unique long strip design and comprises numerous incredible features.

- * The impressive display performance of 16M colors and 1280*480 resolution makes it possible for this display to output color videos or images with high-definition resolution.
- * The design of 500 cd/m² luminance backlight ensures that the display has good sunlight readability in general outdoor environments.
- * The capacitive touch panel and GT911 driver IC combination make this display module touch-sensitive and fast while also supporting multi-touch.
- * The use of IPS/Transmissive/normally black display mode broadens the viewing angle of the display screen to 85/85/85/85, ensuring that users get an excellent viewing experience from different viewing angles.
- * The display module is designed to withstand a wide temperature range and can operate stably in an environment of -20~+70°C. This design enables the display module to better cope with various working environments with rapid temperature changes.



Technical Parameters:

Lcd Interface	MIPI
Display Mode	IPS / Transmissive / Normally Black
Backlight Type	12 White LED
Operating Temperature	-20 ~ +70°C
Backlight Brightness	500 Cd/m2
Touch Panel Thickness	1.1 Mm
Active Area Size	160.6*60.2 Mm
Viewing Direction	85/85/85/85
Touch Panel Type	IIC
Module Size	181*69.5*6.5 Mm

This touch TFT display is a TFT LCD color monitor with a capacitive touchscreen interface.

Applications:

Chenghao Optoelectronic CH686HD02A-CT is a medium-sized LCD touch screen display module that has a unique long strip design, which breaks the limitations of traditional rectangular screens.

The long strip design of this touch screen module enables it to adapt to more special installation environments and application scenarios. For instance, in commercial places, long strip displays can be installed along the door frames and counter edges of shops. This not only saves space but also creates a unique visual display effect that is integrated into the environment.

Moreover, long strip displays have significant advantages in visual effects due to their high definition and long life. As a result, they are widely used in medical, industrial control, and other fields. In medical equipment, long strip displays can display patients' physiological data and diagnostic results in real-time, and their high definition and stability are very suitable for such applications.

In the industrial control field, long strip displays are used to display various parameters and data, and their high definition and long life are also very suitable for this purpose.

Long strip displays also have unique benefits in the automotive industry. They can be better integrated into various components of the car, allowing the narrow interior space of the car to be fully utilized. For example, a long strip display can be placed on a car's odometer or center console to display corresponding vehicle information.

FAQ:

Here are some frequently asked questions about the Chenghao Optoelectronic CH686HD02A-CT TFT LCD Capacitive Touchscreen: - - -

Q: What is the brand name of this product?

A: The brand name of this product is Chenghao Optoelectronic.

Q: What is the model number of this product?

A: The model number of this product is CH686HD02A-CT.

Q: Where is this product made?

A: This product is made in China, specifically in Shenzhen.

Q: What certifications does this product have?

A: This product is certified with CE, RoHS, and FCC.

Q: What is the minimum order quantity for this product?

A: There is no minimum order quantity for this product.

Q: How is this product packaged?

A: All products are packed in the right way to keep them safe. For small sizes of products, we use tray + carton. For bigger sizes, we use foam slot + carton. We also design packages according to customers' requirements.

Q: What is the delivery time for this product?

A: The delivery time for this product is 3-7 days.

Q: What are the payment terms for this product?

A: The payment terms for this product are TT or other terms as agreed upon.

Q: What is the supply ability for this product?

A: The supply ability for this product is 20,000,000 pcs/month.



Shenzhen ChengHao Optoelectronic Co., Ltd.



+86 755-27806536



add@chenghaolcm.com



chenghaolcd.com

7th floor, building C5, Hengfeng Industrial City, Hangcheng street, Bao'an District, Shenzhen