



240 320 Pixels TFT LCD Capacitive Touchscreen 2.4inch Small IPS Display Module For Smart Home

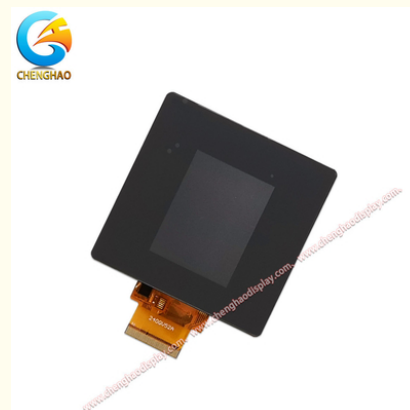
Basic Information

- Place of Origin: China Shenzhen
- Brand Name: Chenghao Optoelectronic
- Certification: RoHS CE FCC
- Model Number: CH240QV52A-CTD
- Minimum Order Quantity: 100 pcs
- Packaging Details: All the products are packed in right way to keep it safe. For small sizes of products we use tray + carton, For bigger sizes we use foam slot + carton. we also design packages according to customers' requirements
- Delivery Time: 3~7 Days
- Payment Terms: TT
- Supply Ability: 300K pcs/month



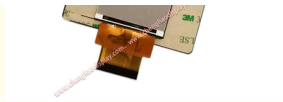
Product Specification

- Product Name: 2.4 Capacitive Touchscreen
- Luminance: 280 Cd/m²
- Display Mode: IPS / Transmissive / Normally Black
- Viewing Direction: 80/80/80/80
- Resolution: 240*320 Dots
- Touch Type: Capacitive
- Operating Temperature: -20 ~ +70°C
- Storage Temperature: -30 ~ +80°C
- Lcd Interface: SPI + RGB + MCU
- Highlight: 2.4inch TFT LCD Capacitive Touchscreen, IPS TFT LCD Capacitive Touchscreen, Smart Home Small IPS Display Module



More Images





Product Description

Product Description:

CH240QV52A-CTD is a small LCD touch screen designed and developed by Chenghao Optoelectronic for 86 boxes.

The touch screen has a 2.4-inch active area and can display 240*320 pixel color images. The display uses SPI, MCU, RGB and other interfaces to communicate with external devices and supports 80/80/80/80 free viewing angles. This LCD touch screen is equipped with a 1.1 mm thick capacitive touch glass cover, uses the IIC interface to communicate with external devices, and supports screen touch sensing. In addition, the display is designed to have a service life of up to 30,000 hours, can operate stably in an environment of -20 ~ +70°C, is RoHS-compliant and halogen-free.



Features:

CH240QV52A-CTD

CH240QV52A-CTD is a small-size LCD touch screen module tailored for home appliances. This module has many features:

Customized appearance - square touch glass cover

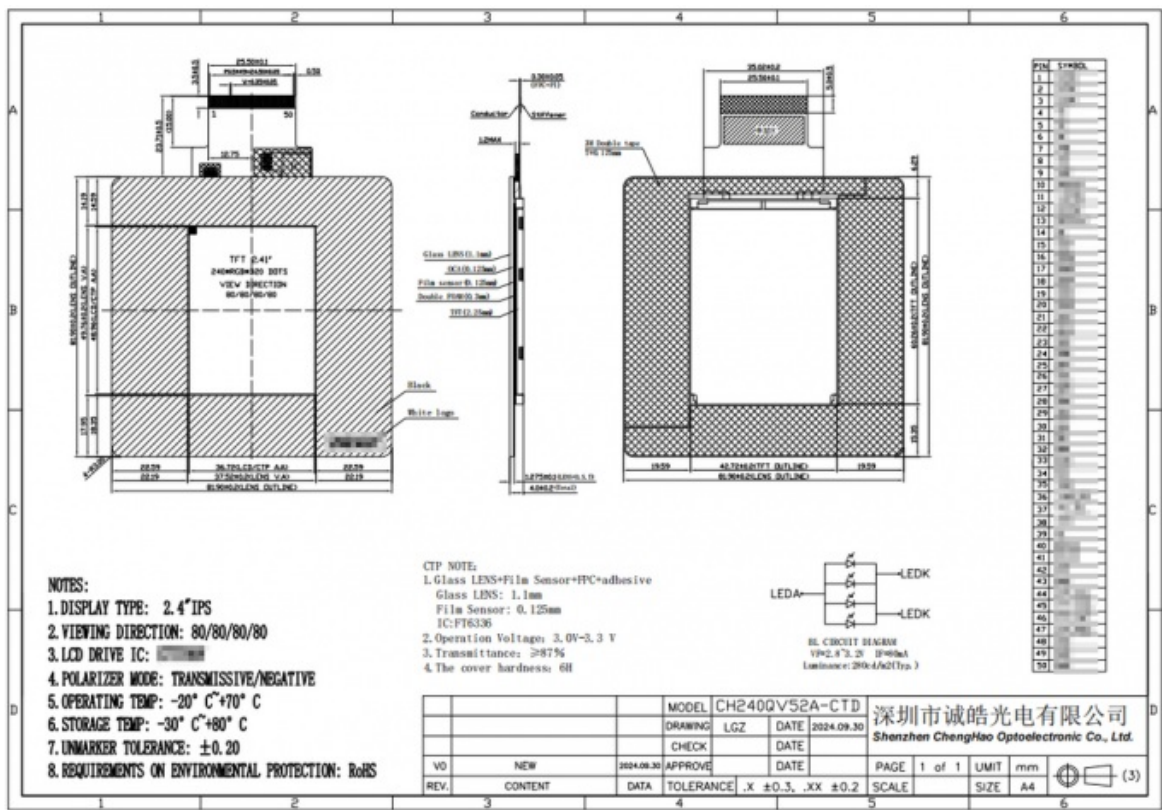
Chenghao Optoelectronic designed a black glass cover with a thickness of 1.1 mm based on the equipment parameters provided by the customer. The CH240QV52A-CTD with this glass cover can fit seamlessly and perfectly on the customer's 86-box device.

Support wide temperature environment

This LCD touch screen module adopts a wide temperature design and can operate stably in a wide temperature environment of -20°C ~ +70°C, and can adapt to many application environments with a large temperature difference between day and night.

Support screen touch sensing

In order to meet the customer's needs for human-computer interaction of the device, we installed a capacitive touch sensing panel for this display module. The touch panel can communicate and interconnect with the customer's 86-box device through the I2C interface.



Technical Parameters:

Display TFT	LCD Touch Screen Display
Touch Type	Capacitive
Resolution	240*320 Dots
LCD Interface	SPI + RGB + MCU
Operating Temperature	-20 ~ +70℃
Storage Temperature	-30 ~ +80℃
Touch Panel Interface	I2C
Display Mode	IPS / Transmissive / Normally Black
Viewing Direction	80/80/80/80
Luminance	280 Cd/m2

Applications:

	<p>CH240QV52A-CTD Household Appliances LCD Touch Screen Display Module</p> <p>The CH240QV52A-CTD is a multifunctional LCD touch screen display module designed primarily for household appliances. The module is manufactured by Chenghao Optoelectronics and can be modified and customized to suit various industries. It can be used for applications including but not limited to industrial equipment, instrumentation, medical equipment, artificial intelligence, the Internet of Things, automotive equipment, etc.</p>
--	--

FAQ:

- Q1: What is the brand name of this product?**
A1: The brand name of this product is Chenghao Optoelectronic.
- Q2: What is the model number of this product?**
A2: The model number of this product is CH240QV52A-CTD.

Q3: Where is this product manufactured?

A3: This product is manufactured in China Shenzhen.

Q4: What certifications does this product have?

A4: This product has RoHS, CE, and FCC certifications.

Q5: What is the minimum order quantity for this product?

A5: The minimum order quantity for this product is 100 pcs.

Q6: What are the packaging details for this product?

A6: All the products are packed in right way to keep it safe. For small sizes of products we use tray + carton, For bigger sizes we use foam slot + carton. We also design packages according to customers' requirements.

Q7: What is the delivery time for this product?

A7: The delivery time for this product is 3~7 days.

Q8: What are the payment terms for this product?

A8: The payment terms for this product are TT.

Q9: What is the supply ability for this product?

A9: The supply ability for this product is 300K pcs/month.



Shenzhen ChengHao Optoelectronic Co., Ltd.



+86 755-27806536



add@chenghaolcm.com



chenghaolcd.com

7th floor, building C5, Hengfeng Industrial City, Hangcheng street, Bao'an District, Shenzhen