



## 240\*320 Small Custom LCD Display Module 2.4 Inch Color TFT Lcd Screen For 86 Boxes

### Our Product Introduction

for more products please visit us on [chenghaolcd.com](http://chenghaolcd.com)

#### Basic Information

- Place of Origin: China Shenzhen
- Brand Name: Chenghao Optoelectronic
- Certification: RoHS CE FCC
- Model Number: CH240QV52A-CTD
- Minimum Order Quantity: 100 pcs
- Packaging Details: All the products are packed in right way to keep it safe. For small sizes of products we use tray + carton, For bigger sizes we use foam slot + carton. we also design packages according to customers' requirements
- Delivery Time: 3~7 Days
- Payment Terms: TT
- Supply Ability: 300K pcs/month



#### Product Specification

- Product Name: Small Custom Lcd Display Module
- Display Mode: IPS / Transmissive / Normally Black
- Operating Temperature: -20 ~ +70°C
- Touch Panel Interface: I2C
- Storage Temperature: -30 ~ +80°C
- Resolution: 240\*320 Dots
- Lcd Interface: SPI + RGB + MCU
- Luminance: 280 Cd/m2
- Viewing Direction: 80/80/80/80
- Highlight: 2.4 Inch Color TFT Lcd Screen , Small Custom Lcd Display Module, 240\*320 LCD Display Module



#### More Images



#### Product Description

Product Description:

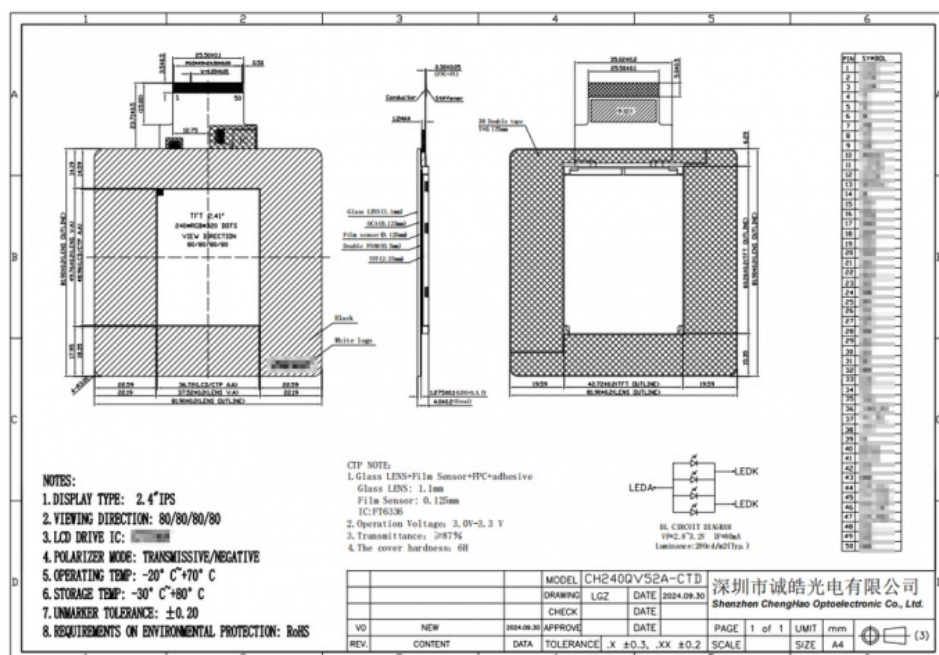
### Our Product

This LCD touch screen is equipped with a 1.1mm thick capacitive touch glass cover, which can perfectly fit the customer's 86-box device. The screen has a service life of up to 30,000 hours, ensuring durability and can operate smoothly in a wide temperature environment of -20~+70°C. In addition, the CH240QV52A-CTD is RoHS compliant and halogen-free, making it an environmentally friendly choice for any user.

The CH240QV52A-CTD is a small-sized LCD touch screen module that has been designed specifically for home appliances. This advanced module comes with a range of features that make it stand out from other touch screen modules available on the market.

Finally, the CH240QV52A-CTD offers advanced touch screen functionality. The module is equipped with a capacitive touch sensing panel that enables users to interact with the device in a more intuitive and user-friendly way. With the I2C interface, the touch panel can easily communicate and interconnect with the customer's 86-box device, providing seamless touch screen functionality.

Viewing Direction	80/80/80/80
Touch Panel Interface	I2C
Luminance	280 Cd/m2
Operating Temperature	-20 ~ +70°C
Resolution	240*320 Dots
Storage Temperature	-30 ~ +80°C
Display Mode	IPS / Transmissive / Normally Black
Touch Type	Capacitive
Lcd Interface	SPI + RGB + MCU



## Applications:

The CH240QV52A-CTD is a highly versatile LCD touch screen display module designed for use mainly in home appliances. However, the module's performance parameters and touch glass cover can be modified and customized by Chenghao Optoelectronic manufacturers for use in a wide range of industries. These industries include but are not limited to industrial equipment, instrumentation, medical equipment, artificial intelligence, Internet of Things equipment, and automotive equipment.

With its customizable nature, manufacturers can configure the module according to their specific requirements and integrate it into various home appliances, making it ideal for use in the modern-day home.

When used in industrial equipment and instrumentation, the CH240QV52A-CTD delivers accurate and reliable results, making it ideal for process control, automation, and quality assurance applications. Similarly, its performance parameters make it well-suited for use in medical and AI equipment, where reliability, precision, and accuracy are critical for enhancing the overall performance.

Overall, the CH240QV52A-CTD is a highly versatile module that can be customized to meet the unique requirements of various industries, making it an excellent choice for manufacturers looking to add value to their products.

## FAQ:

**Q:** What is the brand name of this product?

**A:** The brand name of this product is Chenghao Optoelectronic.

**Q:** What is the model number of this product?

**A:** The model number of this product is CH240QV52A-CTD.

**Q:** Where is this product made?

**A:** This product is made in China Shenzhen.

**Q:** What certifications does this product have?

**A:** This product has RoHS, CE, and FCC certifications.

**Q:** What is the delivery time for this product?

**A:** The delivery time for this product is 3~7 days.



**Shenzhen ChengHao Optoelectronic Co., Ltd.**



+86 755-27806536



add@chenghaolcm.com



chenghaolcd.com

7th floor, building C5, Hengfeng Industrial City, Hangcheng street, Bao'an District, Shenzhen