



## 50 Pins Full Color TFT LCD Module 3.5" 320x480 Touchscreen With All Black Effect

### Our Product Introduction

for more products please visit us on [chenghaolcd.com](http://chenghaolcd.com)

#### Basic Information

- Place of Origin: China Shenzhen
- Brand Name: Chenghao Optoelectronic
- Certification: CE RoHS FCC
- Model Number: CH350HV49B-CTB
- Minimum Order Quantity: No Moq
- Packaging Details: All the products are packed in right way to keep it safe. For small sizes of products we use tray + carton, For bigger sizes we use foam slot + carton. we also design packages according to customers' requirements
- Delivery Time: 3~7 Days
- Payment Terms: TT or Others
- Supply Ability: 20000000 pcs/month



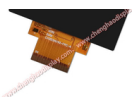
#### Product Specification

- Product Name: 3.5 Tft 320x480 Touchscreen
- Lcd Interface: SPI + MCU + RGB
- Operating Temperature: -20 ~ +70 °C
- Display Mode: IPS / Transmissive / Normally Black
- Life-time: 30000 H
- Resolution: 480\*320 Dots
- Touch Panel Type: Capacitive
- Touch Panel Interface: IIC
- Storage Temperature: -30 ~ +80 °C
- Highlight: Full Color TFT LCD Module ,  
3.5" TFT LCD Module ,  
Touchscreen TFT LCD Module



#### More Images





## Product Description

### Product Description:

Chenghao Optoelectronic has designed a 3.5 inch small touch LCD module, the CH350HV49B-CTB, particularly for smart door lock products. This display module can display videos or images in 262K color and has a resolution of 320\*480 pixels. With a brightness of 300 cd/m2 Luminance, the module can showcase clear images in most indoor environments. This display module features an IPS/Transmissive/Normally Black display mode, which supports 85/85/85/85 viewing angles. Additionally, it is also capable of running efficiently in -20 ~ +70°C environment for more than 30000 hours. The module supports several interfaces like SPI, RGB, MCU, and much more to cater to the needs of different users. Apart from its technical features, the CH350HV49B-CTB display module is RoHS-compliant and halogen-free. In short, this means that it meets the standard of restricting the usage of specific hazardous substances in the making of electrical and electronic equipment. Therefore, it is environmentally friendly and safe to use.

### Features:

Introducing the CH350HV49B-CTB LCD Module

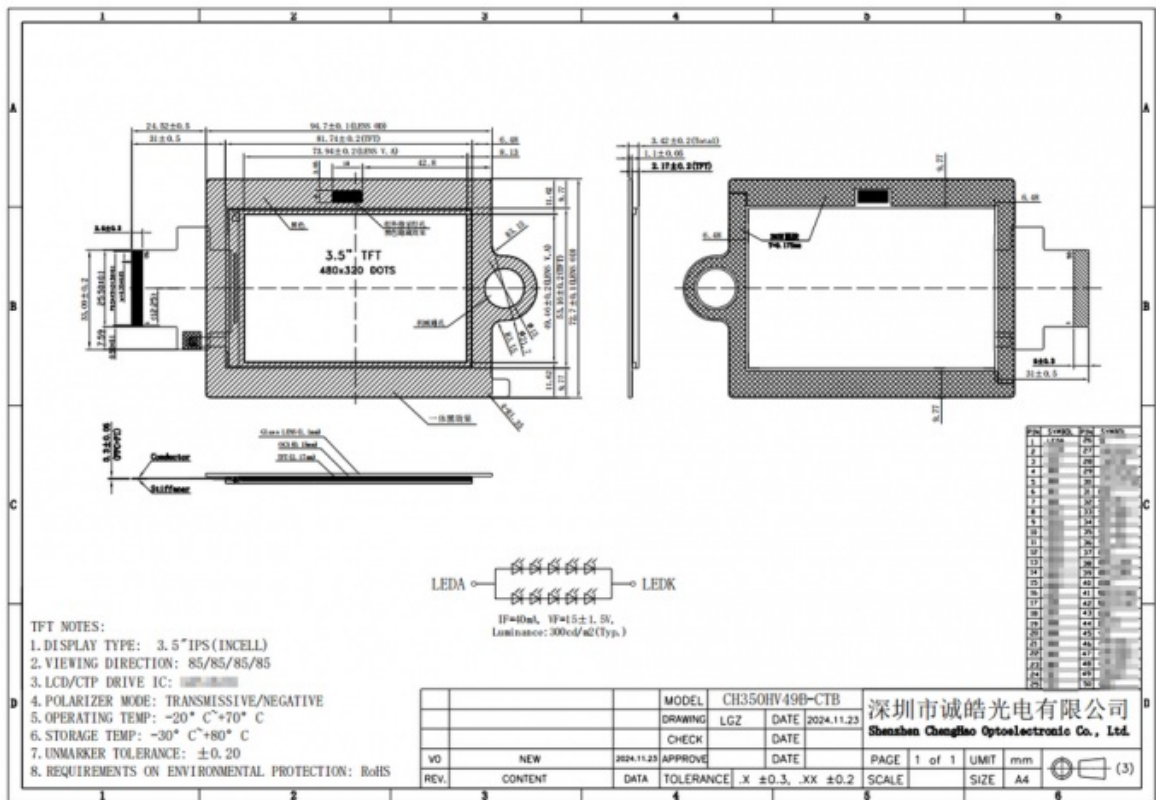
The CH350HV49B-CTB is a highly customized LCD screen module, mainly used to be installed on smart door locks. The module is equipped with a full black touch glass cover, which supports screen touch sensing and looks more high-end, making it very suitable for installation in high-end products that require perfect performance.

Furthermore, the LCD screen module uses IPS display technology, which significantly expands its viewing angle to 85/85/85/85. Therefore, users can view the screen from all angles without experiencing any blurry screen images. This feature is critical to providing the ultimate user experience and satisfaction.

In addition, the CH350HV49B-CTB LCD module adopts a wide temperature and durable design. It can operate smoothly in the temperature range of -20 ~ +70°C. The advantage of this feature is that it enhances the display module's resistance to the usage environment, making it suitable for a variety of applications.

### Technical Parameters:

| Product Attribute     | Specification                       |
|-----------------------|-------------------------------------|
| Touch TFT LCD Module  | TFT LCD Capacitive Touchscreen      |
| Resolution            | 480*320 Dots                        |
| Touch Panel Type      | Capacitive                          |
| Touch Panel Interface | IIC                                 |
| Viewing Direction     | 85/85/85/85                         |
| Luminance             | 300 Cd/m2                           |
| Operating Temperature | -20 ~ +70 °C                        |
| Storage Temperature   | -30 ~ +80 °C                        |
| Display Mode          | IPS / Transmissive / Normally Black |
| Life-time             | 30000 H                             |
| Lcd Interface         | SPI + MCU + RGB                     |
| Touch TFT Displays    | TFT LCD Capacitive Touchscreen      |



## Applications:

The CH350HV49B-CTB is a custom-designed LCD display module that is specifically targeted at smart home devices. This versatile display module has the ability to be re-modified to meet the exact requirements of the customer, making it a valuable component that can be utilized across a wide range of industries such as medical equipment, artificial intelligence, home appliances, commercial equipment, automotive equipment and other fields.

The display module's ability to be custom modified in accordance with specific requirements ensures that it is capable of successfully handling each industry's unique needs. It's the perfect solution for those looking for a versatile and reliable display module that can be used for various applications without the need for further customization. It's a cost-effective solution that provides good value for money.

## FAQ:

**Q: What is the brand name of the product?**

A: The brand name of the product is Chenghao Optoelectronic.

**Q: What is the model number of the product?**

A: The model number of the product is CH350HV49B-CTB.

**Q: Where is the product manufactured?**

A: The product is manufactured in China, specifically in Shenzhen.

**Q: What certifications does this product have?**

A: This product has CE, RoHS, and FCC certifications.

**Q: What is the minimum order quantity for this product?**

A: There is no minimum order quantity for this product.

**Q: How is the product packaged and what are the delivery times?**

A: All the products are packed in the right way to keep them safe. For small sizes of products, we use tray + carton. For bigger sizes, we use foam slot + carton. We also design packages according to customers' requirements. The delivery time is 3-7 days.

**Q: What payment terms are accepted for this product?**

A: TT or other payment terms are accepted for this product.

**Q: What is the supply ability of this product?**

A: The supply ability of this product is 20,000,000 pcs/month.



Shenzhen Chenghao Optoelectronic Co., Ltd.



+86 755-27806536



add@chenghaolcm.com



chenghaolcd.com

7th floor, building C5, Hengfeng Industrial City, Hangcheng street, Bao'an District, Shenzhen